



CABLEWAY™
Cable Runway
Support System

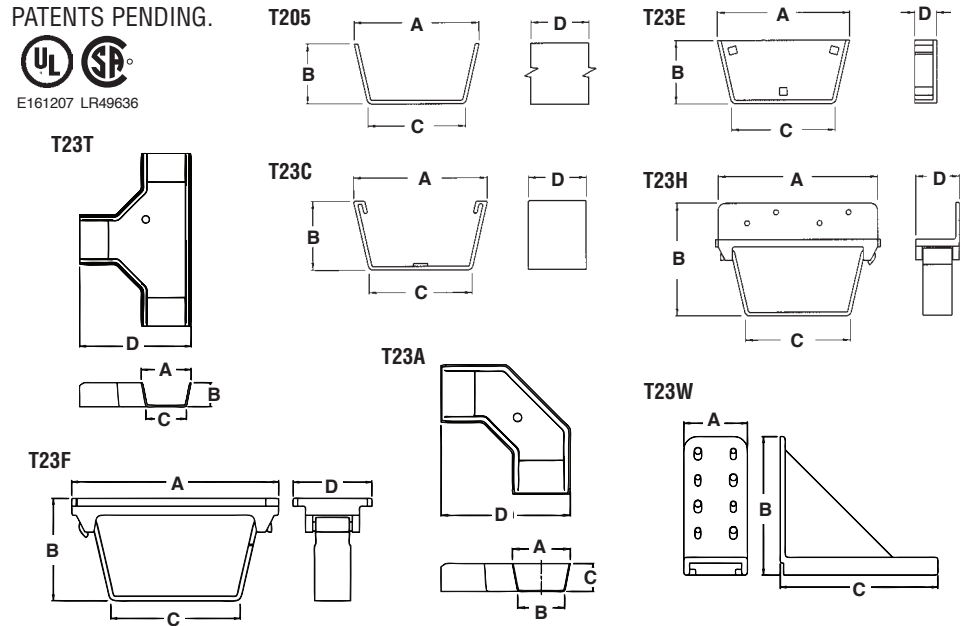
New!

Cable support system for either power or low voltage cable.
For new construction or retrofit.
Non-metallic.



CATALOG NUMBER	UPC/DCI/NAED MFG #01 8997	DESCRIPTION	STD PKG	DIM A	DIM B	DIM C	DIM D
T205	38060	Wire Tray - 5 ft. Lengths	10	4.150	2.000	3.380	60.000
T23A	38065	Angle	10	4.160	2.000	3.380	9.280
T23C	38061	Coupling	10	4.630	2.380	3.570	2.000
T23E	38062	End Cap	10	4.570	2.190	3.570	.760
T23F	38066	Flat Surface Bracket	25	5.750	2.850	3.600	2.190
T23H	38063	Support Bracket	25	5.500	3.880	3.620	1.500
T23T	38067	Tee	10	4.160	2.000	3.380	9.280
T23W	38068	Wall Mount Bracket	10	2.410	5.240	5.970	-

PATENTS PENDING.



Rated for a maximum load of 6 lbs/linear foot of runway.

Features and Benefits

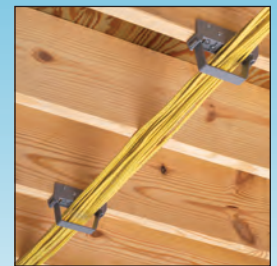
- Secure, UL Listed as a cable support system
- For power or low voltage cable
- Support brackets attach directly to framing members, without structural damage
- Time saving system – no holes to drill through joists
- Brackets hold cables in place – open the bracket for easier cable insertion
- Slide-on trough protects and covers cable
- Install additional trough sections as needed and join them together with couplings
- Push-on end caps complete the job

Wire Fill Chart



For a video demonstration go to...
aifittings.com/cableway_video/Cableway.html

NM Cable w/ Copper Conductors	Fill Units Per Cable	(or) Total Cables of One Size
14/2	1 ea.	40
14/3	1.25 ea.	32
14/4	1.5 ea.	26
12/2	1.5 ea.	26
12/3	1.75 ea.	22
12/4	2 ea.	20
10/2	2 ea.	20
10/3	2.25 ea.	17
8/2	2.25 ea.	17
8/3	2.50 ea.	16
6/2	2.75 ea.	14
6/3	3 ea.	13





**SNAP-TITE®
Connectors**

With spring steel clip. For NM
• SE • MC • Flex • AC cable.
For steel and aluminum
jacketed cables. Zinc die-cast.

CATALOG NUMBER	UPC/DCI/NAED MFG #01 8997	TRADE SIZE	KO SIZE	UNIT PKG	STD PKG	DIM A	DIM B	DIM C	CABLE RANGE
840ST	80070	3/8	1/2	100	1000	.485	.879	.858	.225-.612
8400ST	80074	3/8	1/2	100	1000	.485	.879	.858	.225-.612

Refer to pages C-12 and C-13 for complete cable ranges.
SNAP-TITE® products have been tested and listed by UL in accordance with UL's ground fault requirements. For additional information see page 6.

For connectors that cost less and install faster see page C-8.
PATENTED.



840ST



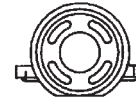
8400ST



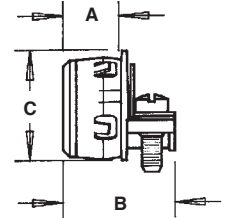
E28474 LR49636



840ST



8400ST



**NM Cable
Connector**

For NM cable. Zinc die-cast.

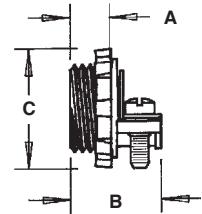
CATALOG NUMBER	UPC/DCI/NAED MFG #01 8997	TRADE SIZE	KO SIZE	UNIT PKG	STD PKG	DIM A	DIM B	DIM C	CABLE RANGE
841	00841	3/8	1/2	100	1000	.422	.825	1.105	.225-.612

Refer to pages C-12 and C-13 for complete cable ranges.

For connectors that cost less and install faster see page C-8.



E28474 LR49636



**SNAP-TITE®
Connector**

With spring steel clip. For NM
cable. Zinc die-cast.

CATALOG NUMBER	UPC/DCI/NAED MFG #01 8997	TRADE SIZE	KO SIZE	UNIT PKG	STD PKG	DIM A	DIM B	DIM C	CABLE RANGE
841ST	80068	3/8	1/2	100	1000	.510	.912	.920	.225-.612

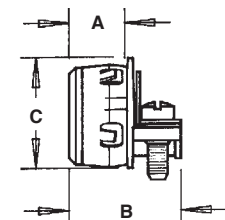
Refer to pages C-12 and C-13 for complete cable ranges.

SNAP-TITE® products have been tested and listed by UL in accordance with UL's ground fault requirements. For additional information see page 6.

PATENTED.



E28474 LR49636





**SNAP-TITE®
Connector**

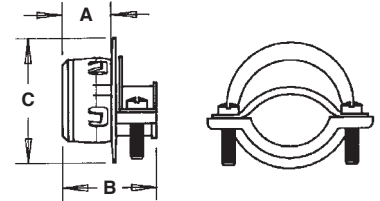
With spring steel clip.
For NM • SE cable.
Zinc die-cast.



CATALOG NUMBER	UPC/DCI/NAED MFG #01 8997	TRADE SIZE	KO SIZE	UNIT PKG	STD PKG	DIM A	DIM B	DIM C	CABLE RANGE
842ST	80084	3/4	3/4	50	500	.510	1.070	1.200	.300-.780

SNAP-TITE® products have been tested and listed by UL in accordance with UL's ground fault requirements. For additional information see page 6.

PATENTED.



Cable Connectors

For NM • SE • MC • AC cable.
For steel and aluminum jacketed cables. Zinc die-cast.

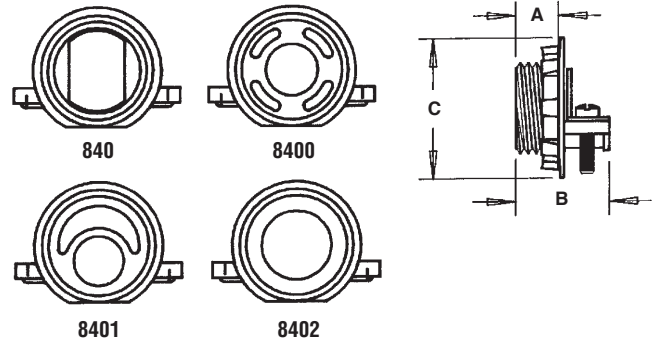


CATALOG NUMBER	UPC/DCI/NAED MFG #01 8997	TRADE SIZE	KO SIZE	UNIT PKG	STD PKG	DIM A	DIM B	DIM C	CABLE RANGE
840†	00840	3/8	1/2	100	1000	.422	.825	1.105	.225-.612
8400†	08400	3/8	1/2	100	1000	.422	.825	1.105	.225-.612
8401†	08401	3/8	1/2	100	1000	.422	.825	1.105	.225-.612
8402	08402	3/4	3/4	50	500	.533	1.093	1.395	.375-.780

Refer to pages C-12 and C-13 for complete cable ranges.

*Listed for MC only. UL# E123751.

†For connectors that cost less and install faster see page C-8.

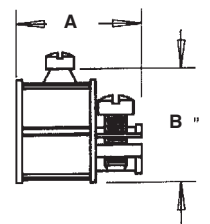


**Combination
Coupling**

EMT to NM. Zinc die-cast.



CATALOG NUMBER	UPC/DCI/NAED MFG #01 8997	EMT SIZE	UNIT PKG	STD PKG	DIM A	DIM B	CABLE RANGE
8600	08600	1/2	50	500	1.162	1.090	.250-.612





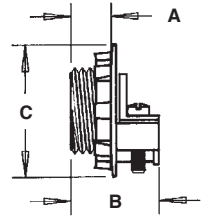
Cable Connectors

For NM • SEU cable. Zinc die-cast.



CATALOG NUMBER	UPC/DCI/NAED MFG #01 8997	TRADE SIZE	KO SIZE	UNIT PKG	STD PKG	DIM A	DIM B	DIM C	MAX OPENING
842	00842	3/4	3/4	50	500	.481	1.000	1.375	.730
843	00843	1	1	25	250	.780	1.284	1.670	.850
844	00844	1-1/4	1-1/4	10	100	.710	1.312	2.030	.900
848*	00848	1-1/2	1-1/2	10	50	.817	1.453	2.300	.960
849*	00849	2	2	10	50	.823	1.590	2.900	.960

*UL# E66990 - Service entrance ONLY.

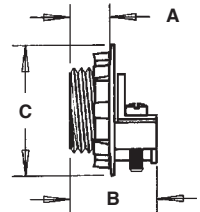


Cable Connectors

For NM • SE cable. Zinc die-cast.



CATALOG NUMBER	UPC/DCI/NAED MFG #01 8997	TRADE SIZE	KO SIZE	UNIT PKG	STD PKG	DIM A	DIM B	DIM C	MAX OPENING
842	00842	3/4	3/4	50	500	.481	1.000	1.375	.730
843S	84310	1	1	25	250	.780	1.284	1.670	.970
844S	84410	1-1/4	1-1/4	10	100	.710	1.312	2.030	1.160
848S	84810	1-1/2	1-1/2	10	50	.817	1.453	2.300	1.420
849S	84910	2	2	10	50	.823	1.590	2.900	1.750

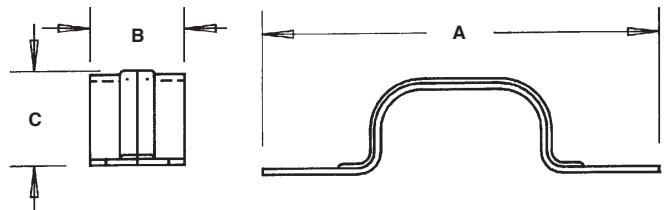


2-Hole Cable Straps

For SEU cable. Plated steel.



CATALOG NUMBER	UPC/DCI/NAED MFG #01 8997	WIRE SIZE	UNIT PKG	STD PKG	DIM A	DIM B	DIM C
C STRAP	37500	8/3-3/3	50	200	2.410	.750	.470
E STRAP	43625	2/3	50	200	1.080	.750	.575
H STRAP	82990	1/0-2/0	50	200	3.183	.755	.750
K STRAP	83770	3/0, 4/0	50	200	3.500	.755	.890



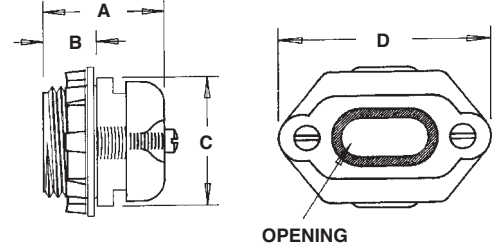


Gland-Type Service Entrance Cable Connectors

Twin screw type. Zinc die-cast.



CATALOG NUMBER	UPC/DCI/NAED MFG #01 8997	TRADE SIZE	KO SIZE	UNIT PKG	STD PKG	DIM A	DIM B	DIM C	DIM D	CABLE RANGE
WC1001	53101	1	1	1	50	1.400	.615	1.500	2.230	.630 x 1.000



UF Connectors

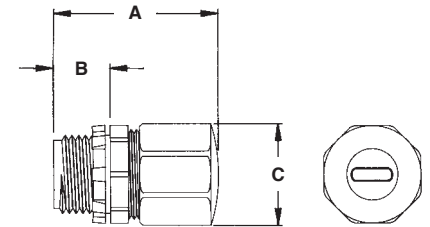
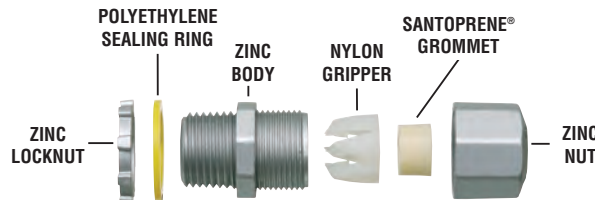
Compression type for underground feeder cable. Zinc die-cast.



CATALOG NUMBER	UPC/DCI/NAED MFG #01 8997	TRADE SIZE	KO SIZE	UNIT PKG	STD PKG	DIM A	DIM B	DIM C	CABLE RANGE
UF50	36500	1/2	1/2	25	100	1.792	.630	1.042	14/2-12/2
UF75	51302	3/4	3/4	10	50	1.792	.630	1.042	14/3-10/2

Low profile design to fit the new smaller UF cables as well as standard sizes.

PATENTED.



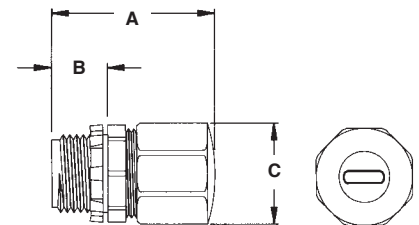
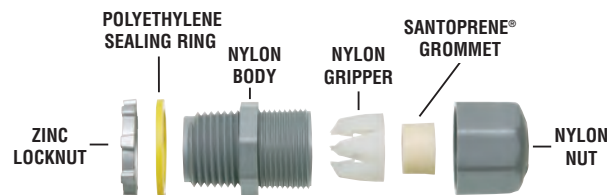
Non-Metallic UF Connectors

Compression type for underground feeder cable.



CATALOG NUMBER	UPC/DCI/NAED MFG #01 8997	TRADE SIZE	KO SIZE	UNIT PKG	STD PKG	DIM A	DIM B	DIM C	CABLE RANGE
NMUF50	55040	1/2	1/2	25	100	1.792	.630	1.042	14/2-12/2
NMUF75	54367	3/4	3/4	10	50	1.792	.630	1.042	14/3-10/2

Low profile design to fit the new smaller UF cables as well as standard sizes.



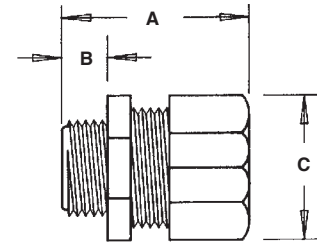


Gland-Type Service Entrance Cable Connectors

Zinc die-cast.



CATALOG NUMBER	UPC/DCI/NAED MFG #01 8997	TRADE SIZE	DIM A	DIM B	DIM C	GROMMET OPENING MAX ID	GROMMET OPENING MIN ID	INSULATED CONDUCTOR SIZE AWG	UNINSULATED CONDUCTOR SIZE AWG	STD PKG
WC1004	53104	1	1.970	.750	1.775	.56 x .82	.44 x .81	4-7	4	50
WC1006	53106	1	1.970	.750	1.775	.50 x .77	.40 x .71	6-7	6	50
WC1008	53108	1	1.970	.750	1.775	.40 x .67	.32 x .50	8-1	8	50
WC1252	53125	1-1/4	1.943	.750	1.916	.59 x .98	.51 x .93	2-7	2	50
WC1252N	53122	1-1/4	1.943	.750	1.916	.66 x 1.10	.57 x 1.05	1-19	2	50
WC1501	53151	1-1/2	2.390	.750	2.500	.70 x 1.18	.65 x 1.10	1/0-19	1/0	10
WC1502	53152	1-1/2	2.390	.750	2.500	.86 x 1.36	.70 x 1.20	2/0-19	2/0	10
WC2001	53201	2	2.420	.750	2.500	.70 x 1.18	.65 x 1.10	1/0-19	1/0	10
WC2002	53202	2	2.420	.750	2.500	.85 x 1.35	.70 x 1.20	2/0-19	2/0	10
WC2003	53203	2	2.420	.750	2.500	.86 x 1.38	.75 x 1.30	3/0-19	3/0	10
WC2004	53204	2	2.420	.750	2.850	1.03 x 1.59	.88 x 1.42	4/0-19	4/0	10
WC2004N	53205	2	2.420	.750	2.500	1.11 x 1.75	.94 x 1.58	4/0-19	4/0	10



NM Cable Connectors

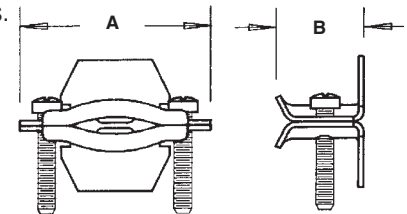
Plated steel.



CATALOG NUMBER	UPC/DCI/NAED MFG #01 8997	WIRE SIZE	UNIT PKG	STD PKG	DIM A	DIM B	MIN/MAX OPENING
BT50*	24050	14/2-8-3	100	1000	1.500	.720	.250-.600
BT75*	24075	8/2-6/2	50	500	1.764	.811	.124-.934
BT125	24125	2/0-3/0	25	250	2.245	.842	.275-.900
BT150	24150	4/0	20	200	2.705	.835	.275-.900

*UL only.

Refer to pages C-12 and C-13 for complete cable ranges.





Non-Metallic Push-In Connectors

For NM and flexible cord.



NM840



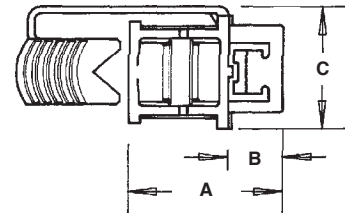
NM841

CATALOG NUMBER	UPC/DCI/NAED MFG #01 8997	TRADE SIZE	KO SIZE	UNIT PKG	STD PKG	DIM A	DIM B	DIM C
NM840	54840	3/8	1/2	100	1000	1.031	.375	.965
NM841	54841	1/2	1/2	50	500	1.340	.475	1.125
NM842	54842	3/4	3/4	25	250	1.510	.475	1.200
NM843	54843	1	1	25	250	1.637	.475	1.500
NM844	50175	1-1/4	1-1/4	10	100	2.085	.475	2.012

Refer to pages C-12 and C-13 for complete cable ranges.



E28474 LR49636



Installation Instructions

1. Disconnect electrical power.
Push the connector into knockout.
2. Install required cables or cords.
3. Place wedge in connector slot and lock tight with a pair of pliers. Tightened wedge provides strong, positive grip.



Non-Metallic Cable Connectors

For non-metallic sheathed cable. One piece construction. Listed for 1 or 2 cables. Holds cables securely and handles a wide range of cable sizes.



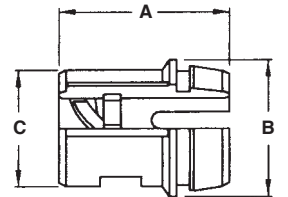
CATALOG NUMBER	UPC/DCI/NAED MFG #01 8997	TRADE SIZE	KO SIZE	UNIT PKG	STD PKG	DIM A	DIM B	DIM C
NM74	54510	3/8	1/2	100	1000	1.289	1.029	.875
NM75	54513	3/4	3/4	25	250	1.289	1.271	1.117

Refer to pages C-12 and C-13 for complete cable ranges.

PATENTED.



E28474 LR49636





Black Button™ Non-Metallic Push-In Connectors

For NM cable.



NM94



NM95



NM96

The *Black Button* is not only the lowest cost NM connector on the market, but offers the fastest method of installing single or multiple cables.

For multiple cable installations:

- Two cables may be inserted together or individually.
- A second cable may be added without removing the first.

Plus, the NM94 meets UL and CSA requirements for single or multiple cables.

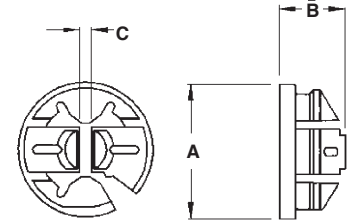
CATALOG NUMBER	UPC/DCI/NAED MFG #01 8997	TRADE SIZE	KO SIZE	UNIT PKG	STD PKG	DIM A	DIM B	DIM C
NM94	05488	3/8	1/2	250	1000	1.010	.450	.096
NM940	72156	3/8	1/2	100	1000	1.010	.450	.096
NM95	10956	3/4	3/4	50	500	1.293	.597	.096
NM96	72158	1	1	25	250	1.648	.683	.156

Refer to pages C-12 and C-13 for complete cable ranges.

PATENTED.



E28474 LR49636



Installation Instructions

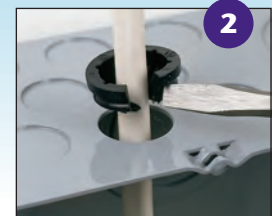
1. Disconnect electrical power. Insert connector into knockout.
2. Push non-metallic sheathed cable into the connector to desired length.



Removal

If necessary, the NM94 series may be removed with a screwdriver.

1. Slip screwdriver under NM connector and twist.
2. NM94 pops out of the knockout.



Reduce your Labor Costs!

Arlington's NM94 costs just 6¢ to install.
Compare this to 16¢ for NM841 and 40¢ for 841*.

- Listed for both 1 or 2 cables.
- Installs easily... snaps into KO using light finger pressure.
- Cables insert without a struggle for a smooth installation.
- Holds wires securely - meets and exceeds UL pullout tests.
- Simple to remove with a twist of a screwdriver.
- Arlington's Black Button™ is the lowest cost NM cable connector available today.

* Labor costs are based on a rate of \$30.00 per hour.



Non-Metallic Bushings for Metal Studs



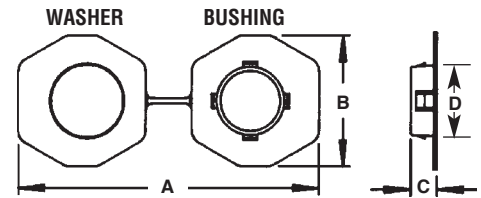
FITS A STANDARD 1" KNOCKOUT

CATALOG NUMBER	UPC/DCI/NAED MFG #01 8997	STUD SIZE	STD PKG	DIM A	DIM B	DIM C	DIM D
SB13	40115	2 x 4	500	5.670	2.500	.505	1.300
SB130	40130	2 x 4	100	5.670	2.500	.505	1.300

These bushings fit existing irregular shaped holes in metal studs, alleviating the need to punch holes in metal studs, weakening the structural member. Use these bushings to comply with paragraph 300-4(b)(1) of the 2005 NEC code which states that: "In both exposed and concealed locations where nonmetallic-sheathed cables pass through either factory or field punched, cut, or drilled slots or holes in metal members, the cable shall be protected by bushings or grommets covering all metal edges and securely fastened in the opening prior to installation of the cable."

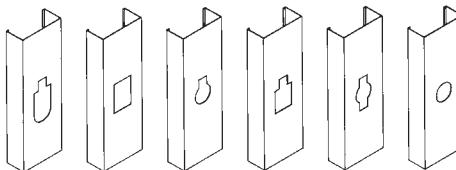
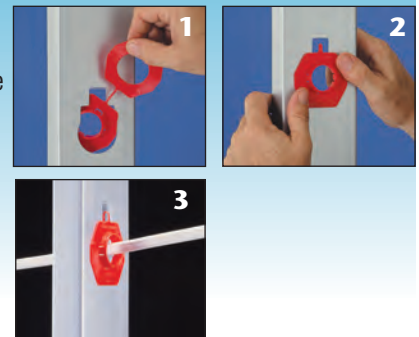


E161207 LR49636

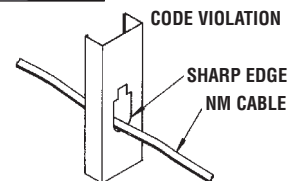


Installation Instructions

To install these bushings in an irregular shaped hole, pass one end of the joined connector through the hole in the stud. Snap the bushing and the washer ends together. There's no need to separate the two halves. If a punched hole is required, the SB13 can be installed in a standard 1" trade size, round punched hole (1-3/8" diameter). Snap the bushing end into the hole.



Common hole configurations in metal studs.



Non-Metallic Bushings for Metal Studs

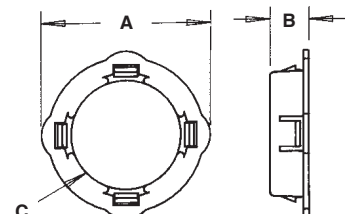


CATALOG NUMBER	UPC/DCI/NAED MFG #01 8997	TRADE SIZE	STD PKG	DIM A	DIM B	DIM C
SB1	18001	1/2	1000	.940	.470	.700
SB10	18010	1/2	100	.940	.470	.700
SB3	18050	1	1000	1.750	.400	1.150
SB30	18053	1	100	1.750	.400	1.150

Note: See page M-9 for larger sizes.



E161207 LR49636





CS6 Cable Support



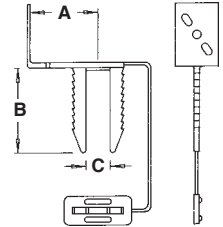
CATALOG NUMBER	UPC/DCI/NAED MFG #01 8997	STD PKG	DIM A	DIM B	DIM C
CS6	71006	500	1.750	2.000	.563
CS60	71060	100	1.750	2.000	.563

Note: For position only. For *support clips* for AC/MC cable see NM310 on page E-22.

PATENTED.



E161207 LR49636



Holds...

- Six 14/2 NM cables *or*
- Five 12/2 NM cables *or*
- Four 10/2 NM cables *or*
- One 14/2 to 10/2 MC/AC cable

Installation Instructions

Simply position the CS6 in the desired location and insert a sheet metal screw into a steel or wood stud or use a nail in a wood stud. Cable or cables can then be placed between serrated forks. Install mating washer over serrated forks to secure cable/cables.

Metal Stud

Wood Stud



Alternate fastening option: Use staple

Cable Standoffs

Positions non-metallic sheathed cable, phone/data cable, and coaxial cable. Installs with a screw or nail. Nail included with CS4.



CS4



CS7

CATALOG NUMBER	UPC/DCI/NAED MFG #01 8997	STD PKG	DIM A	DIM B	DIM C
CS4	50174	100	4.100	.750	1.200
CS7*	71007	100	3.490	.880	.740

*UL and CSA only

Note: For position only.



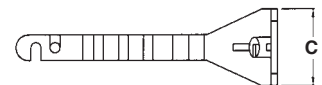
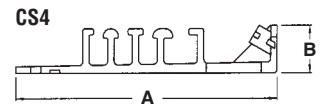
E161207 LR49636

Features and Benefits

- Positions cables at a safe distance from nailing surface
- CS4 provides a neat, organized cable installation and prevents tangles
- CS7 positions cable 2" from a furring strip or 2x4 stud
- CS7 features positive lock to keep cables in place
- Positions both flat and round NM cables
- Complies with 2005 NEC Article 300-4d

CS7 Holds...

- Up to five runs of 12/2 non-metallic sheathed cable.
- Up to eight runs of Cat 5 cable.
- Up to four runs of Cat 6 cable.
- Up to five runs of coaxial cable.



CS4 Holds...

- One 14/3 to one 10/3
- Three 14/2 W/G to three 10/3



CS2 & CS20SC Cable Supports

Supports up to four 14/2 - 10/2 flat (any combination) and two 14/3 - 10/3 (any combination) NM cables.



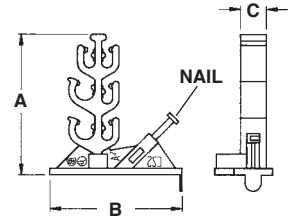
CS2, CS20



#8 self-tapping sheet metal screw
CS20SC

CATALOG NUMBER	UPC/DCI/NAED MFG #01 8997	UNIT PKG	STD PKG	DIM A	DIM B	DIM C
CS2	71002	500	500	2.650	2.530	.500
CS20	71020	100	100	2.650	2.530	.500
CS20SC	71025	100	100	2.704	2.563	.500
CS20BAG	71022	25	100	2.650	2.530	.500

PATENTED. ADDITIONAL PATENTS PENDING.



Installation Instructions

To install the CS2:

Position the CS2 in the desired location on a wood stud and drive in nail. Insert cable or cables.

To install the CS20SC:

Position the CS20SC in the desired location on a wood or metal stud and tighten self-tapping screw. Insert cable or cables.

CS2 on Wood Stud



CS20SC on Metal Stud

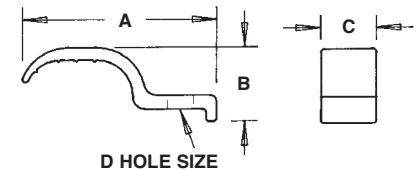


1-Hole Aluminum Straps

For service entrance cable. Aluminum.



CATALOG NUMBER	UPC/DCI/NAED MFG #01 8997	WIRE SIZE	UNIT PKG	STD PKG	DIM A	DIM B	DIM C	DIM D
3232	32320	3 #8 to 3 #4	100	1000	2.078	.775	.600	.265
3282	03282	3 #1/0 to 3 #2/0	100	1000	2.488	.940	.720	.265
3284	32840	3 #3/0 to 3 #4/0	100	1000	2.710	1.218	1.000	.325

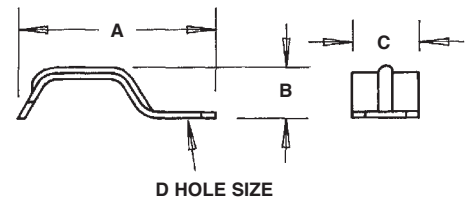


1-Hole Steel Straps

For service entrance cable. Plated steel.



CATALOG NUMBER	UPC/DCI/NAED MFG #01 8997	WIRE SIZE	UNIT PKG	STD PKG	DIM A	DIM B	DIM C	DIM D
301	00301	8/3-3/3	100	1000	1.687	.442	.565	.265
303	00303	2/3	100	1000	1.830	.530	.575	.265
313S	00133	1, 1/0 or 2/0	100	1000	2.472	.770	1.000	.325
314S	00014	3/0, 4/0	100	1000	2.790	.920	1.000	.330





FITTINGS	CABLE RANGE		TYPE	
1/2" KO				
BT50		1-14/2 to 1-8/3 2-12/3 4-14/2	NM NM NM	
841, 841ST	1-14/2 & 1-14/3 1-14/2 & 1-12/3 1-12/2 & 1-14/3 1-12/2 & 1-12/3 2-14/2 & 1-14/3 2-14/2 & 1-12/3	1-14/2 to 10/2 1-14/3 to 10/3 2-14/2 to 10/2 1-14/2 & 1-12/2 1-14/2 & 1-10/2 1-12/2 & 1-10/2 3-14/2	NM NM NM NM NM NM NM	
NM74	1-14/2 to 1-10/2 1-14/3 to 1-10/3	2-14/2 to 2-10/2 2-14/3	NM NM	
NM94	1-14/2 to 1-10/2 1-14/3 to 1-10/3	2-14/2 to 2-10/2 2-14/3 to 2-12/3	1-14/2 and 1-12/2 1-14/2 and 1-10/2 1-12/2 and 1-10/2 1-14/3 and 1-12/3	NM NM NM NM
NM840		1-14/2 to 1-10/2	NM	
NM841	1-14/2 to 6/2 1-14/3 to 10/3 1-14/2 & 1-12/2 1-14/2 & 1-10/2 1-12/2 & 1-10/2 1-14/2 & 1-14/3 1-14/2 & 1-12/3 1-12/2 & 1-14/3 1-12/2 & 1-12/3 1-8/2 & 1-14/2 1-8/2 & 1-12/2	2-14/2 to 10/2 2-14/2 & 1-14/3 2-14/2 & 1-12/3 2-14/2 & 1-12/2 2-14/2 & 1-10/2 2-14/3 3-14/2 1-14/2 & 2-12/2 1-14/2 & 2-10/2 1-6/2	NM NM NM NM NM NM NM NM NM NM NM	
840, 840ST 8400, 8400ST 8401		1-14/2 to 10/2 1-14/3 to 10/3 2-14/2 to 10/2 1-14/2 & 1-12/2 1-14/2 & 1-10/2 1-12/2 & 1-10/2	NM NM NM NM NM NM	
3/4" KO				
BT75 842, 842ST NM842*		1-8/2 to 1-6/2 2-14/3 to 2-10/3 1-8/3 to 1-6/3 1-14/3 & 1-12/3 1-14/3 & 1-10/3 1-12/3 & 1-10/3 1-8/2 to 1-4/2	NM NM NM NM NM NM SE	

Continued next page



FITTINGS	CABLE RANGE				TYPE	
8402	2-10/2 3-14/2 to 3-10/2			1-8/2 to 1-6/2 2-14/3 to 2-10/3 1-8/3 to 1-6/3 1-14/3 & 1-12/3 1-14/3 & 1-10/3 1-12/3 & 1-10/3 1-8/2 to 1-4/2 1-.640 2-.448 1-.550 & 1-.375	NM NM NM NM NM NM SE SE Flex Cord Flex Cord	
NM75	1-6/2 1-6/3	1-8/2 1-8/3	1-10/2 1-10/3	2-14/2 2-12/2	2-10/2 2-10/3	NM NM
NM95	1-14/2 to 1-6/2 1-14/3 to 1-6/3		2-14/2 to 2-10/2 2-14/3 to 2-10/3		1-14/2 and 1-12/2 1-14/2 and 1-10/2 1-12/2 and 1-10/2 1-14/3 and 1-12/3	NM NM NM
NM842			3 to 4 14/2 to 10/2 plus any combination thereof. 2-14/3 & 1-14/2 to 2-14/3 & 1-10/2 3-14/3 to 3-12/3 2-14/3 & 1-12/3 2-12/3 & 1-14/3 to 2-12/3 & 1-10/2 2-14/2 & 1-14/3 to 2-14/2 & 1-10/3 2-12/2 & 1-14/3 to 2-12/2 & 1-10/3	2-10/2 & 1-14/3 to 2-10/2 & 1-12/3 1-14/2 & 1-12/2 & 1-14/3 1-14/2 & 1-10/2 & 1-14/3 1-14/2 & 1-12/2 & 1-12/3 1-14/2 & 1-10/2 & 1-12/3 1-12/3 & 1-14/2 1-12/3 & 1-8/2	NM NM NM NM NM NM NM	
1" KO						
843, 843S	2-10/3 to 2-8/3 1-6/2 & 1-8/2 2-6/2 to 1-8/3 2-8/3 & 1-6/2 3-8/2 to 3-6/2	1-6/2 to 1-4/2 1-8/3 to 1-4/3 2-10/3 to 2-8/2 1-8/3 to 1-6/3 1-12/3 & 1-8/2		1-10/3 & 1-8/2 1-10/3 & 1-8/2 2-8/2 1-4/3 1-12/3 & 1-10/3	NM, SE NM, SE NM, SE NM, SE NM, SE	
NM843	2-10/3 and 2-8/2	1-8/3 to 1-4/3 1-8/3 and 2-6/2 2-8/3 and 1-6/2		3 to 6 14/3	NM NM NM	
Any combination of above with minimum Outer Diameter of .580 and a maximum Outer Diameter of .960.						
NM96	1-4/3 to 8/3	1-6/2 to 4/2			NM	
1-1/4" KO						
NM844				1-4/3 to 1-6/3 2-6/3 to 2-10/3 4-10/2 10-12/2 9-14/2 1-.750 1-.580 x .950	NM NM NM NM Flex Cord Flex Cord	