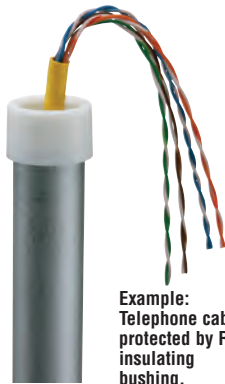




Insulating Bushings

For Rigid • IMC. Press fit.
Holds firmly in place while pulling cables.



Example:
Telephone cable protected by Rigid insulating bushing.

Meets 2008 NEC code requirements for 300-15(c) protection. Listed for use in environmental air handling spaces per 2008 NEC code requirements 300-22(c).

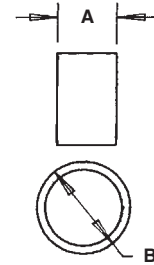
CATALOG NUMBER	UPC/DCI/NAED MFG #01 8997	TRADE SIZE	UNIT PKG	STD PKG	DIM A	DIM B
RGD50	51930	1/2	100	1000	.531	.989
RGD75	51932	3/4	100	1000	.531	1.185
RGD100	51933	1	100	100	.625	1.542
RGD125	51934	1-1/4	100	100	.625	1.891
RGD150	51935	1-1/2	100	100	.625	2.062
RGD200	51936	2	50	50	.625	2.655
EMT250*	12240	2-1/2	25	25	1.225	3.062
EMT300*	12245	3	25	25	1.225	3.690
EMT350*	12250	3-1/2	25	25	1.231	4.187
EMT400*	12255	4	25	25	1.233	4.815

See page B-1 for EMT Insulating Bushings size 1/2" through 4".

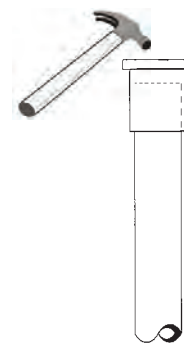
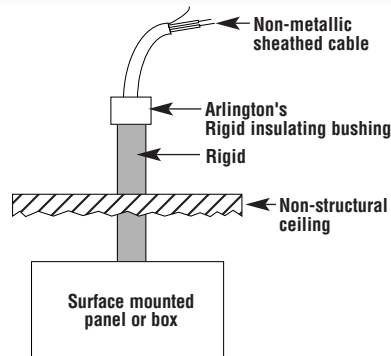
*Can also be used for EMT.



E105706 LR49636



Arlington's Rigid Insulating Bushings protect cables from abrasion by rigid. Examples: Power, Cable TV, computer datalines, telephone/modem, audio/video cables, alarm systems, security systems. Rigid is often used to protect cables where damage could occur in a house or building.



Place board over bushing and tap onto Rigid or EMT with hammer.



Conduit Caps

Conduit cap and insulating bushing.



RGD200C

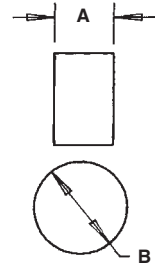
CATALOG NUMBER	UPC/DCI/NAED MFG #01 8997	TRADE SIZE	UNIT PKG	STD PKG	DIM A	DIM B
RGD50C	51937	1/2	100	1000	.531	.840
RGD75C	51938	3/4	100	1000	.531	1.056
RGD100C	51939	1	100	100	.625	1.280
RGD125C	51940	1-1/4	100	100	.625	1.660
RGD150C	51941	1-1/2	100	100	.625	1.915
RGD200C	51942	2	50	50	.625	2.377
EMT250C*	12215	2-1/2	25	25	1.225	3.062
EMT300C*	12217	3	25	25	1.225	3.690
EMT350C*	12219	3-1/2	25	25	1.231	4.187
EMT400C*	12221	4	25	25	1.233	4.815

See page B-1 for EMT Insulating Bushings size 1/2" through 4".

*Can also be used for EMT.



E105706 LR49636



Use this capped version to seal off conduit during concrete pours. Then remove cap/seal with razor knife or use screwdriver to punch hole in cap. (EMT300C)



String can be used to aid removal.

Long Conduit Nipples

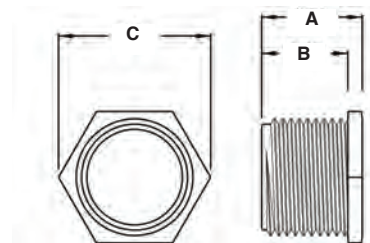
Zinc die-cast.



CATALOG NUMBER	UPC/DCI/NAED MFG #01 8997	EMT SIZE	UNIT PKG	STD PKG	DIM A	DIM B	DIM C
501L	50130	1/2	100	1000	.900	.800	1.055
502L	50230	3/4	50	500	.900	.800	1.300
503L	50330	1	25	100	.900	.770	1.670



E60812 LR49636





Conduit Nipples

Zinc die-cast.

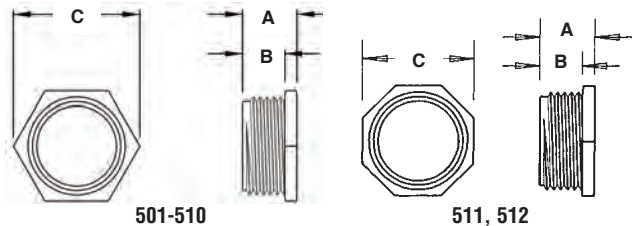


CATALOG NUMBER	UPC/DCI/NAED MFG #01 8997	TRADE SIZE	UNIT PKG	STD PKG	DIM A	DIM B	DIM C
501	00501	1/2	100	1000	.585	.425	1.050
502	00502	3/4	50	500	.614	.514	1.310
503	00503	1	25	100	.654	.518	1.616
504	00504	1-1/4	10	100	.810	.578	1.978
505	00505	1-1/2	10	100	.835	.613	2.410
506	00506	2	10	50	.888	.676	2.945
507	00507	2-1/2	10	30	1.200	.876	3.555
508	00508	3	10	10	1.375	1.008	4.390
509	00509	3-1/2	10	10	1.375	1.008	4.925
510	00510	4	5	5	1.375	1.011	5.420
511*	00511	5	1	1	1.700	1.232	5.812
512*	00512	6	1	1	2.000	1.500	7.000

* Malleable.



E60812 LR49636



Conduit Nipples

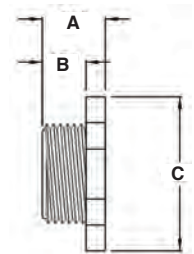
Non-metallic.



CATALOG NUMBER	UPC/DCI/NAED MFG #01 8997	TRADE SIZE	UNIT PKG	STD PKG	DIM A	DIM B	DIM C
NM501	54501	1/2	100	1000	.754	.654	1.047
NM501EL	54584	1/2	100	1000	1.884	1.784	.946
NM502	54502	3/4	50	500	.779	.534	1.300
NM503	54503	1	25	100	.900	.575	1.592
NM504	54504	1-1/4	10	100	.900	.575	2.415
NM505	54505	1-1/2	10	100	.912	.662	2.623
NM506	54506	2	10	50	.975	.570	3.096



E60812 LR49636





3-Piece Coupling Rigid • IMC

Zinc die-cast.

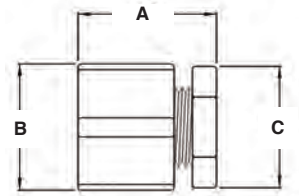


CATALOG NUMBER	UPC/DCI/NAED MFG #01 8997	TRADE SIZE	STD PKG	DIM A	DIM B	DIM C
200	00200	1/2	50	1.430	1.310	1.250
201	00201	3/4	50	1.520	1.610	1.560
202	00202	1	25	1.700	2.125	2.100
203	00203	1-1/4	25	2.125	2.400	2.415
204	00204	1-1/2	25	2.125	2.890	2.940
205	00205	2	20	2.360	3.400	3.500
206	00206	2-1/2	10	2.520	4.030	4.390
207	00207	3	5	2.580	4.620	4.930
208	00208	3-1/2	5	2.645	5.350	5.425
209	00209	4	2	3.420	5.870	5.780
210*	00210	5	1	4.375	7.000	7.000
211*	00211	6	1	4.375	8.250	8.250

*Malleable



E60812 LR49636



3/4" Offset Nipples

Zinc die-cast.

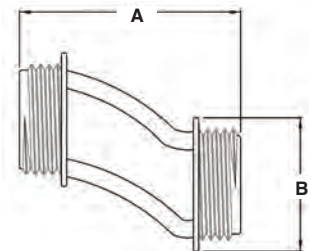


CATALOG NUMBER	UPC/DCI/NAED MFG #01 8997	TRADE SIZE	KO SIZE	UNIT PKG	STD PKG	DIM A	DIM B
6A2	61200	1/2	1/2	20	200	2.460	1.000
6A3	61300	3/4	3/4	10	100	2.560	1.220
6A4	61400	1	1	10	100	2.535	1.525
6A5	61500	1-1/4	1-1/4	10	40	2.937	1.910
6A6	61600	1-1/2	1-1/2	10	40	3.080	2.125
6A7	61700	2	2	10	10	3.145	2.665
6A8*	61800	2-1/2	2-1/2	2	2	3.970	3.280
6A9*	61900	3	3	1	1	4.420	3.795
6A10*	64000	3-1/2	3-1/2	1	1	5.000	4.477
6A11*	64002	4	4	1	1	5.000	4.960

*Malleable



E60812 LR49636



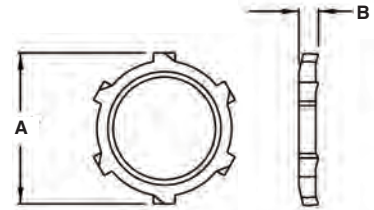


Conduit Locknuts

Plated steel.



CATALOG NUMBER	UPC/DCI/NAED MFG #01 8997	TRADE SIZE	UNIT PKG	STD PKG	DIM A	DIM B
401	00401	1/2	200	2000	1.125	.130
402	00402	3/4	100	1000	1.383	.140
403	00403	1	100	1000	1.730	.160
404	00404	1-1/4	50	250	2.080	.187
405	00405	1-1/2	50	250	2.376	.187
406	00406	2	25	250	2.890	.250
407	00407	2-1/2	30	30	3.470	.250
408	00408	3	25	25	4.165	.250
409	00409	3-1/2	25	25	4.700	.275
410	00410	4	25	25	5.320	.275
411	00411	5	10	10	6.487	.450
412	00412	6	10	10	7.830	.450

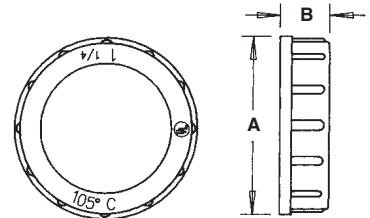


Plastic Insulating Bushings

105° C rated.



CATALOG NUMBER	UPC/DCI/NAED MFG #01 8997	TRADE SIZE	UNIT PKG	STD PKG	DIM A	DIM B
440	00440	1/2	100	1000	1.050	.365
441	00441	3/4	100	1000	1.280	.390
442	00442	1	50	500	1.632	.490
443	00443	1-1/4	25	250	1.986	.535
444	00444	1-1/2	25	250	2.160	.550
445	00445	2	25	125	2.680	.600
446	00446	2-1/2	10	100	3.150	.635
447	00447	3	10	50	3.800	.725
448	00448	3-1/2	10	50	4.275	.725
449	00449	4	10	50	4.775	.750
4491	04491	5	5	5	6.350	.975
4492	04492	6	5	5	7.475	.975





**Combination
Threaded Rigid
and Set-Screw EMT
to Box**

90° pulling elbows with cover and gasket. Zinc die-cast.

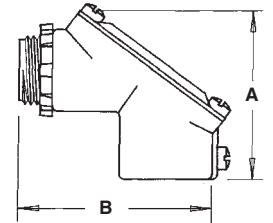


CATALOG NUMBER	UPC/DCI/NAED MFG #01 8997	TRADE SIZE	UNIT PKG	STD PKG	DIM A	DIM B
9100	91005	1/2	5	50	2.030	1.945
9110	91100	3/4	5	50	2.260	2.140
9120	50165	1	5	25	2.610	2.610
9130	50167	1-1/4	2	10	3.037	3.037

See hub illustration below.



E20643 LR49636



**Combination
Threaded Rigid
and Set-Screw EMT
90° Pulling Elbow**

90° pulling elbows with cover and gasket. Zinc die-cast.

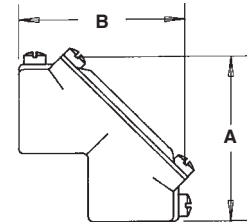


CATALOG NUMBER	UPC/DCI/NAED MFG #01 8997	TRADE SIZE	UNIT PKG	STD PKG	DIM A	DIM B
HL5000	83105	1/2	10	100	2.120	2.120
HL7500	83175	3/4	5	50	2.380	2.380
HL100	50171	1	5	25	3.040	3.040
HL125	50173	1-1/4	2	10	3.900	3.900

See hub illustration above.



E20643 LR49636



**Watertight
Conduit Hubs**

For rigid • IMC conduit. With insulated throat. Zinc die-cast.

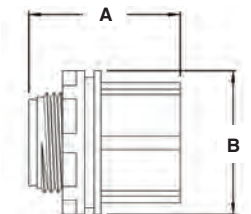


CATALOG NUMBER	UPC/DCI/NAED MFG #01 8997	TRADE SIZE	STD PKG	DIM A	DIM B
WH1	58100	1/2	10	1.325	1.325
WH2	58200	3/4	10	1.450	1.512
WH3	58300	1	10	1.450	1.790
WH4	58400	1-1/4	5	1.575	2.295
WH5	58500	1-1/2	2	1.700	2.450
WH6	58600	2	2	1.700	2.875
WH7	58700	2-1/2	1	2.045	3.325
WH8	58800	3	1	2.150	4.040
WH9	58900	3-1/2	1	2.420	4.550
WH10	58101	4	1	2.420	5.030
WH11*	58103	5	1	3.000	6.750
WH12*	58105	6	1	3.085	7.600

*Malleable.



E60812 LR49636



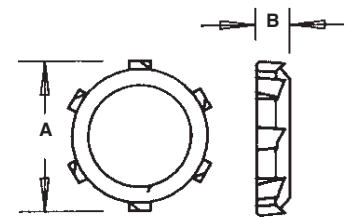


Steel Sealing Locknut

With PVC molded seal.



CATALOG NUMBER	UPC/DCI/NAED MFG #01 8997	TRADE SIZE	STD PKG	DIM A	DIM B
SL50	13500	1/2	50	1.125	.230
SL75	13750	3/4	50	1.375	.240
SL100	13100	1	25	1.715	.260
SL125	13125	1-1/4	25	2.065	.300
SL150	13150	1-1/2	25	2.375	.300
SL200	13200	2	25	2.885	.350
SL250	13250	2-1/2	10	3.450	.350
SL300	13300	3	10	4.125	.350
SL350	13350	3-1/2	10	4.675	.375
SL400	13400	4	10	5.225	.375
SL500	13501	5	10	6.487	.550
SL600	13600	6	10	7.830	.550

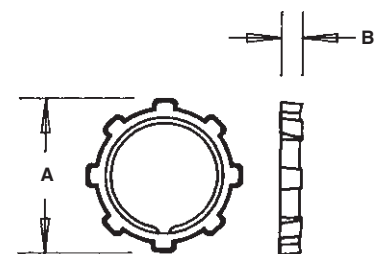


Die-Cast Locknuts

Cast thread. Zinc die-cast.



CATALOG NUMBER	UPC/DCI/NAED MFG #01 8997	TRADE SIZE	UNIT PKG	STD PKG	DIM A	DIM B
DLN1	43510	1/2	200	2000	1.100	.160
DLN2	43520	3/4	100	1000	1.387	.160
DLN3	43530	1	100	500	1.685	.190
DLN4	43540	1-1/4	50	250	2.115	.190
DLN5	43550	1-1/2	50	250	2.370	.190
DLN6	43560	2	25	250	2.885	.190
DLN7	43570	2-1/2	60	60	3.450	.250
DLN8	43580	3	50	50	4.190	.250
DLN9	43590	3-1/2	50	50	4.700	.250
DLN10	43511	4	30	30	5.300	.250



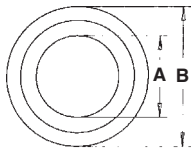


Reducing Washers

Plated steel.



Note: A bonding jumper is recommended when using reducing washers to provide a reliable grounding/bonding path.



CATALOG NUMBER	UPC/DCI/NAED MFG #01 8997	SIZE	UNIT PKG	STD PKG	DIM A	DIM B	DIM C
RW1	95100	3/4 x 1/2	250	1000	.870	1.420	.035
RW2	95200	1 x 1/2	100	400	.870	1.710	.035
RW3	95300	1 x 3/4	100	400	1.060	1.710	.035
RW4	95400	1-1/4 x 1/2	200	200	.870	2.080	.035
RW5	95500	1-1/4 x 3/4	200	200	1.060	2.080	.035
RW6	95600	1-1/4 x 1	200	200	1.380	2.080	.035
RW7	95700	1-1/2 x 1/2	100	100	.870	2.635	.035
RW8	95800	1-1/2 x 3/4	100	100	1.060	2.635	.035
RW9	95900	1-1/2 x 1	100	100	1.335	2.635	.035
RW10	95101	1-1/2 x 1-1/4	100	100	1.690	2.635	.035
RW11	95110	2 x 1/2	50	50	.870	3.265	.035
RW12	95120	2 x 3/4	50	50	1.060	3.265	.035
RW13	95130	2 x 1	50	50	1.335	3.265	.035
RW14	95140	2 x 1-1/4	50	50	1.690	3.265	.035
RW15	95150	2 x 1-1/2	50	50	1.935	3.265	.035
RW16	95160	2-1/2 x 1/2	50	50	.870	3.265	.035
RW17	95170	2-1/2 x 3/4	50	50	1.060	3.265	.035
RW18	95180	2-1/2 x 1	50	50	1.370	3.265	.035
RW19	95190	2-1/2 x 1-1/4	50	50	1.750	3.265	.035
RW20	95201	2-1/2 x 1-1/2	50	50	1.935	3.265	.035
RW21	95210	2-1/2 x 2	50	50	2.425	3.265	.035
RW22	95220	3 x 1/2	25	25	.870	4.490	.040
RW23	95230	3 x 3/4	25	25	1.060	4.490	.040
RW24	95240	3 x 1	25	25	1.360	4.490	.045
RW25	95250	3 x 1-1/4	25	25	1.750	4.490	.040
RW26	95260	3 x 1-1/2	25	25	1.935	4.490	.040
RW27	95270	3 x 2	25	25	2.425	4.490	.040
RW28	95280	3 x 2-1/2	25	25	2.940	4.490	.040
RW29	95290	3-1/2 x 1/2	10	10	.870	5.000	.060
RW30	95301	3-1/2 x 3/4	10	10	1.060	5.000	.060
RW31	95310	3-1/2 x 1	10	10	1.360	5.000	.060
RW32	95320	3-1/2 x 1-1/4	10	10	1.750	5.000	.060
RW33	95330	3-1/2 x 1-1/2	10	10	1.935	5.000	.060
RW34	95340	3-1/2 x 2	10	10	2.425	5.000	.060
RW35	95350	3-1/2 x 2-1/2	10	10	2.920	5.000	.060
RW36	95360	3-1/2 x 3	10	10	3.560	5.000	.060
RW37	95370	4 x 1/2	10	10	.870	5.500	.065
RW38	95380	4 x 3/4	10	10	1.060	5.500	.065
RW39	95390	4 x 1	10	10	1.360	5.500	.065
RW40	95401	4 x 1-1/4	10	10	1.715	5.500	.065
RW41	95410	4 x 1-1/2	10	10	1.970	5.500	.065
RW42	95420	4 x 2	10	10	2.435	5.500	.065
RW43	95430	4 x 2-1/2	10	10	2.920	5.500	.065
RW44	95440	4 x 3	10	10	3.560	5.500	.065
RW45	95450	4 x 3-1/2	10	10	4.050	5.500	.065

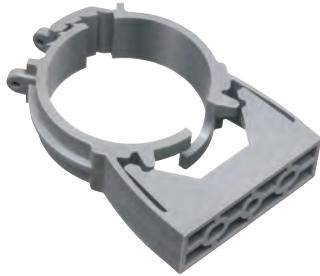


Pipe Hangers

One-piece, non-metallic.
UV rated.



NM2000



NM2080

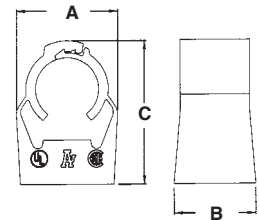
CATALOG NUMBER	UPC/DCI/NAED MFG #01 8997	RIGID SIZE*	EMT SIZE	LT SIZE	FLEX SIZE	ENT SIZE	COPPER TUBING	COPPER PIPE	STD PKG	DIM A	DIM B	DIM C
NM1900	54514	-	-	5/16	-	-	1/2	-	100	.844	.668	1.270
NM2000	54515	-	1/2	3/8	-	-	-	3/8	100	.992	.795	1.412
NM2005	54525	1/2	-	1/2	1/2	1/2	-	1/2	100	1.077	.795	1.588
NM2010	54516	-	3/4	-	-	-	3/4	-	100	1.178	.800	1.667
NM2015	54526	3/4	-	3/4	3/4	3/4	-	3/4	100	1.277	.800	1.826
NM2020	54517	-	1	-	-	-	1	-	100	1.377	.790	1.983
NM2025	54518	1	-	1	1	1	-	1	100	1.582	.830	2.180
NM2030	54528	-	1-1/4	-	-	-	1-1/4	-	100	1.700	.820	2.346
NM2040	54519	1-1/4	1-1/2	-	-	-	1-1/2	1-1/4	100	1.830	.830	2.523
NM2045	54544	1-1/2	-	1-1/2	1-1/2	-	-	1-1/2	100	2.212	.860	2.846
NM2150	54547	-	-	-	-	-	2	-	50	2.640	.910	3.100
NM2050	54520	2	2	2	2	-	-	2	50	3.020	.910	3.470
NM2060	54521	2-1/2	2-1/2	2-1/2	2-1/2	-	-	-	50	3.460	1.115	5.095
NM2070	54522	3	3	3	3	-	-	-	25	4.224	1.362	6.153
NM2080	54523	3-1/2	3-1/2	3-1/2	3-1/2	-	-	-	25	4.720	1.548	7.000
NM2090	54524	4	4	4	4	-	-	-	10	5.365	1.743	7.850

*Rigid sizes also same for IMC and PVC.

For additional information on QuickLATCH plumbing applications call or visit our website.



E161207 LR49636



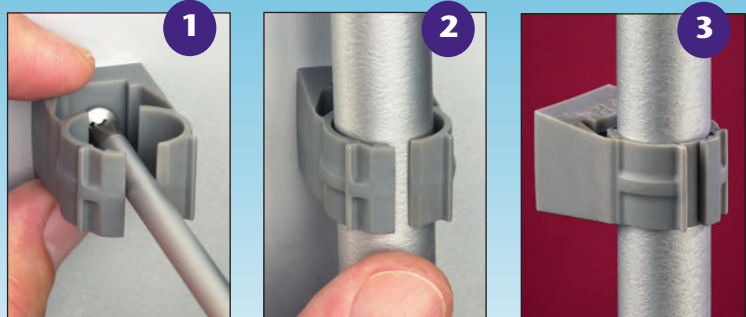
QuickLATCH™
Use it anywhere you would use a pipe hanger!

Features and Benefits

- Saves 25 seconds per installation...over 20¢ at \$30.00 per hour labor rate
- Costs the same as a steel pipe hanger with bolt and nut
- Conduit snaps into place, locking automatically
- Accommodates thinwall, rigid conduit, PVC conduit, or copper
- Mounts horizontally or vertically
- UV rated for outdoor application
- Corrosion resistant
- Listed for use in environmental air handling spaces per 2008 NEC code requirement 300-22(c)
- 2-1/2" to 4" hangers feature tabs with openings for the optional securing of a cable tie

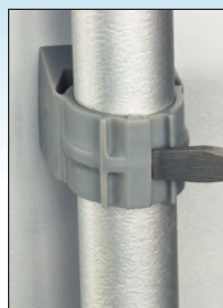
Installation Instructions

1. Mount to wall, strut, stud, or threaded rod up to 1/4-20
2. Press pipe down firmly into QuickLATCH to lock it in place
3. **That's it!**



To Remove...

Use a screwdriver to lift tab.



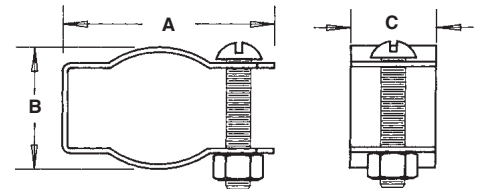


Pipe Hangers

With bolt and nut. Plated steel.

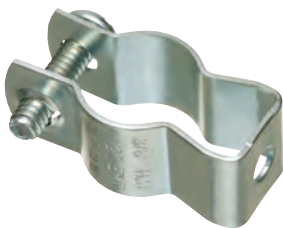


CATALOG NUMBER	UPC/DCI/NAED MFG #01 8997	TRADE SIZE	RIGID SIZE	EMT SIZE	STD PKG	DIM A	DIM B	DIM C
2000	02000	0	3/8 x 1/2	1/2	100	1.875	.990	.750
2010	02010	1	3/4	3/4	100	2.175	1.260	.875
2020	02020	2	1	1	100	2.370	1.295	.875
2025	02025	2-1/2 to 3	1-1/4	1-1/4 to 1-1/2	100	3.175	1.965	.875
2040	02040	4	1-1/2	-	100	3.780	2.220	1.065
2050	02050	5	2	2	50	4.100	2.450	1.210
2060	02060	6	2-1/2	2-1/2	50	4.800	3.180	1.240
2070	02070	7	3	3	25	5.375	3.750	1.250
2080	02080	8	3-1/2	3-1/2	25	6.187	4.187	1.270
2090	02090	9	4	4	10	6.240	4.430	1.270

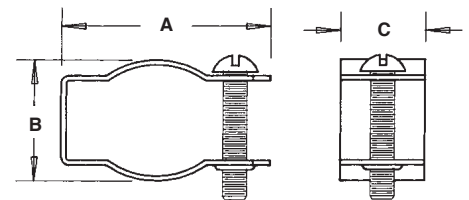


Pipe Hangers

With formed thread in one end of the hanger, nut not required. Plated steel.



CATALOG NUMBER	UPC/DCI/NAED MFG #01 8997	TRADE SIZE	RIGID SIZE	EMT SIZE	STD PKG	DIM A	DIM B	DIM C
2200	22000	0	3/8 x 1/2	1/2	100	1.875	.990	.750
2210	22100	1	3/4	3/4	100	2.175	1.260	.875
2220	22200	2	1	1	100	2.370	1.295	.875
2225	22250	2-1/2	-	1-1/4	100	3.175	1.965	.875
2230	22300	3	1-1/4	1-1/2	100	3.255	1.875	.875
2240	22400	4	1-1/2	-	100	3.780	2.220	1.065
2250	22500	5	2	2	50	4.100	2.450	1.210





Reducing Bushings

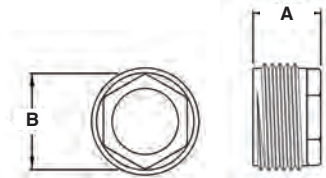
Zinc die-cast.



CATALOG NUMBER	UPC/DCI/NAED MFG #01 8997	TRADE SIZE	UNIT PKG	STD PKG	DIM A	DIM B
522	00522	3/4 x 1/2	50	500	.650	.920
523	00523	1 x 1/2	25	100	.715	1.125
524	00524	1 x 3/4	25	100	.715	1.125
525	00525	1-1/4 x 1/2	25	25	.820	1.470
526	00526	1-1/4 x 3/4	25	25	.820	1.470
527	00527	1-1/4 x 1	25	25	.820	1.470
528	00528	1-1/2 x 1/2	25	25	.850	1.700
529	00529	1-1/2 x 3/4	25	25	.850	1.700
530	00530	1-1/2 x 1	25	25	.850	1.700
531	00531	1-1/2 x 1-1/4	25	25	.850	1.700
532	00532	2 x 1/2	10	10	.970	2.230
533	00533	2 x 3/4	10	10	.970	2.230
534	00534	2 x 1	10	10	.970	2.230
535	00535	2 x 1-1/4	10	10	.970	2.230
536	00536	2 x 1-1/2	10	10	.970	2.230



E60812 LR49636



Larger Reducing Bushings

Zinc die-cast.

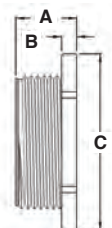


CATALOG NUMBER	UPC/DCI/NAED MFG #01 8997	TRADE SIZE	UNIT PKG	STD PKG	DIM A	DIM B	DIM C
1274	01274	2-1/2 x 1-1/4	5	5	2.090	.430	2.845
1275	01275	2-1/2 x 1-1/2	5	5	1.125	.430	2.820
1276	01276	2-1/2 x 2	5	5	1.200	.300	3.485
1283	01283	3 x 1	5	5	1.785	.500	4.075
1284	01284	3 x 1-1/4	5	5	2.100	.410	3.445
1285	01285	3 x 1-1/2	5	5	2.020	.440	3.460
1286	01286	3 x 2	5	5	2.000	.400	3.380
1287	01287	3 x 2-1/2	5	5	1.390	.375	4.395
1296	01296	3-1/2 x 2	2	2	1.905	.565	4.575
1297	01297	3-1/2 x 2-1/2	2	2	2.020	.450	3.945
1298	01298	3-1/2 x 3	2	2	1.385	.380	4.920
1307	01307	4 x 2-1/2	2	2	2.070	.570	5.250
1308	01308	4 x 3	2	2	1.775	.500	5.250
1309	01309	4 x 3-1/2	2	2	1.400	.375	5.420

Reducing bushings are rain tight in threaded hubs. Also, reducing bushings, unlike reducing washers, maintain grounding path and are able to pass UL high current testing.



E60812 LR49636



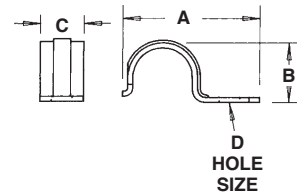


1-Hole Rigid Straps

Snap-on type. Plated steel.



CATALOG NUMBER	UPC/DCI/NAED MFG #01 8997	TRADE SIZE	UNIT PKG	STD PKG	DIM A	DIM B	DIM C	DIM D
340	00340	1/2	50	500	1.915	.875	.625	.250
341	00341	3/4	50	500	2.230	1.050	.750	.250
342	00342	1	25	250	2.615	1.295	.875	.312
343	00343	1-1/4	25	100	2.975	1.630	.875	.375
344	00344	1-1/2	25	100	3.660	1.860	1.000	.437
345	00345	2	25	100	4.150	2.240	1.125	.562
346	00346	2-1/2	25	25	4.927	2.958	1.245	.550
347	00347	3	25	25	5.560	3.441	1.250	.550
348	00348	3-1/2	10	10	6.337	3.951	1.250	.575
349	00349	4	10	10	6.811	4.441	1.240	.575

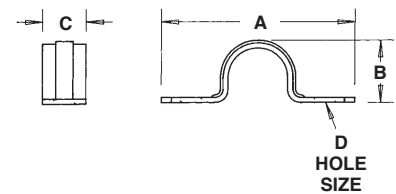


2-Hole Rigid Straps

Snap-on type. Plated steel.



CATALOG NUMBER	UPC/DCI/NAED MFG #01 8997	TRADE SIZE	UNIT PKG	STD PKG	DIM A	DIM B	DIM C	DIM D
350	00350	1/2	50	500	2.440	.900	.620	.200
351	00351	3/4	50	500	2.810	1.060	.690	.200
352	00352	1	25	250	3.350	1.365	.750	.275
353	00353	1-1/4	25	100	4.110	1.700	.865	.275
354	00354	1-1/2	25	100	4.450	1.960	.940	.275
355	00355	2	25	150	5.350	2.240	.995	.325
356	00356	2-1/2	25	25	6.025	2.855	.985	.345
357	00357	3	25	25	6.460	3.425	.995	.345
358	00358	3-1/2	10	10	7.300	3.925	.990	.345
359	00359	4	10	10	7.895	4.435	.995	.345



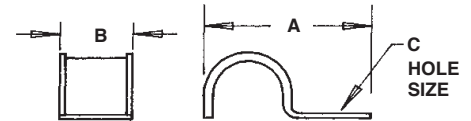


1-Hole Straps

For rigid conduit. Malleable.



CATALOG NUMBER	UPC/DCI/NAED MFG #01 8997	TRADE SIZE	UNIT PKG	STD PKG	DIM A	DIM B	DIM C
3100	03100	1/2	50	500	1.437	.625	.312
3101	03101	3/4	50	500	1.750	.750	.312
3102	03102	1	25	500	2.125	.937	.312
3103	03103	1-1/4	25	250	2.375	1.062	.437
3104	03104	1-1/2	25	250	2.750	1.062	.500
3105	03105	2	25	150	3.937	1.250	.562
3106	03106	2-1/2	25	25	3.937	1.250	.562
3107	03107	3	25	25	5.187	1.750	.562
3108	03108	3-1/2	10	10	5.562	2.125	.750
3109	03109	4	10	10	6.500	2.250	.750



Clamp Back Spacer

Malleable.



CATALOG NUMBER	UPC/DCI/NAED MFG #01 8997	TRADE SIZE	UNIT PKG	STD PKG	DIM A	DIM B	DIM C
CB1	30100	1/2	50	500	2.062	1.000	.500
CB2	30105	3/4	50	500	2.375	1.062	.500
CB3	30110	1	25	500	3.000	1.250	.562
CB4	30115	1-1/4	25	250	3.500	1.500	.653
CB5	30120	1-1/2	25	250	4.000	1.600	.812
CB6	30125	2	25	150	4.750	2.000	.986
CB7	30130	2-1/2	25	25	5.800	2.437	.812
CB8	30135	3	25	25	6.687	2.625	.875
CB9	30140	3-1/2	10	10	7.125	2.875	1.062
CB10	30145	4	10	10	8.875	3.062	1.062

