



Siding Mounting Kits with Threaded Openings

Non-metallic fixture box with two threaded openings to add another fixture or outlet later. For flat surfaces or all siding types. Paintable. UV rated plastic for long outdoor life.



8161TR



8171TR

Features and Benefits

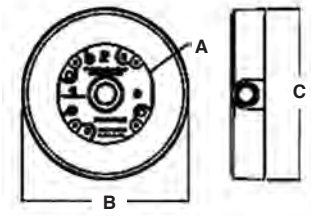
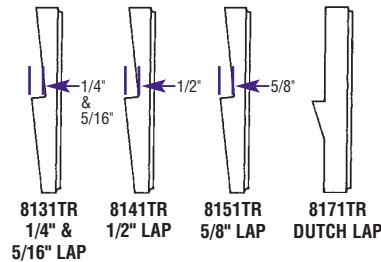
- Threaded openings offer convenience when adding another fixture or outlet
- Box allows for the installation of conduit horizontally or vertically
- Fast and easy to install...*after* siding is up
- Textured, paintable surface
- Includes NM cable connector, (4) screws, and (2) 1/2" NPT plugs
- Saves time. Convenient!
- Also see our new threaded opening outlet boxes

CATALOG NUMBER	UPC/DCI/NAED MFG #01 8997	SIDING TYPE	UNIT PKG	STD PKG	DIM A	DIM B	DIM C
8131TR	00875	1/4" & 5/16" Rigid	1	10	3.937 Diameter x 1.203 Deep	6.720	6.719
8141TR	00876	1/2" Lap	1	10	3.937 Diameter x 1.203 Deep	6.720	6.719
8151TR	00877	5/8" Lap	1	10	3.937 Diameter x 1.203 Deep	6.720	6.719
8161TR	00878	Flat Surfaces	1	10	3.937 Diameter x 1.203 Deep	6.720	6.719
8171TR	00879	Dutch Lap	1	10	3.937 Diameter x 1.203 Deep	6.720	6.719

Add suffix "GC" to Catalog # when ordering in Canada, for example 8131TRGC. PATENTS PENDING.

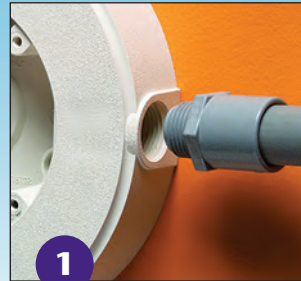


E170558 LR49636



8161TR
11.5 cu. in.

Installation Instructions on Flat Surfaces - 8161TR



1 Pull wire and attach box to flat surface. Use threaded opening(s) and PVC conduit to install additional fixture(s).



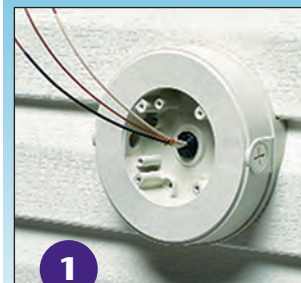
2 Install fixture(s) (per manufacturer's instructions).



Perfect for adding security or flood lights.

Add another fixture or outlet box, the easy way!

Installation Instructions on Siding - 8171TR shown



1 Pull wire and attach box to siding surface.



2 Use threaded opening(s) and PVC conduit to install additional fixture(s). Install fixture(s) (per manufacturer's instructions).



Shown with our new threaded opening outlet box, **FS8171T**.