



QO Load Center, Page 1-5



Homeline Load Center, Page 1-11



Combination Service Entrance Devices, Page 1-19

QO® Miniature Circuit Breakers	1-2
QO® Plug-On Circuit Breakers	1-2
Accessories	1-4
QO® Load Centers	1-5
Indoor-1Ø, Main Lug	1-5
Indoor, 1Ø Main Circuit Breaker	1-6
Rainproof 1Ø, Main Lugs, Main Circuit Breaker	1-7
3Ø, Main Lugs, Main Circuit Breaker	1-8
<i>New!</i> Backup Power Solutions	1-9
Special Applications	1-10
QO® and Homeline® Load Centers	1-11
Load Center Value Pack	1-11
Load Center Accessories	1-11
QO Load Center Accessories	1-12
QO and Homeline® Accessories	1-13
Homeline® Circuit Breakers	1-14
Homeline® Load Centers	1-15
Indoor, 1Ø, Main Lug, Main Circuit Breaker	1-15
Rainproof, 1Ø, Main Lug, Main Circuit Breakers	1-16
QO® and Homeline® Load Centers	1-17
Indoor Load Centers—Dimensions, Knockouts	1-17
Rainproof—Dimensions, Knockouts, Bolt-on Hubs	1-18
Combination Service Entrance Devices	1-19
<i>New!</i> Meter Mains, 100—200 A	1-19
All-In-Ones, 100—225 A	1-20
Meter Mains and All-In-Ones, 300—400 A	1-21
Circuit Breakers, Accessories, Hubs	1-22
Dimensions	1-23
Enclosed Devices	1-24
Servicepak® Power Outlet Panels	1-25



LOAD CENTERS

Square D brand QO® miniature circuit breakers are plug-on products for use in QO load centers, NQOD panelboards, NQOD OEM interiors or Speed-D® switchboard distribution panels. Bolt-on QOB circuit breakers are for use in NQOD panelboards or interiors.▲
The Square D exclusive Qwik-Open® mechanism, with a trip reaction within 1/60th of a second, is standard on all 1P 15 A and 20 A QO circuit breakers.

QO 1P



1 Space Required

QOT 1P Tandem



1 Space Required

QO 2P



2 Spaces Required

QO2200 2P 200 A



4 Spaces Required

QO 3P



3 Spaces Required

Table 1.1: Plug-On Circuit Breakers

Amperes Rating ■	1P—120/240 Vac		2P—120/240 Vac Common Trip		2P—240 Vac + Common Trip		3P—240 Vac Common Trip	
	Cat. No.	\$ Price	Cat. No.	\$ Price	Cat. No.	\$ Price	Cat. No.	\$ Price
10 k AIR								
10 A	QO110	29.10	QO210	67.00	—	—	QO310	248.00
15 A	QO115★▼	29.10	QO215★	67.00	QO215H	200.00	QO315★	248.00
20 A	QO120★▼	29.10	QO220★	67.00	QO220H	200.00	QO320★	248.00
25 A	QO125★	29.10	QO225★	67.00	QO225H	200.00	QO325★	248.00
30 A	QO130★	29.10	QO230★	67.00	QO230H	200.00	QO330★	248.00
35 A	QO135★	29.10	QO235★	67.00	—	—	QO335★	248.00
40 A	QO140★	29.10	QO240★	67.00	QO240H	200.00	QO340★	248.00
45 A	QO145★	29.10	QO245★	67.00	—	—	QO345★	248.00
50 A	QO150★	29.10	QO250★	67.00	QO250H	200.00	QO350★	248.00
60 A	QO160★	29.10	QO260★	67.00	QO260H	200.00	QO360★	248.00
70 A	QO170★	67.00	QO270★	134.00	QO270H	224.00	QO370★	315.00
80 A	—	—	QO280★	189.00	QO280H	315.00	QO380★	366.00
90 A	—	—	QO290★	189.00	QO290H	315.00	QO390★	366.00
100 A	—	—	QO2100★	189.00	QO2100H	315.00	QO3100★	366.00
110 A	—	—	QO2110★	428.00	—	—	—	—
125 A	—	—	QO2125★	428.00	—	—	—	—
150 A	—	—	QO2150★△◇	491.00	—	—	—	—
175 A	—	—	QO2175★△◇	491.00	—	—	—	—
200 A	—	—	QO2200★△◇	491.00	—	—	—	—
Molded Case Switch 60 A max.—240 Vac		—	—	—	QO200	70.00	QO300	248.00
Molded Case Switch 100 A max.—240 Vac		—	—	—	QO2000★	200.00	QO3000★	366.00
22 k AIR★								
15 A	QO115VH▼	63.00	QO215VH□	146.00	—	—	QO315VH□	371.00
20 A	QO120VH▼	63.00	QO220VH□	146.00	—	—	QO320VH□	371.00
25 A	QO125VH	73.00	QO225VH□	146.00	—	—	QO325VH□	371.00
30 A	QO130VH	73.00	QO230VH□	146.00	—	—	QO330VH□	371.00
40 A	—	—	QO240VH□	146.00	—	—	QO340VH□	371.00
50 A	—	—	QO250VH□	146.00	—	—	QO350VH□	371.00
60 A	—	—	QO260VH□	146.00	—	—	QO360VH□	371.00
70 A	—	—	QO270VH□	224.00	—	—	QO370VH□	477.00
80 A	—	—	QO280VH□	315.00	—	—	QO380VH□	530.00
90 A	—	—	QO290VH□	315.00	—	—	QO390VH□	530.00
100 A	—	—	QO2100VH□◇	315.00	—	—	QO3100VH□	530.00
110 A	—	—	QO2110VH□◇	1034.00	—	—	—	—
125 A	—	—	QO2125VH□◇	1034.00	—	—	—	—
150 A	—	—	QO2150VH△◇	1061.00	—	—	—	—
175 A	—	—	QO2175VH△◇	1061.00	—	—	—	—
200 A	—	—	QO2200VH△◇	1061.00	—	—	—	—
42 k AIR★								
40 A	—	—	QOH240★	317.00	—	—	—	—
45 A	—	—	QOH245★	317.00	—	—	—	—
50 A	—	—	QOH250★	317.00	—	—	—	—
60 A	—	—	QOH260★	317.00	—	—	—	—
70 A	—	—	QOH270	528.00	—	—	—	—
80 A	—	—	QOH280	651.00	—	—	—	—
90 A	—	—	QOH290	651.00	—	—	—	—
100 A	—	—	QOH2100	651.00	—	—	—	—
110 A	—	—	QOH2110★	1389.00	—	—	—	—
125 A	—	—	QOH2125	1389.00	—	—	—	—
65 k AIR★								
15 A	QH115▼	117.00	QH215	293.00	—	—	QH315★	507.00
20 A	QH120▼	117.00	QH220	293.00	—	—	QH320	507.00
25 A	QH125★	117.00	QH225★	293.00	—	—	QH325★	507.00
30 A	QH130	117.00	QH230	293.00	—	—	QH330	507.00

- ▲ See Digest Section 1 for load centers, and Section 9 for panelboards and interiors.
- 10–30 A circuit breakers are suitable for use with 60°C or 75°C conductors. 35–125 A circuit breakers are suitable for use with 75°C conductors.
- ◆ UL Listed 5 k AIR on corner grounded Delta systems.
- ♦ UL Listed as HACR type for use with air conditioning, heating and refrigeration equipment having motor group combinations and marked for use with HACR type circuit breakers.
- ▼ UL Listed as SWD (switching duty) rated. Suitable for switching 120 Vac fluorescent lighting loads.
- △ Requires four spaces (1 AWG–300 kcmil Al/Cu.) Suitable for switching 120 Vac fluorescent lighting loads.
- UL Listed for use ahead of QO, QO-GFI, QO-EPD, QOT, QO-AFI, and QO-PL 10 k AIR circuit breakers to permit their application at 22 kA fault level.
- ◇ 100 A maximum branch mounted opposite.
- ◇ Order only. Contact your local Field Office.
- ▼ Includes two circuit breakers (one QO2030 and one QO3020) and handle tie QOTHT.
- Not suitable for use in 3Ø panels. Use only in 1Ø panel rated 150 A or greater.

Table 1.2: QO/QOB Ring Terminal

(20% \$ Price Adder)—Factory-installed only

Ampere Rating	Poles	Suffix
10–30 A	1, 2, 3	5237
35–60 A	1, 2	5238
35–50 A	3	5238
70–110 A	2	5273
60–100 A	3	5273

Table 1.3: Wire Sizes■

Circuit Breaker Type	Ampere Rating	Wire Size (AWG/kcmil)
QO 1P	10–30 A	14–8 Al/Cu
	10–30 A	(2) 14–10 Cu
	35–70 A	8–2 Al/Cu
QO 2P	10–30 A	14–8 Al/Cu
	10–30 A	(2) 14–10 Cu
	35–70 A	8–2 Al/Cu
	80–125 A	4–2/0 Al/Cu
QO 3P	10–30 A	14–8 Al/Cu, (2) 14–10 Cu
	35–70 A	8–2 Al/Cu
QOB-VH	110–150 A	4–300 Al/Cu
QOT	15–20 A	12–8 Al 14–8 Cu
QO-AFI, QO-GFI or QO-EPD	15–30 A	12–8 Al 14–8 Cu
	40, 50, 60 A	12–4 Al 14–6 Cu
QO-PL	10–60 A	12–2 Al 14–2 Cu

Table 1.4: QOT Tandem Circuit Breakers

Ampere Rating■	Cat. No.★	\$ Price
1P—120/240 Vac		
15 A and 15 A	QOT1515	58.00
15 A and 20 A	QOT1520	58.00
20 A and 20 A	QOT2020	58.00
2P—120/240 Vac Common Trip		

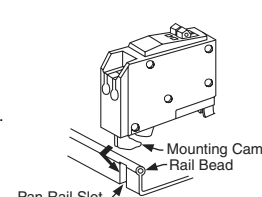
Order two QOT1515 or QOT2020 circuit breakers and handle tie QOTHT for common switching of center two poles.

Table 1.5: Replacement Tandem Circuit Breakers

For use in Old Style Non-Class CTL
QO Load Centers—10 k AIR

Ampere Rating■	Cat. No.★	\$ Price
1P—120/240 Vac—1 Space Required		
15 A and 15 A	QO1515	73.00
15 A and 20 A	QO1520	73.00
20 A and 20 A	QO2020	73.00
20 A and 30 A	QO2030	73.00
30 A and 20 A	QO3020	73.00
Two 1P Individual Trip—120/240 Vac—2 Spaces Required		
15 A and 15 A	Order Two QO1515 or QO2020 circuit breakers and handle tie QOTHT	—
15 A and 20 A		
20 A and 20 A	—	—
20 A and 30 A	QO20303020▼	134.00
30 A and 20 A	—	—

QOT Tandem



Current limiting QOT tandem circuit breakers have a mounting cam as shown. Installation into a QO load center can only be made in those positions having a mounting pan rail slot. Meets Paragraph 408.15 of the NEC®. UL Listed as Class CTL

Interrupting Ratings Page 7-2
Accessories Page 7-12
Dimensions Page 7-53

QO® Arc-Fault Circuit Breaker

QO arc-fault circuit breakers provide protection for Series and Parallel Type Arcing as required by the NEC and local code adoption, and comply with UL1699.

Table 1.6: QO Arc Fault Circuit Breakers▲

Circuit Breaker Type	Ampere Rating	1P 120 Vac		1P 120 Vac	
		10 k AIR		22 k AIR	
		1 Space Required		1 Space Required	
		Cat. No.	\$ Price	Cat. No.	\$ Price
Combination Arc-fault Interrupter	15	QO115CAFI	282.00	QO115VHCAFI	534.00
	20	QO120CAFI	282.00	QO120VHCAFI	534.00



QO-GFI

Qwik-Gard® circuit breakers provide overload and short circuit protection, combined with Class A ground fault protection. Class A denotes a ground fault circuit interrupter that will trip when a fault current to ground is 6 mA or more, for people protection. Do not connect to more than 250 feet of load conductor for the total one-way run to prevent nuisance tripping.

Table 1.7: QO-GFI Circuit Breakers *New!*

Qwik-Gard Circuit Breakers With Ground Fault Circuit Interrupter								
Ampere Rating	1P 120 Vac				2P Common Trip 120/240 Vac		3P Common Trip 208Y/120 Vac	
	10 k AIR		22 k AIR		10 k AIR		10 k AIR	
	1 Space Required		1 Space Required		2 Spaces Required		3 Spaces Required	
	Cat. No.	\$ Price	Cat. No.	\$ Price	Cat. No.	\$ Price	Cat. No.	\$ Price
15	QO115GFI	233.	QO115VHGFI	482.	QO215GFI	413.	QO315GFI	791.
20	QO120GFI	233.	QO120VHGFI	482.	QO220GFI	413.	QO320GFI	791.
25	QO125GFI	233.	QO125VHGFI	482.	QO225GFI	413.	—	—
30	QO130GFI	233.	QO130VHGFI	482.	QO230GFI	413.	QO330GFI	791.
40	—	—	—	—	QO240GFI	413.	QO340GFI	791.
50	—	—	—	—	QO250GFI	413.	QO350GFI	791.
60	—	—	—	—	QO260GFI★	413.	—	—



QO-EPD/EPE

QO-EPD/EPE circuit breakers provide overload and short circuit protection combined with Class B ground fault protection. They are designed to provide ground fault protection of equipment at a 30 milliampere level (EPD) or 100 milliamp level (EPE). They are not designed to protect people from electrical shock.

Table 1.8: QO-EPD Circuit Breakers *New!*

Ampere Rating	1P 120 Vac		2P Common Trip 120/240 Vac		3P Common Trip 240 Vac			
	10 k AIR		10 k AIR		10 k AIR			
	1 Space Required		2 Spaces Required		3 Spaces Required			
	Cat. No.	\$ Price	Cat. No.	\$ Price	Cat. No.	\$ Price	Cat. No.	\$ Price
15	QO115EPD	410.	QO215EPD	660.	QO315EPD	1077.	QO315EPE	1077.
20	QO120EPD	410.	QO220EPD	660.	QO315EPD	1077.	QO315EPE	1077.
25	QO125EPD	410.	QO225EPD	660.	—	—	—	—
30	QO130EPD	410.	QO230EPD	660.	QO315EPD	1077.	QO315EPE	1077.
40	—	—	QO240EPD	660.	QO315EPD	1077.	QO315EPE	1077.
50	—	—	QO250EPD	660.	QO315EPD	1077.	QO315EPE	1077.
60	—	—	QO260EPD★	660.	—	—	—	—



QO-SWN

Switch Neutral Common Trip 2008 NEC® 514.11

Table 1.9: QO-SWN Circuit Breakers

Ampere Rating	2 Wire 120 Vac		3 Wire 120/240 Vac	
	10 k AIR		10 k AIR	
	2 Spaces Required		3 Spaces Required	
	Cat. No.	\$ Price	Cat. No.	\$ Price
10	QO210SWN	95.00	QO310SWN	143.00
15	QO215SWN	95.00	QO315SWN	143.00
20	QO220SWN	95.00	QO320SWN	143.00
25	QO225SWN	95.00	QO325SWN	143.00
30	QO230SWN	95.00	QO330SWN	143.00
40	QO240SWN	95.00	QO340SWN	143.00
50	QO250SWN	95.00	QO350SWN	143.00



QO-HID

HID circuit breakers are for use on circuits feeding fluorescent and high intensity discharge (HID) lighting systems such as mercury vapor, metal halide, or high pressure sodium. These circuit breakers are physically interchangeable with QO circuit breakers.

Table 1.10: QO-HID Circuit Breakers

Ampere Rating	1P 120/240 Vac		2P Common Trip 120/240 Vac		3P Common Trip 240 Vac	
	10 k AIR		10 k AIR		10 k AIR	
	1 Space Required		2 Spaces Required		3 Spaces Required	
	Cat. No.	\$ Price	Cat. No.	\$ Price	Cat. No.	\$ Price
15	QO115HID	38.10	QO215HID	87.00	QO315HID	300.00
20	QO120HID	38.10	QO220HID	87.00	QO320HID	300.00
25	QO125HID	38.10	QO225HID	87.00	QO325HID	300.00
30	QO130HID	38.10	QO230HID	87.00	QO330HID	300.00
40	QO140HID	38.10	QO240HID	87.00	—	—
50	QO150HID	38.10	QO250HID	87.00	—	—

QO-K

Key operated QO circuit breakers are available in single-pole construction and can be mounted in any single-pole space which will accept a standard QO. These circuit breakers can be turned ON or OFF or to RESET with a special key (catalog number QOK10) included with the circuit breaker. These circuit breakers are UL Listed and available as shown in the table.

Table 1.11: QO-K Circuit Breakers

120 Vac—10 k AIR (1 Space Required)		
Ampere Rating	Cat. No.	\$ Price
10	QO110K	164.00
15	QO115K	164.00
20	QO120K	164.00
25	QO125K	164.00
30	QO130K	164.00

QO-HM

High magnetic trip circuit breakers are recommended for applications where high initial inrush may occur and for individual dimmer applications.

Table 1.12: QO-HM Circuit Breakers

Ampere Rating	1P	
	Cat. No.	\$ Price
120 Vac—10 k AIR		
15 A	QO115HM	30.60
20 A	QO120HM	30.60

Non-automatic (Standard) Miniature Switches

Miniature non-automatic switches have the same physical packaging as miniature circuit breakers, but open only when the handle is switched to the OFF position.

Non-automatic switches provide no overcurrent protection or short circuit protection. They must not be used on systems that have an available fault current greater than the values listed in the table.

Non-automatic switches are UL Listed per UL 1087 and are CSA certified.

Table 1.13: QO Non-Automatic Miniature Switches, 240 Vac 10 kA

Ampere Rating	2P		3P	
	Cat. No.	\$ Price	Cat. No.	\$ Price
60	QO200	70.00	QO300	248.00
100	QO2000	200.00	QO3000	366.00

- ▲ UL Listed as HACR type for use with air conditioning, heating and refrigeration equipment having motor group combinations and marked for use with HACR type circuit breakers.
- UL Listed as SWD (switching duty) rated. Suitable for switching 120 Vac fluorescent lighting loads.
- ◆ 10–30 A circuit breakers are suitable for use with 60°C or 75°C conductors. 35–60 A circuit breakers are suitable for use with 75°C conductors.
- ★ Suitable only for feeding 240 Vac and 208 Vac two-wire loads. Does not contain load neutral connection.
- ▼ See note in Instruction Bulletin when using in an enclosure with a QO403 or QON prefix.

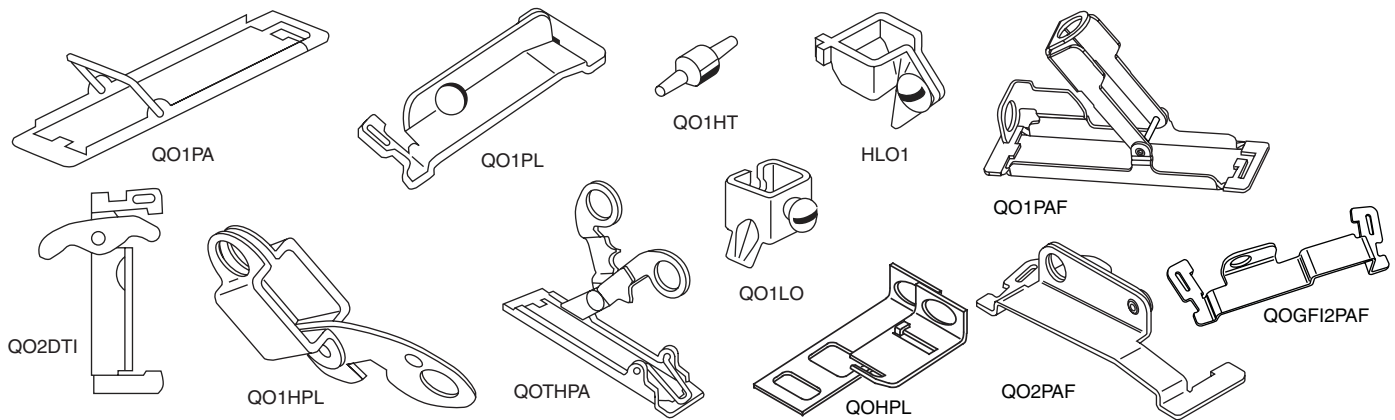
Interrupting Ratings Page 7-2
Accessories Page 7-12
Dimensions Page 7-53

LOAD CENTERS

Table 1.14: Accessories for use with QO and QOB Miniature Circuit Breakers

Description	Cat. No.	\$ Price	Schedule	
Handle Attachments				
Handle Tie:	Converts any two adjacent 120/240 Vac 1P QO circuit breakers to independent trip 2P Converts any two adjacent 120/240 Vac 1P side-by-side QOT circuit breakers to independent trip 2P	QO1HT QOTHT	3.80 3.80	DE2E DE2E
Handle Clamp:	Clamp for holding QO 1P handle in ON or OFF position Clamp for holding QO or Q1 either 1P, 2P or 3P circuit breaker handles in ON or OFF position	QO1LO HLO1	3.80 9.90	DE2E DE2E
Handle Padlock Attachment: for Padlocking in ON or OFF position	For padlocking 1P QO circuit breaker in ON or OFF position	QOHPL	9.90	DE2E
	Loose attachment	QO1PA	10.70	DE2E
	Fixed attachment	QOTHPA	11.10	DE2E
	For padlocking 1P side-by-side QOT circuit breaker in ON or OFF position	GF12PA	9.20	DE2A
	For padlocking 2P QO-GFI circuit breakers in either ON or OFF position, fixed attachment.			
For 2P and 3P QO and Q1 standard circuit breakers which require padlocking in either ON or OFF position.	Loose attachment	QO1HPL	10.70	DE2E
	Fixed attachment	QO1PL	10.70	DE2E
Handle Padlock Attachment: for Padlocking in OFF position	For padlocking 1P QO circuit breaker in OFF position only, fixed attachment.	QO1PAF	43.50	DE2E
	For padlocking 2P and 3P QO circuit breakers in OFF position only, fixed attachment.	QO2PAF	25.80	DE2E
	For padlocking 1P QO-GFI, QO-AFI and QO-EPD circuit breakers in OFF position only, fixed attachment.	QOGF1PAF	51.00	DE2E
	For padlocking 2P QO-GFI and QO-EPD circuit breakers in OFF position only, fixed attachment.	QOGF2PAF	38.40	DE2E
Ring Terminal	Ring terminals are available as a factory-installed option.	See page 7-10	+20% Price Adder	DE2A
Sub-feed Lugs	60 A 2P plug-on – 2 spaces required (6–2 Al/Cu)	QO60SL	47.10	DE2A
	125 A 2P plug-on – 2 spaces required (12–2/0 Al/Cu)	QO2125SL	137.00	DE2A
	225 A 2P plug-on – 4 spaces required (4–300 Al/Cu)	QO2225SL▲	308.00	DE2A
	125 A 3P plug-on – 3 spaces required (12–2/0 Al/Cu)	QO3125SL▲	137.00	DE3
Mechanical Interlock Attachment	For interlocking the handles of two 2P or one 2P and one 1P QO and Q1 circuit breakers mounted side-by-side so that only one circuit breaker can be ON at a time (Not QOU)	QO2DTI	24.90	DE2E
With Retaining Kit:	QO2DTI mechanical interlock attachment with retaining kits for securing two adjacent back-fed circuit breakers in dual power supply applications. Can be used with (2) 2Ps or (1) 2P and (1) 1P QO circuit breakers in QO816L100 load centers.	QO2DTIM	63.00	DE2E

▲ Not suitable for use in 3Ø panels. Use only in 1Ø panel rated 150 A or greater.



Factory-Installed Accessories for use with QO and QOB Miniature Circuit Breakers

Factory-installed electrical accessories take up an additional pole space on QO®, QO-GFI, QO-EPD, QO-SWN and QOU circuit breakers. All AC electrical accessories shown below are rated for 50/60 Hz. Accessories are not available for QOB-VH (2P 150 A and 3P 110–150 A) circuit breakers or QO, QOU molded case switches. QO circuit breakers will accept only one accessory per circuit breaker. Undervoltage trip is not available on miniature circuit breakers. Factory-installed accessories are not available for QO-AFI or QO-CAFI Arc Fault Circuit Breakers or on QO2150, QO2175, or QO2200 circuit breakers.

Table 1.15: Factory-Installed Accessories

Accessory	Description	Rated Voltage	Coil Burden	Cat. No. Suffix	\$ Price Adder	Accessory	Description	Contact Comb.	Max. Voltage	Max. Load	Cat. No. Suffix	\$ Price Adder
Shunt Trip	Trips the circuit breaker from a remote location by means of a trip coil energized from a separate circuit. A 120 Vac shunt trip will operate at 55% or more of rated voltage. All other shunt trips will operate at 75% or more of rated voltage. Application • For use with momentary or maintained push button. • Not available on QO-GFI, QO-EPD. • Shunt trip terminals accept (2) 0.14–0.12 AWG Cu.	12 Vac/Vdc 24 Vac/Vdc	60 VA 168 VA	-1042	189.00	Auxiliary Switches	Monitors circuit breaker contact status and provides a remote signal indicating the circuit breaker contacts are OPEN or CLOSED. Application • Auxiliary switch terminals accept (2) 14–12 AWG Cu leads. • Leads (EH): Yellow for "A", Blue for "B", Striped common 18 AWG Cu.	1A 1B	120 Vac 120 Vac	5 A 5 A	-1200 -1201	132.00 132.00
		120 Vac 208 Vac 240 Vac	72 VA 228 VA 288 VA	-1021	189.00							
						Alarm Switches	Used with control circuits and is actuated only when the circuit breaker has tripped. Standard construction includes a normally-open contact. Application • Leads: Alarm switch terminals accept (2) 14–12 AWG Cu leads.	1A	120 Vac	5 A	-2100	132.00

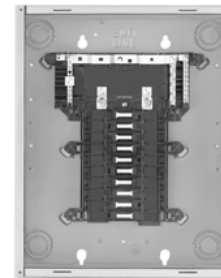
1Ø3W Load Centers, 120/240 Vac, UL Listed

Table 1.16: Main Lugs (Order QO, QOT, QO-EPD, QO-GFI, QO-AFI, and QO-PL branch circuit breakers from pages 1-2 and 1-3)

Mains Rating	Spaces	Max. 1P Circuits▲	Max. Tandem Circuit Breakers	\$ Price (Interior, Box and Cover)	Load Center Box and Interior		Indoor Cover with Door (Order Separately)			Main Wire Size AWG/kcmil		Equipment Ground Bar Kit (Order Separately)		Box No. See Page 1-17
					Cat. No.	\$ Price	Flush Cat. No.	Surface Cat. No.	\$ Price	Al	Cu	Cat. No.	\$ Price	
Fixed Mains—Factory-Installed Main Lugs—10 kA Short Circuit Current Rating ■														
30 A	2	2	0	41.70	QO2L30S◆★	41.70	Cover Included—Without Door			12-10	14-10	PK3GTA1	11.40	1
70 A	2	4	2	69.00	QO24L70F/S▼△	69.00	Cover Included—Without Door			12-3	14-4	PK4GTA	10.80	2
100 A	6	12	6	87.00	QO612L100F/S▼□	87.00	Cover Included—With Door			8-1		PK7GTA	11.70	4
				90.00	QO612L100DF/S▼□	90.00	Cover Included—With Door			8-1		PK7GTA	11.70	4
	8	16	8	131.00	QO816L100F/S▼□	131.00	Cover Included—Without Door			8-1		PK7GTA	11.70	4
				143.00	QO816L100DF/S▼□	143.00	Cover Included—With Door			8-1		PK7GTA	11.70	4
100 A	6	12	6	111.00	QO612L100DFCU/SCU▼□◇	111.00	Cover Included—With Door			8-1		PK7GTA	11.70	4
	8	16	8	174.00	QO816L100DFCU/SCU▼□◇	174.00	Cover Included—With Door			8-1		PK7GTA	11.70	4
125 A	4	8	4	93.00	QO148L125GF/S▼★	93.00	Cover Included—Without Door			12-2/0	14-2/0	PK7GTA*		21
Convertible Mains—Factory-Installed Main Lugs—65 kA Short Circuit Current Rating, QOM1 Main Frame Size—Convertible to Main Circuit Breaker—Cu Bus ■ ▽														
125 A	12	12	0	196.70	QO112L125G	159.00	QOC16UF	QOC16US	37.70	6-2/0		PK9GTA*	6	
	12	24	12	235.70	QO11224L125G	198.00	QOC16UF	QOC16US	37.70			PK15GTA*	6	
	16	16	0	255.70	QO116L125G	218.00	QOC24UF	QOC24US	37.70			PK12GTA*	7	
	16	24	8	300.70	QO11624L125G	263.00	QOC24UF	QOC24US	37.70			PK15GTA*	7	
	20	20	0	271.70	QO120L125G	234.00	QOC24UF	QOC24US	37.70			PK15GTA*	7	
	20	24	4	370.70	QO12024L125G	333.00	QOC24UF	QOC24US	37.70			PK15GTA*	7	
	24	24	0	381.70	QO124L125G	344.00	QOC24UF	QOC24US	37.70			PK15GTA*	7	
32	32	0	434.60	QO132L125G	395.00	QOC32UF	Use Flush	39.60	PK23GTA, LK100AN*	8				
Convertible Mains—Factory-Installed Main Lugs—65 kA Short Circuit Current Rating, QOM2 Main Frame Size—Convertible to Main Circuit Breaker—Cu Bus ■ ▽														
150 A	20	30	10	419.00	QO12030L150G	332.00	QOC30UF	QOC30US	87.00	6-250		PK23GTA, LK100AN*	9	
	24	24	0	431.00	QO124L150G	344.00	QOC30UF	QOC30US	87.00			PK15GTA*	9	
	30	30	0	437.00	QO130L150G	350.00	QOC30UF	QOC30US	87.00			PK23GTA, LK100AN*	9	
200 A	12	12	0	353.00	QO112L200G	266.00	QOC30UF	QOC30US	87.00	6-250		PK15GTA*	9	
	24	36	12	819.00	QO12436L200TFT◆	732.00	QOC40UF	QOC40US	87.00			PK23GTA, LK100AN*	10	
	30	30	0	494.00	QO130L200G	407.00	QOC30UF	QOC30US	87.00			PK23GTA, LK100AN*	9	
	30	40	10	554.00	QO13040L200G	467.00	QOC30UF	QOC30US	87.00			PK23GTA, LK100AN*	9	
	40	40	0	746.00	QO140L200G	659.00	QOC40UF	QOC40US	87.00			PK23GTA, LK100AN*	10	
	40	60	20	944.00	QO14060L200G	857.00	QOC40UF	QOC40US	87.00			(2) PK15GTA*	10	
42	52	10	921.00	QO14252L200G	810.00	QOC42UF	QOC42US	111.00	(2) PK15GTA*	11				
225 A	42	42	0	828.00	QO142L225G	717.00	QOC42UF	QOC42US	111.00	6-300		PK23GTA, LK100AN*	11	
Fixed Mains—Factory-Installed Main Lugs—65 kA Short Circuit Current Rating ■ ▽														
400 A	30	30	0	1641.00	QONQ30LS400 (Int) MH50 (box)◆	1080.00 75.00	NC50NQVF	NC50NQVS	486.00	(1) 1/0-750 or (2) 1/0-300		PK27GTA◆ or PK15GTA6	33.80	15
400 A	42	42	0	1746.00	QONQ42LS400 (Int)◆ MH50 (box)	1185.00 75.00	NC50NQVF	NC50NQVS	486.00	(1) 1/0-750 or (2) 1/0-300		PK15GTA6	53.00	15

Above listings through 200 A mains rating meet Federal Specification W-P-115C as Type 1, Class 2.

- ▲ Maximum single pole branch circuits utilizing QO and/or QOT circuit breakers.
- ▲ UL short circuit current rating depends on lowest interrupting rating of circuit breaker installed.
- ◆ Will not accept QO-EPD or Qwik-Gard® QO-GFI or QO-AFI circuit breakers.
- ★ Mains rated 25 A when Al wire is used.
- ▼ Order F for flush device or S for surface device.
- △ Use 10 AWG maximum size wire for GFI and AFI circuit breakers.
- 70 A Max. branch circuit breaker and 70 A max. back fed main circuit breaker.
- ◇ CU indicates copper bus.
- ◆ Copper bus.
- ▽ UL Listed 5000 A short circuit current rating for corner grounded Delta systems. Use QO-H circuit breakers only.
- Supplied with feed-thru lugs.
- ◆ Factory-included.
- ◆ Interior only, order box separately.
- ◆ PK27GTA includes a 6-2/0 AWG Al/Cu lug.
- PE1A Discount Schedule.



QO120L125G



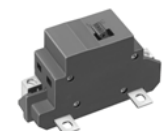
QO816L100F or S without cover

Main Circuit Breaker Kits

Table 1.17: Field-Installed Main Circuit Breaker (Use with Convertible Load Centers Only)

Main Circuit Breaker Rating	QOM1 Frame Size				Lug Wire Size ‡ AWG/kcmil	QOM2 Frame Size †			
	Convertible Load Center Mains Rating	22 k AIR ◆		Main Circuit Breaker Rating		Convertible Load Center Mains Rating	22 k AIR ◆		Lug Wire Size ‡ AWG/kcmil
		Main Circuit Breaker	\$ Price				Main Circuit Breaker	\$ Price	
50 A	100-125	QOM50VH	140.00	12-2/0 Al or Cu	100 A	150-225	QOM2100VH	468.00	4-300 Al or Cu
60 A	100-125	QOM60VH	140.00		125 A	150-225	QOM2125VH	468.00	
70 A	100-125	QOM70VH	140.00		150 A	150-225	QOM2150VH	468.00	
80 A	100-125	QOM80VH	201.00		175 A	200-225	QOM2175VH	468.00	
90 A	100-125	QOM90VH	201.00		200 A	200-225	QOM2200VH	468.00	
100 A	100-125	QOM100VH	201.00		225 A	225	QOM2225VH	468.00	
110 A	125	QOM110VH	468.00						
125 A	125	QOM125VH	468.00						

- ◆ Do not exceed the load center mains rating.
- ◆ 22 k AIR main circuit breaker UL Listed for use ahead of QO, QOT and QO-PL 10 k AIR branch circuit breakers to permit their application on systems with up to 22 kA available fault current.
- ‡ Wire range listed for QOM circuit breaker kits is the wire range of that circuit breaker. To find out maximum wire size permitted in a particular load center per UL, see pages 1-5 through 1-11 under Main Wire Size.
- † Add suffix 1021 for 120, 208 or 240 Vac shunt trip. Add \$126.00.



QOM1 Frame Size 50-125 Amperes



QOM2 Frame Size 100-225 Amperes

1Ø3W—120/240 Vac—UL Listed

Table 1.18: Indoor Main Circuit Breaker (Order QO, QOT, QO-EPD, QO-GFI, QO-AFI and QO-PL Branch Circuit Breakers from pages 1-2 and 1-3.)

Mains Rating	Spaces	Max. Single Pole Circuits▲	Max. Tandem Circuit Breakers	\$ Price (Interior, Box and Cover)	Load Center Box and Interior		Indoor Cover with Door (Order Separately)			Main Wire Size AWG/kcmil Al or Cu	Equipment Ground Bar Kit (Order Separately)		Box No. See Page 1-17
					Cat. No.	\$ Price	Flush Cat. No.	Surface Cat. No.	\$ Price		Cat. No.	\$ Price	
Convertible Mains —Factory-installed Main Circuit Breaker, 22 kA Short Circuit Current Rating, Convertible to Main Lugs (see below) or Lower Amperage Main Circuit Breaker (See page 1-5), ■													
QOM1 Main Circuit Breaker Frame Size—Copper Bus													
100 A	12	12	0	339.70	QO112M100	302.00	QOC12UF	QOC12US	37.70	6-1	PK9GTA	13.40	5
	16	16	0	379.70	QO116M100	342.00	QOC20U100F	QOC20U100S	37.70		PK12GTA	15.80	6
	20	20	0	433.70	QO120M100	396.00	QOC20U100F	QOC20U100S	37.70		PK15GTA	17.10	6
	24	24	0	553.70	QO124M100	516.00	QOC24UF	QOC24US	37.70	6-2/0	PK15GTA	17.10	7
	32	32	0	726.70	QO132M100	689.00	QOC32UF	Use Flush	37.70		PK18GTA	18.80	8
125 A	24	24	0	819.70	QO124M125	782.00	QOC24UF	QOC24US	37.70	6-2/0	PK15GTA	17.10	7
	32	32	0	1041.60	QO132M125	1002.00	QOC32UF	Use Flush	39.60		PK18GTA	18.80	8
Convertible Mains —Factory-Installed Main Circuit Breaker, 22 kA Short Circuit Current Rating													
Convertible to Main Lugs (see below) or Lower Amperage Main Circuit Breaker (See page 1-5) ■													
QOM2 Main Circuit Breaker Frame Size—Copper Bus													
150 A	20	30	10	821.00	QO12030M150	734.00	QOC30UF	QOC30US	87.00	4-250	PK18GTA	18.80	9
	24	24	0	849.00	QO124M150	762.00	QOC30UF	QOC30US	87.00		PK15GTA	17.10	9
	30	30	0	854.00	QO130M150	767.00	QOC30UF	QOC30US	87.00		PK18GTA	18.80	9
	32	32	0	969.00	QO132M150	882.00	QOC40UF	QOC40US	87.00		PK18GTA	18.80	10
200 A	20	40	20	821.00	QO12040M200	734.00	QOC30UF	QOC30US	87.00	4-250	PK23GTA	21.30	9
	24	24	0	866.00	QO124M200	779.00	QOC30UF	QOC30US	87.00		PK15GTA	17.10	9
	24	36	12	1287.00	QO12436M200TFT◇	1200.00	QOC40UF	QOC40US	87.00		PK23GTA and LK100AN□	18.80	10
	30	30	0	879.00	QO130M200	792.00	QOC30UF	QOC30US	87.00		PK18GTA	18.80	9
	30	40	10	957.00	QO13040M200	870.00	QOC30UF	QOC30US	87.00		PK23GTA	21.30	9
	40	40	0	1121.00	QO140M200	1034.00	QOC40UF	QOC40US	87.00		PK23GTA	21.30	10
	40	60	20	1431.00	QO14060M200	1344.00	QOC40UF	QOC40US	87.00		PK23GTA	21.30	10
New! 225 A	42	42	0	1220.00	QO142M200	1109.00	QOC42UF	QOC42US	111.00	4-300	PK23GTA	21.30	11
	42	52	10	1382.00	QO14252M200	1271.00	QOC42UF	QOC42US	111.00		PK23GTA	21.30	11
	40	40	0	1196.00	QO140M225	1085.00	QOC42UF	QOC42US	111.00		PK23GTA	21.30	11
42	42	0	1253.00	QO142M225	1142.00	QOC42UF	QOC42US	111.00		PK23GTA	21.30	11	
Fixed Mains—Factory-installed LAL Main Circuit Breaker, 42 kA Short Circuit Current Rating◆													
300 A	42	42	0	4909.00	QONQ42MS300 (int)★	4243.00	NC62NQVF	NC62NQVS	591.00	(1) 4-500 or (2) 4-3/0	PK27GTA▼ or PK15GTA6	33.80 or 53.00	16
					MH62 (box)△								
400 A	42	42	0	4909.00	QONQ42MS400 (int)★	4243.00	NC62NQVF	NC62NQVS	591.00	(1) 4-500 or (2) 4-250	PK27GTA▼ or PK15GTA6	33.80 or 53.00	16
					MH62 (box)△								

Above listings through 200 A mains rating meet Federal Specification W-P-115c as Type 1, Class 2.

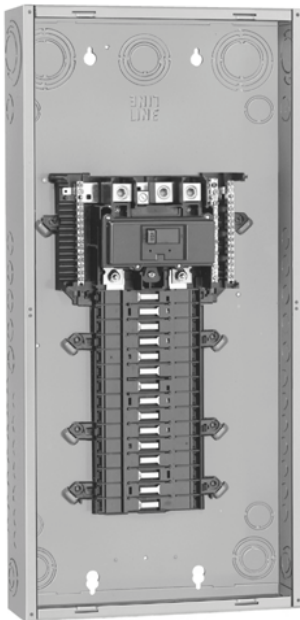
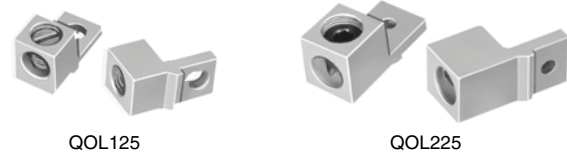
- ▲ Maximum single pole branch circuits utilizing QO and/or QOT circuit breakers.
- 22 k AIR main circuit breaker UL Listed for use ahead of QO, QOT and QO-PL 10 k AIR branch circuit breakers to permit their application on systems with up to 22 kA available fault current.
- ◆ UL short circuit current rating depends on lowest interrupting rating of circuit breakers installed. Also, UL Listed 5000 A short circuit current for corner grounded Delta systems. Use QO-H circuit breakers only.
- ★ Interior only, order box separately.
- ▼ PK27GTA includes a 6-2/0 Al/Cu lug.
- △ PE1A Discount Schedule.
- Factory included.
- ◇ Supplied with feed-thru lugs.

Main Lug Kits

Table 1.19: Field-Installed Main Lugs (Convertible Load Centers Only)

Main Lug Rating★	Use on Convertible Load Center with Mains Rating	Cat. No.	\$ Price	Lug Wire Size▽ AWG/kcmil Al or Cu
125 A	100-125 A	QOL125	44.10	6-2/0
225 A	150-225 A	QOL225	104.00	6-300

- ★ Do not exceed the load center mains rating.
- ▽ Wire range listed for QOL lug kits is the wire range of that lug. To find out maximum wire size permitted in a particular load center per UL, see pages 1-5 through 1-11 under main wire size.
- If main circuit breaker knockout has been removed from the load center's trim, order appropriate filler plate from page 1-13.



QO130M150

1Ø3W—120/240 Vac—UL Listed

Table 1.20: Main Lugs (Order QO, QOT, QO-GFI, QO-EPD, QO-AFI and QO-PL branch circuit breakers from pages 1-2 and 1-3.)

Mains Rating	Spaces	Max. Single Pole Circuits▲	Max. Tandem Circuit Breakers	\$ Price (Interior, Box and Cover)	Load Center Box and Interior		Main Wire Size AWG/kcmil		Equipment Ground Bar Kit (Order Separately)		Box No. See Page 1-17
					Cat. No.	\$ Price	Al	Cu	Cat. No.	\$ Price	
Non-Metallic Enclosure											
Fixed Mains—Factory-installed Main Lugs—10 kA Short Circuit Current Rating											
60 A	2	4	2	102.00	QO24L60NRNM	102.00	14-4	14-4	Factory-installed	—	1NM
Metallic Enclosure											
Fixed Mains—Factory-installed Main Lugs—10 kA Short Circuit Current Rating											
40 A	2	2	0	113.00	QO2L40RB■	113.00	12-6	14-6	PK3GTA1	11.40	1R
70 A	2	4	2	131.00	QO24L70RB■	131.00	12-3	14-4	PK4GTA	10.80	1R
100 A	6	12	6	143.00	QO612L100RB◆	143.00	8-1	Factory-installed	PK7GTA	11.70	2R
	6	12	6	158.00	QO612L100TRB◆	158.00			—	2R	
	8	16	8	231.00	QO816L100RB◆	231.00			PK7GTA	11.70	2R
100 A	6	12	6	174.00	QO612L100RBCU◆★	174.00	8-1	Factory-installed	PK7GTA	11.70	2R
	8	16	8	279.00	QO816L100RBCU◆★	279.00			PK7GTA	11.70	2R
125 A	4	8	4	152.00	QO148L125GRB★	152.00	12-2/0	14-2/0	PK7GTA Factory-included	—	15R
Convertible Mains—Factory-installed Main Lugs—65 kA Short Circuit Current▼◆□											
QOM1 Main Frame Size—Convertible to Main Circuit Breaker—Copper Bus											
125 A	12	12	0	285.00	QO112L125GRB	285.00	6-2/0	Factory-installed	PK9GTA Factory-included	—	3R
	12	24	12	365.00	QO11224L125GRB	365.00			PK15GTA Factory-included	—	3R
	16	24	8	435.00	QO11624L125GRB	435.00			PK15GTA Factory-included	—	4R
	24	24	0	522.00	QO124L125GRB	522.00			PK15GTA Factory-included	—	4R
Convertible Mains—Factory-installed Main Lugs—65 kA Short Circuit Current▼◆□											
QOM2 Main Frame Size—Convertible to Main Circuit Breaker—Copper Bus											
150 A	30	30	0	587.00	QO130L150GRB	587.00	4-250	Factory-installed	PK23GTA, LK100AN Factory-included	—	6R
	12	12	0	480.00	QO112L200GRB	480.00			PK9GTA Factory-included	—	5R
200 A	30	30	0	666.00	QO130L200GRB	666.00	4-250	Factory-installed	PK23GTA, LK100AN Factory-included	—	6R
	30	40	10	714.00	QO13040L200GRB	714.00			PK23GTA, LK100AN Factory-included	—	6R
	40	40	0	971.00	QO140L200GRB	971.00			PK23GTA, LK100AN Factory-included	—	7R
	40	60	20	1262.00	QO14060L200GRB	1262.00			(2) PK15GTA, (1) LK100AN Factory-included	—	7R
	42	52	10	1194.00	QO14252L200GRB	1194.00			(2) PK15GTA, (1) LK100AN Factory-included	—	8R
	42	52	10	1194.00	QO14252L200GRB	1194.00			(2) PK15GTA, (1) LK100AN Factory-included	—	8R
225 A	42	42	0	1310.00	QO142L225GRB	1310.00	4-300	PK23GTA, LK100AN Factory-included	—	8R	

1Ø3W—120/240 Vac—UL Listed

Table 1.21: Main Circuit Breaker Order QO, QOT, QO-GFI, QO-AFI, QO-EPD and QO-PL branch circuit breakers from pages 1-2 and 1-3.

Mains Rating	Spaces	Max. Single Pole Circuits▲	Max. Tandem Circuit Breakers	\$ Price (Interior, Box and Cover)	Load Center Box and Interior		Main Wire Size AWG/kcmil Al or Cu	Equipment Ground Bar Kit (Order Separately)		Box No. See Page 1-17	
					Cat. No.	\$ Price		Cat. No.	\$ Price		
Convertible Mains —Factory-installed Main Circuit Breaker, 22 kA Short Circuit Current Rating											
—Convertible to Main Lugs (see page 1-6) or Lower Amperage Main Circuit Breaker (see page 1-5)◆□											
QOM1 Main Circuit Breaker Frame Size—Copper Bus											
100 A	12	12	0	461.00	QO112M100RB	461.00	6-2/0	Factory-installed	PK9GTA	13.40	3R
	16	16	0	504.00	QO116M100RB	504.00			PK12GTA	15.80	4R
	20	20	0	552.00	QO120M100RB	552.00			PK15GTA	17.10	4R
125 A	24	24	0	954.00	QO124M125RB	954.00	6-2/0	Factory-installed	PK15GTA	17.10	4R
Convertible Mains —Factory-installed Main Circuit Breaker, 22 kA Short Circuit Current Rating											
—Convertible to Main Lugs (see page 1-6) or Lower Amperage Main Circuit Breaker (see page 1-5)◆□											
QOM2 Main Circuit Breaker Frame Size—Copper Bus											
150 A	20	30	10	953.00	QO12030M150RB	953.00	4-250	Factory-installed	PK18GTA	18.80	5R
	30	30	0	1122.00	QO130M150RB	1122.00			PK18GTA	18.80	6R
200 A	20	40	20	954.00	QO12040M200RB	954.00	4-250	Factory-installed	PK23GTA	21.30	5R
	30	30	0	1154.00	QO130M200RB	1154.00			PK18GTA	18.80	6R
	30	40	10	1179.00	QO13040M200GRB	1179.00			PK23GTA	21.30	6R
	40	40	0	1397.00	QO140M200RB	1397.00			PK23GTA	21.30	7R
	40	60	20	1815.00	QO14060M200RB	1815.00			PK15GTA	17.10	7R
	42	42	0	1469.00	QO142M200RB	1469.00			PK23GTA	21.30	8R
225 A	42	52	10	1718.00	QO14252M200RB	1718.00	4-300	Factory-installed	PK15GTA	17.10	8R
	42	42	0	1631.00	QO142M225RB	1631.00			PK23GTA	21.30	8R
QOM1/QOM2 Feed-Thru Main Circuit Breaker With Feed-Thru Lugs—Copper Bus, 22 kA Short Circuit Current Rating◆											
125 A	6	12	6	620.00	QO1612M125FTRB★	620.00	4-2/0	Factory-installed	PK12GTA	15.80	3R
150 A	8	16	8	863.00	QO1816M150FTRB★	863.00	4-250	Factory-installed	PK15GTA-L	35.00	6R
200 A	8	16	8	863.00	QO1816M200FTRB★	863.00	4-250	Factory-installed	PK15GTA-L	35.00	6R

Above listings through 200 A mains rating meet Federal Specification W-P-115c as Type 1, Class 2.

- ▲ Maximum single pole branch circuits utilizing QO and/or QOT circuit breakers.
- Use 10 AWG maximum size wire for AFI and GFI circuit breaker.
- ◆ 70 A max. branch circuit breaker and 70 A max. back fed main circuit breaker.
- ★ Copper bus.
- ▼ UL short circuit current rating depends on lowest interrupting rating of circuit breakers installed.
- ▲ UL Listed 5000 A short circuit current rating for corner grounded Delta systems. Use QO-H circuit breakers only.
- Side hinge door device; allow 1-1/4 in. on left side for door to open.
- ◆ 22 k AIR main circuit breaker UL Listed for use ahead of QO, QOT, QO-GFI, QO-AFI, QO-EPD and QOPL 10 k AIR branch circuit breakers to permit their application on systems up to 22 kA available fault current.
- ★ QO1612M125FTRB provided with QOM1 frame main circuit breaker. QO1816M150FTRB and QO1816M200FTRB provided with QOM2 frame main circuit breaker.

Table 1.22: 3Ø4W 208Y/120 Vac, 3Ø4W 240/120 Vac Delta and 3Ø3W 240 Vac Delta, UL Listed.

(Order QO, QO-GFI, QO-AFI, QO-PL branch circuit breakers from pages 1-2 and 1-3.)

Mains Rating	Max. Number of 1P QO circuit breakers	\$ Price (Interior, Box and Cover)	Load Center Box and Interior		Indoor Cover with Door (Order Separately)			Main Wire Size AWG/kcmil		Equipment Ground Bar Kit (Order Separately)		Box No. See Pages 1-17
			Cat. No.	\$ Price	Flush Cat. No.	Surface Cat. No.	\$ Price	Al	Cu	Cat. No.	\$ Price	
Fixed Mains—Factory-installed Main Lugs—Copper Bus—65 kA Short Circuit Current Rating ▲												
60 A	3	107.00	QO403L60NF/S	107.00	Cover Included With Load Center (No Door)			—	10-6	PK4GTA	7.20	13
125 A	12	369.70	QO312L125G ◊	332.00	QOC16UF	QOC16US	37.70★	6-2/0	6-2/0	Factory-incl.□	—	6
	20	508.70	QO320L125G ◊	471.00	QOC24UF	QOC24US	37.70★			Factory-incl.□	—	7
	24	577.70	QO324L125G ◊	540.00	QOC24UF	QOC24US	37.70★			Factory-incl.□	—	7
200 A	18	530.00	QO318L200G ◊	443.00	QOC30UF	QOC30US	87.00★	6-250	6-250	Factory-incl.△	—	9
	30	707.00	QO330L200G ◊	620.00	QOC30UF	QOC30US	87.00★			Factory-incl.△	—	9
225 A	42	953.00	QO342L225G ◊	842.00	QOC42UF	QOC42US	111.00★	6-300	6-300	Factory-incl.△	—	11
Convertible Mains—Factory-installed QDL Main Circuit Breaker—Copper Bus—25 kA Short Circuit Current Rating ■												
100 A	27	1058.00	QO327M100 ◆	971.00	QOC30UF	QOC30US	87.00★	4-2/0	4-2/0	PK15GTA	17.10	9
125 A	30	1931.00	QO330MQ125★◊	1839.00	QOC342MQF	QOC342MQS	92.00	4-300	4-300	PK18GTA	18.80	12
	30	1931.00	QO330MQ150★◊	1839.00	QOC342MQF	QOC342MQS	92.00			PK18GTA	18.80	12
150 A	42	2119.00	QO342MQ150★◊	2027.00	QOC342MQF	QOC342MQS	92.00	4-300	4-300	PK23GTA	21.30	12
	30	1931.00	QO330MQ200★◊	1839.00	QOC342MQF	QOC342MQS	92.00			PK18GTA	18.80	12
200 A	42	2119.00	QO342MQ200★◊	2027.00	QOC342MQF	QOC342MQS	92.00	4-300	4-300	PK23GTA	21.30	12
	42	2119.00	QO342MQ225★◊	2027.00	QOC342MQF	QOC342MQS	92.00			PK23GTA	21.30	12

Fixed Mains—Factory-installed Main Lugs—Copper Bus—65 kA Short Circuit Current Rating ▲▼												
60 A	3	177.00	QO403L60NRB	177.00	Cover Included			—	10-6	PK4GTA	10.80	10R
125 A	12	485.00	QO312L125GRB	485.00				6-2/0	6-2/0	Factory Incl.□	—	3R
	20	629.00	QO320L125GRB	629.00				6-250	6-250	Factory Incl.△	—	6R
200 A	18	618.00	QO318L200GRB	618.00				6-300	6-300	Factory Incl.△	—	6R
	30	839.00	QO330L200GRB	839.00				6-300	6-300	Factory Incl.△	—	8R
225 A	42	1494.00	QO342L225GRB	1494.00								
Convertible Mains—Factory-installed QDL Main Circuit Breaker—Copper Bus—25 kA Short Circuit Current Rating ■▼												
100 A	27	1185.00	QO327M100RB◆	1185.00	Cover Included			4-2/0	4-2/0	PK15GTA	17.10	6R
125 A	30	2147.00	QO330MQ125RB★	2147.00				4-300	4-300	PK18GTA	18.80	14R
	30	2147.00	QO330MQ150RB★	2147.00				4-300	4-300	PK18GTA	18.80	14R
200 A	30	2147.00	QO330MQ200RB★	2147.00				4-300	4-300	PK18GTA	18.80	14R
	42	2333.00	QO342MQ200RB★	2333.00				4-300	4-300	PK23GTA	21.30	14R
225 A	42	2333.00	QO342MQ225RB★	2333.00				4-300	4-300	PK23GTA	21.30	14R

Above listings through 200 A mains rating meet Federal Specification W-P-115C as Type 1, Class 2.

- ▲ UL short circuit current rating depends on lowest interrupting rating of circuit breaker installed.
- 25 kA short circuit current rating maximum with Square D Type QDL main circuit breaker, or 22 kA SCCR maximum with back-fed Type QO-VH main circuit breaker, feeding QO 10 k AIR branch circuit breakers.
- ◆ Includes factory-installed back fed QO3100VH main circuit breaker.
- ★ 65 kA Short Circuit Current Rating maximum with field-installed Square D type QGL 65 k AIR minimum main circuit breaker feeding QO and Q1 10 k AIR minimum branch circuit breakers.
- ▼ Side hinge door device allow 1-1/4 in. on left side for door to open.
- △ PK23GTA and LK100AN.
- PK15GTA.
- ◊ For Certification to IEC 60439-1 contact the local Square D sales office; otherwise panels are NOT CE marked. (For use on 415Y/240 Vac 3-phase 4-wire, 3,000 Short Circuit Current Rating when QODX...branch circuit breakers are used and 10,000 Short Circuit Current Rating when QO...VS branch circuit breakers are used).
- ☆ DE3A Discount Schedule
- ▽ DE2 Discount Schedule

Table 1.23: 3Ø Main Circuit Breakers

Field-installed alternate main circuit breakers for QO 3Ø main circuit breaker load centers rated 70–225 A. Do not exceed the load center main rating.

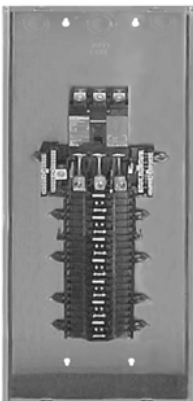
Amperage	25 k AIR	65 k AIR	100 k AIR ◊
70 A	QDL32070	QGL32070	QJL32070
80 A	QDL32080	QGL32080	QJL32080
90 A	QDL32090	QGL32090	QJL32090
100 A	QDL32100	QGL32100	QJL32100
110 A	QDL32110	QGL32110	QJL32110
125 A	QDL32125	QGL32125	QJL32125
150 A	QDL32150	QGL32150	QJL32150
175 A	QDL32175	QGL32175	QJL32175
200 A	QDL32200	QGL32200	QJL32200
225 A	QDL32225	QGL32225	QJL32225
\$ Price (DE2)	1784.00	2442.00	2796.00

◊ When these 3P circuit breakers are used as the main circuit breaker of a 3Ø load center, the maximum AIR rating is 65 kA at 240 Vac and 100 kA at 208 Vac.

Table 1.24: 3Ø Main Lug Kits

Field-installed main lugs for convertible 3Ø main circuit breaker load centers.

Main Lug Amperage Rating	Cat. No.	\$ Price	Lug Wire Size AWG/kcmil
125 A	QOL3125	67.00	6-2/0 Cu/Al
225 A	QOL3225	158.00	6-300 Cu/Al



QO342MQ200

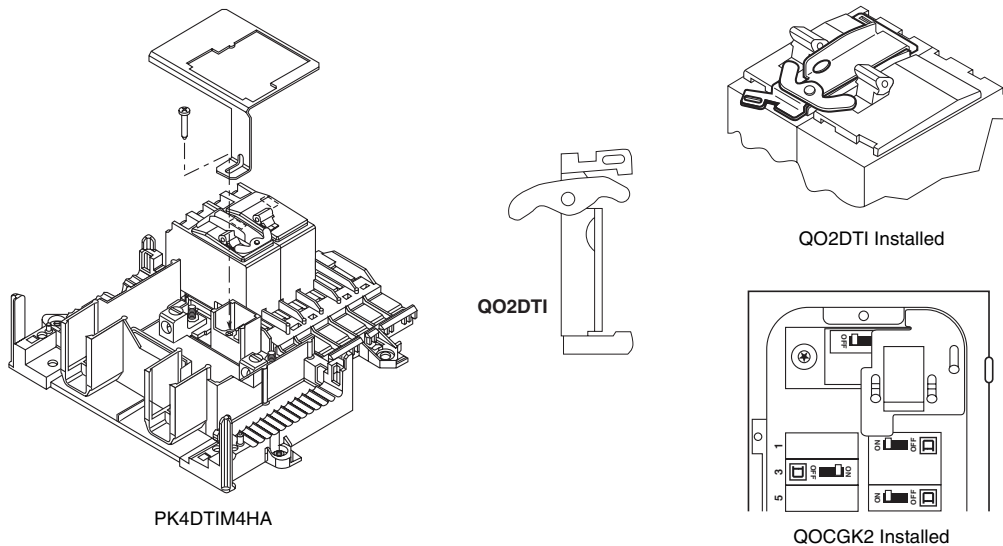


QO312L125G

Table 1.25: Order QO, QOT, QO-EPD, QO-GFI, and QO-AFI Branch Circuit Breakers from pages 1-2 and 1-3.

Mains Rating (A)	Spaces	Max. Single Pole Circuits ▲	Max. Tandem Circuit Breakers	Load Center Box, Interior and Cover		Equipment Grounding Bar Kit (Order Separately)		Main Wire Size AWG/kcmil		Box No. See Page 1-12	
				Cat. No.	\$ Price	Cat. No.	\$ Price	Al	Cu		
Generator Panels for Sub-Feed Applications Type 1 (Indoor)											
1-Phase 3-Wire 120/240 Vac Factory-Installed Main Circuit Breakers with Mechanical Interlock 10,000 RMS Sym. Amperes Short Circuit Current Rating											
INDOOR	30	4	8	4	QO48M30DSGP	563.00	PK7GTA	11.70	14-8	14-8	4
	60	4	8	4	QO48M60DSGP	563.00			8-2	8-2	4
Generator Panels with Power Inlet Plug for Sub-Feed Applications Type 3R (Outdoor)											
1-Phase 3-Wire 120/240 Vac Factory-Installed Main Circuit Breakers with Mechanical Interlock 10,000 RMS Sym. Amperes Short Circuit Current Rating											
RAINPROOF	100	4	8	4	QO1DM10020TRBR	848.00	Factory-Installed	—	—	8-2	—
		4	8	4	QO1DM10030TRBR	848.00			—		—
		4	8	4	QO1DM10050TRBR	1148.00			—		—
Generator Panel—Automatic Transfer Switch (Contact your local Square D Field Sales office for more information.) ■											
1-Phase 3-Wire 120/240 Vac Factory- or Field-Installed Main Circuit Breaker 22,000 RMS Sym. Ampere Short Circuit Current Rating											
INDOOR	150	38	42	42	QO13842MX150	1349.00	PK23GTA	21.30	4-250	4-250	12
	200	38	42	42	QO13842MX200	1499.00	PK23GTA	21.30	4-250	4-250	12
	225	38	42	42	QO13842MX225	1649.00	PK23GTA	21.30	4-250	4-250	12
		38	42	42	QO13842MX225 ♦	1199.00			4-250	4-250	12
	QOC38MXUF (Cover) 149.00 —										
	150	14	28	28	QO11428MX150FTRB★▼	1349.00	PK23GTA	21.30	4-250	4-250	7R
	200	14	28	28	QO11428MX200FTRB★▼	1499.00	PK23GTA	21.30	4-250	4-250	7R
		14	28	28	QO11428MX200FTRB♦★▼	1199.00	PK23GTA	21.30	4-250	4-250	7R
QO Load Center Accessories								Cat. No.	\$ Price	Schedule	
Manual Transfer Equipment Kit		For interlocking the handles of two 2P or one 2P and one 1P QO and Q1 circuit breakers mounted side-by-side so that only one circuit breaker can be "ON" at a time.						QO2DTI	24.90	DE2E	
		QO2DTI mechanical interlock attachment with retaining kits for securing two adjacent back-fed circuit breakers in dual power supply applications. Can be used with (2) 2P or (1) 2P and (1) 1P QO circuit breakers in QO816L100 load centers.						QO2DTIM	63.00	DE2E	
		Secures two 2P circuit breakers to right side of interior when used as back-fed mains, a QO2DTI Kit included for back-up power supply applications. For 1Ø 100-125 ampere convertible main load centers. Series S01 and S02.						PK4DTIM4LA	102.00	DE3A	
		Secures two 2P circuit breakers to right side of interior when used as back-fed mains, a QO2DTI Kit included for back-up power supply applications. For 1Ø 150-225 ampere convertible main load centers. Series S01 and S02.						PK4DTIM4HA	102.00	DE3A	
		Secures two 2P circuit breakers to left side of interior when used as back-fed mains, a QO2DTI Kit included for back-up power supply applications. For 1Ø 100-125 ampere convertible main load centers. Series S01 and S02.						PK4DTIM4LAL	102.00	DE3A	
Generator Circuit Breaker Interlock Kit		For use on "G" and "S" Series NEMA 1 and "G", "S1" and "S2" Series NEMA 3R load centers. Interlocks a QOM1 2P main circuit breaker of a load center (100-125 A) with a QO 2P (15-125 A) branch circuit breaker. Includes a retaining kit.						QOCRBGK1	105.00	DE3A	
		For use on "G" and "S" Series NEMA 1 and "G" and "S1" Series NEMA 3R load centers. Interlocks a QOM2 2P main circuit breaker of a load center (150-225 A) with a QO 2P (15-125 A) branch circuit breaker. Includes a retaining kit.						QOCGK2	105.00	DE3A	
		For use on "S2" Series NEMA 3R load centers. Interlocks a QOM2 2P main circuit breaker of a load center (150-225 A) with a QO 2P (15-125 A) branch circuit breaker. Includes a retaining kit.						QORBGK2	105.00	DE3A	

- ▲ Maximum single pole branch circuits utilizing QO and/or QOT circuit breakers.
- One main circuit breaker is included with panel. NEMA 1 indoor device requires cover ordered separately. Alternate source main circuit breaker (QO 125 A max.) ordered separately. Automatic Transfer Switch and Generator for secondary power source are ordered through a Kohler authorized dealer or contractor.
- ♦ Universal mains - No factory-installed main circuit breaker or main lugs. QOM2 frame size, field-install 22 k AIR. Main circuit breaker or main lugs (see pages 1-5 or 1-6).
- ★ Supplied with feed-thru lugs.
- ▼ Device is rated NEMA 3R and can be used for indoor or outdoor applications.



LOAD CENTERS



LOAD CENTERS

Table 1.26: QO Special Application (Order QO, QOT, QO-EPD, QO-GFI and QO-AFI Branch Circuit Breakers from pages 1-2 and 1-3.)

Mains Rating	Short Circuit Current Rating	Spaces	Max. 1P Circuits ▲	Max. Tandem Circuit Breakers	Load Center ■ Box, Interior, and Cover		Equipment Ground Bar Kit (Order Separately)		Main Wire Size AWG/kcmil		Box No. See Page 1-17	
					Cat. No.	\$ Price	Cat. No.	\$ Price	Al	Cu		
Manufactured Housing:												
1Ø2W 120 Vac—Main Lugs Only—CSA Certified												
30 A ◆	10 kA	2	2	0	QO2L30TTS★	51.00	Factory-installed	12-10	14-10	1		
50 A	10 kA	2	4	2	QO24L50TTS▼	78.00						
1Ø2W 120 Vac—Main Circuit Breaker—CSA Certified												
30 A	10 kA	3	5	2	QO35FM30TTF/S	83.00	Factory-installed	△		3		
1Ø3W 120/240 Vac—Main Lugs Only—CSA Certified												
70 A	10 kA	2	4	2	QO24L70TS▼	78.00	Factory Installed	12-3	14-4	2		
100 A	10 kA	6	12	6	QO612L100TF/S□	86.00		4-1			4	
	10 kA	6	12	6	QO612L100DTF/S□	101.00						
	10 kA	8	16	8	QO816L100TF/S□	137.00						
	10 kA	8	16	8	QO816L100DTF/S□	159.00						
Load Center with Cover: 1Ø3W 120/240 Vac—UL Listed Complete QO Load Center—Box, Interior and Combination Cover in One Package												
Convertible Mains—Factory-Installed Main Lugs ☆—QOM1 Main Frame Size—Convertible to Main Circuit Breaker (See page 1-5)—Copper Bus												
125 A	65 kA	12	12	0	QO112L125GC	188.00	PK12GTA Incl.	6-2/0		6		
	65 kA	12	24	12	QO11224L125GC	249.00	PK15GTA Incl.	6-2/0		6		
	65 kA	20	20	0	QO120L125GC	284.00	PK15GTA Incl.	6-2/0		7		
Convertible Mains—Factory-Installed Main Lugs ☆—QOM2 Main Frame Size—Convertible to Main Circuit Breaker (See page 1-5)—Copper Bus												
150 A	65 kA	30	30	0	QO130L150TC	452.00	PK23GTA, LK100AN Installed	6-250		9		
200 A	65 kA	30	40	10	QO13040L200GC	575.00	PK23GTA, LK100AN Incl.	6-250		9		
Convertible Mains—Factory-Installed Main Circuit Breaker—												
QOM1 Main Frame Size—Convertible to Main Lugs (See page 1-6) or Lower Amperage Main Circuit Breaker (See page 1-5)—Copper Bus ▼												
100 A	22 kA	12	12	0	QO112M100C	351.00	PK9GTA	4-1/0		5		
	22 kA	12	20	8	QO11220M100C	413.00	PK15GTA	4-1/0		5		
	22 kA	16	16	0	QO116M100C	395.00	PK12GTA	4-1/0		6		
	22 kA	20	20	0	QO120M100C	446.00	PK15GTA	4-1/0		6		
125 A	22 kA	32	32	0	QO132M125C	1041.00	PK18GTA	6-2/0		8		
Convertible Mains—Factory-Installed Main Circuit Breaker—												
QOM2 Main Frame Size—Convertible to Main Lugs (See page 1-6) or Lower Amperage Main Circuit Breaker (See page 1-5)—Copper Bus ▼												
150 A	22 kA	20	30	10	QO12030M150C	843.00	PK18GTA	4-250		9		
	22 kA	30	30	0	QO130M150C	870.00	PK18GTA	4-250		9		
200 A	22 kA	20	40	20	QO12040M200C	843.00	PK23GTA	4-250		9		
	22 kA	30	30	0	QO130M200C	896.00	PK18GTA	4-250		9		
	22 kA	30	40	10	QO13040M200C	974.00	PK23GTA	4-250		9		
	22 kA	40	40	0	QO140M200C	1137.00	PK23GTA	4-250		10		

Above listings through 200 A mains rating meet Federal Specification W-P-115c as Type 1, Class 2.

- ▲ Maximum single pole branch circuits utilizing QO and/or QOT circuit breakers.
- Order F for flush device or S for surface device.
- ◆ Mains rating 25 A when Al wire is used.
- ★ Will not accept Qwik-Gard® QO-GFI or QO-AFI circuit breaker.
- ▼ Use 10 AWG maximum size wire for GFI and AFI circuit breakers.
- △ Main circuit breaker is a field-installed standard QO single pole circuit breaker. Order separately from page 1-2.
- 70 A max. branch circuit breaker and 70 A max. back fed main circuit breaker.
- ◇ UL short circuit current rating depends on lowest interrupting rating of circuit breaker installed.
- ☆ UL Listed 5000 A short circuit current rating for corner grounded Delta systems. Use QO-H circuit breakers only.
- ▽ 22 k AIR main circuit breaker UL Listed for use ahead of QO, QOT and QO-PL 10 k AIR branch circuit breakers to permit their application on systems with up to 22,000 A available fault current.

Table 1.27: Auxiliary Gutter

UL Listed for use with standard 1Ø and 3Ø load centers for riser applications. For auxiliary gutter-load center compatibility, see catalog number 1100CT0501

Cat. No.	\$ Price	Cover	Conduit Riser Size	Width	Height	Depth
SDAG26	338.00	Flush	1-3/4, 2, 2-1/2 or #3	13.50	26.12	3.75

- One tap kit required for each riser wire.
- * When used with B300 bolt-on hubs.

Table 1.28: Tap Kits 120/240 Vac—UL Listed for use with Auxiliary Gutter SDAG26

Cat. No.	\$ Price	Use with Auxiliary Gutter Cat. No.	Riser Wire		Tap Off Wire	
			Lug Type	Al/Cu Wire Size	Lug Type	Al/Cu Wire Size
SDGT30020	81.00	SDAG26	Mechanical (Included)	(2) 6 AWG-300 kcmil	Mechanical (Included)	(1) 6-2/0 AWG
SDGT300300	120.00	SDAG26	Mechanical (Included)	(2) 6 AWG-300 kcmil	Mechanical (Included)	(1) 6 AWG-300 kcmil
SDGT300C10C	49.70	SDAG26	Anderson VCELO30516H1 (Not included)	(2) 4 AWG-300 kcmil	Anderson VCELO2114S1 (Not included)	(1) 8-1/0 AWG
SDGT300C300C	70.00	SDAG26	Anderson VCELO30516H1 (Not included)	(2) 4 AWG-300 kcmil	Anderson VCELO30516H1 (Not included)	(1) 4 AWG-300 kcmil
QOGL20 Grounding Terminals	40.70	SDAG26	Mechanical (Included)	(2) 6-2/0 AWG	—	—

Load Center Value Pack

Table 1.29: 1Ø3W—120/240 Vac—UL Listed—Convertible Mains—Factory-installed Main Circuit Breaker Complete Load Center (Box, Interior and Cover) and Selected Branch Circuit Breakers

Mains Rating	Spaces	Max. 1P Circuits▲	Max. Tandem Circuit Breakers	Load Center Box, Interior, Cover and Branch Circuit Breakers			Equipment Ground Bar Kit (Order Separately)		Main Wire Size AWG/kcmil Al/Cu	Box No. See Pages 1-17
				Cat. No.	Included Load Center/Circuit Breakers	\$ Price	Cat. No.	\$ Price		
QO—Copper Bus—Order extra QO, QOT, QO-EPD, QO-GFI, QO-AFI branch circuit breakers from pages 1-2 and 1-3.										
Main Circuit Breaker										
100 A	32	32	0	QOVP2	(1) QO132M100C, (5) QO120	839.00	PK18GTA	18.80	4-2/0	8
200 A	30	40	10	QOVP1	(1) QO13040M200C, (5) QO120	1103.00	PK23GTA	21.30	4-250	9
200 A	30	40	10	QOVP10	(1) QO13040M200C, (10) QO120	1328.00	PK23GTA	21.30	4-250	9
Homeline—Order extra HOM, HOMT, HOM-GFI, HOM-AFI branch circuit breakers from page 1-14.										
Main Lugs										
125 A	12	24	12	HOMVPL2	(1) HOM1224L125TC, (5) HOM120	353.00	Included	—	6-2/0	6
200 A	30	40	10	HOMVPL1	(1) HOM3040L200TC, (6) HOM115, (6) HOM120, (1) HOM230, (1) HOM250	962.00	Included	—	4-250	10
Main Circuit Breaker										
100 A	20	20	0	HOMVP4	(1) HOM20M100C, (5) HOM115	528.00	PK15GTA	17.10	4-2/0	7
100 A	20	20	0	HOMVP5	(1) HOM20M100C, (5) HOM120	528.00	PK15GTA	17.10	4-2/0	7
150 A	30	30	0	HOMVP12	(1) HOM30M150C, (5) HOM120, (1) HOM230	983.00	PK23GTA	21.30	4-250	10
200 A	20	40	20	HOMVP16	(1) HOM2040M200TC, (5) HOM120, (1) HOM230	965.00	Included	—	4-250	9
200 A	30	40	10	HOMVP1	(1) HOM3040M200TC, (5) HOM120, (1) HOM230	1083.00	Included	—	4-250	10
200 A	30	40	10	HOMVP2	(1) HOM3040M200TC, (5) HOM115, (1) HOM230	1083.00	Included	—	4-250	10
200 A	30	40	10	HOMVP9	(1) HOM3040M200TC, (6) HOM115, (6) HOM120, (1) HOM230, (1) HOM250	1328.00	Included	—	4-250	10
200 A	30	40	10	HOMVP14	(1) HOM3040M200TC, (12) HOM120, (1) HOM230, (1) HOM250	1328.00	Included	—	4-250	10
200 A	40	40	0	HOMVP15	(1) HOM40M200C, (10) HOM120	1346.00	PK23GTA	21.30	4-250	12
Homeline—Order extra HOM, HOMT, HOM-GFI, HOM-AFI branch circuit breakers from page 1-14.										
Main Circuit Breaker										
200 A	20	40	20	HOMVPRB1	(1) HOM2040M200RB, (6) HOM115, (6) HOM120, (1) HOM230, (1) HOM250	1253.00	PK23GTA	21.30	4-250	6R

Above listings through 200 A mains rating meet Federal Specification W-P-115c as Type 1, Class 2.
▲ Maximum single pole branch circuits utilizing QO and/or QOT circuit breakers.

Riser Panels

Table 1.30: 1Ø3W 120/240 Vac—Offset Interior Wide Gutter—30 A Maximum Branch Circuit Breaker on left side of interior ■♦

Mains Rating	Spaces	Max. Single Pole Circuits★	Max. Tandem Circuit Breakers	Load Center Box and Interior		Load Center Cover		Equipment Ground Bar Kit (Order Separately)		Main Wire Size AWG/kcmil		Box No. See Page 1-17
				Cat. No.	\$ Price	Cat. No.	\$ Price	Cat. No.	\$ Price	Al	Cu	
Convertible Mains—Factory-installed Main Lugs—65 kA Short Circuit Current Rating												
QOM1 Main Frame Size—Convertible to Main Circuit Breaker (See page 1-5) when used with QOC cover below—Copper Bus												
125 A	12	24	12	QO11224L125WG	338.00	QOC20UFWG	53.00	PK15GTA	17.10	6-2/0	14	
125 A	20	30	10	QO12030L125WG	465.00	QOC20UFWG	53.00	PK15GTA	17.10	6-2/0	14	
Convertible Mains—Factory-installed Main Lugs—65 kA Short Circuit Current Rating												
QOM2 Main Frame Size—Convertible to Main Circuit Breaker (See page 1-5) when used with QOC cover below—Copper Bus												
200 A	30	40	10	QO13040L200WG	701.00	QOC30UFWG	102.00	PK23GTA	21.30	4-250	23	
Convertible Mains—Factory-installed Main Circuit Breaker—22 kA Short Circuit Current Rating												
QOM2 Main Frame Size—Convertible to Main Lugs (See page 1-6)—Copper Bus												
200 A	24	24	0	QO124M200WG125▼	683.00	QOC30UFWG	102.00	PK23GTA	21.30	4-250	23	

Above listings through 200 A mains rating meet Federal Specification W-P-115c as Type 1, Class 2.
■ UL short circuit current rating depends on lowest interrupting rating of circuit breaker installed.
♦ UL Listed 5000 A short circuit current rating for corner grounded Delta systems. Use QO-H circuit breakers only.
★ Maximum single pole branch circuits utilizing QO and/or QOT circuit breakers.
▼ Comes with 125 A main circuit breaker factory installed.

Panelboard-style Covers for Riser Panels

Mono-Flat® Front available for riser panels as an alternative to standard load center cover listed above. Provides a low-profile, aesthetically pleasing solution for high-traffic areas in upscale multi-family applications. Deadfront included. Lock kit not provided. Cover NQC30FWG CANNOT be used when panel has been converted to a main circuit breaker panel. △

Mains Rating of Load Center	Cat. No.	\$ Price
125 A	NQC20FWG	117.00
200 A	NQC30FWG	180.00

△ Order catalog number PK4FL for field-installed lock kit.

LOAD CENTERS
1

1 Table 1.31: QO Load Center Accessories

	Description	Cat. No.	\$ Price	Schedule
Retaining Kit	Secures circuit breaker to interior when used as a back-fed main. For QO612L100F/S, RB, QO612L100DF/S, QO816L100F/S, RB, QO816L100DF/S and QO148L125GF/S, GRB load centers	PK2MB	7.20	DE3A
	Secures 3P circuit breaker without accessories to left side of interior when used as a back-fed main. For 3Ø load centers	PK3MB	14.70	DE3A
	Secures circuit breaker to interior when used as a back-fed main for 2P QO 150–200 A circuit breakers.	PK5RK	14.70	DE3A
	Secures ONE circuit breaker with or without electrical accessories to right side of interior when used as a back-fed main. For 1Ø 100–125 ampere convertible main load centers. Series S01 and S02.	PK4MB2LA	14.70	DE3A
	Secures ONE circuit breaker with or without electrical accessories to right side of interior when used as a back-fed main. For 1Ø 150–225 ampere convertible main load centers. Series S01 and S02.	PK4MB2HA	14.70	DE3A
Miscellaneous	Cover Sealing Strap: Provides means of sealing trim mounting screws on QO load center covers For use on 1Ø3W, 150 Vac maximum	QO1SE	3.60	DE3A
	Surge Arresters: For use on 3Ø4W, 650 Vac maximum QO Surgebreaker $c_{UL_{US}}$ Listed Secondary Surge Arrester 150 Vac line-to-ground maximum. Homeline Surgebreaker $c_{UL_{US}}$ Listed Secondary Surge Arrester 150 Vac line-to-ground maximum.	SDSA1175	92.00	DE1B
		SDSA3650	248.00	DE1B
		QO2175SB	159.00	DE1B
	Surge Arrester Mounting Kit: UL Listed for mounting SDSA1175 surge arrester into ground bar mounting holes on 1Ø convertible main circuit breaker load centers	HOM2175SB	159.00	DE1B
Surge Arrester Mounting Kit: UL Listed for mounting SDSA1175 surge arrester into ground bar mounting holes on 1Ø convertible main circuit breaker load centers	QOSAMK	11.40	DE3A	
Replacement Cover Directory Label: 1 through 42 numbered universal replacement directory label for load center covers	LSDL	0.54	DE5	
Circuit Identification Stickers: Circuit identification stickers for use on cover directory labels to identify branch circuits	PSDS	0.75	DE5	

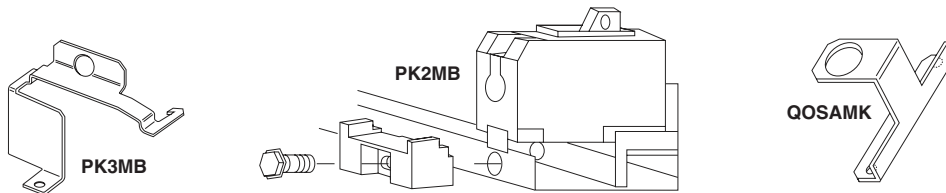


Table 1.32: QO Load Center Accessories

Description		Cat. No.	\$ Price	Schedule
Filler Plates	Fills opening in covers if twistout is removed in error	QOFF	3.60	DE3A
	Fills main circuit breaker opening in convertible load center covers 100–125 A	QOM1FP	20.30	DE3A
	Fills main circuit breaker opening in convertible load center covers 150–225 A	QOM2FP	20.30	DE3A
	Fills main circuit breaker opening in 3Ø load center covers (S01 and S02 Series)	KFP	20.30	DE3A
	Fills main circuit breaker opening in "Q" style 3Ø load center covers (S03 Series)	Q2FP	20.30	DE3A
Lock Kits	Use with QO612L100DF/S, QO612L100DFCU/SCU, QO612L100DTF/S, QO816L100DF/S, QO816L100DFCU/SCU, QO816L100DTF/S, QO48M30DSGP, or QO48M60DSGP.	PK8FL▲	98.00	DE3A
	Use with convertible mains, 1Ø and 3Ø 100–225 A, and fixed mains, 3Ø 125–225 A indoor load centers	PK6FL	93.00	DE3A
	Use with 300 and 400 ampere indoor load centers.	PK4FL	90.00	PE1A
Neutral / Ground Lugs	Field-installed for 12–2 Al or 14–4 Cu AWG wire	LK70AN	10.10	DE3A
	Field-installed for 6–2/0 Al/Cu AWG wire	LK100AN	10.80	DE3A
	Field-installed for 14–2/0 Al/Cu AWG wire	LK125AN	22.10	DE3A
	Field-installed for 2–3/0 Al/Cu AWG wire	LK150AN	32.40	DE3A
	Field-installed for 4 AWG to 300 kcmil Al/Cu wire. Use in Series S, 150–225 A QO or HOM load center	LK225AN	33.20	DE3A
Ground Bar Kits	Standard PK15GTA with a 1–4/0 Al/Cu Lug	PK15GTAL	35.00	DE3A
	Standard PK18GTA with a 1–4/0 Al/Cu Lug	PK18GTAL	37.80	DE3A
	Standard PK23GTA with a 1–4/0 Al/Cu Lug	PK23GTAL	40.70	DE3A
	Insulator Kit for PK7GTA through PK27GTA	PKGTAB	43.80	DE3A
Handle Padlock Attachment:	For padlocking main circuit breakers in convertible load centers OFF.....50–125 A, QOM1 Frame Size	QOM1PA	11.00	DE2E
	For padlocking main circuit breakers in convertible load centers OFF.....100–225 A, QOM2 Frame Size	QOM2PA	11.00	DE2E

▲ QO403L60NF/S does not have provisions for a field-installed lock.

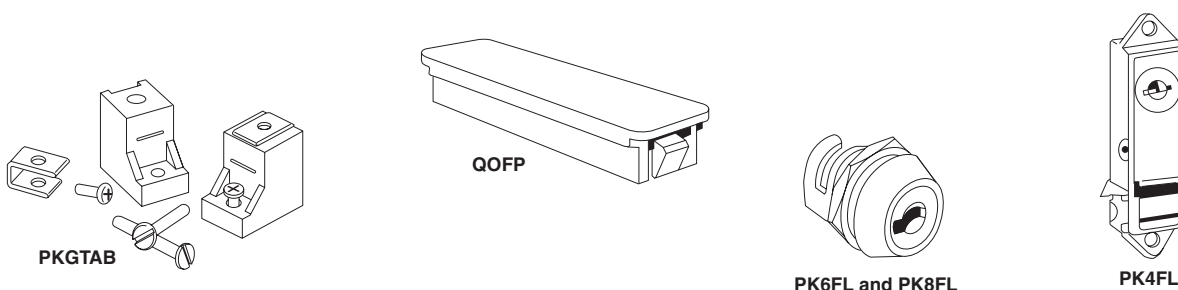


Table 1.33: Homeline Load Center Accessories

Description		Cat. No.	\$ Price	Schedule	
Handle Padlock Attachment:	For padlocking main circuit breakers in convertible load center, "OFF"	50–125 A	QOM1PA	11.00	DE2E
		100–225 A	QOM2PA	11.00	DE2E
Filler Plates	Fills opening in covers if twistout is removed in error	HOMFP	3.20	DE3C	
	Fills main circuit breaker opening in convertible load centers	100–125 A	QOM1FP	20.30	DE3A
		150–225 A	QOM2FP	20.30	DE3A
Neutral Lugs	Field-installed for 14–2 AWG Al or 14–4 AWG Cu wire	LK70AN	10.10	DE3B	
	Field-installed for 6–2/0 AWG Al/Cu wire	LK100AN	10.80	DE3B	
	Field-installed for 14–2/0 AWG Al/Cu wire	LK125AN	22.10	DE3B	
	Field-installed for 4 AWG–300 kcmil Al/Cu wire. Use in Series S, 150–225 A QO or HOM load center	LK225AN	33.20	DE3A	
Miscellaneous	Retaining Kit	Secures circuit breaker to interior when used as a back-fed main. For HOM612L100F/S, RB and HOM48L125GC, GRB load centers.	HOM1RK	6.50	DE3C
		Secures ONE circuit breaker right side of interior when used as a back-fed main. For 100–125 A convertible main load centers, Series S01 and S02	HOM4RK2LA	14.70	DE3C
		Secures ONE circuit breaker right side of interior when used as a back-fed main. For 150–225 A convertible main load centers, Series S01 and S02	HOM4RK2HA	14.70	DE3C
		Secures circuit breaker to interior when used as a back-fed main. For 2P 150–200 A circuit breakers	HOM5RK	14.70	DE3C
	Lock Kit	Use with convertible indoor load center covers (Series S-1)	PK6FL	93.00	DE3A
Replacement Cover Directory Label	1 through 42 numbered universal replacement directory label for load center covers	LSDL	0.54	DE5	
Circuit Identification Stickers:	Circuit identification stickers for use on cover directory labels to identify branch circuits	PSDS	0.75	DE5	
Generator Circuit Breaker Interlock Kit	For use on "S" Series NEMA 1 and "S1" and "S2" Series NEMA 3R load centers. Interlocks a QOM1 2P main circuit breaker of a load center (100–125 A) with a Homeline 2P (15–125 A) branch circuit breaker.	HOMCRBGK1	105.00	DE3D	
	For use on "S" Series NEMA 1 and "S1" Series NEMA 3R load centers. Interlocks a QOM2 2P main circuit breaker of a load center (150–225 A) with a Homeline 2P (15–125 A) branch circuit breaker.	HOMCGK2	105.00	DE3D	
	For use on "S2" Series NEMA 3R load centers. Interlocks a QOM2 2P main circuit breaker of a load center (150–225 A) with a Homeline 2P (15–125 A) branch circuit breaker.	HOMRBGK2	105.00	DE3D	

LOAD CENTERS
1



LOAD CENTERS



HOM 1P
1 Space Required



HOM 2P
2 Spaces Required



HOM2200BB
Branch Circuit Breaker
4 Spaces Required



HOMT Quad
Circuit Breaker
2 Spaces Required



HOM 1P AFI
(Arc Fault Circuit
Interrupter)
1 Space Required



HOM 1P GFI
(With Ground Fault
Circuit Interrupter)
1 Space Required



HOM 2P GFI
(With Ground Fault
Circuit Interrupter)
2 Spaces Required

The Square D Homeline circuit breakers are in a 1 in. wide format for 1-pole circuit breakers. They are designed to plug into Homeline load centers that are available from 4 to 42 circuits.

Table 1.34: HOM

Ampere Rating	AIR	1P—120/240 Vac		2P—120/240 Vac Common Trip	
		Cat. No.	\$ Price	Cat. No.	\$ Price
15 A	10 kA	HOM115▲	26.30	HOM215■	60.00
20 A	10 kA	HOM120▲	26.30	HOM220■	60.00
25 A	10 kA	HOM125■	26.30	HOM225■	60.00
30 A	10 kA	HOM130■	26.30	HOM230■	60.00
35 A	10 kA	—	—	HOM235■	60.00
40 A	10 kA	HOM140■	26.30	HOM240■	60.00
45 A	10 kA	—	—	HOM245■	60.00
50 A	10 kA	HOM150■	26.30	HOM250■	60.00
60 A	10 kA	—	—	HOM260■	60.00
70 A	10 kA	—	—	HOM270■	123.00
80 A	10 kA	—	—	HOM280■	168.00
90 A	10 kA	—	—	HOM290■	168.00
100 A	10 kA	—	—	HOM2100■	168.00
110 A	10 kA	—	—	HOM2110■	369.00
125 A	10 kA	—	—	HOM2125■	369.00
150 A	10 kA	—	—	HOM2150BB◆	428.00
175 A	10 kA	—	—	HOM2175BB◆	428.00
200 A	10 kA	—	—	HOM2200BB◆	428.00

Table 1.35: HOM-HM

High magnetic trip circuit breakers are recommended for applications where high initial inrush current may occur.

Amperes	1P—120/240 Vac		2Ps
	Cat. No.	\$ Price	
15 A	HOM115HM■	27.60	—
20 A	HOM120HM■	27.60	—

Table 1.36: HOM-AFI

Homeline Combination Arc Fault Circuit Interrupters—Provide overload and short circuit protection, plus arc fault protection in accordance with the NEC and UL 1699.

Circuit Breaker Type	Ampere Rating	Poles 120 Vac	Cat. No.	\$ Price
	20 A	1	HOM120CAFI■	267.00

Table 1.37: HOM-GFI

HOM-GFI circuit breakers provide overload and short circuit protection, combined with Class A ground fault protection. Class A denotes a ground fault circuit interrupter that will trip when a fault current to ground is 6 milliamperes or more.

Ampere Rating	AIR	1P—120 Vac		2P—120/240 Vac Common Trip	
		1 Space Required		2 Spaces Required	
		Cat. No.	\$ Price	Cat. No.	\$ Price
15 A	10 kA	HOM115GFI	212.00	HOM215GFI	413.00
20 A	10 kA	HOM120GFI	212.00	HOM220GFI	413.00
30 A	10 kA	—	—	HOM230GFI	413.00
40 A	10 kA	—	—	HOM240GFI	413.00
50 A	10 kA	—	—	HOM250GFI	413.00

Table 1.38: HOM-EPD—10 k AIR

Homeline Equipment Protection Device—Circuit Breakers with 30 mA Equipment Ground Fault Protection (UL Listed)

Amperes	1P—120 Vac		2P—120/240 Vac Common Trip	
	Cat. No.	\$ Price	Cat. No.	\$ Price
15 A	HOM115EPD	374.00	HOM215EPD	660.00
20 A	HOM120EPD	374.00	HOM220EPD	660.00
25 A	—	—	HOM225EPD	660.00
30 A	—	—	HOM230EPD	660.00
40 A	—	—	HOM240EPD	660.00
50 A	—	—	HOM250EPD	660.00

Table 1.39: HOMT Tandem Circuit Breakers

Ampere Rating★	AIR	1P Tandem—120/240 Vac (One Space Required)	
		Cat. No.	\$ Price
15 and 15 A	10 kA	HOMT1515■	52.00
15 and 20 A	10 kA	HOMT1520■	52.00
20 and 20 A	10 kA	HOMT2020■	52.00
30 and 15 A	10 kA	HOMT3015■	52.00
30 and 20 A	10 kA	HOMT3020■	52.00

- ▲ UL Listed as SWD (switching duty) rated. Suitable for switching 120 Vac fluorescent lighting loads.
- UL Listed as HACR type for use with air conditioning, heating and refrigeration equipment having motor group combinations and marked for use with HACR type circuit breakers.

Table 1.40: HOMT Quad Tandem Circuit Breakers

Ampere Rating★	AIR	2P Tandem—120/240 Vac (Two Spaces Required)		
		Cat. No.	\$ Price	
(2) 15 A	15 A	10 kA	HOMT1515215■	120.00
(2) 15 A	20 A	10 kA	HOMT1515220■	120.00
(2) 15 A	25 A	10 kA	HOMT1515225■	120.00
(2) 15 A	30 A	10 kA	HOMT1515230■	120.00
(2) 15 A	40 A	10 kA	HOMT1515240■	120.00
(2) 15 A	50 A	10 kA	HOMT1515250■	120.00
(2) 20 A	20 A	10 kA	HOMT2020220■	120.00
(2) 20 A	25 A	10 kA	HOMT2020225■	120.00
(2) 20 A	30 A	10 kA	HOMT2020230■	120.00
(2) 20 A	40 A	10 kA	HOMT2020240■	120.00
(2) 20 A	50 A	10 kA	HOMT2020250■	120.00

Note: Typical catalog number (e.g. HOMT 1515230) represents two 1P, outer poles (two 15 A 1P CBs) and one 2P inner circuit breaker with common trip (one 30 A 2P CB).

Table 1.41: Circuit Breaker Wire Sizes

Breaker Type	Ampere Rating	Wire Size (AWG/kcmil)	
		Aluminum	Copper
HOM 1P	15–30 A	14–8 AWG	14–8 AWG or (2) 14–10 AWG
	40–50 A	8–2 AWG	8–2 AWG
HOM 2P	15–30 A	14–8 AWG	14–8 AWG or (2) 14–10 AWG
	35–70 A	8–2 AWG	8–2 AWG
	80–125 A	4–2/0 AWG	4–2/0 AWG
	150–200 A	4 AWG–300 kcmil	4 AWG–300 kcmil
HOMT and Quad	15–30 A	14–8 AWG	14–8 AWG
	Quad Only	40–50 A	6–12 AWG
HOM-GFI - 1P	15–20 A	14–10 AWG	14–10 AWG
	15–50 A	12–4 AWG	14–6 AWG

Table 1.42: Accessories

Description	Cat. No.	\$ Price	
Handle Attachments			
Handle Tie: Converts any two adjacent 120/240 Vac single HOM circuit breakers to independent trip 2P	HOM1HT□	3.50	
Handle Tie: Converts any two adjacent 120/240 Vac 1P side-by-side HOMT circuit breakers to independent trip 2P	HOMTHT□	3.80	
Handle Clamp: Clamp for holding HOM 1P handle in the ON or OFF position	QO1LO◇	3.80	
Handle Blocking Device: Attaches to standard HOM 2P circuit breakers for holding the handle in the OFF position	HOM2HBD□	10.70	
Handle Padlock Attachment: For padlocking 1P Standard HOM breakers in the ON or OFF position.	HOM1PA□	9.90	
Handle Padlock Attachment: For padlocking 2P Standard HOM circuit breakers in ON or OFF position	15–70 A	HOM2PALA□	9.90
	80–125 A	HOM2PAHA□	9.90
150–200 A	HOM2PAVHA□	50.00	
Handle Padlock Attachment: For padlocking center poles of Homeline Quad breakers in the OFF position.	HOMQPA	9.90	
Handle Padlock Attachment: For padlocking main circuit breakers in convertible load center in OFF position	50–125 A	QOM1PA△◇	11.00
	100–225 A	QOM2PA△◇	11.00
Sub-Feed Lugs			
125 A 2P plug-on—2 spaces required	HOML2125	47.60	
225 A 2P plug-on—4 spaces required	HOML2225◆	296.00	

- ◆ Requires four spaces (1 AWG–300 kcmil Al/Cu). Use only in 10 panel rated 150 A or greater.
- ★ 15–20 A tandem or quad tandem circuit breakers are suitable for use with 60°C or 75°C conductors. 25–50 A tandem or quad tandem circuit breakers are suitable for use with 75°C conductors only.
- ▼ 15–30 A circuit breakers are suitable for use with 60°C or 75°C conductors. 40–125 A circuit breakers are suitable for use with 75°C conductors.
- △ 50–125 A QOM1 frame size; 100–225 A QOM2 frame size.
- DE3C Discount Schedule
- ◇ DE2E Discount Schedule

Table 1.43: 1Ø3W—120/240 Vac—UL Listed—10 kA Short Circuit Current Rating

Mains Rating	Spaces	Max. Single Pole Circuits ▲	Max. Tandem Circuit Breakers	Load Center Box, Interior and Cover ■		Main Wire Size AWG/kcmil		Equipment Ground Bar Kit (Order Separately)		Box No. See Page 1-17			
				Cat. No.	\$ Price (DE3C)	Al	Cu	Cat. No.	\$ Price (DE3A)				
Main Lugs—Order HOM, HOMT, HOMGFI and HOMAFI Circuit Breakers from page 1-14													
Factory-installed Fixed Main Lugs													
70 A	2	4	2	HOM24L70F/S★◆	59.00	12-3	14-4	PK3GTA1	11.40	2			
100 A	6	12	6	HOM612L100F/S◆▼	78.00	8-1		PK7GTA	11.70	4			
125 A	4	8	4	HOM48L125GC	86.00	12-2/0	14-2/0	PK7GTA Factory-included		21			
Convertible Mains—Factory-installed Main Lugs													
QOM1 Main Frame Size—Convertible to 22 k AIR Main Circuit Breaker (See page 1-16)													
125 A	8	16	8	HOM816L125C	132.00	6-2/0		PK15GTA	17.10	6			
	8	16	8	HOM816L125TC	150.00			Factory-installed	—	6			
	12	12	0	HOM12L125C	174.00			PK15GTA	17.10	6			
	12	24	12	HOM1224L125TC	204.00			Factory-installed	—	6			
	16	24	8	HOM1624L125C	260.00			PK15GTA	17.10	8			
	20	20	0	HOM20L125C	237.00			PK15GTA	17.10	8			
	20	24	4	HOM2024L125TC	288.00			Factory-installed	—	8			
24	24	0	HOM24L125TC	344.00	Factory-installed	—	8						
Convertible Mains—Factory-installed Main Lugs													
QOM2 Main Frame Size—Convertible to 22 k AIR Main Circuit Breaker (See page 1-16)													
150 A	30	30	0	HOM30L150C	375.00	4-250		PK23GTA	21.30	10			
	30	30	0	HOM30L150TC	396.00	4-250		Factory-installed	—	10			
200 A	16	32	16	HOM1632L200TC	357.00	4-250		Factory-installed	—	9			
	16	32	16	HOM1632L200TCFT△	575.00								
	20	40	20	HOM2040L200TC	417.00								
200 A	30	30	0	HOM30L200C	420.00	4-250		PK23GTA	21.30	10			
	30	30	0	HOM30L200TC	464.00			Factory-installed	—	10			
	30	40	10	HOM3040L200TC	479.00			Factory-installed	—	10			
	40	40	0	HOM40L200C	618.00			PK23GTA	21.30	12			
	40	40	0	HOM40L200TC	671.00			Factory-installed	—	12			
	40	60	20	HOM4060L200TC	839.00			Factory-installed	—	12			
	42	52	10	HOM4252L200TC	804.00			Factory-installed	—	12			
225 A	42	42	0	HOM42L225C	732.00	6-250		PK23GTA	21.30	12			
Main Circuit Breaker—22 kA Short Circuit Current Rating													
Convertible Mains—Factory-installed Main Circuit Breaker													
QOM1 Main Frame Size—Convertible to Main Lugs or Lower Amperage Main Circuit Breaker (See page 1-16)													
100 A	8	16	8	HOM816M100C	315.00	6-1		PK15GTA	17.10	5			
	8	16	8	HOM816M100TC	333.00	6-1		Factory-installed	—	5			
	12	12	0	HOM12M100C	294.00	6-2/0		PK15GTA	17.10	6			
	12	24	12	HOM1224M100TC	384.00	6-2/0		Factory-installed	—	6			
	20	20	0	HOM20M100C	396.00	6-1		PK15GTA	17.10	7			
	24	24	0	HOM24M100C	513.00	6-2/0		PK15GTA	17.10	8			
125 A	30	30	0	HOM30M100C	672.00	6-2/0		PK23GTA	21.30	10			
	12	24	12	HOM1224M125C	606.00	6-2/0		PK15GTA	17.10	6			
	12	24	12	HOM1224M125TC	620.00			Factory-installed	—	6			
	24	24	0	HOM24M125C	710.00			PK15GTA	17.10	8			
	30	30	0	HOM30M125C	812.00			PK23GTA	21.30	10			
	Convertible Mains—Factory-installed Main Circuit Breaker												
	QOM2 Main Frame Size—Convertible to Main Lugs or Lower Amperage Main Circuit Breaker (See page 1-16)												
150 A	16	32	16	HOM1632M150TC	636.00			4-250		Factory-installed	—	9	
	20	30	10	HOM2030M150TC	750.00	Factory-installed	—			9			
	30	30	0	HOM30M150C	776.00	PK23GTA	21.30			10			
200 A	12	24	12	HOM1224M200TC	572.00	4-250		Factory-installed	—	9			
	16	32	16	HOM1632M200TC	675.00			Factory-installed	—	9			
	20	40	20	HOM2040M200C	711.00			PK23GTA	21.30	9			
	20	40	20	HOM2040M200TC	764.00			Factory-installed	—	9			
	30	30	0	HOM30M200C	798.00			PK23GTA	21.30	10			
	30	40	10	HOM3040M200TC	891.00			Factory-installed	—	10			
	40	40	0	HOM40M200C	1019.00			PK23GTA	21.30	12			
	40	60	20	HOM4060M200C	1367.00			PK23GTA	21.30	12			
	42	42	0	HOM42M200C	1094.00			PK23GTA	21.30	12			
42	52	10	HOM4252M200C	1313.00	PK23GTA	21.30	12						
225 A	42	42	0	HOM42M225C	1116.00	4-250		PK23GTA	21.30	12			
Universal Mains—No Factory-installed Main Circuit Breaker or Main Lugs													
QOM2 Main Frame Size—Field-install 22 k AIR Main Circuit Breaker or Main Lugs (See page 1-16)													
200 A	16	32	16	HOM1632U200TC	293.00	4-250		Factory-installed	—	9			
	20	40	20	HOM2040U200TC	357.00			Factory-installed	—	9			
	30	40	10	HOM3040U200TC	530.00			Factory-installed	—	10			

Above listings through 200 A mains rating meet Federal Specification W-P-115c as Type 1, Class 2.

- ▲ Maximum single pole branch circuits utilizing HOM and/or HOMT circuit breakers.
- C at end of catalog number indicates combination flush/surface cover included with device.
- ◆ F/S at end of catalog number indicates to order F for flush device or S for surface device. The cover does not have a door.
- ★ HOM-GFI and HOM-AFI branch circuit breakers are limited to number 10 maximum wire.
- ▼ 70 A maximum branch circuit breaker, 100 A maximum back feed main circuit breaker.
- △ Supplied with feed-thru lugs.

Table 1.44: 1Ø3W 120/240 Vac UL Listed Load Centers

Mains Rating	Spaces	Max. Single Pole Circuits ▲	Max. Tandem Circuit Breakers	Load Center Box, Interior and Cover		Main Wire Size AWG/kcmil		Equipment Ground Bar Kit (Order Separately)		Box No. See Page 1-17
				Cat. No. (DE3C)	\$ Price	Al	Cu	Cat. No. (DE3A)	\$ Price	
Main Lugs (Order HOM, HOMT, HOMGFI and HOMAFI Circuit Breakers from Page 1-15), 10 kA Short Circuit Current Rating										
Factory-installed Fixed Main Lugs, 10 kA Short Circuit Current Rating										
70 A	2	4	2	HOM24L70RB■	111.00	12-3	14-4	PK4GTA	10.80	1R
100 A	6	12	6	HOM612L100RB△	129.00	8-1		PK7GTA	11.70	2R
125 A	4	8	4	HOM48L125GRB	137.00	12-2/0	14-2/0	PK7GTA Factory-included		15R
Convertible Mains with Factory-installed Main Lugs ♦, QOM1 Main Frame Size—Convertible to 22 k AIR Main Circuit Breaker (See Below)										
125 A	8	16	8	HOM816L125RB	248.00	6-2/0		PK15GTA	17.10	3R
	12	12	0	HOM12L125RB	234.00			PK15GTA	17.10	3R
	12	24	12	HOM1224L125RB	278.00			PK15GTA	17.10	3R
	20	20	0	HOM20L125RB	383.00			PK15GTA	17.10	4R
Convertible Mains with Factory-installed Main Lugs ♦, QOM2 Main Frame Size—Convertible to 22 k AIR Main Circuit Breaker (See Below)										
200 A	12	12	0	HOM12L200RB	423.00	4-250		PK23GTA	21.30	5R
	20	40	20	HOM2040L200RB	560.00			PK23GTA	21.30	6R
	30	30	0	HOM30L200RB	587.00			PK23GTA	21.30	7R
	30	40	10	HOM3040L200RB	759.00			—	—	—
	40	40	0	HOM40L200RB	911.00			PK23GTA	21.30	14R
	40	60	20	HOM4060L200RB	1139.00			PK23GTA	21.30	14R
	42	52	10	HOM4252L200RB	1092.00			PK23GTA	21.30	14R

Main Circuit Breaker (Order HOM, HOMT, HOMGFI and HOMAFI Circuit Breakers from Page 1-15), 22 kA Short Circuit Current Rating

Convertible Mains with Factory-installed Main Circuit Breaker, QOM1 Main Frame Size—Convertible to Main Lugs or Lower Amperage Main Circuit Breaker (See Below) *										
100 A	8	16	8	HOM816M100RB	429.00	6-1		PK15GTA	17.10	3R
	12	12	0	HOM12M100RB	416.00	6-2/0		PK15GTA	17.10	3R
	20	20	0	HOM20M100RB	531.00			PK15GTA	17.10	4R
	24	24	0	HOM24M100RB	606.00			PK15GTA	17.10	6R
125 A	8	16	8	HOM816M125RB	716.00	6-2/0		PK15GTA	17.10	3R
	24	24	0	HOM24M125RB	858.00			PK15GTA	17.10	6R
Convertible Mains with Factory-installed Main Circuit Breaker, QOM2 Main Frame Size—Convertible to Main Lugs or Lower Amperage Main Circuit Breaker (See Below)										
200 A	30	30	0	HOM30M150RB	978.00	4-250		PK23GTA	21.30	7R
	20	40	20	HOM2040M200RB	872.00			PK23GTA	21.30	6R
	30	30	0	HOM30M200RB	1004.00			PK23GTA	21.30	7R
	30	40	10	HOM3040M200RB	1152.00			PK23GTA	21.30	7R
	40	40	0	HOM40M200RB	1277.00			PK23GTA	21.30	14R
	40	60	20	HOM4060M200RB	1596.00			PK23GTA	14.20	14R
225 A	42	52	10	HOM4252M200RB	1532.00	4-250		PK23GTA	14.20	14R
	16	24	8	HOM1624M225RB	1182.00			PK15GTA	17.10	7R
42	42	0	HOM42M225RB	1323.00	PK23GTA	21.30	14R			
Convertible Mains with Factory-installed Main Circuit Breaker with Feed-thru Lugs ♦										
150 A	8	16	8	HOM816M150FTRB	785.00	4-250		PK15GTAL	35.00	6R
200 A ▽	8	16	8	HOM816M200FTRB	785.00	4-250		PK15GTAL	35.00	6R
Universal Main with Feed-thru Lugs—No Factory-installed Main Circuit Breaker or Main Lugs ♦										
QOM2 Main Frame Size—Field-install 22 k AIR Main Circuit Breaker or Main Lugs (See Kits Below)										
200 A	8	16	8	HOM816U200FTRB	446.00	4-250		PK15GTAL	35.00	6R

Above listings through 200 A mains rating meet Federal Specification W-P-115c as Type 1, Class 2.

- ▲ Maximum single pole branch circuits utilizing HOM and/or HOMT circuit breakers.
- HOM-GFI and HOM-AFI branch circuit breakers are limited to number 10 maximum wire.
- ♦ Side hinge door device allow 1-1/4 in. on left side for door to open.
- ★ 22 k AIR main circuit breaker UL Listed for use ahead of HOM and HOMT 10 k AIR branch circuit breakers to permit their application on systems with up to 22 kA available fault current.
- ▽ Rated 200 A when using copper wire. Reference NEC® Table 310.15(B)(6) when using Al wire.
- △ 70 A maximum branch circuit breaker, 100 A maximum back feed main circuit breaker.

Field-Installed Kits

Table 1.45: Field-Installed Mains, Convertible Load Centers Only

Field-Installed Main Type	Frame Size	Main □ Ampere Rating	Use on Convertible Load Center with Mains Rating	Cat. No.	\$ Price (DE3A)	Lug Wire Size ▽ AWG/kcmil
Main Lug ◇	—	125 A	100-125 A	QOL125	44.10	6-2/0 Al or Cu
		225 A	150-225 A	QOL225	104.00	6-300 Al or Cu
Main Circuit Breaker ★	QOM1	50 A	100-125 A	QOM50VH	140.00	12-2/0 Al or Cu
		60 A	100-125 A	QOM60VH	140.00	
		70 A	100-125 A	QOM70VH	140.00	
		80 A	100-125 A	QOM80VH	201.00	
		90 A	100-125 A	QOM90VH	201.00	
		100 A	100-125 A	QOM100VH	201.00	
		110 A	125 A	QOM110VH	468.00	
	125 A	125 A	QOM125VH	468.00		
	QOM2⊕	100 A	150-225 A	QOM2100VH	468.00	4-300 Al or Cu
		125 A	150-225 A	QOM2125VH	468.00	
		150 A	150-225 A	QOM2150VH	468.00	
		175 A	200-225 A	QOM2175VH	468.00	
		200 A	200-225 A	QOM2200VH	468.00	
		225 A	225 A	QOM2225VH	468.00	

- Do not exceed the load center mains rating.
- ◇ If main circuit breaker knockout has been removed from the load center's trim, order appropriate filler plate from page 1-13.
- ★ 22 k AIR main circuit breaker UL Listed for use ahead of HOM and HOMT 10 k AIR branch circuit breakers to permit their application on systems with up to 22 kA available fault current.
- ▽ Wire range listed for main device kits is the wire range of that device. To find out maximum wire size permitted in a particular load center per UL, see pages 1-5 through 1-11 under Main Wire Size.
- ⊕ Add suffix 1021 for 120, 208, 240 Vac shunt trip. Add \$126.00.

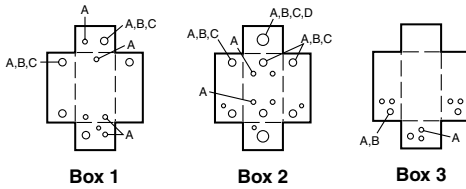
Indoor Knockout Information and Enclosure Dimensions

Table 1.46: Enclosure Dimensions

Box No.	Dimensions						Box No.	Dimensions					
	W		H		D			W		H		D	
	in.	mm	in.	mm	in.	mm		in.	mm	in.	mm	in.	mm
1	3.81	97	6.72	171	3.00	76	13	5.88	149	13.12	333	3.38	86
2	4.81	122	9.30	236	3.19	81	14	14.25	362	20.92	531	3.75	95
3	4.81	122	9.30	236	3.19	81	15	20.00	508	50.00	1270	5.75	146
4	8.88	226	12.57	319	3.80	97	16	20.00	508	62.00	1727	5.75	146
5	14.25	362	14.92	379	3.75	95	17	20.00	508	53.00	1346	5.75	146
6	14.25	362	17.92	455	3.75	95	18	5.88	149	16.12	409	3.38	86
7	14.25	362	20.92	531	3.75	95	19	7.56	192	23.12	587	4.25	108
8	14.25	362	26.04	661	3.75	95	20	9.62	244	26.12	663	4.75	121
9	14.25	362	29.86	758	3.75	95	21	8.88	226	14.80	376	3.80	97
10	14.25	362	33.78	858	3.75	95	22	8.55	217	23.92	608	3.95	100
11	14.25	362	37.98	965	3.75	95	23	14.25	362	29.86	758	3.75	95
12	14.25	362	39.37	1000	3.75	95							

Table 1.47: Knockout Information

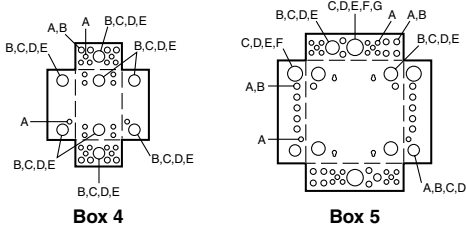
Symbol	Knockouts								
	A	B	C	D	E	F	G	H	I
Conduit Size	1/2	3/4	1	1-1/4	1-1/2	2	2-1/2	3	3-1/2



Box 1

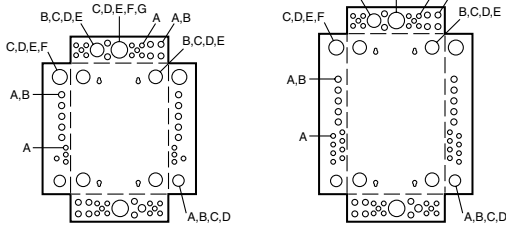
Box 2

Box 3



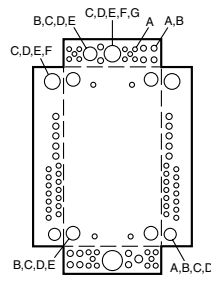
Box 4

Box 5

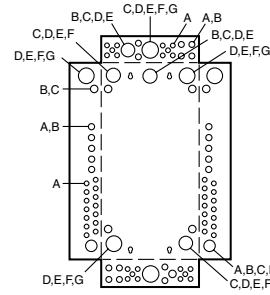


Box 6

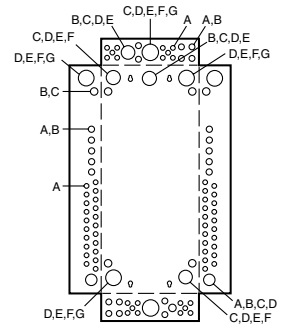
Box 7



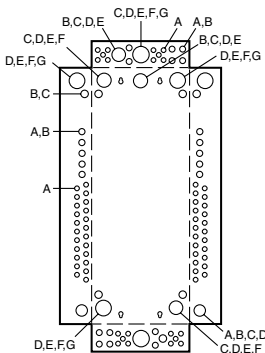
Box 8



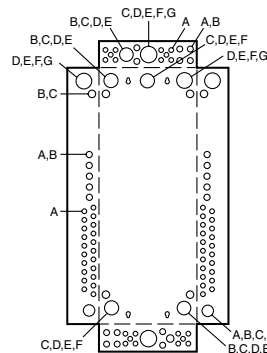
Box 9



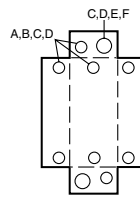
Box 10



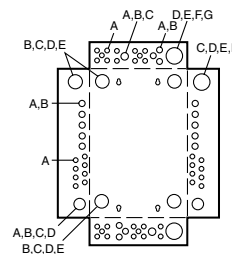
Box 11



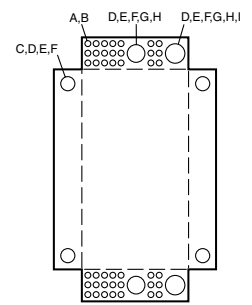
Box 12



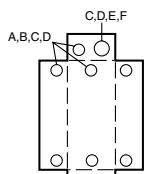
Box 13



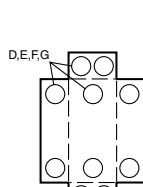
Box 14



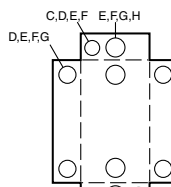
Box 15, 16, 17



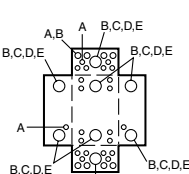
Box 18



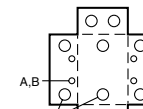
Box 19



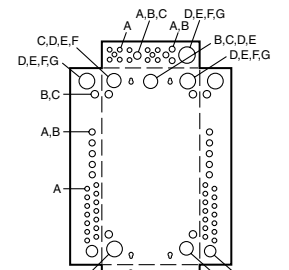
Box 20



Box 21



Box 22



Box 23

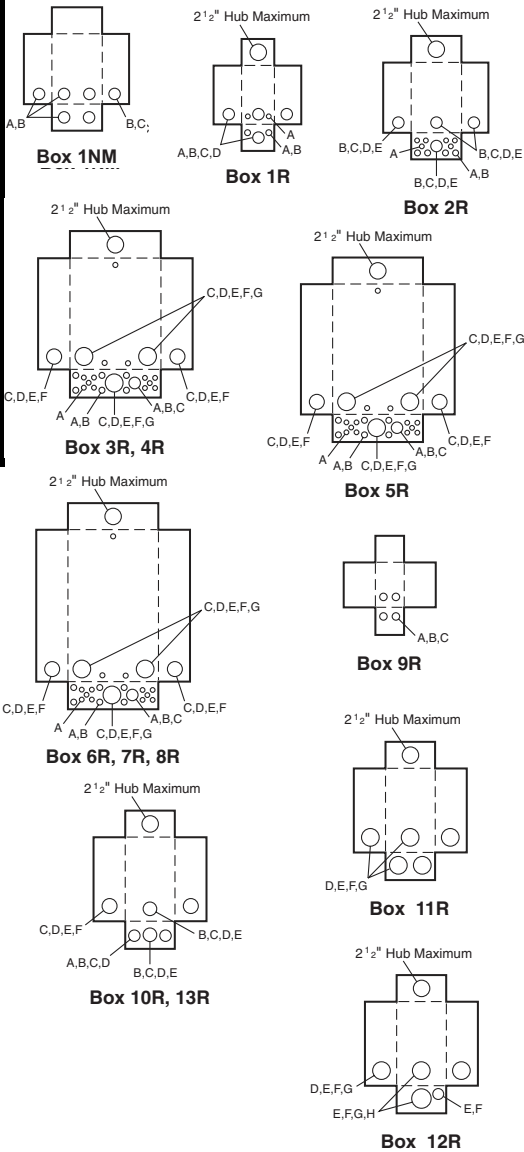


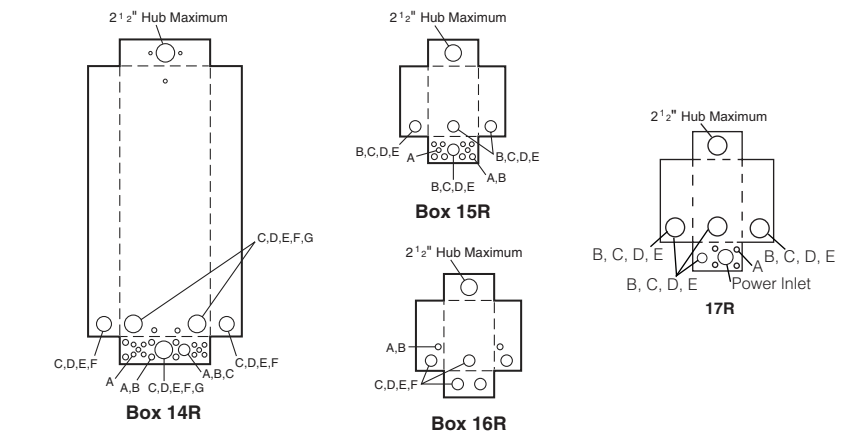
Table 1.48: Enclosure Dimensions

Box No.	Dimensions					
	W		H		D	
	in.	mm	in.	mm	in.	mm
1NM	6.52	166	8.79	223	3.90	99
1R▲	4.88	124	9.38	238	4.00	102
2R	8.88	226	12.65	321	4.27	108
3R	14.75	375	18.92	481	4.52	115
4R	14.75	375	22.06	560	4.52	115
5R	14.75	375	26.04	661	4.52	115
6R	14.75	375	29.86	758	4.52	115
7R	14.75	375	33.78	858	4.52	115
8R	14.75	375	37.98	965	4.52	115
9R	4.56	116	6.50	165	3.88	99
10R	6.92	176	13.18	335	4.12	105
11R	7.56	192	23.24	590	4.75	121
12R	9.62	244	26.24	666	5.50	140
13R	6.92	176	16.18	411	4.12	105
14R	14.75	375	39.37	1000	4.52	115
15R	8.88	226	14.80	376	4.27	108
16R	8.55	217	24.75	629	4.16	106
17R	8.88	226	12.65	321	4.27	108

▲ HOME250SPA and QO260NATR top endwall has no hub opening.

Table 1.49: Knockout Information

Symbol	Knockouts							
	A	B	C	D	E	F	G	H
Conduit Size	1/2 in.	3/4 in.	1 in.	1-1/4 in.	1-1/2 in.	2 in.	2-1/2 in.	3 in.



"RB" Hub

Bolt-On Hubs

Square D equipment with "R" or "RB" suffix, designated NEMA 3R rainproof construction, utilizes bolt-on hubs listed below. "RB" devices will accept 3/4 in. through 2-1/2 in. bolt-on hubs without the use of reducers. Off-center conduit thread openings and elongated mounting holes provide quick and easy adjustment to eliminate costly conduit offsets and bends. Catalog suffix "R" devices require 3 in. through 4 in. field cut opening. Hubs are suitable for use with conduit having ANSI standard taper pipe thread.

Table 1.50: Bolt-On Hubs UL Listed for "RB" Devices

Conduit Size	3/4 in.	1 in.	1-1/4 in.	1-1/2 in.	2 in.	2-1/2 in.
Hub Cat. No.	B075	B100	B125	B150	B200	B250
\$ Price	33.30	33.30	33.30	33.30	61.35	102.00

■ Closing cap (Cat. No. BCAP) is provided factory-installed on each device having "RB" suffix. Price if ordered separately; \$2.50

Table 1.51: Bolt-On Hubs UL Listed for Mounting in Field-Cut Opening

Conduit Size	3 in.	3-1/2 in.	4 in.	Designed for mounting in field cut opening. Includes gasket and four mounting bolts and nuts.
Hub Cat. No.	B300	B350	B400	
\$ Price	186.00	300.00	368.00	

Table 1.52: Meter Mains *New!*

Meets Federal Spec. W-P-115c as Type 1, Class 2, UL Listed, suitable only for use as service equipment, 120/240 Vac, 1Ø3W, NEMA 3R enclosure

Amperage Rating	Bypass Type	Service (Type of Feed)		Short Circuit Current Rating	Cat. No.	\$ Price	Service Disconnect(s)			Load Center and Branch Circuit Breakers (Order separately Pages 1-2, 1-3, 1-4)				Hub Type (Order separately from page 1-17)	Line Side Main Lugs AWG/kcmil (Al/Cu)	Service Ground Lug AWG/kcmil (Al/Cu)	Weight Each (Lbs) and Pallet Qty.
		UL	UL and EUSERC				2P Circuits (Max.)	Type (Order separately from page 1-22 except as noted)	Ampere Rating (Max.)	Max. Quantity		Ampere Rating (Max.)					
										Circuits	Tandems						
Surface Mount Only																	
125 A	None	OH/UG	—	10 kA	C125RB	368.00	1	QOM1-VH	125 A	—	—	—	—	B	4-1/0	8-1/0	15, 54
200 A		OH/UG	—	22 kA	CM200S	1022.00	1	QOM2-VH	200 A	—	—	—	—	A	4-250	(2) 8-2/0	26, 24
200 A		OH/UG	—	10 kA	C4L200S	1143.00	2	QO	100 A	—	—	—	—	A	4-250	(2) 8-2/0	27, 28
Surface Mount Only																	
125 A	None	OH/UG	OH/UG	10 kA	SC8L125S	846.00	4	HOM	125 A	—	—	—	—	A	6-2/0	6-2/0	31, 24
200 A	None	OH/UG	OH/UG	10 kA	SC12L200S	1419.00	6	HOM	200 A	—	—	—	—	A-L	4-250	12-2/0	47, 10
Semiflush Mount only																	
125 A	None	OH/UG	OH/UG	10 kA	SC8L125F	846.00	4	HOM	110 A	—	—	—	—	A or B300	6-2/0	6-2/0	37, 20
200 A	None	OH*/UG	OH*/UG	10 kA	SC12L200F	1419.00	6	HOM	200 A	—	—	—	—	A-L	4-250	12-2/0	47, 10
200 A	None	OH*/UG	OH*/UG	22 kA	SC816F200F	1187.00	1	QOM2200VH▲	200 A	8	16	8	200 A	A-L	4-250	12-2/0	51, 10
Surface Mount—Supplied with Feed-Thru Lugs and provisions for Branch Circuit Breakers																	
150 A	None	OH/UG	—	22 kA	SC816F150S	1187.00	1	QOM2150VH▲	150 A	8	16	8	150 A	A-L	4-250	12-2/0	40, 10
150 A		OH/UG	—	10 kA	SC816D150C	1250.00	1	HOM2150▲	150 A	8	16	8	100 A*	A or A-L	6-300	12-1/0	48, 18
150 A		UG	—	10 kA	SU816D150C	1250.00	1	HOM	150 A	8	16	8	100 A*	A-L	4-250	12-2/0	40, 10
200 A	None	OH/UG	—	22 kA	SC816F200S	1187.00	1	QOM2200VH▲	200 A	8	16	8	200 A	A-L	4-250	12-2/0	40, 10
200 A		OH/UG	—	10 kA	SC816D200C	1250.00	1	HOM2200▲	200 A	8	16	8	100 A*	A or A-L	6-300	12-1/0	48, 18
200 A		UG	—	10 kA	SU816D200C	1250.00	1	HOM	200 A	8	16	8	100 A*	A-L	4-250	12-2/0	40, 10
Surface Mount Only																	
200 A	None	OH/UG	—	22 kA	RC200S★	1022.00	1	QOM2-VH	200 A	—	—	—	—	A	6-350	(2)8-2/0	26, 24
	Lever			10 kA	RCM200SL	1950.00	1	QOM2-VH	200 A					A	6-350	14-1/0 Cu 12-1/0 Al	60 / 14
	None			22 kA	RC2M200S★	1083.00	1	QOM2-VH	200 A					A	6-350	(2)8-2/0	27, 20
	Horn			22 kA	RC2M200SH★	1136.00	1	QOM2-VH	200 A					A	6-350	(2)8-2/0	27, 20
	Lever			10 kA	RC2M200SL	2090.00	1	QOM2-VH	200 A					A	6-350	14-1/0 Cu 12-1/0 Al	60 / 14
	None			22 kA	QC12L200C	1562.00	6	QO-VH	200 A					A	6-350	12-2/0	40, 21
200 A	Horn	22 kA	QC12L200CH	1883.00	6	QO-VH	200 A	A	6-350	12-2/0	40, 21						
Surface Mount Only, Supplied with Feed-Thru Lugs and provisions for Branch Circuit Breakers																	
100 A	Horn	OH/UG	—	22 kA	QC816F100CH	1356.00	1	QOM2100VH▲	100 A	8	16	8	100	A	6-350	14-2/0 Cu 12-2/0 Al	74 / 12
125 A	None	OH/UG	—	22 kA	QC816F125C	1304.00	1	QOM2125VH▲	125 A	8	16	8	100				
125 A	Horn	OH/UG	—	22 kA	QC816F125CH	1356.00	1	QOM2125VH▲	125 A	8	16	8	100				
150 A	None	OH/UG	—	22 kA	QC816F150C	1304.00	1	QOM2150VH▲	150 A	8	16	8	150 A				
150 A	Horn	OH/UG	—	22 kA	QC816F150CH	1356.00	1	QOM2150VH▲	150 A	8	16	8	150 A				
150 A	Lever	OH/UG	—	22 kA	QC816F150SL	2690.00	1	QOM2150-VH▲	200 A	8	16	8	150 A				
200 A	None	OH/UG	—	22 kA	QC816F200C	1356.00	1	QOM2200VH▲	200 A	8	16	8	200 A	A	6-350	14-2/0 Cu 12-2/0 Al	74 / 12
200 A	Horn	OH/UG	—	22 kA	QC816F200CH	1356.00	1	QOM2200VH▲	200 A	8	16	8	200 A				
200 A	Lever	OH/UG	—	22 kA	QC816F200SL	2690.00	1	QOM2200-VH▲	200 A	8	16	8	200 A				
Surface Mount Only																	
125 A	None	OH/UG	—	10 kA	RC8L125S	846.00	4	HOM	125 A	—	—	—	—	A	6-2/0	6-2/0	27, 32
200 A	None	OH/UG	—	10 kA	RC12L200C	1419.00	6	HOM	200 A	—	—	—	—	A	6-350	12-2/0	40, 21
200 A	Horn	OH/UG	—	10 kA	RC12L200CH	1419.00	6	HOM	200 A	—	—	—	—	A	6-350	12-2/0	40, 21
Surface Mount Only, Supplied with Feed-Thru Lugs and provisions for Branch Circuit Breakers																	
100 A	Horn	OH/UG	—	22 kA	RC816F100CH	1227.00	1	QOM2100VH▲	100 A	8	16	8	100 A	A	6-350	14-2/0 Cu 12-2/0 Al	72 / 12
125 A	Horn	OH/UG	—	22 kA	RC816F125CH	1227.00	1	QOM2125VH▲	125 A	8	16	8	100 A				
150 A	None	OH/UG	—	22 kA	RC816F150C	1187.00	1	QOM2150VH▲	150 A	8	16	8	150 A				
150 A	Horn	OH/UG	—	22 kA	RC816F150CH	1227.00	1	QOM2150VH▲	150 A	8	16	8	150 A				
150 A	Lever	OH/UG	—	22 kA	RC816F150SL	2690.00	1	QOM2150-VH▲	200 A	8	16	8	150 A				
200 A	None	OH/UG	—	22 kA	RC816F200C	1227.00	1	QOM2200VH▲	200 A	8	16	8	200 A				
200 A	Horn	OH/UG	—	22 kA	RC816F200CH	1227.00	1	QOM2200VH▲	200 A	8	16	8	200 A				
200 A	Lever	OH/UG	—	22 kA	RC816F200SL	2690.00	1	QOM2200-VH▲	200 A	8	16	8	200 A				
200 A	Horn	OH/UG	—	10 kA	RC816D200CH	1292.00	1	HOM2200▲	200 A	8	16	8	100 A*	A or B300	6-300	6-1/0	48, 18

- ▲ Service disconnect supplied factory-installed.
- 125 A Homeline® 2P circuit breaker can be installed in top position only. All other positions are limited to 100 A max.
- ◆ UL short circuit current rating is equal to the lowest interrupting rating of any circuit breaker installed.
- ★ Suitable for OH service with addition of tunnel kit SCTK20. Order separately.
- ▼ Supplied with load side feed-thru lugs, for 6 AWG-250 kcmil (Al/Cu) conductors.
- △ Convertible to semiflush with SC200F flange kit (order separately).
- Device supplied with barrel lock provisions factory-installed.
- ◇ Supplied with horn bypass and 5th jaw factory-installed.
- ☆ 5th jaw factory-installed.
- ▽ Use only 15-100 A and 150-200 A circuit breakers.
- Use only 15-100 A and 150 A circuit breakers.
- * A 100 A circuit breaker can be installed in bottom position only, all other positions are limited to 70 A.
- ◇ Use only 15-110 A and 150-200 A breakers.
- Use only 15-110 A and 150 A breakers.
- Knockout provided in cover for use with barrel lock kit SCBRLOCK (see Accessories, page 1-22).

LOAD CENTERS

1

Meter Mains and All-In-Ones

- Ring or ringless type meter socket designs available
- UL Listed, suitable only for use as service equipment
- Meets EUSERC standards

- Service disconnect(s) are supplied factory-installed, except where noted
- Semiflush-reverse design available, supplied with load center (indoor access)
- Supplied with 100% branch neutrals, all unused terminals may be used for equipment grounding wires.
- Meets Federal Specification W-P-115c as Type 1, Class 2

Table 1.53: All-In-One Combination Service Entrance Devices *New!*

Ampere Rating	Bypass Type	Service (Type of Feed) UL and EUSERC	Short Circuit Current Rating	Cat. No. (DE3A)	List \$ Price	Service Disconnect(s)			Load Center and Branch Circuit Breakers (Order Separately Pages 1-2, 1-3, 1-14)				Hub Type (Order Separately page 1-22)	Line Side Main Lugs AWG/kcmil (Al/Cu)	Service Ground Lug AWG/kcmil (Al/Cu)	Weight Each (Lbs) and Pallet Qty.
						2P Circuits (Max.)	Type (Order separately from page 1-22 except as noted)	Ampere Rating (Max.)	Max. Quantity			Ampere Rating (Max.)				
									Spaces	Circuits	Tandems					
Surface Mount Only																
100 A	None	OH/UG	10 kA	SC1624M100S	744.00	1	HOM2100	100 A	16	24	8	100 A	A	6-2/0	6-2/0	32, 24
125 A	None	OH/UG	10 kA	SC1624M125S	1518.00	1	HOM2125	125 A	16	24	8	125 A▲	A	6-2/0	6-2/0	32, 24
200 A	None	OH/UG	22 kA	SC2040M200S	1671.00	1	QOM2200VH	200 A	20	40	20	200 A●	A-L	4-250	6-2/0	45, 10
200 A	None	OH/UG△	10 kA	SC2040M200C■	1799.00	1	HOM2200	200 A	20	40	20	100 A	A or A-L	6-300	12-1/0	47, 18
200 A	None	UG	10 kA	SU2040M200C■	1799.00	1	HOM2200	200 A	20	40	20	100 A	A or A-L	6-300	12-1/0	47, 18
Semiflush Mount Only																
100 A	None	OH/UG	10 kA	SC1624M100F	744.00	1	HOM2100	100 A	16	24	8	100 A	A or B300	6-2/0	6-2/0	44, 20
125 A	None	OH/UG	10 kA	SC1624M125F	1518.00	1	HOM2125	125 A	16	24	8	110 A	A-L	4-250	12-2/0	51, 10
		OH◆/UG	22 kA	SC2040M125F	1671.00	1	QOM2125VH	125 A	20	40	20	110 A				
200 A	None	OH◆/UG	22 kA	SC2040M200F	1671.00	1	QOM2200VH	200 A	20	40	20	200 A●	A-L	4-250	12-2/0	56, 10
		OH▼/UG	22 kA	SC2636M200FPV★	2244.00	1	QOM2200VH	200 A	26	36	10	100 A				
			22 kA	SC3040M200F	2064.00	1	QOM2200VH	200 A	30	40	10	200 A				
225 A	None	OH▼/UG	22 kA	SC3040M225F	2280.00	1	QOM2225VH	225 A	30	40	10	200 A	A-L	4-250	12-2/0	56, 10
				SC2636M225FPV★	2520.00	1	QOM2225VH	225 A	26	36	10	100 A				
Surface Mount Only																
100 A	None	OH△	10 kA	SO1020M100S	443.00	1	HOM2100	100 A	10	20	10	80 A	A	6-1	14-4	20, 42
200 A	None	OH△	22 kA	SC2040M200S	1161.00	1	QOM2200VH	200 A	20	40	20	200 A▽	A	6-350	8-2/0	43, 21
200 A	None	OH/UG	22 kA	SC3040M200S	2010.00	1	QOM2200VH	200 A	30	40	10	200 A	A-L	4-250	12-2/0	50, 10
				SC40M200S	2432.00	1	QOM2200VH	200 A	40	40	0	200 A				
REVERSE All-In-One—Semiflush Mount with Service Disconnect (outdoor access) and Load Center (indoor access)																
200 A	None	UG	10 kA	SU3040M200R	2223.00	1	QOM2200VH	200 A	30	40	10	200 A	A or B300	6-300	12-1/0	60, 15
225 A	None	UG	10 kA	SU3040M225R	2646.00	1	QOM2225VH	225 A								
Surface Mount Only																
100 A	None	OH/UG△	10 kA	RC1624M100S	744.00	1	HOM2100	100 A	16	24	8	100 A	A	6-2/0	6-2/0	32, 24
125 A	None	OH/UG△	10 kA	RC1624M125S	1518.00	1	HOM2125	125 A								
125 A	Horn	OH/UG△	22 kA	RC2040M125CH◇	1601.00	1	QOM2125VH	125 A	20	40	20	100 A	A	6-350	12-2/0	40, 21
		OH/UG△	22 kA	RC2040M150CH◇	1713.00	1	QOM2150VH	150 A	20	40	20	150 A★				
150 A	Lever	OH/UG	22 kA	RC3040M150SL	4900.00	1	QOM2150-VH▲	200 A	30	40	10	150 A	A	6-350	14-2/0 Cu 12-2/0 Al	76 / 12
	None	OH/UG△	22 kA	RC2040M200C□	1713.00	1	QOM2200VH	200 A	20	40	20	200 A▽				
200 A	Horn	OH/UG△	22 kA	RC2040M200CH◇	1713.00	1	QOM2200VH	200 A	20	40	20	200 A▽	A	6-350	12-2/0	40, 21
	Lever	OH/UG	22 kA	RC3040M200SL	4900.00	1	QOM2200-VH▲	200 A	30	40	10	200 A				
Surface Mount Only																
150 A	Horn	OH/UG△	22 kA	QC2442M150CH◇	1905.00	1	QOM2150VH	150 A	24	42	18	150 A★	A	6-350	8-2/0	40, 21
200 A	None	OH/UG△	22 kA	QC2442M200C□	1905.00	1	QOM2200VH	200 A	24	42	18	200 A▽				
	Horn	OH/UG△	22 kA	QC2442M200CH◇	1905.00	1	QOM2200VH	200 A	24	42	18	200 A▽				

▲ 125 A Homeline® 2P circuit breaker can be installed in top position only. All other positions are limited to 100 A max.
 ■ Convertible to semiflush with SC200F flange kit (order separately).
 ◆ Suitable for OH service with addition of tunnel kit (SCTK20). Order separately.
 ★ For use with Photovoltaic Systems. Provisions for field-installed CT. If required by adopted code, order retaining kit PK2SCPV separately. See page 1-22.
 ★ Suitable for OH service with addition of tunnel kit (SCTK30). Order separately.
 △ Device does not meet EUSERC Specifications.

□ Device supplied with barrel lock provisions factory-installed.
 ◇ Supplied with horn bypass and 5th jaw factory-installed.
 ★ Use only 15-100 A and 150 A circuit breakers.
 ▼ Use only 15-100 A and 150-200 A circuit breakers.
 ● Use only 15-110 A and 150-200 A circuit breakers.

LOAD CENTERS

Meter Mains and All-in-Ones

- Ring or ringless type meter socket designs available
- UL Listed, suitable **only** for use as service equipment
- Meets EUSERC standards

- Service disconnects are supplied factory-installed, except where noted
- Supplied with 100% branch neutrals; all unused terminals may be used for equipment grounding wires
- Meets Federal Specification W-P-115c as Type 1, Class 2

Table 1.54: Meter Mains

Meets Federal Specification W-P-115c as Type 1, Class 2, UL Listed, suitable only for use as service equipment, 120/240 Vac, 1Ø3W, NEMA 3R Enclosure

Ampere Rating	Bypass Type	Service (Type of Feed)		Short Circuit Current Rating	Cat. No.	List \$ Price	Service Disconnect(s) ▲			Load Center and Branch Circuit Breakers (Order Separately Pages 1-2, 1-3, 1-14)				Hub Type (Order Separately page 1-22)	Line Side Main Lugs AWG/ kcmil (Al/Cu)	Service Ground Lug AWG/ kcmil (Al/Cu)	Weight Each (Lbs) and Pallet Qty.
		UL	UL and EUSERC				2P Circuits (Max.)	Type (Order separately from page 1-22 except as noted)	Ampere Rating (Max.)	Max. Quantity			Ampere Rating (Max.)				
										Spaces	Circuits	Tandems					
Surface and Semiflush Mount ■																	
400 A	None	UG	UG	25 kA	CU12L400CN ◆	3810.00	1	QDL22200 ★	200 A	—	—	—	—	A-L	(2) Studs	4–250	98, 4
					CU12L400FN ◆	4007.00	1	QDL, QGL, QJL▼	200 A	—	—	—	—				
400 A	Class 320 Manual Bypass	UG	—	25 kA	CU12L400CB ◆◇	3986.00	1	QDL22200 ★	200 A	—	—	—	A-L	(2) Studs	4–250	98, 4	
					CU12L400FB ◆◇	4182.00	1	QDL, QGL, QJL▼	200 A	—	—	—					—
400 A	None	UG	UG	25 kA	CU816D400CN ◆★	3975.00	1	QDL22200 ★	200 A	8	16	8	200 A	A-L	(2) Studs	4–250	98, 4
					CU816D400FN ◆★	4172.00	1	QDL, QGL, QJL▼	200 A	—	—	—					
400 A	Class 320 Manual Bypass	UG	—	25 kA	CU816D400CB ◆★◇	4151.00	1	QDL22200 ★	200 A	8	16	8	200 A	A-L	(2) Studs	4–250	98, 4
					CU816D400FB ◆★◇	4347.00	1	QDL, QGL, QJL▼	200 A	—	—	—					
400 A▲	Class 320 Manual Bypass	UG	—	65 kA▲	CUM400CB ◆◇	8688.00	1	DGP36400E20LH★	400 A	—	2 ▲	—	200 A	A-L	(2) Studs	4–250	115, 4
400 A	Class 320 Lever	UG	—	25 kA	QU12L400SL □◇	3810.00	1	QDL22200 ★	200 A	—	—	—	A-L	(2) Studs	4–250	98, 4	
							4	QDL, QGL, QJL▼	200 A	—	—	—					—
Surface Mount Only, Supplied with Feed-Thru Lugs and Provisions for Branch Circuit Breakers																	
400 A	*	UG	—	25 kA	QU816D400SL★□◇	4065.00	1	QDL22200 ★	200 A	8	16	8	200 A	A-L	(2) Studs	4–250	98, 4
Surface and Semiflush Mount ■																	
400 A	Class 320 Lever	UG	—	25 kA	QU12L400CL □◇◇	3810.00	1	QDL22200 ★	200 A	—	—	—	A-L	(2) Studs	4–250	98, 4	
					QU12L400FL □◇◇	4007.00	4	QDL, QGL, QJL▼	200 A	—	—	—					—
400 A		UG	—	25 kA	QU816D400CL □◇★◇	4065.00	1	QDL22200 ★	200 A	8	16	8	200 A	A-L	(2) Studs	4–250	98, 4
400 A		UG	—	25 kA	QU816D400FL □◇★◇	4262.00	1	QDL, QGL, QJL▼	200 A	—	—	—	200 A	A-L	(2) Studs	4–250	98, 4
400 A▲	Class 320 Lever	UG	—	65 kA▲	QUM400CL ◆◇	10000.00	1	DGP36400E20LH★	400 A	—	2 ▲	—	200 A	A-L	(2) Studs	4–250	120, 4
400 A▲	K-4 Bolt-None	UG	—	65kA▲	QUM400CK ◆◇	11175.00	1	DGP36400E20LH★	400 A	—	2 ▲	—	200 A	A-L	(2) Studs	4–250	123, 4

Table 1.55: All-in-One Combination Service Entrance Devices

Ampere Rating	Bypass Type	Service (Type of Feed)		Short Circuit Current Rating	Cat. No.	List \$ Price	Service Disconnect(s) ▲			Load Center and Branch Circuit Breakers (Order Separately Pages 1-2, 1-3, 1-14)				Hub Type (Order Separately page 1-22)	Line Side Main Lugs AWG/ kcmil (Al/Cu)	Service Ground Lug AWG/ kcmil (Al/Cu)	Weight Each (Lbs) and Pallet Qty.
		UL	UL and EUSERC				2P Circuits (Max.)	Type (Order separately from page 1-22 except as noted)	Ampere Rating (Max.)	Max. Quantity			Ampere Rating (Max.)				
										Spaces	Circuits	Tandems					
Surface and Semiflush Mount ■																	
300 A	None	UG	UG	25 kA	SU3040D300CN ◆▽	6600.00	1	QDL22200 ★	200 A	30	40	10	200 A	A-L	(2) Studs	4–250	100, 4
					1	QDL, QGL, QJL▼	100 A	—	—	—	—						
300 A	Class 320 Manual	UG	—	25 kA	SU3040D300CB ◆▽◇	6600.00	1	QDL22200 ★	200 A	30	40	10	200 A	A-L	(2) Studs	4–250	100, 4
					1	QDL, QGL, QJL▼	100 A	—	—	—	—						
400 A	None	UG	UG	25 kA	SU3040D400CN ◆▽	7050.00	1	QDL22200 ★	200 A	30	40	10	200 A	A-L	(2) Studs	4–250	100, 4
					1	QDL, QGL, QJL▼	200 A	—	—	—	—						
400 A	Class 320 Manual	UG	—	25 kA	SU3040D400CB ◆▽◇	7167.00	1	QDL22200 ★	200 A	30	40	10	200 A	A-L	(2) Studs	4–250	100, 4
					1	QDL, QGL, QJL▼	200 A	—	—	—	—						
400 A	Class 320 Manual	UG	—	25 kA	SU3040D400FB ◆▽◇	7364.00	1	QDL, QGL, QJL▼	200 A	—	—	—	200 A	A-L	(2) Studs	4–250	100, 4
					1	QDL, QGL, QJL▼	200 A	—	—	—	—						
400 A	Class 320 Lever	UG	—	25 kA	RU3040D400CL □◇◇	6993.00	1	QDL22200 ★	200 A	30	40	10	200 A	A-L	(2) Studs	4–250	100, 4
					1	QDL, QGL, QJL▼	200 A	—	—	—	—						
400 A	K-4 Bolt-on	UG	—	25 kA	RU3040D400FL □◇◇	7190.00	1	QDL, QGL, QJL▼	200 A	—	—	—	200 A	A-L	(2) Studs	4–250	100, 4
					1	QDL, QGL, QJL▼	200 A	—	—	—	—						
400 A	K-4 Bolt-on	UG	—	25 kA	RU3040D400CK □◇◇	6993.00	1	QDL22200 ★	200 A	30	40	10	200 A	A-L	(2) Studs	4–250	100, 4
					1	QDL, QGL, QJL▼	200 A	—	—	—	—						
400 A	K-4 Bolt-on	UG	—	25 kA	RU3040D400FK □◇◇	7190.00	1	QDL, QGL, QJL▼	200 A	—	—	—	200 A	A-L	(2) Studs	4–250	100, 4
					1	QDL, QGL, QJL▼	200 A	—	—	—	—						

- ▲ UL short circuit current rating is equal to the lowest interrupting rating of any circuit breaker installed.
- For 400 A device with suffix CB, CK, CL, or CN, surface-mount convertible to semiflush with FK400 flange kit (order kit separately). Devices with suffix FB, FL, FN or FK are semiflush only, with the top endwall factory-installed and flanges factory-included.
- ◆ For use only on 120/240 Vac 1Ø3W system (4-jaw meter socket).
- ★ Service disconnect supplied factory-installed.
- ▼ Additional service disconnect for field-installation: order prefix QBL at 10 kA, QDL at 25 kA, QGL at 65 kA, or QJL at 100 kA. Order separately. For complete circuit breaker catalog number, see Section 7.
- △ Option for field installation of two Q-frame, 200 A max. 2-pole branch circuit breakers used as mains for two downstream load centers. Purchase installation kit BMK2Q400 and two Q-frame circuit breakers separately. Order QBL prefix at 10 kA, QDL prefix at 25 kA, or QGL prefix at 65 kA.
- Fifth jaw factory-installed.
- ◇ QQ panel is rated 200 A maximum.
- ★ Supplied with load side feed-thru lugs for 6 AWG–250 kcmil (Al/Cu) conductors.
- ▼ Knockout provided in cover for use with barrel lock kit SCBRLLLOCK (see Accessories, page 1-22).
- Device configuration is not included in EUSERC standards. Consult applicable utility for acceptance.
- * Device with suffix L has Class 320 lever bypass and device with suffix K has a K-4 bolt-on, no bypass.

LOAD CENTERS

Table 1.56: Circuit Breakers for use with Meter Mains and All-In-One Devices

Ampere Rating ▲	Type: HOM, 1P		Type: HOM, 2P		Type: QO, 1P		Type: QO, 2P		Type: QO-VH, 1P		Type: QO-VH, 2P	
	Cat. No. (DE3D)	\$ Price	Cat. No. (DE3D)	\$ Price	Cat. No. (DE2A)	\$ Price	Cat. No. (DE2A)	\$ Price	Cat. No. (DE2A)	\$ Price	Cat. No. (DE2A)	\$ Price
10	—	—	—	—	QO110	29.10	—	—	—	—	—	—
15	HOM115	26.30	—	—	QO115	29.10	—	—	QO115VH	63.00	—	—
20	HOM120	26.30	—	—	QO120	29.10	—	—	QO120VH	63.00	—	—
25	HOM125	26.30	—	—	QO125	29.10	—	—	QO125VH	73.00	—	—
30	HOM130	26.30	HOM230	60.00	QO130	29.10	QO230	67.00	QO130VH	73.00	QO230VH	146.00
35	—	—	HOM235	60.00	QO135	29.10	QO235	67.00	—	—	—	—
40	HOM140	26.30	HOM240	60.00	QO140	29.10	QO240	67.00	—	—	QO240VH	146.00
45	—	—	HOM245	60.00	QO145	29.10	QO245	67.00	—	—	—	—
50	HOM150	26.30	HOM250	60.00	QO150	29.10	QO250	67.00	—	—	QO250VH	146.00
60	—	—	HOM260	60.00	QO160	29.10	QO260	67.00	—	—	QO260VH	146.00
70	—	—	HOM270	123.00	QO170	67.00	QO270	134.00	—	—	QO270VH	224.00
80	—	—	HOM280	168.00	—	—	QO280	189.00	—	—	QO280VH	315.00
90	—	—	HOM290	168.00	—	—	QO290	189.00	—	—	QO290VH	315.00
100	—	—	HOM2100	168.00	—	—	QO2100	189.00	—	—	QO2100VH	315.00
110	—	—	HOM2110	369.00	—	—	QO2110	428.00	—	—	QO2110VH	1034.00
125	—	—	HOM2125	369.00	—	—	QO2125	428.00	—	—	QO2125VH	1034.00
150	—	—	HOM2150BB	428.00	—	—	QO2150	491.00	—	—	QO2150VH	1061.00
175	—	—	HOM2175BB	428.00	—	—	QO2175	491.00	—	—	QO2175VH	1061.00
200	—	—	HOM2200BB	428.00	—	—	QO2200	491.00	—	—	QO2200VH	1061.00

Ampere Rating ▲	Type: QOM1-VH, 2P		Type: QOM2-VH, 2P		Type: QDL, 2P ♦	
	Cat. No. (DE3D)	\$ Price	Cat. No. (DE3D)	\$ Price	Cat. No. (DE2A)	\$ Price
50	QOM50VH ■	140.00	—	—	—	—
60	QOM60VH	140.00	—	—	—	—
70	QOM70VH	140.00	—	—	QDL22070	1143.00
80	QOM80VH	201.00	—	—	QDL22080	1143.00
90	QOM90VH	201.00	—	—	QDL22090	1143.00
100	QOM100VH	201.00	QOM2100VH	468.00	QDL22100	1143.00
110	QOM110VH	468.00	—	—	QDL22110	1143.00
125	QOM125VH	468.00	QOM2125VH	468.00	QDL22125	1143.00
150	—	—	QOM2150VH	468.00	QDL22150	1143.00
175	—	—	QOM2175VH	468.00	QDL22175	1143.00
200	—	—	QOM2200VH	468.00	QDL22200	1143.00
225	—	—	QOM2225VH	468.00	—	—

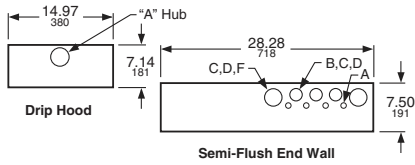
- ▲ Do not exceed mains rating of device
- Reference National Electrical Code Article 230-79.
- ♦ For additional interrupting rating circuit breakers, order circuit breaker prefix QBL at 10 kA, QGL at 65 kA or QJL at 100 kA.

Table 1.57: Accessories, Hubs and Closing Plates

Accessories			
Description	Cat. No.	\$ Price	Disc. Sch.
Generator Kit: Interlocks main service disconnect and generator circuit breaker (order separately). For:			
• Homeline® CSED Devices RC816F-, RC2040M-, SO2040M-	RCGK2	245.00	DE4
• QO CSED Devices QC816F-, QC2442M-	QCQK3	245.00	DE4
Backfed inverter circuit breaker retaining kit for SC2636M200FPV and SC2636M225FPV	PK2SCPV	47.40	DE4
Fifth Jaw Kit for: Meter Main Types: C, RC, SC, QC All-In-One Types: SC, SU (100–225 A), QC, RC, SO	5J	18.30	DE4
Bypass (Horn Type) for Ringless Type Meter Mains and All-In-Ones (100–200 A) (except for RC8L125S, RC1624M100S and RC1624M125S—use RCHB).	MMHB	16.70	DE4
Lexan Meter Socket Cover Plate for:			
• Ring and Ringless Type Meter Mains	29007	10.10	DE4
• Ring and Ringless Type All-In-Ones			
Meter Socket Sealing Rings for Ring Type Meter Mains and All-In-Ones:			
• Snap Type Aluminum (Std.)	2920910001	7.95	DE5
• Screw Type Aluminum	29008W	20.10	DE4
• Snap Type Stainless Steel	ARP00026	16.70	DE4
Anti-Inversion Kit. For use ONLY on 400 A Meter Mains and All-In-Ones with lever bypass.	MMLRK	12.00	DE4
Trim Kit for 2 in. X 6 in. stud wall, used with Reverse All-In-Ones, SU3040M200R, and SU3040M225R	SU2X6TRIM	266.00	DE4
Barrel Lock Kit (Barrel Lock not included), supplied with bracket and mounting screw, refer to listings for where used.	SCBRLLOCK	53.00	DE4
Semiflush Flange Kit for: Meter Mains: SC816D150/200C and RC816D200CH All-In-Ones: SC2040M200C	SC200F	31.80	DE4
Semiflush Flange Kit for ring- and ringless-type Meter Mains and All-In-Ones (400 A Only)	FK400	197.00	DE4
Ringless Type Utility Cover for RU3040D400CL/FL, QU12L400CL/FL, and QU816D400CL/FL. Includes one piece meter socket and pull box cover with handles and closing plate.	R400L	266.00	DE4
Lug Kit includes (4) lugs, for use with 2 AWG–600 kcmil Al/Cu conductors. Lugs are for standard 2-Hole mounting. Meter Main and All-In-One units supplied with (2) studs per phase and neutral will accept one lug per phase and neutral. Not for use on 400 A devices with "K" suffix.	CMECLK4	137.00	DE4
Branch Circuit Breaker Field Installation Kit for two Q-Frame Circuit Breakers (QBL, QDL, or QGL, order separately). For CUM400CB, QUM400CL or QUM400CK - includes (2) mounting pans, (4) wires.	BMK2Q400	153.00	DE4
Overhead Feed Trough for 400 A ring- and ringless-type Meter Mains and All-In-Ones.	OCK400	567.00	DE4
Touch-Up Paint (ASA49 Gray)	PK49SP	39.00	DE1
Ground Bar Kit, Meter Mains and All-In-Ones QC, RC, and SC (100–225 A)	PK15GTA	17.10	DE3A
Filler Plate for: Meter Main Types: QC, CU All-In-One Types: QC	QOPF	3.60	DE3A
Filler Plate for: Meter Main Types: RC, SC All-In-One Types: SC, RC, SU	HOMFP	3.20	DE3A
Neutral Lug (6-2/0 AWG) for: Meter Main Types: RC, SC, QC All-In-One Types: SC, SU, QC, RC	LK100AN	10.80	DE3A

Hubs and Closing Plates				
Hub Series	Conduit Size (inches)	Cat. No.	\$ Price	Disc. Sch.
Closing Plate for "A" Hub opening				
A	1.00	A100	33.90	DE4
	1.25	A125	33.90	DE4
	1.50	A150	33.90	DE4
	2.00	A200	47.90	DE4
2.50	A250	61.00	DE4	
Adapter plate to allow use of "A" Hubs on "A-L" size hub openings				
Closing Plate for "A-L" Hub opening				
A-L	2.00	A200L ★	83.00	DE4
	2.50	A250L	87.00	DE4
	3.00	A300L	111.00	DE4
	3.50	A350L	114.00	DE4
4.00	A400L	119.00	DE4	
Closing Plate for "B" Hub opening				
B	0.75	B075	33.30	DE1A
	1.00	B100	33.30	DE1A
	1.25	B125	33.30	DE1A
	1.50	B150	33.30	DE1A
	2.00	B200	61.35	DE1A
2.50	B250	102.00	DE1A	
B300	3.00	B300	186.00	DE1A

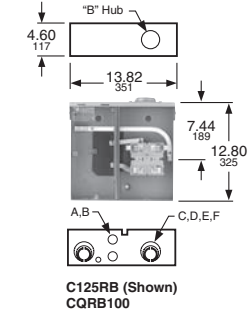
★ Supplied with AAP adapter plate and "A" hub.



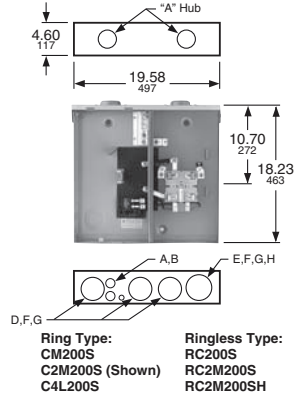
- ▲ Driphood supplied factory-installed and is required for surface mount installation. For semi-flush installation, remove driphood and install flange kit SC200F (order separately).
- Unit supplied with blank top endwall (factory-installed) for surface mount installation. For semi-flush installation, install flange kit FK400 (order separately). Kit includes replacement top endwall (with knockouts) and flanges.
- ◆ Unit supplied with semi-flush top endwall factory installed and semi-flush flanges factory included.

Table 1.58: Knockouts

Symbol	A	B	C	D	E	F	G	H	I	J
Conduit Size (in.)	1/2	3/4	1	1-1/4	1-1/2	2	2-1/2	3	3-1/2	4

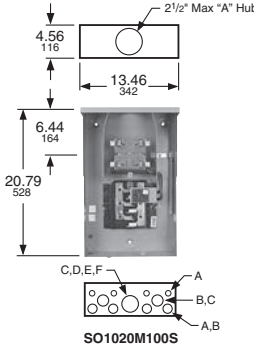


**C125RB (Shown)
QCRB100**

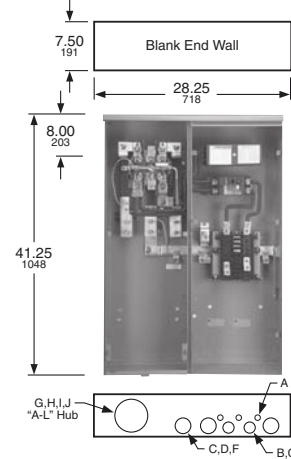


**Ring Type:
CM200S
C2M200S (Shown)
C4L200S**

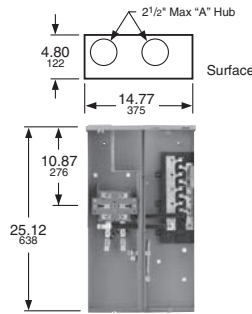
**Ringless Type:
RC200S
RC2M200S
RC2M200SH**



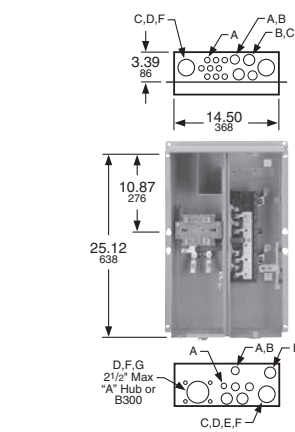
SO1020M100S



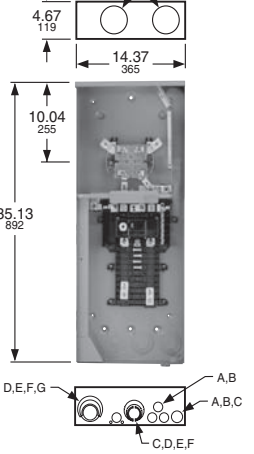
Blank End Wall



**SC8L125S (Shown)
RC8L125S
SC1624M100S
SC1624M125S
RC1624M100S
RC1624M125S**

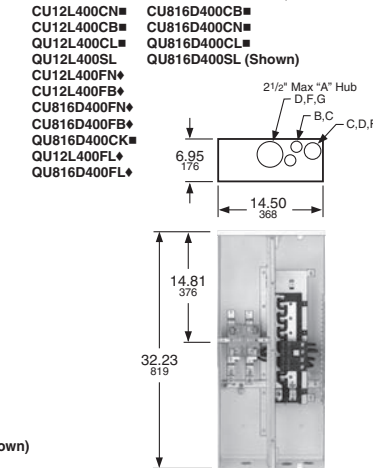


**SC8L125F (Shown)
SC1624M100F
SC1624M125F**



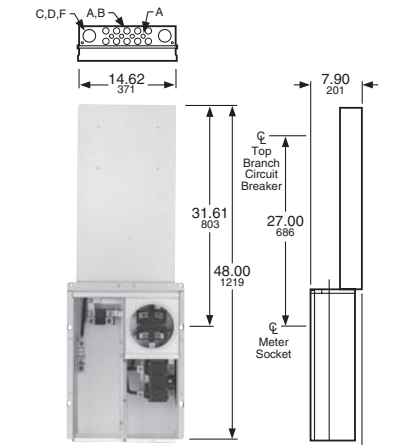
**RC816F100CH
RC816F125C/CH
RC816F150C/CH
RC816F200C/CH
RC12L200C/CH
RC2040M125CH
RC2040M150CH
RC2040M200C/CH**

**QC816F100CH
QC816F125C/CH
QC816F150C/CH (Shown)
QC816F200C/CH
QC12L200C/CH
QC2442M150CH
QC2442M200C/CH
SO2040M200S**

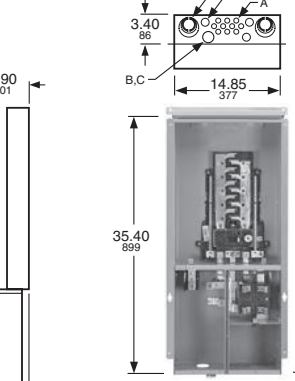


**CU12L400CN
CU12L400CB
CU12L400CL
CU12L400SL
CU12L400FN
CU12L400FB
CU816D400FN
CU816D400FB
CU816D400CK
CU12L400FL
CU816D400FL**

**CU816D400CB
CU816D400CN
CU816D400CL
CU816D400SL (Shown)**

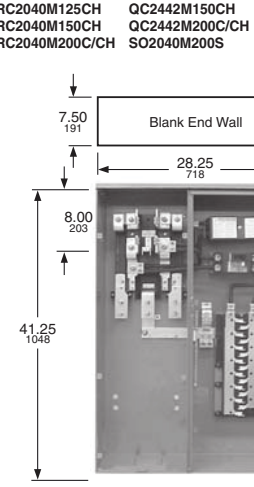


**SU3040M200R (Shown)
SU3040M225R**



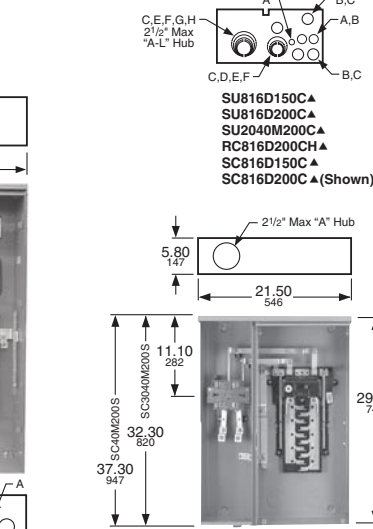
**SC816F200F
SC12L200F
SC2040M125F
SC2040M200F (Shown)**

**SC3040M200F
SC3040M225F
SC2636M200FPV
SC2636M225FPV**



**SU3040D400CB (Shown)
RU3040D400CL
RU3040D400CN
SU3040D400FL
SU3040D300FB
SU3040D400FB
SU3040D400FN**

**SU3040D300CB
SU3040D400CN
RU3040D400FL
RU3040D400FK
CUM400CB
QUM400CL
QUM400CK**



**SU816D150CA
SU816D200CA
SU2040M200CA
RC816D200CA
SC816D150CA
SC816D200CA (Shown)**

**SC12L200S
SC816F150S
SC816F200S**

**SC40M200S
SC2040M200S (Shown)
SC3040M200S**

LOAD CENTERS

Enclosed Molded Case Switches—UL Listed

Table 1.59: Molded Case Switch Included. Does not provide overcurrent protection

Service	Ampere Rating	General Purpose		Rainproof		Box. No. See Page 1-17
		Cat. No.	\$ Price	Cat. No.	\$ Price	
240 Vac	60 A ■	QO260NATS	161.00	QO200TR	161.00	2, 9R ♦
				QO200TRNM	191.00	1NM
				QO260NATR	168.00	1R
120/240 Vac	100 A ★	QO2000NS	276.00	QO2000NRB	338.00	13, 10R

Table 1.60: Housing Bracket

Description	Cat. No.	\$ Price
Bracket used with QO200TR for stucco, aluminum and vinyl siding. Order quantity multiples of 10.	PKHB	6.30



QO200TRNM



QO3100BNF
With Cover Removed



PKHB
Housing
Bracket

Enclosed GFCI Circuit Breakers—UL Listed

Table 1.61: 2P, 120/240 Vac, GFCI circuit breaker included, 10 k AIR

Service	Ampere Rating	Type 3R—Rainproof		Circuit Breaker Included	Box. No. See Page 1-17
		Cat. No.	\$ Price		
120/240 Vac	50 A	QOE250GFIM HOME250SPA	528.00 473.00	QO250GFI HOM250GFI	1NM (Non-metallic) 1R (Metallic)

Circuit Breaker Enclosures—UL Listed

Table 1.62: 22 kA Short Circuit Current Rating.

Not for use with one pole QO circuit breakers. Circuit breakers not included. Order QO®, QO-GFI, QO-AFI, QO-EPD and QO-PL circuit breakers separately from pages 1-2 and 1-3. Accepts QO circuit breakers with factory-installed accessories. Order equipment ground bar PKOGTA2, if required.

Service	Ampere Rating	General Purpose ▼		Rainproof		Box. No. See Page 1-17
		Cat. No.	\$ Price	Cat. No.	\$ Price	
120/240 Vac	100 A 125 A	QO2100BNF/S	83.00	QO2100BNRB	135.00	13, 10R
		QO2125BNF/S	108.00	QO2125BNRB	158.00	18, 13R
240 Vac	100 A	QO3100BNF/S	149.00	QO3100BNRB	207.00	13, 10R

Table 1.63: 10 kA Short Circuit Current Rating.

Circuit breaker not included. Order separately from page 1-2. Will not accept QO-GFI circuit breaker nor QO circuit breakers with factory-installed accessories.

Service	Ampere Rating	General Purpose	Rainproof	Box. No. See Page 1-17
240 Vac	60 A ▲	—	QO2TR	95.00 9R ♦

Table 1.64: Q Frame Enclosures and Q Frame Circuit Breakers—UL Listed

Service	Enclosure Only □				Box No. See Page 1-17	Ampere Rating	Circuit Breaker (Order Separately)							
	Type 1—General Purpose ▼		Type 3R—Rainproof				10 k AIR		25 k AIR		65 k AIR		100 k AIR	
	Cat. No.	\$ Price	Cat. No.	\$ Price			Cat. No.	\$ Price	Cat. No.	\$ Price	Cat. No.	\$ Price	Cat. No.	\$ Price
2P 240 Vac Maximum	Q2220NS or Q23225NF/S	176.00 218.00	Q2220NRB or Q23225NRB	380.00 417.00	19, 11R 20, 12R	70 A	QBL22070	474.00	QDL22070	1143.00	QGL22070	1521.00	QJL22070	1890.00
						80 A	QBL22080	474.00	QDL22080	1143.00	QGL22080	1521.00	QJL22080	1890.00
						90 A	QBL22090	474.00	QDL22090	1143.00	QGL22090	1521.00	QJL22090	1890.00
						100 A	QBL22100	474.00	QDL22100	1143.00	QGL22100	1521.00	QJL22100	1890.00
						110 A	QBL22110	474.00	QDL22110	1143.00	QGL22110	1521.00	QJL22110	1890.00
						125 A	QBL22125	474.00	QDL22125	1143.00	QGL22125	1521.00	QJL22125	1890.00
						150 A	QBL22150	474.00	QDL22150	1143.00	QGL22150	1521.00	QJL22150	1890.00
						175 A	QBL22175	474.00	QDL22175	1143.00	QGL22175	1521.00	QJL22175	1890.00
						200 A	QBL22200	474.00	QDL22200	1143.00	QGL22200	1521.00	QJL22200	1890.00
						225 A	QBL22225	474.00	QDL22225	1143.00	QGL22225	1521.00	QJL22225	1890.00
3P 240 Vac	Q23225NF/S	218.00	Q23225NRB	278.00	20, 12R	70 A	QBL32070	1248.00	QDL32070	1784.00	QGL32070	2442.00	QJL32070	2796.00
						80 A	QBL32080	1248.00	QDL32080	1784.00	QGL32080	2442.00	QJL32080	2796.00
						90 A	QBL32090	1248.00	QDL32090	1784.00	QGL32090	2442.00	QJL32090	2796.00
						100 A	QBL32100	1248.00	QDL32100	1784.00	QGL32100	2442.00	QJL32100	2796.00
						110 A	QBL32110	1248.00	QDL32110	1784.00	QGL32110	2442.00	QJL32110	2796.00
						125 A	QBL32125	1248.00	QDL32125	1784.00	QGL32125	2442.00	QJL32125	2796.00
						150 A	QBL32150	1248.00	QDL32150	1784.00	QGL32150	2442.00	QJL32150	2796.00
						175 A	QBL32175	1248.00	QDL32175	1784.00	QGL32175	2442.00	QJL32175	2796.00
						200 A	QBL32200	1248.00	QDL32200	1784.00	QGL32200	2442.00	QJL32200	2796.00
						225 A	QBL32225	1248.00	QDL32225	1784.00	QGL32225	2442.00	QJL32225	2796.00

Table 1.65: QOM2 Enclosures and QOM2 Circuit Breakers—UL Listed

Service	Enclosure Only Δ				Box No. See Pages 1-17	Ampere Rating	QOM2 Circuit Breaker (Order Separately) ☆	
	Type 1 General Purpose ▼		Type 3R Rainproof				22 k AIR	
	Cat. No.	\$ Price	Cat. No.	\$ Price			Cat. No. ◊	\$ Price
2P 240 Vac Maximum	QOM2225NF/S	234.00	QOM2225NRB	440.00	22, 16R	100 A	QOM2100VH	468.00
						125 A	QOM2125VH	468.00
						150 A	QOM2150VH	468.00
						175 A	QOM2175VH	468.00
						200 A	QOM2200VH	468.00
						225 A	QOM2225VH	468.00

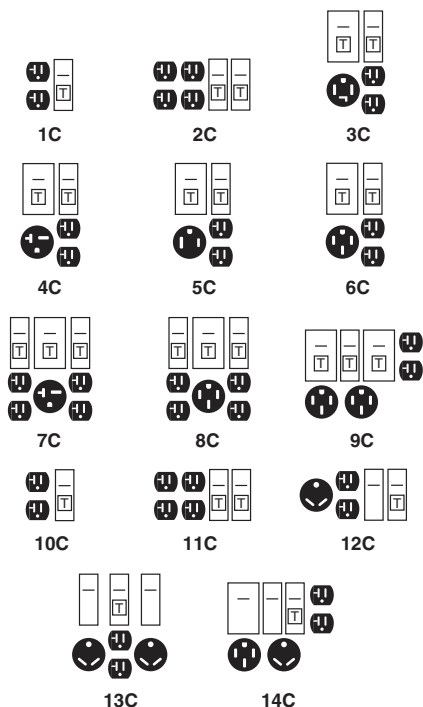
QOM2225NS
With Cover Removed

Q2220NS
With Cover Removed

Q23225NF

(Order Q-Frame circuit breaker separately)

- ▲ Not suitable for service equipment.
- Maximum 10 hp 240 Vac.
- ◆ Top endwall has no hub opening.
- ♦ Maximum 20 hp 240 Vac.
- ▼ Order F for flush, S for surface.
- Δ Equipment ground bar kit PKOGTA2 factory-included.
- Factory-installed groundable neutral assembly includes (2) ground lugs and (2) neutral lugs. Equipment ground kit PKOGTA2 also included.
- ◊ Accepts 200 A max. 2P Q Frame circuit breakers.
- ☆ Add suffix 1021 for 120, 208 or 240 Vac shunt trip. Add \$126.
- ▽ When these 3P circuit breakers are mounted in an enclosure, the maximum AIR rating is 65 kA at 240 Vac and 100 kA at 208 Vac.
- ◊ DE3A Discount Schedule.



For Construction Sites

- Provide temporary power at construction sites.
- Each receptacle protected by QO-GFI circuit breaker in compliance with NEC® requirements.
- Each enclosure is rainproof.
- 10 kA short circuit current rating.
- UL Listed as suitable for use as temporary site service equipment.
- Provided with neutral bonding provisions.
- Boxes have provisions for type "B" hubs to be field-installed.

Table 1.66: Construction Site Panels

Power Outlet Configuration	Service ▲	Mains Ampere Rating	Circuit Breaker (Included)	Receptacles (Included)					Cat. No. ◆	\$ Price	Main Wire Size AWG ★	
				A	C	D	E	F			Cu	Al
1C	1Ø2W	40 A	(1) QO120GFI	1					PAK10C1	441.00	14-6	12-6
2C	1Ø2W	40 A	(2) QO120GFI	2					PAK11C▼	818.00	14-6	12-6
2C	1Ø2W	40 A	(2) QO120GFI	2					PAK11C1	818.00	14-6	12-6
3C	1Ø3W	70 A	(1) QO120GFI (1) QO230GFI	1			1		PAK31CGFI	974.00	8-1	8-1
4C	1Ø3W	70 A	(1) QO120GFI (1) QO220GFI	1		1			PAK36C1GFI	974.00	8-1	8-1
5C	1Ø3W	70 A	(1) QO120GFI (1) QO250GFI	1			1		PAK51CGFI	974.00	8-1	8-1
6C	1Ø3W	70 A	(1) QO120GFI (1) QO250GFI	1	1				PAK55CGFI	974.00	8-1	8-1
7C	1Ø3W	70 A	(2) QO120GFI (1) QO220GFI	2		1			PAK72CGFI	1323.00	8-1	8-1
8C	1Ø3W	70 A	(2) QO120GFI (1) QO250GFI	2	1				PAK76CGFI	1323.00	8-1	8-1
9C	1Ø3W	100 A	(1) QO120GFI (2) QO250GFI	1	2				PAK1004CGFI	1581.00	14-1	12-1

For Recreational Vehicle Parks

- Provide electrical power to individual recreational vehicle park sites.
- Each receptacle protected by appropriate GFI or Standard QO® circuit breaker.
- All receptacles and circuit breakers included.
- 10 kA short circuit current rating.
- UL Listed.
- All enclosures are rainproof.
- No neutral bonding provisions.
- Loop-feed provisions.

Table 1.67: Recreational Vehicle Park Panels

Power Outlet Configuration	Service ▲	Mains Ampere Rating	Circuit Breaker (Included)	Receptacles (Included) ■			Cat. No.	\$ Price	Main Wire Size AWG/kcmil △	
				A	B	C			Phase and Neutral	
Underground or Overhead Loop-Feed Terminals—Non-Pedestal ◆ □										
10C	1Ø2W	40 A	(1) QO120GFI	1			PAK10CTG	470.00		
11C	1Ø2W	40 A	(2) QO120GFI	2			PAK11CTG	795.00	14-6	12-6
12C	1Ø2W	50 A	(1) QO120GFI (1) QO130	1	1		PAK41CTG ◇	564.00		
13C	1Ø2W	75 A	(1) QO120GFI (2) QO130	1	2		PAK61CTG ◇	654.00		
14C	1Ø3W	100 A	(1) QO120GFI (1) QO250 (1) QO130	1	1	1	PAK75CTG (Not Loop Feed) ◇	669.00	14-1	12-1
Pedestal Mounted—Underground Loop-Feed Terminals ★ ▽										
11C	1Ø2W	40 A	(2) QO120GFI	2			PAK11PG	1035.00		
12C	1Ø2W	50 A	(1) QO120GFI (1) QO130	1	1		PAK41PG ◇	852.00		
13C	1Ø2W	75 A	(1) QO120GFI (2) QO130	1	2		PAK61PG ◇	914.00	(2)6-250	(2)6-250
14C	1Ø3W	100 A	(1) QO120GFI (1) QO250 (1) QO130	1	1	1	PAK75PG ◇	1007.00		

- A** 20 A 125 V 2W and Grd. NEMA 5-20R
- B** 30 A 125 V 2W and Grd ANSI 73.13
- C** 50 A 125/250 V 3W and Grd. NEMA 14-50R
- D** 20 A 250 V 2W and Grd. NEMA 6-20R
- E** 30 A 125/250 V 3W and Grd. NEMA 14-30R
- F** 50 A 250 V 2W and Grd. NEMA 6-50R

All non-pedestal devices have provisions to field-install a Type "B" hub on the bottom endwall for bottom feed from a conduit riser. Order Type "B" bolt-on hub (B250 Max.) and two mounting screws (Cat. No. 8002505501) and two hex nuts (Cat. No. 2340102000).

- ▲ (1Ø2W 120 Vac) (1Ø3W 120/240 Vac)
- 20 A receptacles protected by 20 A GFI circuit breaker.
- ◆ Devices have a bolt-on factory-installed closing cap. Order type "B" bolt-on hub separately from page 1-18.
- ★ Equipment ground terminal suitable for (2) 14 or 12 AWG Cu or (2) 12 or 10 AWG Al.
- ▼ Receptacles in this device are in bottom endwall and are accessible with outer door padlocked. "Order Only" from Lexington—Minimum order quantity is 50 devices.
- △ Two wires each per phase, neutral, and equipment ground—for loop feed (except PAK75CTG).
- Equipment ground terminal suitable for (2) 14-12 AWG Cu or (2) 12-10 Al.
- ◇ GFI circuit breaker can be substituted for standard 30 A circuit breaker. For 30 ampere receptacles add \$140.00 per circuit breaker. Add suffix "FI" to catalog number. Example: PAK41CTGFI.
- ★ Stabilizer foot available for use in unstable ground, order HNPSF \$27.50 list.
- ▽ Equipment ground terminals suitable for (2) 10-2/0 AWG Cu or (2) 6-2/0 AWG Al.

LOAD CENTERS

