



Individual Meter Socket
Page 2-2



MP Meter-Pak Metering Equipment
Page 2-5



EZ Meter-Pak Metering Equipment
Page 2-8

Meter Sockets

Ring and Ringless Type Individual Meter Sockets	2-2
Horizontal Ganged, Test Block Bypass Sockets and Accessories	2-3
Dimensions	2-4

MP Meter-Pak™ Meter Centers

Ring and Ringless Devices	2-5
Tenant Circuit Breakers and Accessories	2-6
Dimensions	2-7

EZ Meter-Pak® Meter Centers

Indoor/Rainproof Meter Center Information	2-8
Selection Information	2-9
Indoor/Rainproof Meter Center	2-10
Branch Devices	2-11
<i>New!</i> Main Devices	2-12
Branch Devices	2-13
EZM Main Devices	2-14
EZ Meter-Pak® Meter Centers and Accessories	2-15
Dimensions	2-16



by Schneider Electric

© 2009 Schneider Electric
All Rights Reserved



- Available single or three phase, 600 Vac max., with and without horn or lever bypass, overhead and underground service feed.
- 10 kA short circuit current rating (or higher with utility approval).
- UL Listed, NEMA 3R enclosure.
- Units supplied with bonded neutral.
- Units supplied with hub opening in top endwall require the use of a bolt-on hub, or closing plate.
- Units supplied with solid top are for underground feed only.
- Accessories, refer to page 2-3.

This metering is generally utility specific. Always check with local utility company before installing. Contact your nearest Field Sales Office for additional catalog numbers, if required by utility.

Table 2.1: Individual Meter Sockets

Ampere Rating ▽	Jaw Qty.	Service Type	Cat. No.▲	\$ Price	Lug Wire Range (Al/Cu)			Enclosure Information			Box No. see page 2-4
					Line, Load, and Neutral (AWG/kcmil)	Wire Binding	Gnd. (AWG)	Material	Top Endwall Conf.		
									Hub Opening■	Closing Plate■	
Ringless Type, 1Ø3W 600 Vac Max., Without Bypass or Jaw Release											
125	4	UG	UTZRS101A★	123.00	8-2/0	1/2 in. Hex	14-2	Steel	Solid Top★	—	1R
125	4	OH	UTRS101B	123.00	8-2/0	Slotted	14-2	Steel	Series A	ACP	1R
125	4	OH	UATRS101B	137.00	8-2/0	Slotted	14-2	Aluminum	Series A	ACPA	1R
125	4	OH	URS101BCPL	135.00	8-2/0	Slotted	14-2	Steel	Series A	ACP	1R
125	5	OH/UG	1003880A▼	161.00	8-2/0	Slotted	14-2	Steel	Series A	ACP	1R
200	4	OH	UTRS202B	177.00	8-250	1/2 in. Hex	14-2	Steel	Series A	ACP	3R
200	4	OH	UATRS202B	195.00	8-250	1/2 in. Hex	14-2	Aluminum	Series A	ACPA	3R
200	4	UG	UTRS213A★	212.00	1/0-350	1/2 in. Hex	14-2	Steel	Solid Top★	—	5R
200	4	OH/UG	UTRS213B▼	212.00	1/0-350	1/2 in. Hex	14-2	Steel	Series A	ACP	5R
200	4	OH/UG	UATRS213B▼	225.00	1/0-350	1/2 in. Hex	14-2	Aluminum	Series A	ACPA	5R
200	4	OH/UG	U92197CCCPL□	240.00	1/0-350	1/2 in. Hex	14-2	Steel	(2)Series A	(2)ACP□	7R
Ringless Type, 1Ø3W 600 Vac Max., With Horn Bypass, Without Jaw Release											
125	4	OH/UG	UHTRS101B	161.00	8-2/0	Slotted	14-2	Steel	Series A	ACP	1R
125	5	OH	UGHTRS101L◆	161.00	8-2/0	Slotted	14-2	Steel	A125◆	—	1R
125	4	OH	URS101BDQ◇	138.00	8-2/0	1/2 in. Hex	None	Steel	Series A	ACP	1R
125	5	OH/UG	UGHTRS111C△	207.00	8-2/0	Slotted	14-2	Steel	Series A	ACP△	4R
200	4	OH/UG	UBHMRS212B▼	210.00	8-250	1/2 in. Hex	None	Steel	Series A	ACP	4R
200	4	OH	UHTRS202B	206.00	8-250	1/2 in. Hex	14-2	Steel	Series A	ACP	3R
200	4	OH/UG	UHTRS212B▼	206.00	8-250	1/2 in. Hex	14-2	Steel	Series A	ACP	4R
200	4	OH/UG	UHTRS213B▼	213.00	1/0-350	1/2 in. Hex	14-2	Steel	Series A	ACP	5R
200	4	UG	UHTRS223A★	272.00	1/0-350	1/2 in. Hex	14-2	Steel	Solid Top★	—	2R
200	4	UG	URS212ADQ★◇	203.00	8-250	1/2 in. Hex	None	Steel	Solid Top★	—	4R
Ringless Type, 1Ø3W 600 Vac Max., With Lever Bypass and Jaw Release											
200	4	OH	UTH4203T	465.00	6-350	1/2 in. Hex	14-2	Steel	Series A-L	ACPL	8R
200	4	OH/UG	UTH4213T▼	479.00	6-350	1/2 in. Hex	14-2	Steel	Series A-L	ACPL	9R
200	5	OH	UTH5203T	494.00	6-350	1/2 in. Hex	14-2	Steel	Series A-L	ACPL	8R
200	5	OH/UG	UTH5213T▼	564.00	6-350	1/2 in. Hex	14-2	Steel	Series A-L	ACPL	9R
320	4	OH/UG	UTH4330T▼☆	749.00	Studs Only	3/8 in. dia. studs	14-1/0	Steel	Series A-L	ACPL	11R
Ringless Type, 3Ø4W 600 Vac Max., With Lever Bypass and Jaw Release											
200	7	OH/UG	UTH7213T▼	666.00	6-350	1/2 in. Hex	14-2	Steel	Series A-L	ACPL	9R
320	7	OH	UTH7300T★	830.00	Studs Only	3/8 in. dia. studs	14-1/0	Steel	Series A-L	ACPL	10R
Ringless Type, 3Ø4W 600 Vac Max., Bolt-On Socket Without Bypass											
400	7	OH/UG	UK7T▼☆	2423.00	Studs Only	1/2 in.-20 dia. studs	1/2 in.-20 dia. studs	Steel	Series A-L	ACPL	12R
400	7	OH/UG	UAK7T▼☆	2678.00	Studs Only	1/2 in.-20 dia. studs	1/2 in.-20 dia. studs	Aluminum	Series A-L	ACPLA	12R
Ring Type, 1Ø3W 600 Vac Max., Without Bypass or Jaw Release											
125	4	OH/UG	URTRS101B▼	123.00	8-2/0	Slotted	14-2	Steel	Series A	ACP	1R
200	4	OH/UG	URTRS213B▼	212.00	1/0-350	1/2 in. Hex	14-2	Steel	Series A	ACP	5R

- ▲ Device requires approval from the serving utility, consult your nearest Square D/Schneider Electric sales office.
- Order appropriate bolt-on hub or closing plate separately and install on TOP endwall.
- ◆ Device supplied with 1-1/4 in. bolt-on hub (Cat.No. A125) mounted on TOP endwall.
- ★ Device supplied with solid top endwall (without hub opening).
- ▼ When unit is installed for underground feed, the appropriate closing plate must be ordered separately and installed over hub opening in TOP endwall of device.
- △ Device supplied with closing plate ACP mounted on TOP endwall.
- Device supplied with two closing plates ACP mounted in TOP endwall.
- ◇ Contains "Duquesne Light Co." approved label.
- ☆ Order lugs separately, refer to accessories, page 2-3.
- ▽ Rating is continuous.



UTRS101B



UTRS202B
(cover not shown)



UTH5203T
(cover not shown)



URTRS213B

2 METERING EQUIPMENT



UT2R1121B

Horizontal Ganged Meter Sockets

- 1Ø, 600 Vac max., main lugs only, 2 through 6 meter positions, with and without horn or lever bypass, end or center feed, overhead and underground service feeds.
- 10 kA short circuit current rating (or higher with utility approval).
- UL Listed, NEMA 3R enclosure.
- Supplied with ground lugs.
- Supplied with hub opening in top endwall, requires the use of a bolt-on hub, or closing plate.

This metering is generally utility specific. Always check with local utility company before installing. Contact your nearest Field Sales Office for additional catalog numbers, if required by utility.

Table 2.2: Ringless Type, 1Ø3W, 600 Vac Max., Without Bypass or Jaw Release

Amperes♦	Branch Ratings			Mains Rating (A)	Cat. No.	\$ Price	Main Lugs Phase and Neutral Al/Cu (AWG/kcmil)	Branch Lugs Phase and Neutral Al/Cu (AWG)	Top Endwall▲		Box No. See Page 2-4
	No. of Positions	Socket Jaw Qty.■	Service Type						Hub Type (Order Separately)	Closing Plate (Order Separately)	
100 A	2	4	OH/UG	200	UT2R1121B	453.00	6-250	8-2/0	Series A	ACP	13R
	3			205	UT3R1121B	560.00	6-250				13R1
	4			205	UT4R1131B	660.00	6-350				14R
	5			250	UT5R1131B	908.00	6-350				15R
	6			300	UT6R1131B	1157.00	6-350				16R
200 A	2	4	OH/UG	205	UT2R2122B	647.00	6-250	8-250	Series A Series A-L	ACP ACPL	17R
	4			360	UT4R2352T	1106.00	1/0-500				18R
	5			500	UT5R2392TU	1383.00	1/0-500 or (2)1/0-350				19R
	6			620	UT6R2392TU	1548.00	1/0-500 or (2)1/0-350				20R

- ▲ For hubs and closing plates, see Accessories table below.
- Fifth jaw kit available to convert 4-jaw socket to a 5-jaw socket. See Accessories table below.
- ♦ Rating is continuous.

Meter Mains with Test Block Bypass (Meets EUSERC Requirements)

Table 2.3: Ring Type, 1Ø3W and 3Ø4W, Meter Main with Test Block Bypass (Meets EUSERC Requirements)

Supplied with bondable neutral, suitable for use as service equipment. Suitable for overhead or underground service. UL Listed File E6294.

System (Incoming and Service (Outgoing))	Meter Socket Type	Ampere Rating (Max.)	Short Circuit Current Rating	Cat. No.△	\$ Price	Main Circuit Breaker Type (Order Separately)*
120/240 Vac 1Ø3W	5-Jaw	225 A	100 kA max.	EMT1225CB	4095.00	2P Type QB, QD, QG, QJ, QO▼, QO-VH▼ or QOH▼
208Y/120 Vac 3Ø4W□ or 240/120 Vac 3Ø4W Delta	7-Jaw	225 A	65 kA max.	EMT3225CB	5355.00	3P Type QB, QD, QG or QJ

- ★ Refer to page 2-15 to select main circuit breaker.
- ▼ Requires use of EZM125QOA adapter (order separately), when using QO (40 A-125 A, 2-pole) 10kA max. SCCR, QO-VH (40 A-60 A, 2-pole) 22kA max. SCCR, or QOH (40 A-60 A, 2-pole) 42kA max. SCCR. Refer to page 2-15 for pricing.
- △ Refer to page 2-4 for box dimensions.
- 100 kA max.

Table 2.4: EMT Terminal Wire Size ♦

Line Phase Lug	Line Neutral Lug	Service Ground Lug	Equipment Ground Lug	Load Neutral Lug
6 AWG-300 kcmil Al/Cu	6 AWG-350 kcmil Al/Cu	4 AWG-300 kcmil Al/Cu	6 AWG-300 kcmil Al/Cu	4 AWG-300 kcmil Al/Cu

♦ Refer to circuit breaker listings for usable load lug wire sizes.

Meter Socket Accessories

Table 2.5: Meter Socket Accessories

Accessory	Description	Cat. No.	\$ Price	
Fifth-Jaw Kit	Converts a 4-jaw meter socket to a 5-jaw meter socket. For use on meter sockets supplied without lever bypass or jaw release only.	A5J	14.90	
Closing Plates (to seal hub openings)	For Series A (steel)	ACP	13.40	
	For Series A (aluminum)	ACPA	11.90	
	For Series A-L (steel)	ACPL	18.30	
	For Series A-L (aluminum)	ACPLA	16.50	
Hubs (listed by conduit size)	Series A	1.00 inch	A100	33.90
		1.25 inch	A125	33.90
		1.50 inch	A150	33.90
		2.00 inch	A200	47.90
		2.50 inch	A250	61.00
	Series A-L	2.00 inch	A200L	83.00
		2.50 inch	A250L	87.00
		3.00 inch	A300L	111.00
		3.50 inch	A350L	114.00
		4.00 inch	A400L	119.00
Series B	3.00 inch	B300☆	186.00	
Adapter Plate	To allow the use of a Series A Hub on a device that is setup for a series A-L Hub.	AAP	33.80	
Lug Kits	For use on meter sockets supplied with Line, Load, and Neutral Studs only. Be sure to order enough lugs for each device (a typical 1Ø device requires 6 lugs).			
	Includes one, two-barrel lug (6-250 kcmil)	ARP00118	38.10	
	Includes one, single barrel lug (4-600 kcmil)	ARP00129	55.00	
Sealing Ring	Includes three, two-barrel lugs (6-350 kcmil)	ARP00427	135.00	
	Snap-on Aluminum (Standard)	2920910001	8.00	
	Snap-on Stainless Steel (Non-standard)	ARP00026	16.70	
	Screw Type Aluminum (Non-standard)	29008W	20.10	

☆ DE1A Discount.



EMT3225CB



EMT1225CB Without Covers

METERING EQUIPMENT 2

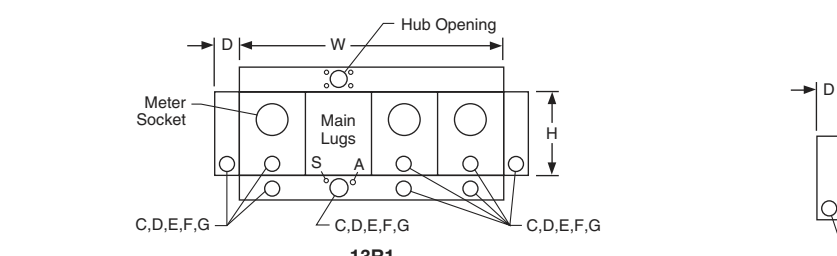
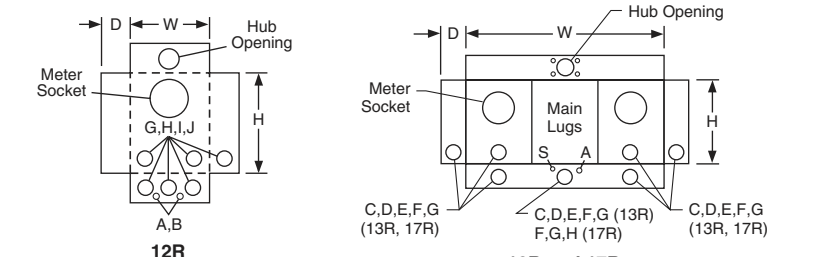
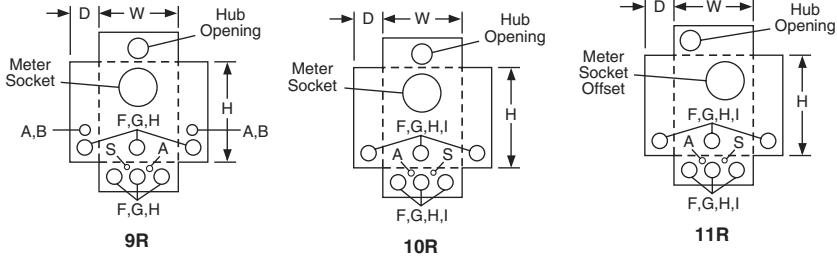
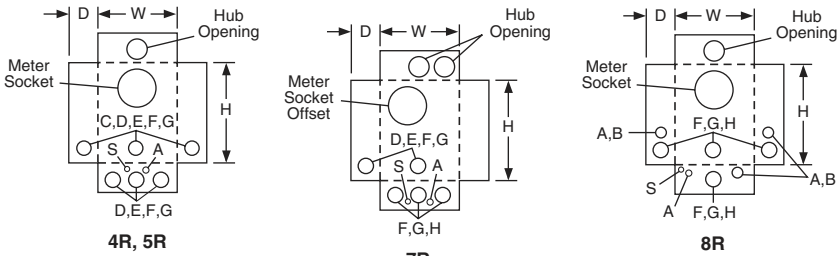
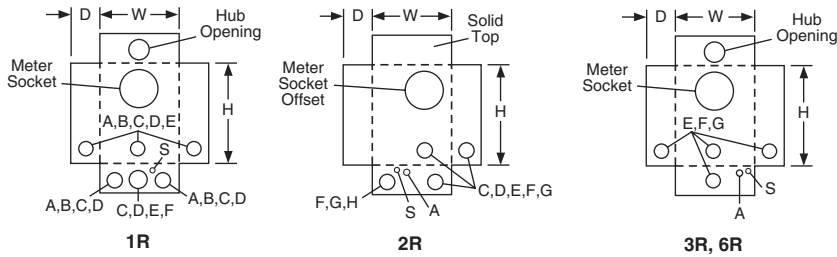


Table 2.6: Enclosure Dimensions

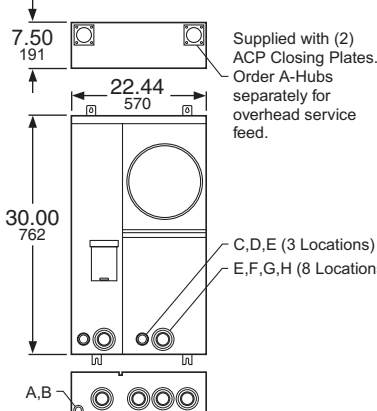
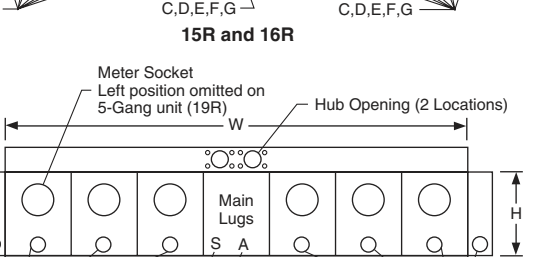
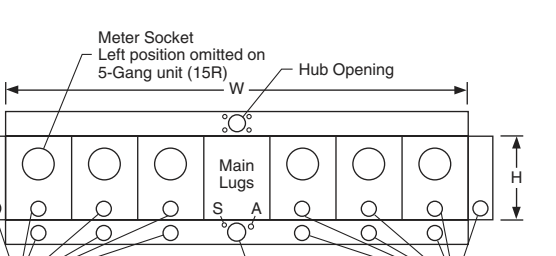
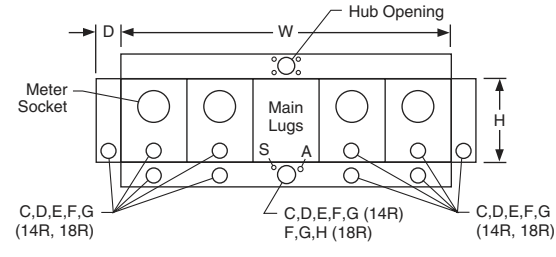
Box No.	Dimensions (Inches)			Hub Opening (Max. Conduit Size) ▲
	H	W	D	
1R	10.88	8.00	3.50	Series A
2R	13.00	13.00	4.94	Solid Top
3R	14.00	8.00	4.38	Series A
4R	14.00	11.00	4.38	Series A
5R	15.00	11.00	4.38	Series A
6R	15.50	8.00	4.36	Series A
7R	17.13	13.00	4.94	(2) Series A
8R	19.00	10.50	4.94	Series A-L
9R	19.00	13.00	4.94	Series A-L
10R	34.50	15.00	5.68	Series A-L
11R	36.62	15.00	5.68	Series A-L
12R	43.00	20.25	6.00	Series A-L
13R	14.12	24.31	4.50	Series A
13R1	14.12	32.50	4.50	Series A
14R	14.12	40.62	4.50	Series A
15R	14.12	48.75	4.50	Series A
16R	14.12	57.00	4.50	Series A
17R	14.12	24.31	5.38	Series A
18R	14.12	40.62	5.38	Series A-L
19R	14.12	54.75	5.38	(2) Series A-L
20R	14.12	63.00	5.38	(2) Series A-L

▲ Refer to page 2-3 for closing plates and hubs.

Table 2.7: Knockout Information

Symbol	Knockouts										
	S	A	B	C	D	E	F	G	H	I	J
Conduit Size (in.)	5/16	1/2	3/4	1	1-1/4	1-1/2	2	2-1/2	3	3-1/2	4

■ Knockout for grounding conductor.



EMT 1225CB and EMT 3225CB

2 METERING EQUIPMENT



MP44125

Ring and Ringless Type Devices

- Consult local utility for approval before installation.
- 120/240 Vac 1Ø3W.
- Main lugs only—two to six meter sockets.
- Enclosures are indoor/rainproof NEMA 3R construction.
- Suitable only for use as service equipment.
- Swingable mounting feet supplied at bottom of device.
- Factory-installed mechanical lugs, alternate lugs and NEMA/EUSERC lug landing kits available.
- Surface mount, convertible to semi-flush with field installed flange kit.
- Ring type devices supplied with 4-jaw meter sockets (5th jaw kits available, order separately).
- Ringless type devices supplied with 5-jaw meter sockets, available with and without horn or lever bypass.
- Provisions for mounting 2-pole circuit breaker for each meter socket position (order circuit breakers separately).
- Mounting channel supplied, except for box 1R (125 A, 2-position).
- Combination overhead/underground feed.

Table 2.8: Ring Type MP Meter-Pak Metering Equipment with 125 A (42 kA Maximum SCCR) or 200 A (22 kA Maximum SCCR) Meter Socket Positions

Amperes per Pole	No. of Poles	Factory-Installed Main Lug Ampacity (See page 2-6 for alternate lugs)	Main Bus Ampacity (A)	Cat. No.	\$ Price	Line Lug Wire Size Al/Cu AWG/kcmil	Circuit Breaker Type (2P)	Hub Prov.▲	Semi-Flush Flange Kit	Wt Lbs	Box No.
125	2	200	200	MP22125 ■	977.00	(1) 4-250	QO, QO-VH, QOH	A/B300	MPSF12	46	1R
	3	300	300	MP33125 ◆	1187.00	(1) 1/0-600 or (2) 1/0-250		A-L	MPSF14	95	2R
	4	400	400	MP44125 ◆	1730.00	(1) 1/0-600 or (2) 1/0-250		A-L	MPSF14	97	2R
	5	400 Al 500 Cu	500	MP55125 ◆	2079.00	(1) 1/0-600 or (2) 1/0-250		(4) A-L	MPSF16	130	3R
	6	400 Al 500 Cu	600	MP66125 ◆	2415.00	(1) 1/0-600 or (2) 1/0-250		(4) A-L	MPSF16	132	3R
200	2	400	400	MP42200 ◆	1274.00	(1) 1/0-600 or (2) 1/0-250	QOM2-MM, QOM2-MVH	(4) A-L	MPSF23	99	4R
	3	400	400	MP43200 ◆	2151.00	(1) 1/0-600 or (2) 1/0-250			MPSF23	99	4R
	4	400	600	MP64200 ◆	2814.00	(1) 1/0-600 or (2) 1/0-250			MPSF24	135	5R
	5	600 Al, 750 Cu	800	MP85200 ◆	3377.00	(2) 3/0-500			MPSF26	173	6R
	6	600 Al, 750 Cu	800	MP86200 ◆	4040.00	(2) 3/0-500			MPSF26	173	6R

- ▲ For A and A-L Hubs see page 2-3, for B Hubs see page 3-9.
- Meets EUSERC standards.
- ◆ Meets EUSERC standards with addition of lug landing kit, MMSK2.

Table 2.9: Ringless Type MP Meter-Pak Metering Equipment with 125 A (42 kA Maximum SCCR) or 200 A Type MPR, MPH (22 kA Maximum SCCR) or 225 A Type MPL (100 kA Maximum SCCR) Meter Socket Positions

Amperes Per Pos.	No. of Pos.	Factory-Installed Main Lugs Ampacity (See page 2-6 for alternate lugs)	Main Bus Ampacity	No. Bypass Cat. No.	\$ Price	Horn Bypass Cat. No.	\$ Price	Lever Bypass Cat. No.	\$ Price	Line Lug Wire Size Al/Cu AWG/kcmil	Circuit Breaker Type (2P) (See page 2-6)	Hub Prov. ★	Semi-Flush Flange Kit	Wt Lbs	Box No.
125	2	200	200	MPR22125	995.00	MPH22125	1002.00	—	—	(1) 4-250	QO, QO-VH, QOH	A/B300	MPSF12	46	1R
	3	300	300	MPR33125	1220.00	MPH33125	1253.00	—	—	(1) 1/0-600 or (2) 1/0-250		A-L	MPSF14	95	2R
	4	400	400	MPR44125	1781.00	MPH44125	1830.00	—	—	(1) 1/0-600 or (2) 1/0-250		A-L	MPSF14	97	2R
	5	400 Al 500 Cu	500	MPR55125	2246.00	MPH55125	2330.00	—	—	(1) 1/0-600 or (2) 1/0-250		(2) A-L	MPSF16	130	3R
	6	400 Al 500 Cu	600	MPR66125	2615.00	MPH66125	2715.00	—	—	(1) 1/0-600 or (2) 1/0-250		(2) A-L	MPSF16	132	3R
200	2	400	400	MPR42200	1290.00	MPH42200	1299.00	—	—	(1) 1/0-600 or (2) 1/0-250	QOM2-MM, QOM2-MVH	(4) A-L	MPSF23	99	4R
	3	400	400	MPR43200	2186.00	MPH43200	2219.00	—	—				MPSF23	99	4R
	4	400	600	MPR64200	2865.00	MPH64200	2916.00	—	—				MPSF24	135	5R
225	2	350	350	—	—	—	—	MPL32225	1739.00	(1) 1/0-600 or (2) 1/0-250	QBP-TM, QDP-TM, QGP-TM or QJ-TM QO▼, QO-VH▼ or QOH▼	(2) A-L	N/A	105	7R
	3	400	500	—	—	—	—	MPL53225	2741.00				N/A	147	8R
	4	400	600	—	—	—	—	MPL64225	3656.00				N/A	200	9R
200	5	600 Al, 750 Cu	800	MPR85200	3545.00	MPH85200	3627.00	—	—	(2) 3/0-500	QOM2-MM, QOM2-MVH	(4) A-L	MPSF26	173	6R
	6	600 Al, 750 Cu	800	MPR86200	4241.00	MPH86200	4341.00	—	—	(2) 3/0-500			MPSF26	173	6R

- ★ For A and A-L Hubs see page 2-3, for B Hubs see page 3-9.
- ▼ Requires use of EZM125QOA adapter (order separately). Refer to page 2-15 for pricing.

UL Listed short circuit current rating depends on lowest interrupting rating of circuit breaker installed.

METERING EQUIPMENT
2

Tenant Circuit Breakers

UL Listed Short Circuit Current Rating depends on lowest interrupting rating of circuit breaker installed. (Refer to the table on the bottom of page 2-9 for Square D certified ratings for downstream panelboards and load centers.)

Table 2.10: Tenant Circuit Breakers

Amperes	10 k AIR 120/240 Vac	\$ Price (DE2A)	22 k AIR 120/240 Vac	\$ Price (DE2A)	42 k AIR 120/240 Vac	\$ Price (DE2A)	100 k AIR 120/240 Vac	\$ Price (DE2A)
For use in 125 A Max. Type MP, MPR and MPH Meter-Pak Metering Equipment								
40	QO240	67.00	QO240VH▲	146.00	QOH240	317.00	—	—
50	QO250	67.00	QO250VH▲	146.00	QOH250▲	317.00	—	—
60	QO260	67.00	QO260VH	146.00	QOH260▲	317.00	—	—
70	QO270	134.00	QO270VH	224.00	QOH270▲	528.00	—	—
80	QO280	189.00	QO280VH	315.00	QOH280▲	651.00	—	—
90	QO290	189.00	QO290VH	315.00	QOH290	651.00	—	—
100	QO2100	189.00	QO2100VH	315.00	QOH2100	651.00	—	—
125	QO2125	428.00	QO2125VH	1034.00	QOH2125	1389.00	—	—
For use in 200 A Max. Type MP, MPR and MPH Meter-Pak Metering Equipment								
100	QOM2100MM	474.00	QOM2100MVH	1143.00	—	—	—	—
125	QOM2125MM	474.00	QOM2125MVH	1143.00	—	—	—	—
150	QOM2150MM	474.00	QOM2150MVH	1143.00	—	—	—	—
175	QOM2175MM	474.00	QOM2175MVH	1143.00	—	—	—	—
200	QOM2200MM	474.00	QOM2200MVH	1143.00	—	—	—	—
For use in 225 A MPL Lever Bypass Meter-Pak Metering Equipment								
Amperes	10 k AIR 120/240 Vac	\$ Price (DE2A)	25 k AIR 120/240 Vac	\$ Price (DE2A)	65 k AIR 120/240 Vac	\$ Price (DE2A)	100 k AIR 120/240 Vac	\$ Price (DE2A)
40	QO240■	67.00	QO240VH▲◆■	146.00	QOH240■★	317.00	—	—
50	QO250■	67.00	QO250VH▲◆■	146.00	QOH250■★▲	317.00	—	—
60	QO260■	67.00	QO260VH▲◆■	146.00	QOH260■★▲	317.00	—	—
70	QBP22070TM	474.00	QDP22070TM	1143.00	QGP22070TM	1521.00	QJP22070TM	1890.00
80	QBP22080TM	474.00	QDP22080TM	1143.00	QGP22080TM	1521.00	QJP22080TM	1890.00
90	QBP22090TM	474.00	QDP22090TM	1143.00	QGP22090TM	1521.00	QJP22090TM	1890.00
100	QBP22100TM	474.00	QDP22100TM	1143.00	QGP22100TM	1521.00	QJP22100TM	1890.00
110	QBP22110TM	474.00	QDP22110TM	1143.00	QGP22110TM	1521.00	QJP22110TM	1890.00
125	QBP22125TM	474.00	QDP22125TM	1143.00	QGP22125TM	1521.00	QJP22125TM	1890.00
150	QBP22150TM	474.00	QDP22150TM	1143.00	QGP22150TM	1521.00	QJP22150TM	1890.00
175	QBP22175TM	474.00	QDP22175TM	1143.00	QGP22175TM	1521.00	QJP22175TM	1890.00
200	QBP22200TM	474.00	QDP22200TM	1143.00	QGP22200TM	1521.00	QJP22200TM	1890.00
225	QBP22225TM	474.00	QDP22225TM	1143.00	QGP22225TM	1521.00	QJP22225TM	1890.00

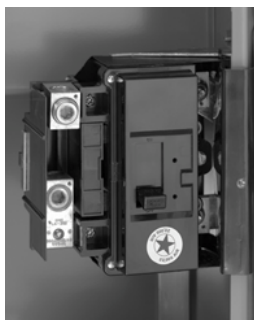
- ▲ Order only. Not stocked in PDS. Order Point: Lincoln.
- Requires use of EZM125QOA adapter (order separately). Refer to page 2-15 for pricing.
- ◆ QO-VH tenant circuit breakers are rated 22 kAIR at 120/240 Vac.
- ★ QOH tenant circuit breakers are rated 42 k AIR at 120/240 Vac.



QO2100VH
2P, Plug-on Type
Circuit Breaker



QDP2200TM
2P, Bolt-on Type
Circuit Breaker



QOM2200MVH

2
METERING EQUIPMENT

Accessories

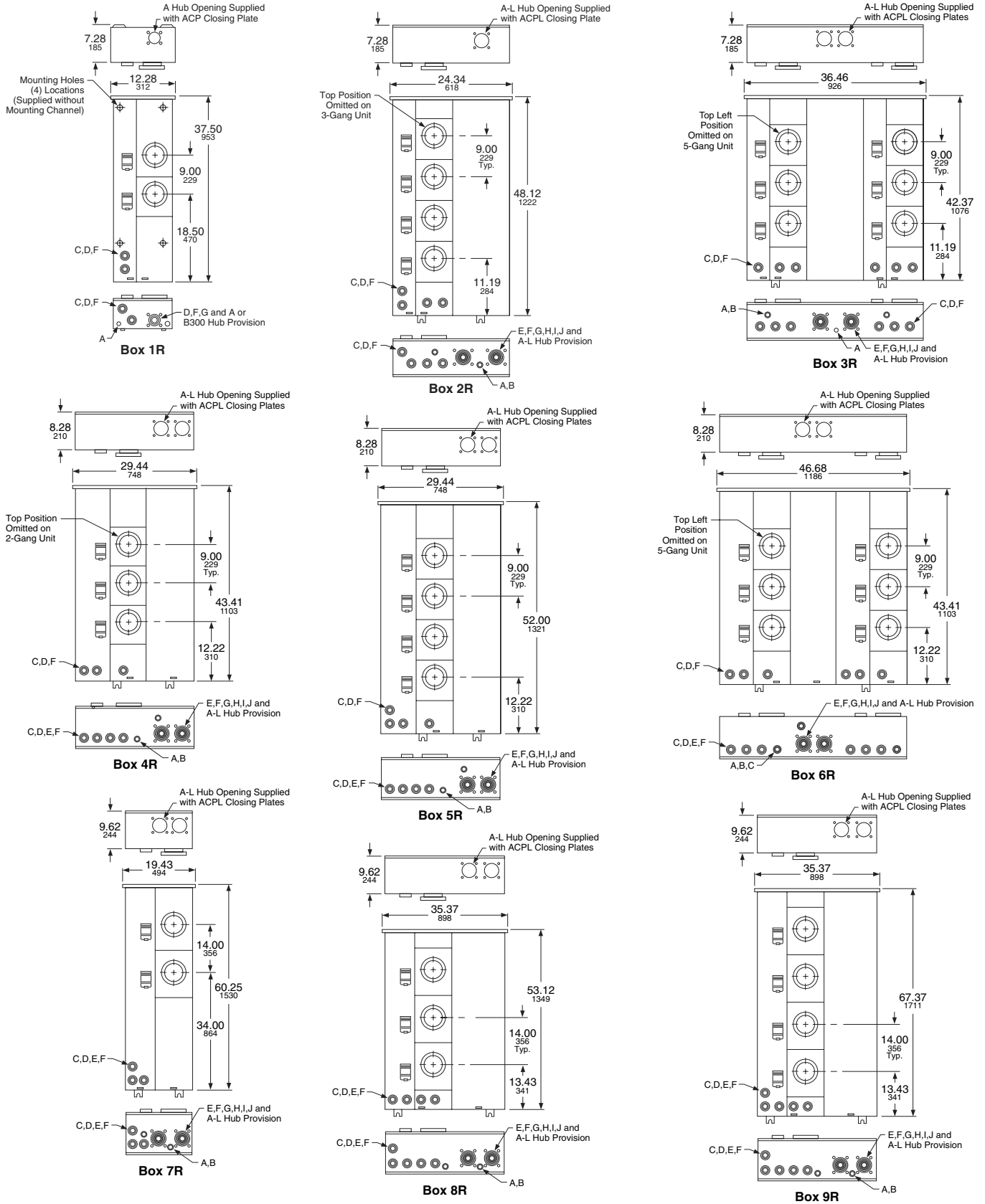
Table 2.11: Accessories

Accessory	Description	Cat. No.	\$ Price
Fifth Jaw Kit	Fifth Jaw Kit	5J	18.30
Horn Bypass Kit	For MPR and MPH only	MMHB	16.70
QO Adapter	For Bolt-on Q2M tenant circuit breakers (40–125 A, 2P)	EZM125QOA	273.00
Slider Type Manual Circuit Closing:	125 A Ring Style 2 Position Top Meter (Only)	MM125MB▼	171.00
	125 and 200 A Ring Style	MM200MB▼	171.00
Sealing Rings:	Snap-on Aluminum	2920910001	8.00
	Screw Type Aluminum	29008W	20.10
	Snap-on Type Stainless Steel	ARP00026	16.70
Meter Cover-Lexan®	Meter Cover-Lexan®	29007	10.10
Optional Lug Kits:	(1) 1/0–600 AWG/kcmil or (2) 1/0–250 AWG/kcmil per phase	MMLK250△□	150.00
	(2) 3/0–500 AWG/kcmil per phase	MMLK500□	200.00
	(2) 2–600 AWG/kcmil per phase	MMLK600□	233.00
Semiflush Kits:	125 A 2 Position	MPSF12	101.00
	125 A 3–4 Position	MPSF14	134.00
	125 A 5–6 Position	MPSF16	218.00
	200 A 2–3 Position	MPSF23	144.00
	200 A 4 Position 200 A 5–6 Position	MPSF24 MPSF26	171.00 255.00
NEMA/EUSERC Lug Landing Kit:	For 3 through 6 position 125 A and 200 A devices. Each pad rated 600 A maximum and includes (2) 1/2-13 studs and mounting hardware.	MMSK2□	185.00
NEMA Lug Landing Kit:	For use ONLY on MPL43225, MPL53225 and MPL64225 with optional lugs. See wiring diagram of each device for optional lugs.	MMSK4	276.00
MP Meter-Pak Wireway: (Wall Mount Pedestal)	125 A 2 Position ONLY	MP43X8PED	441.00
	125 A 3–6 Position	MP43X11PED	504.00
	200 A 2–6 Position	MP43X11PED	504.00
	MPL32-225	MP35X11PED◇	504.00
	MPL53-225	MP43X11PED	504.00
MP Meter-Pak Wireway Extensions:	MPL64-225	MP35X11PED◇	504.00
	Used ONLY with MP43X8PED	MP12X8PEDEXT◇	102.00
	Used with MP43X11PED and MP35X11PED	MP12X11PEDEXT◇	126.00

- ▼ The meter center short circuit current rating is 10 kA when manual circuit closing is used. Not rated for continuous duty.
- △ Standard lug for 3 through 6 position 125 A and 2 through 4 position 200 A devices.
- Cannot be installed on 2 position 125 A device.
- ◇ Order only. Not stocked in PDS. Order point: Lexington.

For hubs and closing plates Page 2-3

Dimensions and Knockouts



Knockouts										
Symbol	A	B	C	D	E	F	G	H	I	J
Conduit Size (in.)	1/2	3/4	1	1-1/4	1-1/2	2	2-1/2	3	3-1/2	4

NEMA 3R Construction

240 Vac Maximum, for use on AC systems, suitable for use as Service Equipment.

Utility Company Requirements Review local utility requirements to ensure that metering equipment meets their standards.

EZ Meter-Pak meter center enclosures meet NEC wire bending requirements, and are designed for wall mounting only (not suitable for floor mounting). All unmetrated conductor compartments may be sealed by the utility company.

EZ Meter-Pak meter centers have UL Listed short circuit current ratings up to 100 kA at 240 Vac when properly applied. For three-tier series ratings refer to Data Bulletin 4100DB0301 and Instruction Bulletin 80043-303-22.

Suitable incoming services for an EZM main device and available outgoing feeder(s) to downstream panelboards from EZM branch section(s)—

Incoming Service to Main Device 120/240 Vac, 1Ø3W

Available outgoing feeder(s) to downstream panelboards:

- 120/240 Vac, 1Ø3W (4-jaw ring type meter sockets, two-pole circuit breakers) (5-jaw ringless meter sockets, two-pole circuit breakers).

Incoming Service to Main Device 240/120 Vac, 3Ø4W Delta

Available outgoing feeder(s) to downstream panelboards:

- 120/240 Vac, 1Ø3W (Fed from transformer's "A-Phase" and "C-Phase" only.) NOTE: Connection to High-Leg "B-Phase" not permitted for this service (4-jaw ring type meter sockets, two-pole circuit breakers) (5-jaw ringless meter sockets, two-pole circuit breakers) Standard 3Ø IN/1Ø OUT branch units **are not suitable for use on this Delta System**. Special branch units are available for this System by adding suffix: "**CA**" to catalog number (Typical Examples: EZM313125CA, EZM313125XCA, EZM313125CUXCA, EZM314225CA, EZM314225XCA, EZM314225CUXCA, EZM315225CA, EZM314225CUCA, etc.).
- 240/120 Vac, 3Ø4W Delta (7-jaw meter sockets, three-pole circuit breakers).

Incoming Service to Main Device 208Y/120 Vac, 3Ø4W

Available outgoing feeder(s) to downstream panelboards:

- 120/208 Vac, 1Ø3W (5-jaw meter sockets, two-pole circuit breakers)
- 208Y/120 Vac, 3Ø4W (7-jaw meter sockets, three-pole circuit breakers).

Main Devices

- 400, 600 and 800 A main disconnects may be end mounted with branch units having 800 A or 1200 A continuous horizontal cross bus.
- 1000 and 1200 A main disconnect or terminal box **must be center mounted** when used with branch devices with main bus rated 800 A continuous.
- 1600 A main disconnect or terminal box **must be center mounted**.
- 2000 A main disconnect **must be center mounted** and requires use of branch units having 1200 A continuous horizontal cross bus.
- 400, 800 and 1200 A Type EZM-TBU tap boxes supplied with lug landings to meet EUSERC requirements.

Main Circuit Breaker ratings: 400, 600, 800, 1000, 1200, 1600 and 2000 A

Main Fusible Switch ratings: 400, 600, 800, and 1200 A (1Ø3W only)

Main Lugs Terminal Box ratings: 225, 400, 600, 800, 1200, 1600, and 2000 A

Branch Units

- **125 A and 225 A residential branch units** are available in ring type or ringless type construction and are supplied with 800 A continuous aluminum horizontal cross bus as standard (Example: EZM314125). For optional 1200 A continuous copper horizontal cross bus with aluminum vertical connectors, add suffix "**X**" to catalog number (Example: EZM314125X). For optional 1200 A continuous all-copper bussing, add suffix "**CUX**" to catalog number (Example: EZM314125CUX). NOTE: 5-gang 225 A EZM, EZMR and EZMH residential branch units are supplied with 1200 A continuous Cross Bus as standard, do not add suffix "X" or "CUX" to these units (Examples: EZMR315225 or EZMR315225CU). Plug-in style residential meter sockets are available as ring type **EZM** without bypass, ringless type **EZMR** without bypass, and ringless type **EZMH** with horn bypass.

Tenant circuit breakers must be ordered separately for these branch units. 125 A max. units make use of Type QO, QO-VH or QO-H two-pole tenant circuit breakers (40–125 A). 225 A max. units make use of Type QDP-TM, QBP-TM, QGP-TM and QJP-TM two-pole tenant circuit breakers (70–225 A), and may also make use of two-pole Type QO (40–125 A at 10 kA max.), two-pole Type QO-VH (40–60 A at 100 kA max.), or two-pole Type QO-H (40–60 A at 100 kA max.) tenant circuit breakers.

- **225 A commercial branch units** are available in ring type or ringless type construction and are supplied with 1200 A copper horizontal cross bus with aluminum vertical connectors as standard (Example: EZML314225). For optional 1200 A continuous all-copper bussing, add suffix "**CU**" to catalog number (Example: EZML314225CU). Plug-in style commercial meter sockets are available as ring type **EZMT** with test block bypass (meets EUSERC requirements), ringless type **EZMR** without bypass, and ringless type **EZML** with lever bypass.

225 A max. units make use of type QDP-TM, QBP-TM, QGP-TM and QJP-TM two-pole or three-pole tenant circuit breakers (70–225 A), and may also make use of two-pole type QO (40–125 A at 10 kA max.), two-pole type QO-VH (40–60 A at 100 kA max.), or two-pole type QO-H (40–60 A at 100 kA max.) tenant circuit breakers.

Note: QO, QO-VH and QO-H tenant circuit breakers used in 225 A branch units require the use of adapter **EZM125QOA** (purchased separately). Refer to page 2-15 for pricing.

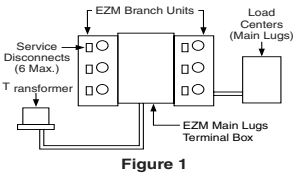
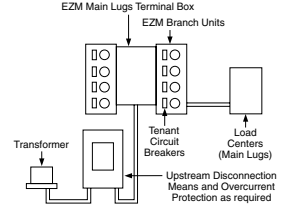
- **400 A branch units** are available in ringless type construction only, and are supplied with 1200 A continuous all-copper bussing as standard (Example: EZML332400). These branch units are supplied with factory-installed type DJM tenant circuit breakers that have a field adjustable ampere rating trip setting from 160 A min. to 400 A max. A tamper-evident seal kit is available where needed, order seal kit **29375** (refer to NEC 240-6 [c]). 400 A branch units are available as Type **EZML** with plug-in style lever bypass type meter sockets, or Type **EZMK** with bolt-on style with manual bypass type meter sockets.
- Units having **800 A continuous horizontal cross bus WILL CONNECT** with units having **1200 A continuous horizontal cross bus**.
- **Single phase units** (three bus bars in horizontal cross bus) **WILL NOT CONNECT** with **three phase units** (four bus bars in horizontal cross bus).

For Load Center Three-Tiered Series Ratings used downstream from Metering Equipment, refer to Data Bulletins : 4100DB0301 and 2700DB9901.

- Review local utility requirements to ensure that metering equipment meets their standards.
- Check local utility to determine available fault current at the meter center.
- Using the SCCR table:
 - Select meter center configuration, main lugs only (Six Disconnect Rule), or remote main, main circuit breaker, or main fusible switch.
 - Read down to select SCCR equal to, or greater than desired rating.
 - Read across to select branch unit tenant circuit breaker type.
 - Continue reading across to select EZM main device type.

Table 2.12: UL Listed Meter Center Short Circuit Current Ratings (SCCR)

Tenant circuit breakers of same frame size having higher AIR values may replace tenant circuit breakers as listed in tables below and maintain the series rating.

Figures	Short Circuit Current Rating (240 Vac Maximum)▲■	EZM Meter Center Overcurrent Protection Devices	
		EZM Branch Unit Tenant Circuit Breaker Types Available (Branch Unit Amperes max., Number of Poles, Tenant Circuit Breaker Amperes Rating Range)	EZM Main Device with Integral Mounted Main, Remote Mounted Main or without an Upstream Mounted Main (Six Disconnect Rule)
 <p>Figure 1</p>	10 kA	QQ (125 A, 2P, 40–125 A) QQ (225 A, 2P, 40–125 A)★ QB (225 A, 2P or 3P, 70–225 A)	400–2000 A Main Lugs Terminal Box (Tenant Circuit Breakers used as Service Disconnects—6 maximum)
	22 kA	QQ-VH (125 A, 2P, 40–125 A) QQ-VH (225 A, 2P, 40–60 A)★	
	25 kA	QD (225 A, 2P or 3P, 70–225 A)	
	42 kA	QOH (125 A, 2P, 40–125 A) QOH (225 A, 2P, 40–60 A)★	
	65 kA	QG (225 A, 2P or 3P, 70–225 A)	
	100 kA	QJ (225 A, 2P or 3P, 70–225 A) ♦ DJM (400 A, 2P or 3P, 160–400 A) ▼♦	
 <p>Figure 2</p>	10 kA	QQ (125 A, 2P, 40–125 A) QQ (225 A, 2P, 40–125 A)★ QB (225 A, 2P or 3P, 70–225 A) DJM (400 A, 2P or 3P, 160–400 A) ▼	Must be protected by an upstream disconnecting means rated 10 k AIR minimum
	22 kA	QQ-VH (125 A, 2P, 40–125 A) QQ-VH (225 A, 2P, 40–60 A)★ DJM (400 A, 2P or 3P, 160–400 A) ▼	Must be protected by an upstream disconnecting means rated 22 k AIR minimum
	25 kA	QD (225 A, 2P or 3P, 70–225 A) DJM (400 A, 2P or 3P, 160–400 A) ▼	Must be protected by an upstream disconnecting means rated 25 k AIR minimum
	42 kA	QOH (125 A, 2P, 40–125 A) QOH (225 A, 2P, 40–60 A)★ DJM (400 A, 2P or 3P, 160–400 A) ▼	Must be protected by an upstream disconnecting means rated 42 k AIR minimum
	65 kA	QQ-VH (125 A, 2P, 40–125 A) QQ-VH (225 A, 2P, 40–60 A)★ QD (225 A, 2P or 3P, 70–225 A)	Must be protected by a Square D circuit breaker Type LA (400 A max.) or MA (1000 A max.) Rated 42 k AIR minimum
		QG (225 A, 2P or 3P, 70–225 A) DJM (400 A, 2P or 3P, 160–400 A) ▼	Must be protected by an upstream disconnecting means rated 65 k AIR minimum
	100 kA	QQ-VH (125 A, 2P, 40–125 A) QQ-VH (225 A, 2P, 40–60 A)★ QD (225 A, 2P or 3P, 70–225 A)	Must be protected by a Square D circuit breaker Type LH (400 A max.), MH (1000 A max.) or PA (1600 A max.) rated 65 k AIR minimum
		QD (225 A, 2P or 3P, 70–225 A)	Must be protected by a Square D circuit breaker Type MG (800 A max.), PG (1200 A max.) or RG (2000 A max.) rated 65 k AIR minimum
		QJ (225 A, 2P or 3P, 70–225 A) ♦ DJM (400 A, 2P or 3P, 160–400 A) ▼♦	Must be protected by an upstream disconnecting means rated 100 k AIR minimum
		QQ-VH (125 A, 2P, 40–125 A) QQ-VH (225 A, 2P, 40–60 A)★ QD (225 A, 2P only, 70–225 A)	Must be protected by an upstream disconnection means with Class R (600 A max.), or Class T (300 Vac, 800 A maximum) fuses.
		QD (225 A, 3P only, 70–225 A) ♦	Must be protected by an upstream disconnection means with Class J (600 A max.), Class L (1200 A max.), Class R (600 A max.), Class T (300 Vac, 1200 A max.) or Class T (600 Vac, 800 A maximum) fuses, or be protected by a Square D circuit breaker Type MJ (800 A max.), PJ (1200 A max.), PH (1600 A max.) or RJ (2000 A max.) rated 100 k AIR minimum.
	EZ Meter-Pak—Main Circuit Breaker Applications—See Figure 3		
	10 kA	QQ (125 A, 2P, 40–125 A) QQ (225 A, 2P, 40–125 A)★ QB (225 A, 2P or 3P, 70–225 A)	400–2000 A EZM Main Device with Type LH (400 A Max.), MH (1000 A max.), PA (1200 A max.), RG, RJ (1600 A max.) or RJ (2000 A max.) circuit breaker.
	65 kA	QQ-VH (125 A, 2P, 40–125 A) QQ-VH (225 A, 2P, 40–60 A)★ QD (225 A, 2P or 3P, 70–225 A) DJM (400 A, 2P or 3P, 160–400 A) ▼	
	100 kA	QQ-VH (125 A, 2P, 40–125 A) QQ-VH (225 A, 2P, 40–60 A)★ QD (225 A, 2P only, 70–225 A) QD (225 A, 3P only, 70–225 A) ♦ DJM (400 A, 2P or 3P, 160–400 A) ▼♦	1000–1200 A Main Device with catalog number suffix "CBU" supplied with Type MHF circuit breaker.
		QD (225 A, 2P only, 70–225 A) QD (225 A, 3P only, 70–225 A) ♦ DJM (400 A, 2P or 3P, 160–400 A) ▼♦	1600–2000 A EZM Main Device with Type RJ (1600–2000 A) circuit breaker
EZ Meter-Pak—Main Fusible Switch Applications—See Figure 3			
	10 kA	QQ (125 A, 2P, 40–125 A) QQ (225 A, 2P, 40–125 A)★ QB (225 A, 2P or 3P, 70–225 A)	400–800 A EZM Main Device (1Ø or 3Ø) with Class T (300 Vac) fuses installed. 1200 A EZM Main Device (1Ø only) with Class T (300 Vac) fuses installed.
	42 kA	QQ-VH (125 A, 2P, 40–125 A) QQ-VH (225 A, 2P, 40–60 A)★	1200 A EZM Main Device (1Ø only) with Class T (300 Vac) fuses installed.
100 kA	DJM (400 A, 2P, 160–400 A) ▼ QD (225 A, 2P, 70–225 A)		
	100 kA	QQ-VH (125 A, 2P, 40–125 A) QQ-VH (225 A, 2P, 40–60 A)★ QD (225 A, 2P only, 70–225 A) QD (225 A, 3P only, 70–225 A) ♦ DJM (400 A, 2P or 3P, 160–400 A) ▼♦	400–800 A EZM Main Device (1Ø or 3Ø) with Class T (300 Vac) fuses installed.

- ▲ Meter center short circuit current rating is equal to the lowest short circuit current rating given in table for any circuit breaker installed in any meter panelboard in the meter center.
- Short circuit current rating is measured at the LINE SIDE terminals of the integral mounted or remote mounted main providing overcurrent protection for the EZM metering equipment lineup.
- ♦ 3P only tenant circuit breaker(s) are limited to: 100 kA Max. at 208Y/120 Vac or 65 kA Max at 240/120 Vac.
- ★ Requires use of EZM125QOA adapter (order separately). Refer to page 2-15 for pricing.
- ▼ Supplied with factory-installed circuit breaker(s), with an adjustable trip range of 160–400 A.

For three-tier series ratings refer to Data Bulletin 4100DB0301 and Instruction Bulletin 80043-303-22.

Select EZM meter center short circuit current rating from Table 2.12 on page 2-9. Using this table as a reference, make the following selections:

1. Select EZM 1Ø main device from Table 2.13 or 2.14, below, with an equal or higher short circuit rating than the application.
2. Select EZM 1Ø branch units from Tables 2.15, 2.16 or 2.17.
3. Select proper 2P type QO, QO-VH, QOH, QBP-TM, QDP-TM, QGP-TM or QJP-TM branch circuit breakers for use as tenant mains in branch unit from Table 2.24, page 2-15.
4. Select accessories as required from Table 2.25, page 2-15.
5. Dimensions; page 2-16.

Select Main Devices—NEMA 3R Construction

Table 2.13: Main Devices, Overhead/Underground Feed

Ampere Rating	Horizontal Cross Bus Rating and Bus Bar Material	Cat. No.				Width (in.)	Factory-Installed Line Side Lug (Conductors per Phase and Neutral) Wire Size (AWG/kcmil)
Main Circuit Breaker (1Ø Incoming and 1Ø Outgoing)							
	Short Circuit Rating	65kA	\$ Price	100kA	\$ Price		
400	400 A Al	EZM1400CB▲	6180.00	—	—	18.66	(1) 1–600 or (2) 1–250
600	600 A Al	EZM1600CB▲	8573.00	—	—	18.66	(3) 3/0–500
800	800 A Al	EZM1800CB▲	11364.00	—	—	18.66	(3) 3/0–500
1000	1000 A Al	EZM11000CB▲	15767.00	—	—	18.66	(3) 3/0–500
1200	1200 A Al/Cu	EZM11200CB■◆	20366.00	—	—	30.19	(4) 1/0–750 or (8) 1/0–250
1600	1200 A Al/Cu	EZM11600GCBC◆	29904.00	EZM11600JCBC◆	34650.00	30.19	(6) 1/0–750 or (12) 1/0–250
2000	1200 A Al/Cu	—	—	EZM12000CB◆	54518.00	30.19	(6) 1/0–750 or (12) 1/0–250
Main Fusible Switches (1Ø Incoming and 1Ø Outgoing) Requires 300 Vac Class T Fuses (Order Separately)							
	Short Circuit Rating			100kA	\$ Price		
400	400 A Al	—	—	EZM1400FS	3989.00	18.66	(1) 1–600 or (2) 1–250
600	600 A Al	—	—	EZM1600FS	6978.00	18.66	(3) 3/0–500
800	800 A Al	—	—	EZM1800FS	8972.00	18.66	(3) 3/0–500
1200	1200 A Al/Cu	—	—	EZM11200FS◆	11564.00	30.19	(4) 1/0–750 or (8) 1–250
Main Lug Terminal Boxes (1Ø Incoming and 1Ø Outgoing)							
	Short Circuit Rating				\$ Price		
225	800 A Al	—	—	EZM1225TB★	798.00	11.66	(1) 4–300
400	800 A Al	—	—	EZM1400TB□	915.00	17.15	(2) 3/0–500
600	800 A Al	—	—	EZM1600TB□	998.00	17.15	(2) 1/0–750 or (4) 1/0–300
800	800 A Al	—	—	EZM1800TB□	1236.00	18.66	(4) 3/0–500
800	800 A Cu	—	—	EZM1800TBCU◇□	1658.00	24.08	(4) 3/0–500
1600	1200 A Al	—	—	EZM11600TB◆◇□	3588.00	22.48	(6) 3/0–600
2000	1200 A Cu	—	—	EZM12000TB□	9600.00	30.19	6 (Order Lugs Separately)

Table 2.14: Main Devices, Underground Feed Only

Ampere Rating	Horizontal Cross Bus Rating and Bus Bar Material	Cat. No.				Width (in.)	Factory-Installed Lug Landings for use with Crimp-Type Lugs (2-Hole Mounting) Qty. per Phase and Neutral ▼
Main Circuit Breakers (1Ø Incoming and 1Ø Outgoing)▼							
	Short Circuit Rating	65kA	\$ Price	100kA	\$ Price		
400	400 A Al	EZM1400CBU▲	6380.00	—	—	20.46	1 (Order Lugs Separately)
600	600 A Al	EZM1600CBU▲	9171.00	—	—	20.46	2 (Order Lugs Separately)
800	800 A Al	EZM1800CBU▲	11762.00	—	—	20.46	2 (Order Lugs Separately)
1000	1000 A Al/Cu	—	—	EZM11000CBU◆	16547.00	34.19	3 (Order Lugs Separately)
1200	1200 A Al/Cu	—	—	EZM11200CBU◆	21332.00	34.19	3 (Order Lugs Separately)
1600	1200 A Al/Cu	EZM11600GCBCU◆△	31658.00	EZM11600JCBCU◆△	36404.00	30.19	6 (Order Lugs Separately)
2000	1200 A Al/Cu	—	—	EZM12000CBU◆	52755.00	30.19	6 (Order Lugs Separately)
Main Fusible Switches (1Ø Incoming and 1Ø Outgoing)▼ Requires 300 Vac Class T Fuses (Order Separately)							
	Short Circuit Rating			100kA	\$ Price		
400	400 A Al	—	—	EZM1400FSU	6180.00	20.46	1 (Order Lugs Separately)
600	600 A Al	—	—	EZM1600FSU	9369.00	20.46	2 (Order Lugs Separately)
800	800 A Al	—	—	EZM1800FSU	11564.00	20.46	2 (Order Lugs Separately)
1200	1200 A Al/Cu	—	—	EZM11200FSU◆	14154.00	34.19	3 (Order Lugs Separately)
Main Lug Terminal Boxes (1Ø Incoming and 1Ø Outgoing)							
	Short Circuit Rating				\$ Price		
400	800 A Al	—	—	EZM1400TBU□	1544.00	17.16	1 (Order Lugs Separately)
800	800 A Al	—	—	EZM1800TBU□	1827.00	25.16	2 (Order Lugs Separately)
1200	1200 A Al/Cu	—	—	EZM11200TBU◆□	3725.00	33.16	3 (Order Lugs Separately)

- ▲ Available by special order with main circuit breaker supplied with other standard ampere ratings, consult local Field Office (allow 6 weeks for delivery).
- Ampere rating of the PA circuit breaker supplied with this main changed to a LOWER value in the field by ordering a different set of rating columns, refer to Supplementary Digest, Section 3 for listing.
- ◆ Supplied with copper horizontal bus bars and aluminum vertical bus bars.
- ★ 225 A tap box supplied with isolated neutral that cannot be bonded.
- ▼ For mechanical lugs (3/0 AWG–600 kcmil) order kit CMELK4, Price \$91.00. Kit includes 4 lugs only. Multiple kits may be required, consult factory. For crimp-type lugs refer to Anderson Electrical Connector Products Catalog AEC-40R.
- △ Does not meet EUSERC Standards.
- Tap box is suitable for use on LINE or LOAD side of service equipment. Supplied with isolated neutral and provided with neutral bonding kit for use as required. Refer to page 2-9 for appropriate short circuit current ratings.
- ◇ Feed-thru lug kit available, see Accessories, page 2-15.



EZM1800CB



EZM1800CBU

2 METERING EQUIPMENT

Branch Devices—NEMA 3R Construction

Table 2.15: Branch Units—1Ø Incoming and 1Ø Outgoing

System Type	Width (in.)	Number of Meter Sockets	Horizontal Cross Bus Rating and Bus Bar Material	Ring Type 4-Jaw Meter Socketm without Bypass▲		Ringless Type 5-Jaw Meter Socket without Bypass		Ringless Type 5-Jaw Meter Socket with Horn Bypass	
				Cat. No.	\$ Price	Cat. No.	\$ Price	Cat. No.	\$ Price
125 A Maximum (Order Type QO, QO-VH or QOH Circuit Breakers Separately) ■									
1Ø3W 120/240 Vac 2P Branch Circuit Breakers	12.25	3	800 A Al	EZM113125 ◆	1436.00	EZMR113125 ◆	1436.00	EZMH113125 ◆	1755.00
			1200 A Cu	EZM113125CUX	2282.00	EZMR113125CUX	2282.00	EZMH113125CUX	2282.00
		4	800 A Al	EZM114125 ◆	1914.00	EZMR114125 ◆	1914.00	EZMH114125 ◆	2153.00
			1200 A Cu	EZM114125CUX	3043.00	EZMR114125CUX	3043.00	EZMH114125CUX	3043.00
		5	800 A Al	EZM115125 ◆	2354.00	EZMR115125 ◆	2354.00	EZMH115125 ◆	2910.00
			1200 A Cu	EZM115125CUX	3742.00	EZMR115125CUX	3742.00	EZMH115125CUX	3742.00
		6	800 A Al	EZM116125 ◆	2792.00	EZMR116125 ◆	2792.00	EZMH116125 ◆	3549.00
			1200 A Cu	EZM116125CUX	4438.00	EZMR116125CUX	4438.00	EZMH116125CUX	4438.00
225 A Maximum Branch Units (Order Type QBP-TM, QDP-TM, QGP-TM or QJP-TM Circuit Breakers Separately) ★									
1Ø3W 120/240 Vac Circuit Breakers	17.38	2	800 A Al	EZM112225 ◆	2273.00	EZMR112225 ◆	2273.00	EZMH112225 ◆	2474.00
			1200 A Cu	EZM112225CUX	3615.00	EZMR112225CUX	3615.00	EZMH112225CUX	3615.00
		3	800 A Al	EZM113225 ◆	2792.00	EZMR113225 ◆	2792.00	EZMH113225 ◆	3069.00
			1200 A Cu	EZM113225CUX	4438.00	EZMR113225CUX	4438.00	EZMH113225CUX	4438.00
		4	800 A Al	EZM114225 ◆	3588.00	EZMR114225 ◆	3588.00	EZMH114225 ◆	4028.00
			1200 A Cu	EZM114225CUX	5705.00	EZMR114225CUX	5705.00	EZMH114225CUX	5705.00
		5	1200 A Al/Cu	EZM115225	4715.00	EZMR115225	4715.00	EZMH115225	4715.00
			1200 A Cu	EZM115225CU	7090.00	EZMR115225CU	7090.00	EZMH115225CU	7090.00

- ▲ Snap-on aluminum sealing rings supplied as standard.
- Supplied with removable drip hood and equipped with an indoor top endwall with knockouts provided.
- ◆ For 1200 A main cross bus add suffix "X" to catalog number (Example: EZM314125X). Add 3% adder to list per device. Allow 6 weeks for delivery.
- ★ Type QO, QO-VH and QOH branch circuit breakers (40–60 A) may be installed with use of EZM125QOA adapter kits, refer to page 2-15.

Table 2.16: Branch Units—225 A Maximum Commercial (Order Type QBP-TM, QDP-TM, QGP-TM or QJP-TM Circuit Breakers Separately, see page 2-15) ▼

System Type	Number of Meter Sockets	Horizontal Cross Bus Rating and Bus Bar Material	Ringless Type 5-Jaw Meter Socket with Lever Bypass and Jaw Release△			Ring Type 5-Jaw Meter Socket with Test Block Bypass. Meets EUSERC Requirements		
			Cat. No.	Width (in.)	\$ Price	Cat. No.	Width (in.)	\$ Price
1Ø3W 120/240 Vac 2P Branch Circuit Breakers	1	1200 A Al/Cu	EZML111225	19.44	2453.00	EZMT111225 □	22.42	3387.00
		1200 A Cu	EZML111225CU		3901.00	—		—
		1200 A Al/Cu	EZML111225D ◆		2576.00	—		—
		1200 A Al/Cu	EZML111225D ◆		2576.00	—		—
	2	1200 A Al/Cu	EZML112225	19.44	4466.00	EZMT112225 □	22.42	6143.00
		1200 A Cu	EZML112225CU		7101.00	—		—
		1200 A Al/Cu	EZML112225D ◆		4689.00	—		—
		1200 A Al/Cu	EZML112225D ◆		4689.00	—		—
	3	1200 A Al/Cu	EZML113225	19.44	6579.00	EZMT113225 □ ★	22.42	9215.00
		1200 A Cu	EZML113225CU		10461.00	—		—
		1200 A Al/Cu	EZML113225D ◆		6908.00	—		—
		1200 A Al/Cu	EZML113225D ◆		6908.00	—		—
	4	1200 A Al/Cu	EZML114225	19.44	8813.00	—	—	—
		1200 A Cu	EZML114225CU		14013.00	—		—
		1200 A Al/Cu	EZML114225D ◆		9254.00	—		—
		1200 A Al/Cu	EZML114225D ◆		9254.00	—		—

- ▼ 2P Type QO (40–125 A, 10 kA max. meter center SCCR) or QO-VH and QO-H (40–60 A, 100 kA max. meter center SCCR) may be installed using EZM125QOA adapter kit, refer to page 2-15.
- △ Supplied with Class 320 lever bypass meter socket. Utilizes anti-inversion clip kit, catalog number MMLRK, if required, refer to page 2-15.
- Supplied with bondable neutral, suitable for use as service equipment. Use main lugs tapbox type EZM-TBU for Six Disconnect Rule applications to feed this device. Supplied with copper horizontal bus bars and aluminum vertical bus bars.
- ◆ Supplied with removable drip hood and equipped with an indoor top endwall with knockouts provided.
- ★ Does not meet EUSERC 48 in. minimum / 75 in. maximum meter height requirements for outdoor installations. The bottom meter socket is 37 inches above ground when the device is mounted with the top meter socket at 75 inches above ground. EUSERC indoor requirements are 36 in. minimum / 75 in. maximum.

Table 2.17: Branch Units—400 A Maximum Commercial

System Type	Number of Meter Sockets	Main Cross Bus Rating and Bus Bar Material	Ringless Type 5-Jaw Meter Socket with Lever Bypass and Jaw Release. Includes Factory-Installed 400 A Type DJM Circuit Breaker ▼ ◆			Ringless Type K Bolt-on 4-Jaw Meter Socket with Manual Bypass. Includes Factory-Installed 400 A Type DJM Circuit Breaker ▼		
			Cat. No.	Width (in.)	\$ Price	Cat. No.	Width (in.)	\$ Price
1Ø3W 120/240 Vac 2P Branch Circuit Breakers	1	1200 A Cu	EZML111400	23.21	5981.00	EZMK111400	27.56	7424.00
	2	1200 A Cu	EZML112400	23.21	11963.00	EZMK112400	27.56	14531.00

- ▼ DJM circuit breaker has adjustable trip settings from 160–400 A. Use seal kit 29375, if required. DJM circuit breaker terminal lug kit 32508 factory-installed and accommodates (1) 2 AWG–500 kcmil Al or (1) 2 AWG–600 kcmil Cu per phase. Alternate lug kit 32510 for DJM circuit breaker is available, see Accessories, page 2-15. Additional field-installed DJ circuit breaker accessories are available, see page 7-35.
- ◆ Supplied with Class 320 lever bypass meter socket. Utilizes anti-inversion clip kit MMLRK, if required, refer to page 2-15.



EZMH114125



EZML113225



EZMT111225

METERING EQUIPMENT
2

**3Ø4W 208Y/120 Vac or 240/120 Vac Delta EZ Meter-Pak Meter Centers—
3Ø Indoor/Rainproof, UL Listed**

Select EZM meter center short circuit current rating from Table 2.12 on page 2-9. Using this table as a reference, make the following selections:

1. Select 3Ø EZM main device below with an equal or higher short circuit rating than the application from Tables 2.18 and 2.19.
2. Select EZM 3Ø branch units from Tables 2.20, 2.21 and 2.22.
3. Select proper 2P type QO, QO-VH, QOH, QBP-TM, QDP-TM, QGP-TM or QJP-TM or 3P QBP-TM, QDP-TM, QGP-TM or QJP-TM branch circuit breakers for use as tenant mains in branch unit; from Table 2.24.
4. Select accessories as required, from Table 2.25.
5. Dimensions, page 2-16.

Main Devices—NEMA 3R Construction

Table 2.18: Main Device, Overhead/Underground Feed

Ampere Rating	Horizontal Cross Bus Rating and Bus Bar Material	Cat. No.				Width (in.)	Factory-Installed Line Side Lug (Conductors per Phase and Neutral) Wire Size (AWG-kcmil)
Main Circuit Breakers (3Ø Incoming and 3Ø Outgoing)							
65 kA Short Circuit Current Rating (400–1600 A Max.), 100 kA Short Circuit Current Rating (2000 A Max.)							
Short Circuit Rating		65kA	\$Price	100kA	\$Price		
400	400 A Al	EZM3400CB▲	6620.00	—	—	18.66	(1) 1–600 or (2) 1–250
600	600 A Al	EZM3600CB▲	10247.00	—	—	18.66	(3) 3/0–500
800	800 A Al	EZM3800CB▲	13650.00	—	—	18.66	(3) 3/0–500
1000	1000 A Al	EZM31000CB▲	17027.00	—	—	18.66	(3) 3/0–500
1200	1200 A Al/Cu	EZM31200CB■◆	23127.00	—	—	30.19	(4) 1/0–750 or (8) 1/0–250
1600	1200 A Al/Cu	EZM31600GCBC◆	35288.00	EZM31600JCBC◆	40034.00	30.19	(6) 1/0–750 or (12) 1/0–250
2000	1200 A Al/Cu	—	—	EZM32000CB◆	57518.00	30.19	(6) 1/0–750 or (12) 1/0–250
Main Fusible Switches (3Ø Incoming and 3Ø Outgoing) Requires 300 Vac Class T Fuses (Order Separately)							
Short Circuit Rating				100kA	\$Price		
400	400 A Al	—	—	EZM3400FS	4466.00	18.66	(1) 1–600 or (2) 1–250
600	600 A Al	—	—	EZM3600FS	8373.00	18.66	(3) 3/0–500
800	800 A Al	—	—	EZM3800FS	11565.00	18.66	(3) 3/0–500
Main Lug Terminal Boxes (3Ø Incoming and 3Ø Outgoing)							
Short Circuit Rating					\$Price		
225	800 A Al	—	—	EZM3225TB★	1013.00	11.66	(1) 4–300
400	800 A Al	—	—	EZM3400TB□	1113.00	17.15	(2) 3/0–500
600	800 A Al	—	—	EZM3600TB□	1196.00	17.15	(2) 1/0–750 or (4) 1/0–300
800	800 A Al	—	—	EZM3800TB□	1442.00	18.66	(4) 3/0–500
800	800 A Cu	—	—	EZM3800TBCU◇□	3545.00	24.08	(4) 3/0–500
1600	1200 A Al	—	—	EZM31600TB◆◇□	4028.00	22.48	(6) 3/0–600
2000	1200 A Cu	—	—	EZM32000TB□	11820.00	30.19	6 (Order Lugs Separately)

Table 2.19: Main Device, Underground Feed Only

Ampere Rating	Horizontal Cross Bus Rating and Bus Bar Material	Cat. No.				Width (in.)	Factory-Installed Lug Landings For use with Crimp-Type Lugs (2-Hole Mounting) Qty. per Phase and Neutral▼
Main Circuit Breakers (3Ø Incoming and 3Ø Outgoing)							
Short Circuit Rating		65kA	\$ Price	100kA	\$Price		
400	400 A Al	EZM3400CBU▲	7178.00	—	—	20.46	1 (Order Lugs Separately)
600	600 A Al	EZM3600CBU▲	10806.00	—	—	26.19	2 (Order Lugs Separately)
800	800 A Al	EZM3800CBU▲	14115.00	—	—	26.19	2 (Order Lugs Separately)
1000	1000 A Al/Cu	—	—	EZM31000CBU◆	17943.00	34.19	3 (Order Lugs Separately)
1200	1200 A Al/Cu	—	—	EZM31200CBU◆	24323.00	34.19	3 (Order Lugs Separately)
1600	1200 A Al/Cu	EZM31600GCBCU◆△	37170.00	EZM31600JCBCU◆△	41916.00	30.19	6 (Order Lugs Separately)
2000	1200 A Al/Cu	—	—	EZM32000CBU◆△	57255.00	30.19	6 (Order Lugs Separately)
Main Fusible Switches (3Ø Incoming and 3Ø Outgoing) Requires 300 Vac Class T Fuses (Order Separately)							
Short Circuit Rating				100kA	\$Price		
400	400 A Al	—	—	EZM3400FSU	6978.00	20.46	1 (Order Lugs Separately)
600	600 A Al	—	—	EZM3600FSU	11364.00	26.19	2 (Order Lugs Separately)
800	800 A Al	—	—	EZM3800FSU	15152.00	26.19	2 (Order Lugs Separately)
Main Lugs Terminal Boxes (3Ø Incoming and 3Ø Outgoing)							
Short Circuit Rating					\$Price		
400	400 A Al	—	—	EZM3400TBU□	1838.00	17.16	1 (Order Lugs Separately)
800	800 A Al	—	—	EZM3800TBU□	2100.00	25.16	2 (Order Lugs Separately)
1200	1200 A Al/Cu	—	—	EZM31200TBU◆□	4463.00	33.16	3 (Order Lugs Separately)

- ▲ Available by special order with main circuit breaker supplied with other standard ampere ratings, consult your nearest Field Sales Office (allow 6 weeks for delivery).
- Ampere rating of the PA circuit breaker supplied with this main can be changed to a LOWER value in the field by ordering a different set of rating columns, refer to Supplementary Digest, Section 3, for listing.
- ◆ Supplied with copper horizontal bus bars and aluminum vertical bus bars.
- ★ 225 A tap box supplied with isolated neutral that cannot be bonded.
- ▼ For mechanical lugs (3/0 AWG–600 kcmil) order kit CME4LK4, Price \$91.00. Kit includes 4 lugs only. Multiple kits may be required, consult factory. For crimp-type lugs refer to Anderson Electrical Connector Products Catalog AEC-40R.
- △ Does not meet EUSERC requirements.
- Tap box is suitable for use on LINE or LOAD side of service equipment. Supplied with isolated neutral and provided with neutral bonding kit for use as required. Refer to page 2-9 for appropriate short circuit current ratings.
- ◇ Feed-thru lug kit available, see Accessories, page 2-15.

2 METERING EQUIPMENT



EZM3600FS



EZM31600CB

Branch Devices—NEMA 3R Construction

Table 2.20: Branch Units—3Ø Incoming and 1Ø Outgoing

System Type	Width (in.)	Number of Meter Sockets	Horizontal Cross Bus Rating [▲] and Bus Bar Material	Ring Type 5-Jaw Meter Socket without Bypass [■]		Ringless Type 5-Jaw Meter Socket without Bypass		Ringless Type 5-Jaw Meter Socket with Horn Bypass	
				Cat. No.	\$ Price	Cat. No.	\$ Price	Cat. No.	\$ Price
125 A Maximum (Order Type QO, QO-VH or QOH Circuit Breakers Separately) ♦ ★									
3Ø4W 208Y/120 Vac 5-Jaw-Meter Socket 2P Branch Circuit Breakers	12.25	3	800 A Al	EZM313125▲	1554.00	EZMR313125▲	1554.00	EZMH313125▲	1875.00
			800 A Cu	EZM313125M10▼	4253.00	—	—	—	
			1200 A Cu	EZM313125CUX	2473.00	EZMR313125CUX	2473.00	EZMH313125CUX	2980.00
		4	800 A Al	EZM314125▲	2034.00	EZMR314125▲	2039.00	EZMH314125▲	2474.00
			800 A Cu	EZM314125M10▼	5670.00	—	—	—	
			1200 A Cu	EZM314125CUX	3234.00	EZMR314125CUX	3234.00	EZMH314125CUX	3933.00
		5	800 A Al	EZM315125▲	2592.00	EZMR315125▲	2592.00	EZMH315125▲	3111.00
			800 A Cu	EZM315125M10▼	7088.00	—	—	—	
			1200 A Cu	EZM315125CUX	4121.00	EZMR315125CUX	4121.00	EZMH315125CUX	4947.00
		6	800 A Al	EZM316125▲	2991.00	EZMR316125▲	2991.00	EZMH316125▲	3788.00
			1200 A Cu	EZM316125CUX	4756.00	EZMR316125CUX	4756.00	EZMH316125CUX	6023.00



EZML313225



EZMT311225

225 A Maximum (Order Type QBP-TM, QDP-TM, QGP-TM or QJP-TM Circuit Breakers Separately) ♦ △									
3Ø4W 208Y/120 Vac 5-Jaw-Meter Socket 2P Branch Circuit Breakers	17.38	2	800 A Al	EZM312225▲	2273.00	EZMR312225▲	2273.00	EZMH312225▲	2474.00
			1200 A Cu	EZM312225CUX	3615.00	EZMR312225CUX	3615.00	EZMH312225CUX	2473.00
		3	800 A Al	EZM313225▲	2792.00	EZMR313225▲	2792.00	EZMH313225▲	3111.00
			1200 A Cu	EZM313225CUX	4438.00	EZMR313225CUX	4438.00	EZMH313225CUX	4947.00
		4	800 A Al	EZM314225▲	3749.00	EZMR314225▲	3749.00	EZMH314225▲	4148.00
			1200 A Cu	EZM314225CUX	5961.00	EZMR314225CUX	5961.00	EZMH314225CUX	6595.00
		5	1200 A Al/Cu	EZM315225	4920.00	EZMR315225	5457.00	EZMH315225	5718.00
			1200 A Cu	EZM315225CU	7409.00	EZMR315225CU	7409.00	EZMH315225CU	8154.00

- ▲ For 1200 A main cross bus, add suffix "X" to catalog number. Example: EZMR313125X. Add 3% adder to list per device. Allow 6 weeks for delivery.
- Snap-On aluminum sealing rings supplied as standard.
- ♦ For 240/120 Vac Delta Systems add Suffix "CA" to catalog number (Example: EZM314125CA). All meter sockets are phased A and C only. Price remains the same as the base catalog number. Order only branch units, not stocked in PDS (6-week delivery).
- ★ Supplied with removable drip hood and equipped with an indoor top endwall with knockouts provided.
- ▼ Distance between meter sockets as measured from centerline to centerline is 10 inches.
- △ 2P Type QO (40–125 A, 10 kA max. meter center SCCR) or QO-VH and QO-H (40–60 A, 100 kA max. meter center SCCR) may be installed using EZM125QOA adapter kit, refer to page 2-15.

Table 2.21: Branch Units—225 A Maximum Commercial

System Type	Number of Meter Sockets	Horizontal Cross Bus Rating and Bus Bar Material	Ringless Type Meter Socket without Bypass			Ringless Type Meter Socket with Lever Bypass and Jaw Release			Ring Type Meter Socket with Test Block Bypass. Meets EUSERC Requirements		
			Cat. No.	Width (in.)	\$ Price	Cat. No.	Width (in.)	\$ Price	Cat. No.	Width (in.)	\$ Price

3Ø Incoming and 1Ø Outgoing □											
(Order Type QBP-TM, QDP-TM, QGP-TM or QJP-TM circuit breakers separately) ◇											
3Ø4W 208Y/120 Vac 5-Jaw Meter Sockets 2P Branch Circuit Breakers	1	1200 A Al/Cu	—	—	—	—	—	—	EZMT311225★	22.42	3545.00
		1200 A Al/Cu	—	—	—	EZML312225	19.44	4266.00	EZMT312225★	22.42	6695.00
	2	1200 A Al/Cu	—	—	—	EZML312225CU	19.44	6785.00	—	—	—
		1200 A Al/Cu	—	—	—	EZML312225D▼	—	4479.00	—	—	—
	3	1200 A Al/Cu	—	—	—	EZML313225	19.44	6420.00	EZMT313225★◇	22.42	10041.00
		1200 A Al/Cu	—	—	—	EZML313225CU	19.44	10208.00	—	—	—
	4	1200 A Al/Cu	—	—	—	EZML313225D▼	—	6741.00	—	—	—
		1200 A Al/Cu	—	—	—	EZML314225	19.44	8732.00	—	—	—
4	1200 A Al/Cu	—	—	—	EZML314225CU	19.44	13884.00	—	—	—	
	1200 A Al/Cu	—	—	—	EZML314225D▼	—	9168.00	—	—	—	

3Ø Incoming and 3Ø Outgoing (Order QBP-TM, QDP-TM, QGP-TM or QJP-TM circuit breakers separately, see page 2-15)											
3Ø4W 240/120 Vac Delta or 208Y/120 Vac 7-Jaw Meter Socket 3P Branch Circuit Breakers	1	1200 A Al/Cu	—	—	—	EZML331225	19.44	2792.00	EZMT331225★	22.42	3938.00
		1200 A Cu	—	—	—	EZML331225CU	19.44	4438.00	—	—	—
		1200 A Al/Cu	—	—	—	EZML331225D▼	—	2931.00	—	—	—
	2	1200 A Al/Cu	EZMR332225	19.44	4686.00	EZML332225	19.44	5105.00	EZMT332225★	22.42	6957.00
		1200 A Cu	EZMR332225CU	19.44	7451.00	EZML332225CU	19.44	8117.00	—	—	—
		1200 A Al/Cu	—	—	—	EZML332225D▼	—	5360.00	—	—	—
	3	1200 A Al/Cu	EZMR333225	19.44	7337.00	EZML333225	19.44	7794.00	EZMT333225★◇	22.42	10304.00
		1200 A Cu	EZMR333225CU	19.44	11664.00	EZML333225CU	19.44	12395.00	—	—	—
		1200 A Al/Cu	—	—	—	EZML333225D▼	—	8184.00	—	—	—
	4	1200 A Al/Cu	EZMR334225	19.44	10169.00	EZML334225	19.44	10667.00	—	—	—
		1200 A Cu	EZMR334225CU	19.44	16167.00	EZML334225CU	19.44	16959.00	—	—	—
		1200 A Al/Cu	—	—	—	EZML334225D▼	—	11214.00	—	—	—

- For 240/120 Vac Delta Systems add Suffix "CA" to catalog number (Example: EZM314125CA). All meter sockets are phased A and C only. Price remains the same as the base catalog number. Order only branch units, not stocked in PDS (6-week delivery).
- ◇ 2P Type QO (40–125 A, 10 kA max. meter center SCCR) or QO-VH and QO-H (40–60 A, 100 kA max. meter center SCCR) may be installed using EZM125QOA adapter kit, refer to page 2-15.
- ★ Supplied with bondable neutral, suitable for use as service equipment. Use main lugs tap box type EZM-TBU for Six Disconnect Rule applications to feed this device. Supplied with copper horizontal bus bars and aluminum vertical bus bars.
- ▼ Supplied with removable drip hood and equipped with an indoor top endwall with knockouts provided.
- ◇ Does not meet EUSERC 48 in. minimum / 75 in. maximum meter height requirements for outdoor installations. The bottom meter socket is 37 inches above ground when the device is mounted with the top meter socket at 75 inches above ground. EUSERC indoor requirements are 36 in. minimum / 75 in. maximum.

400 A maximum Commercial Branch Units Page 2-14.

METERING EQUIPMENT 2

Branch Devices—NEMA 3R Construction (Continued)

Table 2.22: Branch Units—400 A Maximum Commercial

System Type	Number of Meter Sockets	Horizontal Cross Bus Rating	Ringless Type Meter Socket with Lever Bypass and Jaw Release—Includes Factory-Installed 400 A Type DJM Circuit Breaker. ▲■			Ringless Type K Bolt-on Meter Socket with Manual Bypass—Includes Factory-Installed 400 A Type DJM Circuit Breaker. ▲		
			Cat. No.	Width (in.)	\$ Price	Cat. No.	Width (in.)	\$ Price
3Ø Incoming and 1Ø Outgoing ♦								
3Ø4W 208Y/120 Vac 5-Jaw Meter Socket 2P Branch Circuit Breakers	1	1200 A Cu	EZML311400	23.21	5981.00	EZMK311400	27.56	8924.00
	2	1200 A Cu	EZML312400	23.21	11963.00	EZMK312400	27.56	17534.00
3Ø Incoming and 3Ø Outgoing								
3Ø4W 240/120 Vac Delta or 208Y/120 Vac 7-Jaw Meter Socket 3P Branch Circuit Breakers	1	1200 A Cu	EZML331400	23.21	6978.00	EZMK331400	27.56	10515.00
	2	1200 A Cu	EZML332400	23.21	13956.00	EZMK332400	27.56	20715.00

- ▲ DJM circuit breaker has adjustable trip settings from 160–400 A. If required, order seal kit, catalog number 29375. DJM circuit breaker terminal lug kit 32508 factory-installed and accommodates (1) 2 AWG–500 kcmil Al or (1) 2 AWG–600 kcmil Cu per phase. Alternate lug kit 32510 for DJM circuit breaker is available, see Accessories, page 2-15. Additional field-installed DB circuit breaker accessories are available, see page 7-35.
- Supplied with Class 320 lever bypass meter socket. Use anti-inversion clip kit, catalog number MMLRK, if required. Order from page 2-15.
- ♦ For 240/120 Vac Delta Systems add Suffix "CA" to catalog number (Example: EZML312400CA). All meter sockets are phased A and C only. Price remains the same as the base catalog number. "Order only" branch units, not stocked in PDS (4–6 week delivery). Order point Lexington.

EZM Main with Busway Tap

EZ Meter-Pak metering equipment is available for use in high rise applications for connection to 800–5000 A I-Line® or I-Line II plug-in busway installed as a vertical riser. Three phase only EZM main devices in the form of a main circuit breaker or main fusible switch are available with an integral busway tap extending from the right or left side of the main device and phased to align with the busway for either neutral front or neutral back installations.

Busway Mains, 3Ø only (Indoor only) ordering instructions:

- Step 1: Determine height to center line of busway plug-in opening, check local utility requirements for minimum and maximum meter socket heights.
- Step 2: Determine side of EZM main section for busway tap to extend from (busway tap is an integral part of the main and extends to the left or right on the EZM device as viewed from the front).
- Step 3: Check phasing of busway riser to insure that it matches phasing of busway tap on main section (indicated as neutral front or neutral back as viewed from the front).
- Step 4: Select Cat. No. from tables below.
- Step 5: Busway main devices are build to order specials and require 4 to 6 weeks for delivery (order point Lexington).

Table 2.23: EZM Mains with Busway Tap (Three Phase Only—Note positioning left or right below)

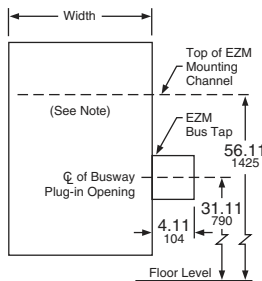
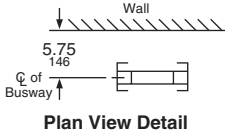
Ampere Rating	Width (in.)	Horizontal Cross Bus Rating	Main Circuit Breaker with Busway Tap ★			Main Fusible Switch with Busway Tap ▼		
			Neutral Front	Neutral Back	\$ Price	Neutral Front	Neutral Back	\$ Price
Busway to RIGHT of metering equipment lineup								
400	18.66	400 A Al	EZM3400CBNFBTR	EZM3400CBNBBTR	8886.00	EZM3400FSNFBTR	EZM3400FSNBBTR	6732.00
600	18.66	600 A Al	EZM3600CBNFBTR	EZM3600CBNBBTR	12513.00	EZM3600FSNFBTR	EZM3600FSNBBTR	10640.00
800	18.66	800 A Al	EZM3800CBNFBTR	EZM3800CBNBBTR	15744.00	EZM3800FSNFBTR	EZM3800FSNBBTR	13830.00
1000	18.66	1000 A Al	EZM31000CBNFBTR□	EZM31000CBNBBTR□	19292.00	—	—	—
1200	30.19	1200 A Al/Cu	EZM31200CBNFBTR△□	EZM31200CBNBBTR△□	25394.00	—	—	—
Busway to LEFT of metering equipment lineup								
400	18.66	400 A Al	EZM3400CBNFBTL	EZM3400CBNBBTL	8886.00	EZM3400FSNFBTL	EZM3400FSNBBTL	6732.00
600	18.66	600 A Al	EZM3600CBNFBTL	EZM3600CBNBBTL	12513.00	EZM3600FSNFBTL	EZM3600FSNBBTL	10640.00
800	18.66	800 A Al	EZM3800CBNFBTL	EZM3800CBNBBTL	15744.00	EZM3800FSNFBTL	EZM3800FSNBBTL	13830.00
1000	18.66	1000 A Al	EZM31000CBNFBTL□	EZM31000CBNBBTL□	19292.00	—	—	—
1200	30.19	1200 A Al/Cu	EZM31200CBNFBTL△□	EZM31200CBNBBTL△□	25394.00	—	—	—

- ★ Has a maximum 65 kA short circuit current rating.
- ▼ Has a 100 kA short circuit current rating. Requires Class T (300 Vac) fuses, order separately.
- △ Supplied with copper horizontal bus bars and aluminum vertical bus bars.
- Requires use of branch units supplied with 1200 A horizontal cross bus.

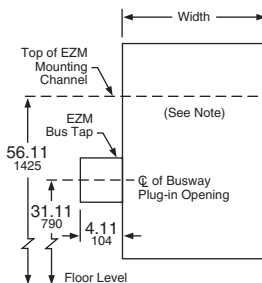
Note: Dimensions shown will position the centerline of top meter socket of a 125 A, 5-Gang or 6-Gang branch unit at 72" above floor level. Check with utility to meet local requirements.



EZMK311400



EZM3800CBNFBTR



EZM3800FSNBBTL

2 METERING EQUIPMENT

EZ Meter-Pak® Meter Centers and Accessories

Table 2.24: Tenant Circuit Breakers

Poles	Ampere Rating	10 k AIR		22 k AIR		42 k AIR		100 k AIR	
		Cat. No.	\$ Price	Cat. No.	\$ Price	Cat. No.	\$ Price	Cat. No.	\$ Price
125 A Max. EZM Branch Unit Tenant Circuit Breakers									
2	40	QO240	67.00	QO240VH	146.00	QOH240	317.00	—	—
	50	QO250	67.00	QO250VH	146.00	QOH250	317.00	—	—
	60	QO260	67.00	QO260VH	146.00	QOH260	317.00	—	—
	70	QO270	134.00	QO270VH	224.00	QOH270	528.00	—	—
	80	QO280	189.00	QO280VH	315.00	QOH280	651.00	—	—
	90	QO290	189.00	QO290VH	315.00	QOH290	651.00	—	—
	100	QO2100	189.00	QO2100VH	315.00	QOH2100	651.00	—	—
	110	QO2110	428.00	QO2110VH	1034.00	QOH2110	1389.00	—	—
	125	QO2125	428.00	QO2125VH	1034.00	QOH2125	1389.00	—	—
225 A Max. EZM Branch Unit Tenant Circuit Breakers									
Poles	Ampere Rating	10 k AIR		25 k AIR		65 k AIR		100 k AIR	
		Cat. No.	\$ Price	Cat. No.	\$ Price	Cat. No.	\$ Price	Cat. No.	\$ Price
2	40	QO240▲	67.00	QO240VH■▲	146.00	QOH240◆▲	317.00	—	—
	50	QO250▲	67.00	QO250VH■▲	146.00	QOH250◆▲	317.00	—	—
	60	QO260▲	67.00	QO260VH■▲	146.00	QOH260◆▲	317.00	—	—
	70	QBP22070TM	474.00	QDP22070TM	1143.00	QGP22070TM	1521.00	QJP22070TM	1890.00
	80	QBP22080TM	474.00	QDP22080TM	1143.00	QGP22080TM	1521.00	QJP22080TM	1890.00
	90	QBP22090TM	474.00	QDP22090TM	1143.00	QGP22090TM	1521.00	QJP22090TM	1890.00
	100	QBP22100TM	474.00	QDP22100TM	1143.00	QGP22100TM	1521.00	QJP22100TM	1890.00
	110	QBP22110TM	474.00	QDP22110TM	1143.00	QGP22110TM	1521.00	QJP22110TM	1890.00
	125	QBP22125TM	474.00	QDP22125TM	1143.00	QGP22125TM	1521.00	QJP22125TM	1890.00
	150	QBP22150TM	474.00	QDP22150TM	1143.00	QGP22150TM	1521.00	QJP22150TM	1890.00
	175	QBP22175TM	474.00	QDP22175TM	1143.00	QGP22175TM	1521.00	QJP22175TM	1890.00
	200	QBP22200TM	474.00	QDP22200TM	1143.00	QGP22200TM	1521.00	QJP22200TM	1890.00
225	QBP22225TM	474.00	QDP22225TM	1143.00	QGP22225TM	1521.00	QJP22225TM	1890.00	
3	70	QBP32070TM	1248.00	QDP32070TM	1784.00	QGP32070TM	2442.00	QJP32070TM★	2796.00
	80	QBP32080TM	1248.00	QDP32080TM	1784.00	QGP32080TM	2442.00	QJP32080TM★	2796.00
	90	QBP32090TM	1248.00	QDP32090TM	1784.00	QGP32090TM	2442.00	QJP32090TM★	2796.00
	100	QBP32100TM	1248.00	QDP32100TM	1784.00	QGP32100TM	2442.00	QJP32100TM★	2796.00
	110	QBP32110TM	1248.00	QDP32110TM	1784.00	QGP32110TM	2442.00	QJP32110TM★	2796.00
	125	QBP32125TM	1248.00	QDP32125TM	1784.00	QGP32125TM	2442.00	QJP32125TM★	2796.00
	150	QBP32150TM	1248.00	QDP32150TM	1784.00	QGP32150TM	2442.00	QJP32150TM★	2796.00
	175	QBP32175TM	1248.00	QDP32175TM	1784.00	QGP32175TM	2442.00	QJP32175TM★	2796.00
200	QBP32200TM	1248.00	QDP32200TM	1784.00	QGP32200TM	2442.00	QJP32200TM★	2796.00	
225	QBP32225TM	1248.00	QDP32225TM	1784.00	QGP32225TM	2442.00	QJP32225TM★	2796.00	

▲ Must use EZM125QOA adapter. ◆ QOH tenant circuit breaker is rated 42 k AIR max.
■ QO-VH tenant circuit breaker is rated 22 k AIR max. ★ 3-pole QJP tenant circuit breaker is rated 65 k AIR max. at 240/120 Vac, 3Ø4W High Leg Delta, or 100 k AIR max. at 208Y/120 Vac, 3Ø4W.



QO2100VH
2P, Plug-on Type
Circuit Breaker



QDP22200TM

METERING EQUIPMENT

Accessories

Table 2.25: Accessories

Accessory	Description	Cat. No.	\$ Price
1200 A Bus Extension (Indoor/Outdoor Cu bus)	1Ø3W Bus Extension (6 in. wide) 1Ø3W Bus Extension (12 in. wide) 3Ø4W Bus Extension (6 in. wide) 3Ø4W Bus Extension (12 in. wide)	EZM1EXT6 EZM1EXT EZM3EXT6 EZM3EXT	767.00 767.00 966.00 966.00
1200 A Bussed Corner Sections (Indoor Cu bus only)	1Ø3W Inside Corner (14.75 in. wide) 1Ø3W Outside Corner (6.20 in. wide) 3Ø4W Inside Corner (14.75 in. wide) 3Ø4W Outside Corner (6.20 in. wide)	EZM1CORNER EZM1ELBOW EZM3CORNER EZM3ELBOW	1788.00 1788.00 2217.00 2217.00
1200 A Transition Sections—Old to New (10.7 in. wide Cu bus)	Add right of old style 1Ø EZM lineup Add right of old style 3Ø EZM lineup Add left of old style 1Ø EZM lineup Add left of old style 3Ø EZM lineup	EZM1TRANR EZM3TRANR EZM1TRANL EZM3TRANL	237.00 252.00 315.00 332.00
Mounting Channel	72" long	EZM72MC	63.00
Secondary Surge Arrester Mounting kit	For use with 1 or 2-SDSA1175 or 1-SDSA3650 (order surge arrester separately)	MMSAMK▼	80.00
Stud Kit for EZM-TB 400–600 A terminal box	Includes (2) 1/2 in.-13 studs per pad and mounting hardware. Four pads per kit. With suffix TBCU only.	EZMSK2	246.00
Al/Cu Lug Kits (Each kit includes three, 2-barrel lugs.)	(1) 1/0–600 kcmil or (2) 1/0–250 kcmil per lug (2) 3/0–500 kcmil per lug (2) 2–600 kcmil per lug	MMLK250 MMLK500 MMLK600	150.00 200.00 233.00
Feed-Thru for EZM-TBCU 800 A Terminal Box	(4) 750 kcmil Al/Cu lugs per phase and neutral. Al wire 600 A max. Cu wire 800 A max.	EZM600FTLK3	480.00
Feed-Thru for EZM-TB 1600 A Terminal Box	(24) additional lugs, 600 kcmil Al/Cu, (6) per phase and neutral.	EZM1600FTLK3	915.00
Fifth jaw Kit	1 per kit	5J▲	18.30
Horn Bypass Kit	Use with Type EZMR 1Ø meter socket only	MMHB	16.70
Slider Type Manual Circuit Closer	For (1) 125–225 A ring-type socket only—indoor/outdoor	MM200MB◻◻	171.00
Anti-inversion Clip	Rejects 100 A and 200 A watt-hour meters in Class 320 meter sockets in Type EZML branch units.	MMLRK	12.00
QO Adapter for bolt-on Q-frame tenant circuit breakers	For 2P Type QO (40–125 A, 10 kA max. meter center SCCR) or QO-VH and QOH (40–60 A, 100 kA max. meter center SCCR)	EZM125QOA	273.00
DJM Circuit Breaker Alternate Lug (DE2)	Kit includes (3) 2-barrel lugs for (2) 2/0 AWG–350 kcmil Al/Cu or (2) 2/0 AWG–500 kcmil AL per lug.	32510	—
DJM Circuit Breaker Seal Kit	Tamper-evident kit to seal DJM trip dial cover, (1) per circuit breaker, if required. Meets NEC 240-6(c)	29375	—
Meter Socket Closing Plates	Lexan Closing Plate—EZM, EZMR, EZMH, EZMT Metal Closing plate—EZMR, EZMH, EZML	29007 RSG4	10.10 122.00

Table 2.25: Accessories (continued)

Accessory	Description	Cat. No.	\$ Price
Sealing Rings	Snap-on (Stainless Steel)	ARP0026	16.70
	Screw-Type (Aluminum)	29008W	20.10
	Latch-Type (Aluminum)-standard	2920910001	8.00
Barrel Lock Kit	For use on ringless EZM or MP branch unit covers, includes 6 each of head protectors, lock nuts and sealing caps. (Barrel lock not included.)	MMBLC	66.00
Tenant Circuit Breaker Filler Plates	125 A Branches—2P Type QO (2 per opening) 225 A Branches—2P and 3P Q-Frame	QOFP EZMPCP	3.60 26.00

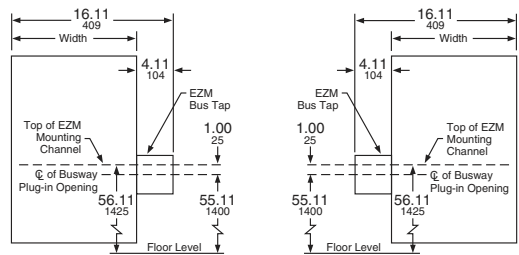
▼ Consult your nearest Square D/Schneider Electric sales office for details.
▲ All sockets include 5th Jaw factory-installed except EZM11__ devices.
◻ Meter center short circuit current rating is 10,000 RMS symmetrical amperes with manual circuit closers installed (bypass is not designed for use as continuous duty).
◆ For use on ring type meter sockets only.

Busway Transition Section

EZM busway transition section provides no overcurrent protection for the downstream EZM branch units. Tenant main circuit breakers in these branch units must be selected as "fully rated" equipment. (Examples: QO for 10 kA, QO-VH for 22 kA or QOH for 42 kA.)

Table 2.26: EZM Busway Transition Sections (3Ø only)

Ampere Rating	I-Line® Busway location	Neutral Front	Neutral Back	Width (in.)	\$ Price
1200	RIGHT of EZM Transition Section	EZM3BUSRF	EZM3BUSRB	12.00	2625.00
1200	LEFT of EZM Transition Section	EZM3BUSLF	EZM3BUSLB	12.00	2625.00



EZM3BUSRF and EZM3BUSRB EZM3BUSLF and EZM3BUSLB

Dimensions

Table 2.27: Main Devices Dimensions (in.)

Cat. No.	Height	Width	Depth	MC	Cat. No.	Height	Width	Depth	MC
EZM11000CB	53.97	18.66	11.50	34.30	EZM1ELBOW (indoor only) ▲	19.50	14.52	8.01	11.85 ■
EZM11000CBU	70.05	34.19	18.33	46.99	EZM31000CB	53.97	18.66	11.50	34.30
EZM11200CB	61.19	30.19	18.33	38.13	EZM31000CBU	70.05	34.19	18.33	46.99
EZM11200CBU	70.05	34.19	18.33	46.99	EZM31200CB	61.19	30.19	18.33	38.13
EZM11200FS	61.19	30.19	18.33	38.13	EZM31200CBU	70.05	34.19	18.33	46.99
EZM11200FSU	70.05	34.19	18.33	46.99	EZM31200TBU	44.71	33.16	11.68	31.17
EZM11200TBU	44.71	33.16	11.68	31.17	EZM31600G/JCBC	68.70	30.19	18.33	38.13
EZM11600G/JCBC	68.70	30.19	18.33	38.13	EZM31600G/JCBU	68.70	30.19	18.33	49.12
EZM11600G/JCBU	68.70	30.19	18.33	49.12	EZM31600TB	55.09	22.48	13.00	27.92
EZM11600TB	55.09	22.48	13.00	27.92	EZM32000CB	68.70	30.19	18.33	44.25
EZM12000CB	68.70	30.19	18.33	44.25	EZM32000CBU	68.70	30.19	18.33	44.25
EZM12000CBU	68.70	30.19	18.33	44.25	EZM32000TB	71.09	30.19	21.46	37.62
EZM12000TBU	71.09	30.19	21.46	37.62	EZM3225TB	21.81	11.66	6.37	13.00 ■
EZM1225TB	21.81	11.66	6.37	13.00 ■	EZM3400CB	53.97	18.66	11.50	34.30
EZM1400CB	53.97	18.66	11.50	34.30	EZM3400CBU	69.03	20.46	11.50	49.37
EZM1400CBU	69.03	20.46	11.50	49.37	EZM3400FS	53.97	18.66	11.50	34.30
EZM1400FS	53.97	18.66	11.50	34.30	EZM3400FSU	69.03	20.46	11.50	49.37
EZM1400FSU	69.03	20.46	11.50	49.37	EZM3400TB	30.46	17.15	7.09	16.29
EZM1400TB	30.46	17.15	7.09	16.29	EZM3400TBU	35.71	17.16	8.00	27.17
EZM1400TBU	35.71	17.16	8.00	27.17	EZM3600CB	53.97	18.66	11.50	34.30
EZM1600CB	53.97	18.66	11.50	34.30	EZM3600CBU	69.03	26.19	11.65	49.37
EZM1600CBU	69.03	20.46	11.50	49.37	EZM3600FS	53.97	18.66	11.50	34.30
EZM1600FS	53.97	18.66	11.50	34.30	EZM3600FSU	69.03	26.19	11.65	49.37
EZM1600FSU	69.03	20.46	11.50	49.37	EZM3600TB	30.46	17.15	7.09	16.29
EZM1600TB	30.46	17.15	7.09	16.29	EZM3800CB	53.97	18.66	11.50	34.30
EZM1800CB	53.97	18.66	11.50	34.30	EZM3800CBU	69.03	26.19	11.65	49.37
EZM1800CBU	69.03	20.46	11.50	49.37	EZM3800FS	53.97	18.66	11.50	34.30
EZM1800FS	53.97	18.66	11.50	34.30	EZM3800FSU	69.03	26.19	11.65	49.37
EZM1800FSU	69.03	20.46	11.50	49.37	EZM3800TB	53.97	18.66	11.50	34.30
EZM1800TB	53.97	18.66	11.50	34.30	EZM3800TBCU	51.76	22.48	7.09	28.01
EZM1800TBCU	51.76	22.48	7.09	28.01	EZM3800TBU	39.96	25.16	11.68	31.17
EZM1800TBU	39.96	25.16	11.68	31.17	EZM3EXT	19.34	11.66	6.37	11.85 ■
EZM1EXT	19.34	11.66	6.37	11.85 ■	EZM3EXT6	19.34	6.00	6.37	11.85 ■
EZM1EXT6	19.34	6.00	6.37	11.85 ■	EZM3CORNER (indoor only)	19.50	14.40	8.02	11.85 ■
EZM1CORNER (indoor only) ♦	19.50	14.40	8.02	11.85 ■					

- ▲ Each leg of elbow section measures 6.17 in. corner of wall to start of next enclosure.
- Secure without mounting channel, device to wall by use of swingable mounting feet.
- ♦ Each leg of this corner section measures 14.72 in. from wall to start of next enclosure.

Table 2.28: Branch Device Dimensions (in.)*

Cat. No.	Height	Width	Depth	MC	Top	Bottom	Cat. No.	Height	Width	Depth	MC	Top	Bottom
Single Phase													
EZM112225 [X, CUX]	43.41	17.38	8.09	32.34	22.18	12.23	EZML111400	44.55	23.21	9.44	37.81	24.02	21.53
EZM113125 [X, CUX]	42.37	12.25	7.09	31.30	13.18	11.19	EZML12225 [CU]	39.06	19.44	9.44	25.51	11.67	13.39
EZM113225 [X, CUX]	43.41	17.38	8.09	32.34	13.18	12.23	EZML12225D	39.06	19.44	9.44	25.51	11.67	13.39
EZM114125 [X, CUX]	48.12	12.25	7.09	31.30	9.93	11.19	EZML12400	69.61	23.21	9.44	37.81	20.64	21.53
EZM114225 [X, CUX]	52.00	17.38	8.09	32.34	12.77	12.23	EZML13225 [CU]	53.06	19.44	9.44	39.51	11.67	13.39
EZM115125 [X, CUX]	57.12	12.25	7.09	31.30	9.93	11.19	EZML13225D	53.06	19.44	9.44	39.51	11.67	13.39
EZM115225 [CU]	61.00	17.38	8.09	32.35	12.77	12.23	EZML14225 [CU]	67.06	19.44	9.44	39.51	11.67	13.39
EZM116125 [X, CUX]	66.12	12.25	7.09	40.30	9.93	11.19	EZML14225D	67.06	19.44	9.44	39.51	11.67	13.39
EZMH112225 [X, CUX]	43.41	17.38	8.09	32.34	22.18	12.23	EZMR12225 [X, CUX]	43.41	17.38	8.09	32.34	22.18	12.23
EZMH113125 [X, CUX]	42.37	12.25	7.09	31.30	13.18	11.19	EZMR113125 [X, CUX]	42.37	12.25	7.09	31.30	13.18	11.19
EZMH113225 [X, CUX]	43.41	17.38	8.09	32.34	13.18	12.23	EZMR113225 [X, CUX]	43.41	17.38	8.09	32.34	13.18	12.23
EZMH114125 [X, CUX]	48.12	12.25	7.09	31.30	9.93	11.19	EZMR114125 [X, CUX]	48.12	12.25	7.09	31.30	9.93	11.19
EZMH114225 [X, CUX]	52.00	17.38	8.09	32.34	12.77	12.23	EZMR114225 [X, CUX]	52.00	17.38	8.09	32.34	12.77	12.23
EZMH115125 [X, CUX]	57.12	12.25	7.09	31.30	9.93	11.19	EZMR115125 [X, CUX]	57.12	12.25	7.09	31.30	9.93	11.19
EZMH115225 [CU]	61.00	17.38	8.09	32.35	12.77	12.23	EZMR115225 [CU]	61.00	17.38	8.09	32.35	12.77	12.23
EZMH116125 [X, CUX]	66.12	12.25	7.09	40.30	9.93	11.19	EZMR116125 [X, CUX]	66.12	12.25	7.09	40.30	9.93	11.19
EZMK111400	45.55	27.56	9.74	37.81	24.51	21.04	EZMT111225	25.45	22.42	9.38	16.19	4.67	20.45
EZMK112400	72.99	27.56	9.74	37.81	22.26	21.04	EZMT12225	60.56	22.42	9.38	43.63	12.67	28.89
EZML111225 [CU]	39.06	19.44	9.44	25.51	25.67	13.39	EZMT13225	79.56	22.42	9.38	48.25	12.67	28.89
EZML11225D	39.06	19.44	9.44	25.51	25.67	13.39							
Three Phase													
EZM312225 [X, CUX, CA, XCA, CUXCA]	43.41	17.38	8.09	32.34	22.18	12.23	EZML314225 [CU, CA, CUCA]	67.06	19.44	9.44	39.51	11.67	13.39
EZM313125 [X, CUX, CA, XCA, CUXCA]	42.37	12.25	7.09	31.30	13.18	11.19	EZML314225D [CA]	67.06	19.44	9.44	39.51	11.67	13.39
EZM313225M10	42.37	12.25	7.09	24.29	10.18	12.19	EZML331225 [CU]	39.06	19.44	9.44	25.51	25.67	13.39
EZM313225 [X, CUX, CA, XCA, CUXCA]	43.41	17.38	8.09	32.34	13.18	12.23	EZML331225D	39.06	19.44	9.44	25.51	25.67	13.39
EZM314125 [X, CUX, CA, XCA, CUXCA]	48.12	12.25	7.09	31.30	9.93	11.19	EZML331400	45.55	23.21	9.44	37.81	24.02	21.53
EZM314225M10	52.12	12.25	7.09	34.29	9.93	12.19	EZML332225 [CU]	39.06	19.44	9.44	35.51	11.67	13.39
EZM314225 [X, CUX, CA, XCA, CUXCA]	52.00	17.38	8.09	32.34	12.77	12.23	EZML332225D	39.06	19.44	9.44	35.51	11.67	13.39
EZM315125 [X, CUX, CA, XCA, CUXCA]	57.12	12.25	7.09	31.30	9.93	11.19	EZML332400 [CU]	69.61	23.21	9.44	37.82	20.64	21.53
EZM315225M10	62.12	12.25	7.09	34.29	9.93	12.19	EZML333225 [CU]	53.06	19.44	9.44	39.51	11.67	13.39
EZM315225 [CU, CA, CUCA]	61.00	17.38	8.09	32.35	12.77	12.23	EZML333225D	53.06	19.44	9.44	39.51	11.67	13.39
EZM316125 [X, CUX, CA, XCA, CUXCA]	66.12	12.25	7.09	40.30	9.93	11.19	EZML334225 [CU]	67.06	19.44	9.44	39.51	11.67	13.39
EZMH312225 [X, CUX, CA, XCA]	43.41	17.38	8.09	32.34	22.18	12.23	EZML334225D	67.06	19.44	9.44	39.51	11.67	13.39
EZMH313125 [X, CUX, CA, XCA]	42.37	12.25	7.09	31.30	13.18	11.19	EZMR312225 [X, CUX, CA, XCA]	43.41	17.38	8.09	32.34	22.18	12.23
EZMH313225 [X, CUX, CA, XCA]	43.41	17.38	8.09	32.34	13.18	12.23	EZMR313125 [X, CUX, CA, XCA]	42.37	12.25	8.09	31.30	13.18	11.19
EZMH314125 [X, CUX, CA, XCA]	48.12	12.25	7.09	31.30	9.93	11.19	EZMR313225 [X, CUX, CA, XCA]	43.41	17.38	8.09	32.34	13.18	12.23
EZMH314225 [X, CUX, CA, XCA]	52.00	17.38	8.09	32.34	12.77	12.23	EZMR314125 [X, CUX, CA, XCA]	48.12	12.25	7.09	31.30	9.93	11.19
EZMH315125 [X, CUX, CA, XCA]	57.12	12.25	7.09	31.30	9.93	11.19	EZMR314225 [X, CUX, CA, XCA]	52.00	17.38	8.09	32.34	12.77	12.23
EZMH315225 [CU, CA, CUCA]	61.00	17.38	8.09	32.35	12.77	12.23	EZMR315125 [X, CUX, CA, XCA]	57.12	12.25	7.09	31.30	9.93	11.19
EZMH316125 [X, CUX, CA, XCA]	66.12	12.25	7.09	40.30	9.93	11.19	EZMR315225 [CU, CA, CUXCA]	61.00	17.38	8.09	32.35	12.77	12.23
EZMK311400 [CA]	45.55	27.56	9.74	30.60	24.51	21.04	EZMR316125 [X, CUX, CA, XCA]	66.12	12.25	7.09	40.30	9.93	11.19
EZMK312400 [CA]	72.99	27.56	9.74	37.81	22.26	21.04	EZMR332225 [CU]	39.06	19.44	9.44	25.51	11.67	13.39
EZMK331400	45.55	27.56	9.74	30.60	24.51	21.04	EZMR333225 [CU]	53.06	19.44	9.44	39.51	11.67	13.39
EZMK332400	72.99	27.											