



Spacial Steel Enclosures
 (p. 28-4)



Thalassa Polyester Enclosures
 (p. 28-7)



ClimaSys Thermal Management System
 (p. 28-8)

Product Summary

Spacial™ Steel Enclosures	28-2
Thalassa™ Polyester Enclosures	28-2
ClimaSys™ Thermal Management System	28-3
Our Software Suite	28-3
NEMA and UL Enclosure Ratings	28-3

New! **Spacial Steel Enclosures**

Floor-Standing and Wall-Mounting Options	28-4
---	-------------

New! **Thalassa Polyester Enclosures**

Floor-Standing and Wall-Mounting Options	28-7
---	-------------

New! **ClimaSys Thermal Management System**

Ventilation Systems with Filters	28-8
Cooling Units	28-8
Thermal Control	28-8



New! **Spacial™**

Metal enclosures and boxes

From our small boxes to large modular floor-standing enclosures, with the Spacial range you can find the optimal fit for your applications. Our extensive range of easy-to-use accessories helps you save time during your projects.

Select between steel or stainless steel to better suit the installation environment. In our stainless-steel offer you can find the optimal solution where cleanliness or protection in highly corrosive environments are required.

Steel: Indoor non-clean industrial environment

The environment in industrial plants can subject electric and electronic components to dust, splashing oil, and impacts. Such environments require a range of enclosures that are suited to harsh conditions yet are easy to install.

- **Universal range**, for industry.
- **EMC (electromagnetic compatibility) range**, against electromagnetic disturbances (treated with Aluzinc).

304L - 316L stainless steel: Demanding industrial environment

Food and beverage, pharmaceutical, petrochemical, and infrastructure industries have particularly demanding hygiene and corrosion resistance requirements. Our Spacial range is available in two grades of stainless steel:

- **304L stainless steel**, for resistance to corrosion and ease of cleaning (often used in food production environments).
- **316L stainless steel, also known as "marine stainless steel,"** for very high resistance to corrosion (used in saline or chlorinated environments).
- **Range of ATEX enclosures**, for potentially explosive atmospheres.

New product family names:

- Spacial S44 - S57 - S24: *Steel industrial boxes*
- Spacial SDB: *Steel junction boxes IP55*
- Spacial S3DC: *Steel wall-mounting enclosures*
- Spacial SM: *Compact metal enclosures*
- Spacial SF: *Modular metal enclosures*
- Spacial S3X: *Stainless-steel wall-mounting enclosures*
- Spacial SMX: *Stainless-steel monobloc floor-standing enclosures*
- Spacial SFX: *Stainless-steel modular enclosures*



New! **Thalassa™**

Insulated enclosures and boxes

Without the right protection, harsh environments can expose your installation to chemicals or other substances.

Developed to help protect your equipment in outdoor applications or harsh conditions, our Thalassa offer ranges from boxes to floor-standing enclosures made from fiberglass reinforced polyester.

Our Thalassa industrial boxes in ABS or polycarbonate are strong, easy to install, and designed to be used in highly demanding environments.

Insulating polyester and plastic materials (ABS, polycarbonate): Outdoor infrastructures and severe industrial environments

Outdoor infrastructures and electrical installations are exposed to direct sunlight, rain, saline mist, extreme temperatures, oil splashes, chemical and corrosive agents, and are in contact with the public.

- **Universal range**, for industry.
- **Range of ATEX enclosures**, for potentially explosive atmospheres.

New product family names:

- Thalassa TBS: *Insulating industrial boxes*
- Thalassa TBP: *Insulating industrial boxes*
- Thalassa PLS: *Insulating modular boxes IP65*
- Thalassa PLM: *Polyester wall-mounting enclosures*
- Thalassa PLA: *Polyester floor-standing enclosures*



New! **ClimaSys™**

Thermal management

Preserving and keeping the right temperature inside your enclosure is vital for maximizing the average service life of your installed devices. With our ClimaSys offer you can find the right solution, be it ventilation, cooling or heating, including control units for temperature, humidity and much more.

New product family names:

- ClimaSys CV: *Ventilation systems*
- ClimaSys CU: *Cooling unit*
- ClimaSys CR: *Insulated resistance heaters*
- ClimaSys CC: *Thermal control*

New! **Our software suite**

Spacial.pro

Spacial.pro allows you to make switchboard proposals based on the standard Spacial™ offer. A full project with several sets of switchboards is quoted in minutes, with automatic creation of the bill of material and 2D drawings for front and side views.

ProClima

Calculate the right choice for your thermal management requirements, according to the environment and the electrical/electronic devices installed inside the enclosure.

Spacial.ref and Thalassa.ref

These digital rules assist you in selecting the appropriate components for your application from our extensive product range. The tool automates product and accessory selection to help save you time and money.

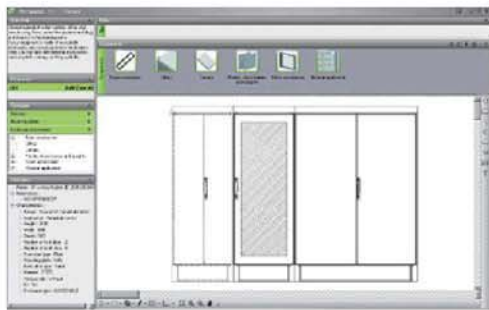


Table 28.1: NEMA and UL Enclosure and Component Ratings

Enclosures		Type of protection ♦												
		1	2	3	3R	3S	4	4X	5	6	6P	12	12K	13
Steel wall-mounting enclosures	S3DC	●	●	●▲	●▲		●▲	●▲				●■	●■	●■
	CRN	●	●▲	●▲	●▲		●▲	●▲	●▲			●		●
Stainless-steel wall-mounting enclosures	S3X	●	●▲	●▲	●▲		●▲	●▲	●▲			●	●■	●▲
Steel floor-standing enclosures	SM	●	●▲	●▲	●▲		●▲		●▲			●	●	●▲
Steel modular enclosures	SF	●										●	●	
Stainless-steel floor-standing enclosures	SMX	●	●▲	●▲	●▲		●▲	●▲	●▲			●	●	●▲
Stainless-steel modular enclosures	SFX	●										●	●	
Thermoplastic boxes	TBS - TBP	●		●		●	●	●						
Polyester modular boxes	PLS	●	●	●	●	●	●	●				●		●
Polyester wall-mounting enclosures	PLM	●	●	●	●	●	●	●				●		●
Polyester floor-standing enclosures	PLA	●	●	●▲	●▲		●▲	●▲	●▲			●		●

- ▲ 1 door
- 2 doors

Components		Type of protection ♦												
		1	2	3	3R	3S	4	4X	5	6	6P	12	12K	13
Ventilation system	CV											●	●	
Thermal regulation system	CC											●	●	

♦ In some ranges the classification depends on the model and version. The detailed protection types are indicated in the UL certifications.

Table 28.2: Spacial Steel Floor-Standing Enclosures



Height: mm (in)	Width: mm (in)	Depth: mm (in)	# Doors	NSYSM Welded		NSYSF Modular		Accessories, Floor-Standing Enclosures		
				Without mounting plate	Without mounting plate	2 Side panels	Mounting plate	Cable-gland plate, 1 entry	Plinth height 100 mm (3.9 in)	
									Front/back	Sides
1200 (47.2)	600 (23.6)	400 (15.7)	1	—	NSYSF12640	NSY2SP124	NSYMP126	NSYEC641	NSYSPF6100	NSYS4100
1200 (47.2)	600 (23.6)	600 (23.6)	1	—	NSYSF12660	NSY2SP126	NSYMP126	NSYEC661	NSYSPF6100	NSYS6100
1200 (47.2)	800 (31.5)	300 (11.8)	1	NSYSM12830	—	—	NSYMP128	—	NSYSPF8100	NSYS3100
1200 (47.2)	800 (31.5)	400 (15.7)	1	—	NSYSF12840	NSY2SP124	NSYMP128	NSYEC841	NSYSPF8100	NSYS4100
1200 (47.2)	800 (31.5)	600 (23.6)	1	—	NSYSF12860	NSY2SP126	NSYMP128	NSYEC861	NSYSPF8100	NSYS6100
1200 (47.2)	1000 (39.4)	300 (11.8)	2	NSYSM1210302D	—	—	NSYMP1210	—	NSYSPF10100	NSYS3100
1200 (47.2)	1200 (47.2)	400 (15.7)	2	NSYSM1212402D	—	—	NSYMP1212	—	NSYSPF12100	NSYS4100
1400 (55.1)	600 (23.6)	300 (11.8)	1	NSYSM14630	—	—	NSYMP146	—	NSYSPF6100	NSYS3100
1400 (55.1)	600 (23.6)	400 (15.7)	1	NSYSM14640	NSYSF14640	NSY2SP144	NSYMP146	NSYEC641	NSYSPF6100	NSYS4100
1400 (55.1)	800 (31.5)	300 (11.8)	1	NSYSM14830	—	—	NSYMP148	—	NSYSPF8100	NSYS3100
1400 (55.1)	800 (31.5)	400 (15.7)	1	NSYSM14840	NSYSF14840	NSY2SP144	NSYMP148	NSYEC841	NSYSPF8100	NSYS4100
1400 (55.1)	1000 (39.4)	400 (15.7)	2	NSYSM1410402D	—	—	NSYMP1410	—	NSYSPF10100	NSYS4100
1400 (55.1)	1200 (47.2)	400 (15.7)	2	NSYSM1412402D	—	—	NSYMP1412	—	NSYSPF12100	NSYS4100
1600 (63.0)	600 (23.6)	300 (11.8)	1	NSYSM16630	—	—	NSYMP166	—	NSYSPF6100	NSYS3100
1600 (63.0)	600 (23.6)	400 (15.7)	1	NSYSM16640	—	—	NSYMP166	—	NSYSPF6100	NSYS4100
1600 (63.0)	600 (23.6)	600 (23.6)	1	—	NSYSF16660	NSY2SP166	NSYMP166	NSYEC661	NSYSPF6100	NSYS6100
1600 (63.0)	600 (23.6)	800 (31.5)	1	—	NSYSF16680	NSY2SP168	NSYMP166	NSYEC681	NSYSPF6100	NSYS8100
1600 (63.0)	800 (31.5)	300 (11.8)	1	NSYSM16830	—	—	NSYMP168	—	NSYSPF8100	NSYS3100
1600 (63.0)	800 (31.5)	400 (15.7)	1	NSYSM16840	—	—	NSYMP168	—	NSYSPF8100	NSYS4100
1600 (63.0)	800 (31.5)	600 (23.6)	1	—	NSYSF16860	NSY2SP166	NSYMP168	NSYEC861	NSYSPF8100	NSYS6100
1600 (63.0)	800 (31.5)	800 (31.5)	1	—	NSYSF16880	NSY2SP168	NSYMP168	NSYEC881	NSYSPF8100	NSYS8100
1600 (63.0)	1000 (39.4)	300 (11.8)	2	NSYSM1610302D	—	—	NSYMP1610	—	NSYSPF10100	NSYS3100
1600 (63.0)	1000 (39.4)	400 (15.7)	2	NSYSM1610402D	—	—	NSYMP1610	—	NSYSPF10100	NSYS4100
1600 (63.0)	1200 (47.2)	300 (11.8)	2	NSYSM1612302D	—	—	NSYMP1612	—	NSYSPF12100	NSYS3100
1600 (63.0)	1200 (47.2)	400 (15.7)	2	NSYSM1612402D	—	—	NSYMP1612	—	NSYSPF12100	NSYS4100
1800 (70.9)	400 (15.7)	400 (15.7)	1	—	NSYSF18440	NSY2SP184	—	NSYEC441	NSYSPF4100	NSYS4100
1800 (70.9)	400 (15.7)	500 (19.7)	1	—	NSYSF18450	NSY2SP185	—	NSYEC451	NSYSPF4100	NSYS5100
1800 (70.9)	400 (15.7)	600 (23.6)	1	—	NSYSF18460	NSY2SP186	—	NSYEC461	NSYSPF4100	NSYS6100
1800 (70.9)	600 (23.6)	300 (11.8)	1	NSYSM18630	—	—	NSYMP186	—	NSYSPF6100	NSYS3100
1800 (70.9)	600 (23.6)	400 (15.7)	1	NSYSM18640	NSYSF18640	NSY2SP184	NSYMP186	NSYEC641	NSYSPF6100	NSYS4100
1800 (70.9)	600 (23.6)	500 (19.7)	1	NSYSM18650	NSYSF18650	NSY2SP185	NSYMP186	NSYEC651	NSYSPF6100	NSYS5100
1800 (70.9)	600 (23.6)	600 (23.6)	1	—	NSYSF18660	NSY2SP186	NSYMP186	NSYEC661	NSYSPF6100	NSYS6100
1800 (70.9)	600 (23.6)	800 (31.5)	1	—	—	NSY2SP188	NSYMP186	NSYEC681	NSYSPF6100	NSYS8100
1800 (70.9)	800 (31.5)	300 (11.8)	1	NSYSM18830	—	—	NSYMP188	—	NSYSPF8100	NSYS3100
1800 (70.9)	800 (31.5)	400 (15.7)	1	NSYSM18840	NSYSF18840	NSY2SP184	NSYMP188	NSYEC841	NSYSPF8100	NSYS4100
1800 (70.9)	800 (31.5)	500 (19.7)	1	NSYSM18850	NSYSF18850	NSY2SP185	NSYMP188	NSYEC851	NSYSPF8100	NSYS5100
1800 (70.9)	800 (31.5)	600 (23.6)	1	NSYSM18860	NSYSF18860	NSY2SP186	NSYMP188	NSYEC861	NSYSPF8100	NSYS6100
1800 (70.9)	800 (31.5)	600 (23.6)	2	—	NSYSF188602D	NSY2SP186	NSYMP188	NSYEC861	NSYSPF8100	NSYS6100
1800 (70.9)	1000 (39.4)	400 (15.7)	1	NSYSM181040	NSYSF181040	NSY2SP184	NSYMP1810	NSYEC1041	NSYSPF10100	NSYS4100
1800 (70.9)	1000 (39.4)	400 (15.7)	2	NSYSM1810402D	NSYSF1810402D	NSY2SP184	NSYMP1810	NSYEC1041	NSYSPF10100	NSYS4100
1800 (70.9)	1000 (39.4)	500 (19.7)	1	—	NSYSF181050	NSY2SP185	NSYMP1810	NSYEC1051	NSYSPF10100	NSYS5100
1800 (70.9)	1000 (39.4)	500 (19.7)	2	NSYSM1810502D	—	—	NSYMP1810	—	NSYSPF10100	NSYS5100
1800 (70.9)	1000 (39.4)	600 (23.6)	1	—	NSYSF181060	NSY2SP186	NSYMP1810	NSYEC1061	NSYSPF10100	NSYS6100
1800 (70.9)	1000 (39.4)	600 (23.6)	2	—	NSYSF1810602D	NSY2SP186	NSYMP1810	NSYEC1061	NSYSPF10100	NSYS6100
1800 (70.9)	1200 (47.2)	400 (15.7)	2	NSYSM1812402D	NSYSF1812402D	NSY2SP184	NSYMP1812	NSYEC1241	NSYSPF12100	NSYS4100
1800 (70.9)	1200 (47.2)	500 (19.7)	2	NSYSM1812502D	NSYSF1812502D	NSY2SP185	NSYMP1812	NSYEC1251	NSYSPF12100	NSYS5100
1800 (70.9)	1200 (47.2)	600 (23.6)	2	—	NSYSF1812602D	NSY2SP186	NSYMP1812	NSYEC1261	NSYSPF12100	NSYS6100
1800 (70.9)	1600 (63.0)	400 (15.7)	2	NSYSM1816402D	—	—	NSYMP1816	—	NSYSPF16100	NSYS4100
1800 (70.9)	1600 (63.0)	500 (19.7)	2	NSYSM1816502D	—	—	NSYMP1816	—	NSYSPF16100	NSYS5100
2000 (78.7)	300 (11.8)	500 (19.7)	1	—	NSYSF20350	NSY2SP205	—	NSYEC351	NSYSPF3100	NSYS5100
2000 (78.7)	300 (11.8)	600 (23.6)	1	—	NSYSF20360	NSY2SP206	—	NSYEC361	NSYSPF3100	NSYS6100
2000 (78.7)	400 (15.7)	400 (15.7)	1	—	NSYSF20440	NSY2SP204	—	NSYEC441	NSYSPF4100	NSYS4100
2000 (78.7)	400 (15.7)	500 (19.7)	1	—	NSYSF20450	NSY2SP205	—	NSYEC451	NSYSPF4100	NSYS5100
2000 (78.7)	400 (15.7)	600 (23.6)	1	—	NSYSF20460	NSY2SP206	—	NSYEC461	NSYSPF4100	NSYS6100
2000 (78.7)	400 (15.7)	800 (31.5)	1	—	NSYSF20480	NSY2SP208	—	NSYEC481	NSYSPF4100	NSYS8100
2000 (78.7)	600 (23.6)	300 (11.8)	1	NSYSM20630	—	—	NSYMP206	—	NSYSPF6100	NSYS3100
2000 (78.7)	600 (23.6)	400 (15.7)	1	NSYSM20640	NSYSF20640	NSY2SP204	NSYMP206	NSYEC641	NSYSPF6100	NSYS4100

Table 28.2: Spacial Steel Floor-Standing Enclosures (continued)

Height: mm (in)	Width: mm (in)	Depth: mm (in)	# Doors	NSYSM Welded	NSYSF Modular		Accessories, Floor-Standing Enclosures			
				Without mounting plate	Without mounting plate	2 Side panels	Mounting plate	Cable-gland plate, 1 entry	Plinth height 100 mm (3.9 in)	
									Front/back	Sides
2000 (78.7)	600 (23.6)	500 (19.7)	1	NSYSM20650	NSYSF20650	NSY2SP205	NSYMP206	NSYEC651	NSYSPF6100	NSYSPS5100
2000 (78.7)	600 (23.6)	600 (23.6)	1	—	NSYSF20660	NSY2SP206	NSYMP206	NSYEC661	NSYSPF6100	NSYSPS6100
2000 (78.7)	600 (23.6)	800 (31.5)	1	—	NSYSF20680	NSY2SP208	NSYMP206	NSYEC681	NSYSPF6100	NSYSPS8100
2000 (78.7)	800 (31.5)	300 (11.8)	1	NSYSM20830	—	—	NSYMP208	—	NSYSPF8100	NSYSPS3100
2000 (78.7)	800 (31.5)	400 (15.7)	1	NSYSM20840	NSYSF20840	NSY2SP204	NSYMP208	NSYEC841	NSYSPF8100	NSYSPS4100
2000 (78.7)	800 (31.5)	500 (19.7)	1	NSYSM20850	NSYSF20850	NSY2SP205	NSYMP208	NSYEC851	NSYSPF8100	NSYSPS5100
2000 (78.7)	800 (31.5)	600 (23.6)	1	NSYSM20860	NSYSF20860	NSY2SP206	NSYMP208	NSYEC861	NSYSPF8100	NSYSPS6100
2000 (78.7)	800 (31.5)	600 (23.6)	2	—	NSYSF208602D	NSY2SP206	NSYMP208	NSYEC861	NSYSPF8100	NSYSPS6100
2000 (78.7)	800 (31.5)	800 (31.5)	1	—	NSYSF20880	NSY2SP208	NSYMP208	NSYEC881	NSYSPF8100	NSYSPS8100
2000 (78.7)	1000 (39.4)	400 (15.7)	1	—	NSYSF201040	NSY2SP204	NSYMP2010	NSYEC1041	NSYSPF10100	NSYSPS4100
2000 (78.7)	1000 (39.4)	400 (15.7)	2	NSYSM2010402D	NSYSF2010402D	NSY2SP204	NSYMP2010	NSYEC1041	NSYSPF10100	NSYSPS4100
2000 (78.7)	1000 (39.4)	500 (19.7)	1	—	NSYSF201050	NSY2SP205	NSYMP2010	NSYEC1051	NSYSPF10100	NSYSPS5100
2000 (78.7)	1000 (39.4)	500 (19.7)	2	NSYSM2010502D	NSYSF2010502D	NSY2SP205	NSYMP2010	NSYEC1051	NSYSPF10100	NSYSPS5100
2000 (78.7)	1000 (39.4)	600 (23.6)	1	—	NSYSF201060	NSY2SP206	NSYMP2010	NSYEC1061	NSYSPF10100	NSYSPS6100
2000 (78.7)	1000 (39.4)	600 (23.6)	2	—	NSYSF2010602D	NSY2SP206	NSYMP2010	NSYEC1061	NSYSPF10100	NSYSPS6100
2000 (78.7)	1000 (39.4)	800 (31.5)	1	—	NSYSF201080	NSY2SP208	NSYMP2010	NSYEC1081	NSYSPF10100	NSYSPS8100
2000 (78.7)	1200 (47.2)	400 (15.7)	2	NSYSM2012402D	NSYSF2012402D	NSY2SP204	NSYMP2012	NSYEC1241	NSYSPF12100	NSYSPS4100
2000 (78.7)	1200 (47.2)	500 (19.7)	2	NSYSM2012502D	NSYSF2012502D	NSY2SP205	NSYMP2012	NSYEC1251	NSYSPF12100	NSYSPS5100
2000 (78.7)	1200 (47.2)	600 (23.6)	2	NSYSM2012602D	NSYSF2012602D	NSY2SP206	NSYMP2012	NSYEC1261	NSYSPF12100	NSYSPS6100
2000 (78.7)	1200 (47.2)	800 (31.5)	2	—	NSYSF2012802D	NSY2SP208	NSYMP2012	NSYEC1281	NSYSPF12100	NSYSPS8100
2000 (78.7)	1600 (63.0)	400 (15.7)	2	NSYSM2016402D	NSYSF206402D	NSY2SP204	NSYMP2016	NSYEC1641	NSYSPF16100	NSYSPS4100
2000 (78.7)	1600 (63.0)	500 (19.7)	2	NSYSM2016502D	NSYSF2016502D	NSY2SP205	NSYMP2016	NSYEC1651	NSYSPF16100	NSYSPS5100
2000 (78.7)	1600 (63.0)	600 (23.6)	2	NSYSM2016602D	NSYSF2016602D	NSY2SP206	NSYMP2016	NSYEC1661	NSYSPF16100	NSYSPS6100
2200 (86.6)	400 (15.7)	600 (23.6)	1	—	NSYSF22460	NSY2SP226	—	NSYEC461	NSYSPF4100	NSYSPS6100
2200 (86.6)	600 (23.6)	600 (23.6)	1	—	NSYSF22660	NSY2SP226	NSYMP226	NSYEC661	NSYSPF6100	NSYSPS6100
2200 (86.6)	600 (23.6)	800 (31.5)	1	—	NSYSF22680	NSY2SP228	NSYMP226	NSYEC681	NSYSPF6100	NSYSPS8100
2200 (86.6)	800 (31.5)	600 (23.6)	1	—	NSYSF22860	NSY2SP226	NSYMP228	NSYEC861	NSYSPF8100	NSYSPS6100
2200 (86.6)	800 (31.5)	800 (31.5)	1	—	NSYSF22880	NSY2SP228	NSYMP228	NSYEC881	NSYSPF8100	NSYSPS8100
2200 (86.6)	1000 (39.4)	600 (23.6)	1	—	NSYSF221060	NSY2SP226	NSYMP2210	NSYEC1061	NSYSPF10100	NSYSPS6100
2200 (86.6)	1200 (47.2)	600 (23.6)	2	—	NSYSF2212602D	NSY2SP226	NSYMP2212	NSYEC1261	NSYSPF12100	NSYSPS6100
2200 (86.6)	1200 (47.2)	800 (31.5)	2	—	NSYSF2212802D	NSY2SP228	NSYMP2212	NSYEC1281	NSYSPF12100	NSYSPS8100

Table 28.3: Spacial Stainless Steel Floor-Standing Enclosures



Height: mm (in)	Width: mm (in)	Depth: mm (in)	# Doors	NSYSMX	NSYSFX Modular		Accessories, Stainless Steel		
				Without mounting plate	Without mounting plate	2 Side panels	Mounting plate	Plinth height 100 mm (3.9 in)	
								Front/back	Sides
1400 (55.1)	1000 (39.4)	300 (11.8)	2	NSYSMX141030	—	—	NSYMP1410	NSYSPXF10100H	NSYSPXS3100H
1600 (63.0)	800 (31.5)	400 (15.7)	1	NSYSMX16840	—	—	NSYMP168	NSYSPXF8100H	NSYSPXS4100H
1800 (70.9)	600 (23.6)	400 (15.7)	1	NSYSMX18640	NSYSFX18640	NSY2SPX184	NSYMP186	NSYSPXF6100H	NSYSPXS4100H
1800 (70.9)	800 (31.5)	400 (15.7)	1	NSYSMX18840	NSYSFX18840	NSY2SPX184	NSYMP188	NSYSPXF8100H	NSYSPXS4100H
1800 (70.9)	1200 (47.2)	400 (15.7)	2	NSYSMX181240	NSYSFX181240	NSY2SPX184	NSYMP1812	NSYSPXF12100H	NSYSPXS4100H
1800 (70.9)	1600 (63.0)	400 (15.7)	2	NSYSMX181640	—	—	NSYMP1813	NSYSPXF16100H	NSYSPXS4100H
2000 (78.7)	600 (23.6)	500 (19.7)	1	—	NSYSFX20650	NSY2SPX205	NSYMP206	—	—
2000 (78.7)	800 (31.5)	400 (15.7)	1	—	NSYSFX20840	NSY2SPX204	NSYMP208	—	—
2000 (78.7)	800 (31.5)	500 (19.7)	1	NSYSMX20850	—	—	NSYMP208	NSYSPXF8100H	NSYSPXS5100H
2000 (78.7)	800 (31.5)	600 (23.6)	1	—	NSYSFX20860	NSY2SPX206	NSYMP208	—	—
2000 (78.7)	1000 (39.4)	400 (15.7)	2	NSYSMX201040	—	—	NSYMP2010	NSYSPXF10100H	NSYSPXS4100H
2000 (78.7)	1000 (39.4)	600 (23.6)	2	—	NSYSFX201060	NSY2SPX206	NSYMP2010	—	—
2000 (78.7)	1200 (47.2)	500 (19.7)	2	NSYSMX201250	—	—	NSYMP2012	NSYSPXF12100H	NSYSPXS5100H
2000 (78.7)	1200 (47.2)	600 (23.6)	2	—	NSYSFX201260	NSY2SPX206	NSYMP2012	—	—
2000 (78.7)	1600 (63.0)	600 (23.6)	2	NSYSMX201660	—	—	NSYMP2016	NSYSPXF16100H	NSYSPXS6100H

Table 28.4: Spacial Steel Wall-Mounting Enclosures



CRN/CRNG



S3DC



S3X Stainless Steel



Mounting Plate

Height: mm (in)	Width: mm (in)	Depth: mm (in)	# Doors ^A	Spacial Steel Wall-Mounting Enclosures			Mounting Plate
				CRN/CRNG	S3DC	S3X Stainless steel	
200 (7.9)	200 (7.9)	150 (5.9)	1	NSYCRN22150 ■	—	—	NSYMM22
200 (7.9)	300 (11.8)	150 (5.9)	1	NSYCRN23150 ■	—	—	NSYMM32
250 (9.8)	200 (7.9)	150 (5.9)	1	NSYCRN252150	—	—	NSYMM2520
300 (11.8)	200 (7.9)	150 (5.9)	1	—	NSYS3DC3215	NSYS3X3215	NSYMM32
300 (11.8)	250 (9.8)	150 (5.9)	1	NSYCRN325150	—	NSYS3X302515	NSYMM3025
300 (11.8)	250 (9.8)	200 (7.9)	1	NSYCRN325200	—	—	NSYMM3025
300 (11.8)	300 (11.8)	150 (5.9)	1	NSYCRN33150	NSYS3DC3315	NSYS3X3315	NSYMM33
300 (11.8)	300 (11.8)	200 (7.9)	1	NSYCRN33200	NSYS3DC3320	—	NSYMM33
300 (11.8)	400 (15.7)	200 (7.9)	1	NSYCRN34200	—	—	NSYMM43
300 (11.8)	450 (17.7)	150 (5.9)	1	NSYCRN345150 ■	—	—	NSYMM3045
400 (15.7)	300 (11.8)	150 (5.9)	1	NSYCRN43150	NSYS3DC4315	NSYS3X4315	NSYMM43
400 (15.7)	300 (11.8)	200 (7.9)	1	NSYCRN43200	NSYS3DC4320	NSYS3X4320	NSYMM43
400 (15.7)	400 (15.7)	200 (7.9)	1	NSYCRN44200	NSYS3DC4420	NSYS3X4420	NSYMM44
400 (15.7)	600 (23.6)	200 (7.9)	—	—	—	NSYS3X4620	NSYMM46
400 (15.7)	600 (23.6)	250 (9.8)	1	NSYCRN46250	—	—	NSYMM64
400 (15.7)	600 (23.6)	300 (11.8)	1	NSYCRN46300	—	—	NSYMM64
500 (19.7)	400 (15.7)	150 (5.9)	1	NSYCRN54150	—	—	NSYMM54
500 (19.7)	400 (15.7)	200 (7.9)	1	NSYCRN54200	NSYS3DC5420	NSYS3X5420	NSYMM54
500 (19.7)	400 (15.7)	250 (9.8)	1	NSYCRN54250	NSYS3DC5425	—	NSYMM54
500 (19.7)	500 (19.7)	200 (7.9)	1	—	NSYS3DC5520	—	NSYMM55
500 (19.7)	500 (19.7)	250 (9.8)	1	NSYCRN55250	NSYS3DC5525	—	NSYMM55
600 (23.6)	400 (15.7)	150 (5.9)	1	NSYCRN64150	—	—	NSYMM64
600 (23.6)	400 (15.7)	200 (7.9)	1	NSYCRN64200	NSYS3DC6420	NSYS3X6420	NSYMM64
600 (23.6)	400 (15.7)	250 (9.8)	1	NSYCRN64250	NSYS3DC6425	—	NSYMM64
600 (23.6)	500 (19.7)	150 (5.9)	1	NSYCRN65150	—	—	NSYMM65
600 (23.6)	500 (19.7)	200 (7.9)	1	NSYCRN65200	—	—	NSYMM65
600 (23.6)	500 (19.7)	250 (9.8)	1	NSYCRN65250	—	—	NSYMM65
600 (23.6)	600 (23.6)	200 (7.9)	1	NSYCRN66200	NSYS3DC6620	—	NSYMM66
600 (23.6)	600 (23.6)	250 (9.8)	1	NSYCRN66250	NSYS3DC6625	NSYS3X6625	NSYMM66
600 (23.6)	600 (23.6)	300 (11.8)	1	NSYCRN66300	NSYS3DC6630	—	NSYMM66
600 (23.6)	800 (31.5)	300 (11.8)	1	NSYCRN68300	—	—	NSYMM86
700 (27.6)	500 (19.7)	200 (7.9)	1	NSYCRN75200	—	—	NSYMM75
700 (27.6)	500 (19.7)	250 (9.8)	1	NSYCRN75250	NSYS3DC7525	NSYS3X7525	NSYMM75
800 (31.5)	600 (23.6)	200 (7.9)	1	NSYCRN86200	NSYS3DC8620	—	NSYMM86
800 (31.5)	600 (23.6)	250 (9.8)	1	NSYCRN86250	NSYS3DC8625	NSYS3X8625	NSYMM86
800 (31.5)	600 (23.6)	300 (11.8)	1	NSYCRN86300	NSYS3DC8630	—	NSYMM86
800 (31.5)	600 (23.6)	400 (15.7)	1	NSYCRNG86400	NSYS3DC8640	—	NSYMM86
800 (31.5)	800 (31.5)	200 (7.9)	1	NSYCRN88200	—	—	NSYMM88
800 (31.5)	800 (31.5)	250 (9.8)	1	—	NSYS3DC8825	—	NSYMM88
800 (31.5)	800 (31.5)	300 (11.8)	1	NSYCRN88300	NSYS3DC8830	NSYS3X8830	NSYMM86
800 (31.5)	1000 (39.4)	300 (11.8)	2	NSYCRNG810300D	—	—	NSYMM108
800 (31.5)	1200 (47.2)	300 (11.8)	2	NSYCRNG812300D	—	—	NSYMM128
1000 (39.4)	600 (23.6)	250 (9.8)	1	NSYCRN106250	NSYS3DC10625	—	NSYMM106
1000 (39.4)	600 (23.6)	300 (11.8)	1	NSYCRN106300	—	—	NSYMM106
1000 (39.4)	600 (23.6)	400 (15.7)	1	NSYCRNG106400	—	—	NSYMM106
1000 (39.4)	800 (31.5)	250 (9.8)	1	NSYCRN108250	NSYS3DC10825	—	NSYMM108
1000 (39.4)	800 (31.5)	300 (11.8)	1	NSYCRN108300	NSYS3DC10830	NSYS3X10830	NSYMM108
1000 (39.4)	800 (31.5)	400 (15.7)	1	NSYCRNG108400	NSYS3DC10840	—	NSYMM108
1000 (39.4)	1000 (39.4)	300 (11.8)	2	NSYCRNG1010300D	NSYS3DC101030	NSYS3X101030	NSYMM1010
1000 (39.4)	1200 (47.2)	300 (11.8)	2	NSYCRNG1012300D	—	—	NSYMM1210
1000 (39.4)	1200 (47.2)	400 (15.7)	2	NSYCRNG1012400D	—	—	NSYMM1210
1200 (47.2)	600 (23.6)	300 (11.8)	1	NSYCRNG126300	—	—	NSYMM126
1200 (47.2)	600 (23.6)	400 (15.7)	1	NSYCRNG126400	—	—	NSYMM126
1200 (47.2)	800 (31.5)	300 (11.8)	1	NSYCRNG128300	NSYS3DC12830	NSYS3X12830	NSYMM128
1200 (47.2)	800 (31.5)	400 (15.7)	1	NSYCRNG128400	NSYS3DC12840	—	NSYMM128
1200 (47.2)	1000 (39.4)	300 (11.8)	2	NSYCRNG1210300D	NSYS3DC121030	NSYS3X121030	NSYMM1210
1200 (47.2)	1000 (39.4)	400 (15.7)	2	NSYCRNG1210400D	—	—	NSYMM1210
1200 (47.2)	1200 (47.2)	300 (11.8)	2	NSYCRNG1212300D	—	—	NSYMM1212
1200 (47.2)	1200 (47.2)	400 (15.7)	2	NSYCRNG1212400D	—	—	NSYMM1212
1400 (55.1)	1000 (39.4)	300 (11.8)	2	NSYCRNG1410300D	—	—	NSYMM1410

▲ IP66 with one door, IP55 with two doors.
 ■ Two cable gland plates, one on top and one on bottom.



ABS/PC Wall-Mounting Enclosure IP66—Plain Door

Table 28.5: Thalassa Polyester Wall-Mounting Enclosures

Height: mm (in)	Width: mm (in)	Depth: mm (in)	ABS/PC Wall-Mounting Enclosures IP66		Polyester Wall-Mounting Enclosures IP66				Polyester Wall-Mounting ATEX Enclosures	Mounting Plate
			Plain door	Transparent door	Plain door	Transparent door	Plain door 3-point closure	Transparent door 3-point closure		
310 (12.2)	215 (8.5)	160 (6.3)	NSYPLM32	NSYPLM32T	—	—	—	—	—	NSYMM32
308 (12.1)	255 (10.0)	160 (6.3)	—	—	NSYPLM3025	NSYPLM3025T	—	—	NSYPLMEX3025	NSYMM3025
430 (16.9)	330 (13.0)	200 (7.9)	—	—	NSYPLM43	NSYPLM43T	NSYPLM43V	NSYPLM43TV	NSYPLMEX43	NSYMM43
530 (20.9)	430 (16.9)	200 (7.9)	—	—	NSYPLM54	NSYPLM54T	NSYPLM54V	NSYPLM54TV	NSYPLMEX54	NSYMM54
647 (25.5)	436 (17.2)	250 (9.8)	—	—	NSYPLM64	NSYPLM64T	NSYPLM64V	NSYPLM64TV	NSYPLMEX64	NSYMM64
747 (29.4)	536 (21.1)	300 (11.8)	—	—	NSYPLM75	NSYPLM75T	NSYPLM75V	NSYPLM75TV	NSYPLMEX75	NSYMM75
847 (33.3)	636 (25.0)	300 (11.8)	—	—	NSYPLM86	NSYPLM86T	NSYPLM86V	NSYPLM86TV	NSYPLMEX86	NSYMM86
1056 (41.6)	852 (33.5)	350 (13.8)	—	—	NSYPLM108	NSYPLM108T	—	—	NSYPLMEX108	NSYMM108



Sealed Enclosure IP65—Plain Door



Sealed Enclosure IP65—Transparent Door



Enclosure with Open Bottom IP54—Plain Door

Table 28.6: Thalassa Polyester Floor-Standing Enclosures

Height: mm (in)	Width: mm (in)	Depth: mm (in)	# Doors	Sealed Enclosure, IP65		Enclosures with Open Bottom, IP54
				Plain door	Transparent door	Plain door
500 (19.7)	500 (19.7)	320 (12.6)	1	NSYPLA553	NSYPLA553T	NSYPLAZ553
500 (19.7)	500 (19.7)	420 (16.5)	1	NSYPLA554	NSYPLA554T	NSYPLAZ554
500 (19.7)	750 (29.5)	320 (12.6)	1	NSYPLA573	NSYPLA573T	NSYPLAZ573
500 (19.7)	750 (29.5)	420 (16.5)	1	NSYPLA574	NSYPLA574T	NSYPLAZ574
500 (19.7)	1000 (39.4)	320 (12.6)	2	NSYPLA5103	NSYPLA5103T	NSYPLAZ5103
500 (19.7)	1000 (39.4)	420 (16.5)	2	NSYPLA5104	NSYPLA5104T	NSYPLAZ5104
500 (19.7)	1250 (49.2)	320 (12.6)	2	NSYPLA5123	NSYPLA5123T	NSYPLAZ5123
500 (19.7)	1250 (49.2)	420 (16.5)	2	NSYPLA5124	NSYPLA5124T	NSYPLAZ5124
750 (29.5)	500 (19.7)	320 (12.6)	1	NSYPLA753	NSYPLA753T	NSYPLAZ753
750 (29.5)	500 (19.7)	420 (16.5)	1	NSYPLA754	NSYPLA754T	NSYPLAZ754
750 (29.5)	750 (29.5)	320 (12.6)	1	NSYPLA773	NSYPLA773T	NSYPLAZ773
750 (29.5)	750 (29.5)	420 (16.5)	1	NSYPLA774	NSYPLA774T	NSYPLAZ774
750 (29.5)	1000 (39.4)	320 (12.6)	2	NSYPLA7103	NSYPLA7103T	NSYPLAZ7103
750 (29.5)	1000 (39.4)	420 (16.5)	2	NSYPLA7104	NSYPLA7104T	NSYPLAZ7104
750 (29.5)	1250 (49.2)	320 (12.6)	2	NSYPLA7123	NSYPLA7123T	NSYPLAZ7123
750 (29.5)	1250 (49.2)	420 (16.5)	2	NSYPLA7124	NSYPLA7124T	NSYPLAZ7124
1000 (39.4)	500 (19.7)	320 (12.6)	1	NSYPLA1053	NSYPLA1053T	NSYPLAZ1053
1000 (39.4)	500 (19.7)	420 (16.5)	1	NSYPLA1054	NSYPLA1054T	NSYPLAZ1054
1000 (39.4)	750 (29.5)	320 (12.6)	1	NSYPLA1073	NSYPLA1073T	NSYPLAZ1073
1000 (39.4)	750 (29.5)	420 (16.5)	1	NSYPLA1074	NSYPLA1074T	NSYPLAZ1074
1000 (39.4)	1000 (39.4)	320 (12.6)	2	NSYPLA10103	NSYPLA10103T	NSYPLAZ10103
1000 (39.4)	1000 (39.4)	420 (16.5)	2	NSYPLA10104	NSYPLA10104T	NSYPLAZ10104
1000 (39.4)	1250 (49.2)	320 (12.6)	2	NSYPLA10123	NSYPLA10123T	NSYPLAZ10123
1000 (39.4)	1250 (49.2)	420 (16.5)	2	NSYPLA10124	NSYPLA10124T	NSYPLAZ10124
1250 (49.2)	500 (19.7)	320 (12.6)	1	NSYPLA1253	NSYPLA1253T	NSYPLAZ1253
1250 (49.2)	500 (19.7)	420 (16.5)	1	NSYPLA1254	NSYPLA1254T	NSYPLAZ1254
1250 (49.2)	750 (29.5)	320 (12.6)	1	NSYPLA1273	NSYPLA1273T	NSYPLAZ1273
1250 (49.2)	750 (29.5)	420 (16.5)	1	NSYPLA1274	NSYPLA1274T	NSYPLAZ1274
1250 (49.2)	1000 (39.4)	320 (12.6)	2	NSYPLA12103	NSYPLA12103T	NSYPLAZ12103
1250 (49.2)	1000 (39.4)	420 (16.5)	2	NSYPLA12104	NSYPLA12104T	NSYPLAZ12104
1250 (49.2)	1250 (49.2)	320 (12.6)	2	NSYPLA12123	NSYPLA12123T	NSYPLAZ12123
1250 (49.2)	1250 (49.2)	420 (16.5)	2	NSYPLA12124	NSYPLA12124T	NSYPLAZ12124
1500 (59.1)	500 (19.7)	320 (12.6)	1	NSYPLA1553	NSYPLA1553T	NSYPLAZ1553
1500 (59.1)	500 (19.7)	420 (16.5)	1	NSYPLA1554	NSYPLA1554T	NSYPLAZ1554
1500 (59.1)	750 (29.5)	320 (12.6)	1	NSYPLA1573	NSYPLA1573T	NSYPLAZ1573
1500 (59.1)	750 (29.5)	420 (16.5)	1	NSYPLA1574	NSYPLA1574T	NSYPLAZ1574
1500 (59.1)	1000 (39.4)	320 (12.6)	2	NSYPLA15103	NSYPLA15103T	NSYPLAZ15103
1500 (59.1)	1000 (39.4)	420 (16.5)	2	NSYPLA15104	NSYPLA15104T	NSYPLAZ15104
1500 (59.1)	1250 (49.2)	320 (12.6)	2	NSYPLA15123	NSYPLA15123T	NSYPLAZ15123
1500 (59.1)	1250 (49.2)	420 (16.5)	2	NSYPLA15124	NSYPLA15124T	NSYPLAZ15124



New! **Ventilation systems with filters**

Specially recommended for installations in which the ambient temperature is lower than the desired temperature inside the enclosure, a high protection rating is required: IP54 or IP55, and the surrounding environment is relatively clean, allowing air to enter the enclosure.

- 38 to 850 m³/h.
- 5 input voltages: AC: 400/440 V, 230 V, 115 V (50/60 Hz), DC: 48 V and 24 V.
- Broad range of accessories (filters, IP55 and EMC covers, anti-vandalism kit).



New! **Cooling units**

Cooling units control the temperature inside the enclosure to help ensure the correct operation of the components, regardless of the outside temperature, by separating the internal and external air circuits and reducing the humidity of the enclosure.

- Cooling power from 1100 W to 2700 W.
- According to the input voltage: 230 V (50/60 Hz); 3 X 400/440 V (50/60 Hz); 115 V (50/60 Hz).
- RAL 7035 gray and stainless steel.
- A minimum height of 1800 mm (70.9 in) and door width of 800 mm (31.5 in) or side panel width of 600 mm (23.6 in) is required to install a SLIM cooling unit in a Spacial enclosure.



New! **Thermal control**

Thermostats control the temperature inside the enclosure and send a signal when maximum or minimum temperature values have been reached.

- Temperature control: adjustable thermostats; single or double.
- Relative humidity control: adjustable humidistat.
- Temperature and relative humidity control: adjustable hygrotherm.