

### Fusible Pullouts

---

Class T Fusible Pullouts	1-2
Dimensions	1-2

### Circuit Breaker Covers

---

Circuit Breaker Covers	1-3
Dimensions	1-3

Refer to Catalog 1100CT0501

### Class T Fusible Pullouts

- 2- or 3-pole fusible pullouts
- 200 A maximum 300 V Class T fuses (not included)
- 1Ø3W 120/240 V  
1Ø2W 240 V
- 3Ø3W 240 V delta  
3Ø4W 240/120 V delta  
3Ø4W 208Y/120 V
- UL Listed 100 kA short circuit current rating



FTL2200



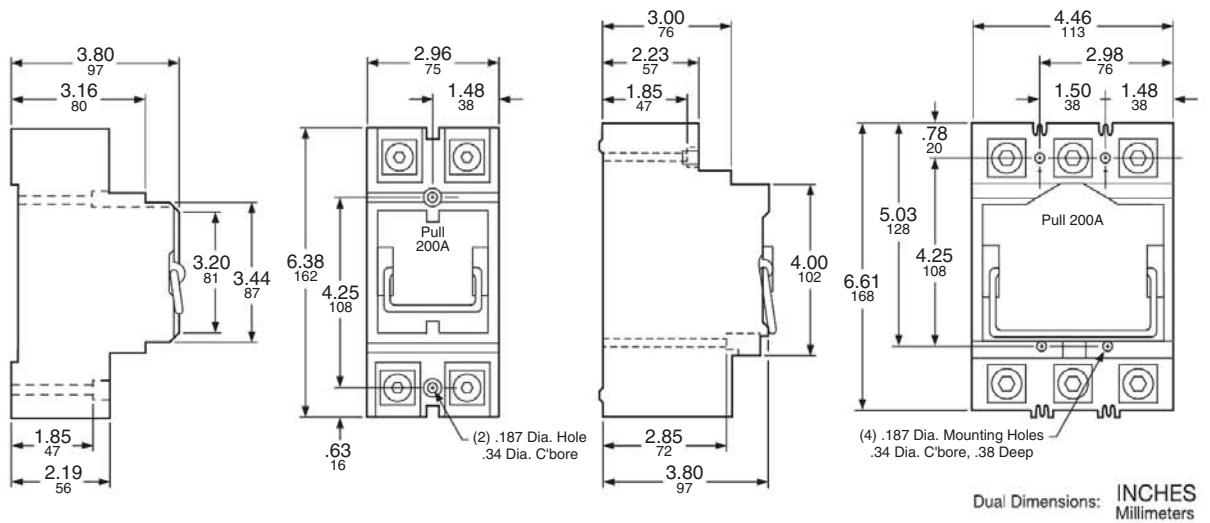
FTL3200

**Table 1.1: Fusible Pullouts**

Mains		Two-pole		Three-pole		Main Wire Size AWG/kcmil	Fuse Pullout Only	\$ Price
System	Rating	Cat. No.	\$ Price	Cat. No.	\$ Price	Al or Cu		
1Ø3W 120/240 V 1Ø2W 240 V	100 A	<a href="#">FTL2100▲</a>	380.00	—	—	4-250	<a href="#">4050704950▲</a>	128.00
	200 A	<a href="#">FTL2200▲</a>	400.00	—	—		<a href="#">4050703850▲</a>	151.00
3Ø3W 240 V delta 3Ø4W 240/120 V delta 3Ø4W 208Y/120 V	100 A	—	—	<a href="#">FTL3100</a>	1000.00		<a href="#">4050707050▲</a>	196.00
	200 A	—	—	<a href="#">FTL3200</a>	1045.00		<a href="#">4050705950▲</a>	288.00

▲ Not stocked in PDS. Order point Lexington.

### Dimensions



**Circuit Breaker Covers**

Available now from Square D™ / Schneider Electric™ are two different versions of rainproof circuit breaker covers which are UL component recognized as being suitable for use as circuit breaker handle covers.

They are constructed of durable impact-resistant material and are intended for use by OEMs where a rainproof cover is needed (e.g. on heat pumps and air conditioners with built-in disconnects). Both models have a built-in latch with padlock provisions.

The BCH covers are for use on a horizontally-mounted circuit breaker and fit over Square D two-pole QO™, QOU, Q2, EH and three-pole Q2 and EH circuit breakers.

The BCV covers are for use on vertically-mounted circuit breakers and will fit over Square D two- and three-pole QO, QOU, Q2, EH, FA and KA circuit breakers.

**Table 1.2: Covers**

Quantity	Cat. No.	\$ Price
1	BCH	20.50
1	BCV	20.50

**Dimensions**

