



e2c 67

Backplanes, PlugBoxes, BusHeads

0941 UNC...



Backplanes

e2c 67 Backplane Bus Connections for 4-, 6 and 8-Port I/O Modules

Part No.

0941 UNC 010
0941 UNC 020
0941 UNC 030

0941 DNC...



PlugBox-DeviceNet

0941 DNC 101: M12, 5-Pole Male (In) and Female (Out) Bus Connection with 7/8", 4-Pole Male for Auxillary Power.

0941 DNC 301: 7/8", 5-Pole Male (In) and Female (Out) Bus Connection with 7/8", 4-Pole Male for Auxillary Power.

Part No.

0941 DNC 101
0941 DNC 301

0941 PNC...



PlugBox-Profibus

0941 PNC 101: M12, 5-Pole Male (In) and Female (Out) Bus Connection with 7/8", 5-Pole Male for Auxillary Power.

0941 PNC 103: M12, 5-Pole Male (In) and Female (Out) Bus Connection with M23, 6-Pole Male for Auxillary Power.

0941 PNC 201: M23, 12-Pole Female (In) and Female (Out) Bus Connection with M23, 6-Pole Male for Auxillary Power.

Part No.

0941 PNC 101
0941 PNC 103
0941 PNC 201

0941 INC 201



PlugBox-Interbus

e2c 67 PlugBox for Interbus, M23, 9-Pole Male (In) and Female (Out) Bus Connection with M23, 6-Pole Male for Auxillary Power.

Part No.

0941 INC 201

0940 DSL 001 | 0940 PSL 001 | 0940 ISL 001



BusHead

0940 DSL 001: DeviceNet-Slave
 0940 PSL 001: Profibus-Slave
 0940 ISL 001: Interbus-Slave

Part No.

0940 DSL 001
0940 PSL 001
0940 ISL 001



e2c 67
I/O Modules

0942 UEM 011 | 0942 UEM 101 | 0942 UEM 102 | 0942 UEM 013



4 IN digital

- 0942 UEM 011: Group Diagnostic M12 Sensor Connection
- 0942 UEM 101: Counter Module M12 Sensor Connection
- 0942 UEM 102: Single-Channel Diagnostic M12 Sensor Connection
- 0942 UEM 013: P/N Single-Channel Diagnostic M12 Sensor Connection

Part No.

- 0942 UEM 011
- 0942 UEM 101
- 0942 UEM 102
- 0942 UEM 013

0942 UEM 012 | 0942 UEM 014 | 0942 UEM 019



8 IN digital

- 0942 UEM 012: Group Diagnostic M12 Sensor Connection
- 0942 UEM 014: Group Diagnostic, Coupling from Actuator/Sensor Distribution Boxes via M23 Female Connector, 12-Poles
- 0942 UEM 019: Group Diagnostic, Coupling from M8 Distribution Box SBS 4/LED 3 via M12 Female Connector, 8-Poles

Part No.

- 0942 UEM 012
- 0942 UEM 014
- 0942 UEM 019

0942 UEM 032 | 0942 UEM 034



4 IN analog

- 0942 UEM 032: Single-Channel Diagnostic Free Parameterizing
- 0942 UEM 034: To Connect RTD Resistance Thermometers with Galvanic Isolation, Single-Channel Diagnostic, M12 Sensor Connection

Part No.

- 0942 UEM 032
- 0942 UEM 034

0942 UEM 021 | 0942 UEM 026



4 OUT digital

- 0942 UEM 021: 2 A Per Channel, Single-Channel Diagnostic, M12 Actuator Connection
- 0942 UEM 026: Single-Channel Diagnostic, M12 Actuator Connection, External Power Supply

Part No.

- 0942 UEM 021
- 0942 UEM 026

e2c 67



e2c 67 I/O Modules

0942 UEM 022 | 0942 UEM 201 | 0942 UEM 205 | 0942 UEM 027



8 OUT digital

0942 UEM 022: , 0.5 A Per Channel, Group Diagnostic with Broken Wire Detection (150 mA), M12 Actuator Connection

0942 UEM 201: 0.5 A Per Channel, Group Diagnostic, M12 Actuator Connection

0942 UEM 205: 0.5 A Per Channel, Group Diagnostic, M12 Actuator Connection, External Power Supply

0942 UEM 027: Group Diagnostic, Coupling from Actuator/Sensor Distribution Boxes via M23 Female Connector, 12-Poles.

Part No.

0942 UEM 022

0942 UEM 201

0942 UEM 205

0942 UEM 027

0942 UEM 203



16 OUT digital

e2c 67 I/O Module with 16 Digital outputs, 0.1 A Per Channel, Single Channel Diagnostic, M23 Actuator Connection, 19-Poles.

Part No.

0942 UEM 203

0942 UEM 040 | 0942 UEM 041



2 OUT analog

0942 UEM 040: Single Channel Diagnostic, Output Range ± 10 V, Parameterizing, M12 Actuator Connection.

0942 UEM 041: Single Channel Diagnostic, Output Range ± 20 ma / 4-20mA, Parameterizing, M12 Actuator Connection.

Part No.

0942 UEM 040

0942 UEM 041

0941 UNC 100



Cover Box

e2c 67 Cover Box for Un-used Slots on the Backplane.

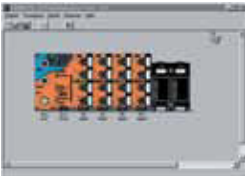
Part No.

0941 UEM 100



e2c 67
I/O Accessories

0947 USW 100



Configuration Tool

The Diagnostic Parameters of the e2c 67 System can be Changed by the CoDi Configuration and Diagnostic Software.

Part No.

0947 USW 100

0943 UTL 101



Programming Serial Cable

Used exclusive for communicating to the BusHead.

Part No.

0943 UTL 101

0943 UTL 501



Programming Parallel Cable

Used exclusive for communicating to the BusHead.

Part No.

0943 UTL 501

e2c 67



LioN-Link

BusHeads, I/O Modules

0940 DSL 601 | 0940 PSL 60.. | 0940 ESL 601 | 0940 CSL 601



LioN-Link BusHeads

LioN-Link-BusHead IP 67 Bus Coupler Modules for the Connection Between the Higher Level Fieldbus and the Fieldbus Independent I/O Modules, with M12 Bus Connection, Rotary Switches for Addressing and M12 LioN-Link Connection. M12 Power Supply Connection.

- 0940 DSL 601: DeviceNet Slave
- 0940 PSL 601: Profibus Slave
- 0940 PSL 602 (DP V1): Profibus-Slave, Supports Profibus DP-V1
- 0940 PSL 603: Profibus-Slave, for Applications Such as Tool Change or Options Handling with LioN-Link I/O Module 0942 UEM 670
- 0940 ESL 601: Profinet-I/O Device Slave (Profinet LAN)
- 0940 CSL 601: CANopen[®]-Slave

Part No.

- 0940 DSL 601
- 0940 PSL 601
- 0940 PSL 602
- 0940 PSL 603
- 0940 ESL 601
- 0940 CSL 601

0942 UEM 650



8 IN/8 OUT Universal

LioN-Link I/O Module with 8 Digital I/O Channels. Channels can be Used Universally as Inputs or Outputs, M8 Sockets (8x), 3-Poles, M12 Actuator Supply.

Part No.

- 0942 UEM 650

0942 UEM 651



8 IN

LioN-Link I/O Module with 8 Digital Inputs to Connect Standard Sensors, M8 Sockets (8x), 3-Poles

Part No.

- 0942 UEM 651



LioN-Link I/O Modules

0942 UEM 600



8 IN/8 OUT Universal

LioN-Link I/O Module with 8 Digital I/O Channels, Channels can be used Universally as Inputs or Outputs, M12 Sockets (4 x), 5 poles, M12 Actuator Supply.

Part No.

0942 UEM 600

0942 UEM 601



8 IN

LioN-Link I/O Module with 8 Digital Inputs to Connect Standard Sensors, M12 Sockets (4 x), 5 poles.

Part No.

0942 UEM 601

0942 UEM 630



4 IN analog

LioN-Link I/O Module with 4 Analog Inputs 0(4)–20 mA to Connect Standard Sensors, M12 Sockets (4x), 5 Poles.

Part No.

0942 UEM 630

0942 UEM 631



4 IN analog

LioN-Link I/O Module with 4 Analog Inputs 0–10 V to Connect Standard Sensors, M12 Sockets (4x), 5 Poles.

Part No.

0942 UEM 631



LioN-Link I/O Modules

0942 UEM 700



16 IN/16 OUT Universal

LioN-Link I/O Module with 16 Digital I/O Channels, Channels can be used Universally as Inputs or Outputs, M12 Sockets (8 x), 5 Poles, 7/8" Actuator Supply.

Part No.

0942 UEM 700

0942 UEM 701



16 IN

LioN-Link I/O Module with 16 Digital Inputs to Connect Standard Sensors, M12 Sockets (8 x), 5 Poles.

Part No.

0942 UEM 701

0942 UEM 780/5 M



16 IN/16 OUT Universal

LioN-Link I/O Module with 16 Digital I/O Channels, Channels can be used Universally as Inputs or Outputs, Multipole Cable Interface to Connect Valve Terminals, Control Consoles, Manual tool Changing Devices, IP20 Terminal Boxes.

Part No.

0942 UEM 780/5 M

0942 UEM 782/1 M



16 OUT

LioN-Link I/O Module with 16 Digital Outputs, Multipole Cable Interface to Connect Valve Terminals, Manual Tool Changing Devices, IP20 Terminal Boxes.

Part No.

0942 UEM 782/1 M



LioN-Link
I/O Modules

0942 UEM 783



Motion-Module

LioN-Link Motion Module with 8 Digital Inputs and 4 Universal Outputs that can be Configured for the Connection of Brushless Motors, DC Motors or for Valves. System Specific Specifications Such as Speed and Acceleration/Deceleration can be Transmitted via the DP-V1* Protocol. Power Supply is via a Connecting Cable with 7/8" Connector.

Part No.

0942 UEM 783

* = Only with 0940 PSL 602 or 0940 ESL 601

0942 UEM 670



8 IN/8 OUT Universal

LioN-Link I/ O Module with 8 Digital I/O Channels, Channels can be used Universally as Inputs or Outputs, M8 Sockets, 3 Poles

Input or Output Functionality can be Switched off while Retaining the Respective Address Range*.

Part No.

0942 UEM 670

* = Only with 0940 PSL 603

0942 UEM 602



4 OUT

LioN-Link I/O Module with 4 Digital Outputs, M12 Sockets (4 x), 5 Poles, 2 A per Channel, One Channel per Socket.

Part No.

0942 UEM 602

0942 UEM 612



4 OUT

LioN-Link I/O Module with 4 Digital Outputs, M12 Sockets (4 x), 5 Poles, M12 Actuator Supply, 2 A per Channel, One Channel per Socket.

– Suitable for Safety Critical Applications within Performance Levels A through D –

Part No.

0942 UEM 612



LioN-Link

I/O Modules, Power Supply

0942 UEM 620



4 IN/4 OUT Universal

LioN-Link I/O Module with 4 I/O-Link Channels, each Channel can be Configured Universally in Standard Digital I/O Mode (SIO Mode) or in Communications Mode, M12 Sockets, 4 Poles

– Only with BusHead 0940 PSL 602 or ProfiNet BusHead 0940 ESL 601 –

Part No.

0942 UEM 620

0941 UNC 601/10 M



Power Distribution Box

LioN-Link Power Distributor, 4x M12 Ports, 2 Potential Circuits, 10 m Lead with 5x1 mm²

Part No.

0941 UNC 601/10 M



LioN-Link
Wiring Accessories BusHead

0940 PSL 601	0940 CSL 601	Bus Connection, 5-Poles	Part No.	Description		
			0975 254 10...	Profibus signal cable, M12, B coded CAN/DeviceNet signal cable, Thin Cable, M12		
			0975 253 10...			
			0979 PTX 101	Profibus terminating resistor, M12, B coded CAN/DeviceNet terminating resistor, M12		
			0939 CTX 101			
				LioN-Link connection, 5-Poles	Part No.	Description
					0935 253 10...	CAN/DeviceNet signal cable, Thin Cable, M12
					RST 5...	Actuator / sensor cordset, M12 male connector with molded cable
					RK(W)T 5...	
					RST 5-RKT 5...	Actuator / sensor double-ended cordset, M12 male to M12 female connector
			RSC(W) 5/9	Field attachable connector, M12 male or male right angle connector or M12 female or female right angle connector, with threaded joint		
			RKC(W) 5/9			
		Power supply connection, 5-Poles	Part No.	Description		
			RKT 5...	Actuator / sensor cordset, M12 female or female right angle connector with molded cable		
			RKWT 5...			
			0906 UTP 101	T-connector with M12 male/female connector, 5 poles		

LioN-Link



LioN-Link

Wiring Accessories I/O Modules

0942 UEM 60.../63...	0942 UEM 65...	LioN-Link Connection , 5-Poles	Part No.	Description
			0935 253 10...	CAN/ DeviceNet signal cable, Thin Cable, M12
			RST 5...	Actuator / sensor cordset, M12 male connector with molded cable
			RK(W)T 5...	Actuator / sensor cordset, M12 female or female right angle connector with molded cable
			RST 5-RKT 5...	Actuator / sensor double-ended cordset, M12 male to M12 female connector
			RSC(W) 5/9 RKC(W) 5/9	Field attachable connector, M12 male or male right angle connector or M12 female or female right angle connector, with threaded joint
			0906 UTP 104	T-connector/ splitter, 2-way, with mounting hole, M12 female connector with two M12 male connectors, 5-poles
		Actuator/sensor connection, 3 and 5 Poles	Part No.	Description
			RSMV...	Actuator / sensor cordset, M8 male connector with molded cable
			RSMC... RSMCW...	Field attachable connector, M8 male/ male right angle connector, with threaded joint
			RST...	Actuator / sensor cordset, M12 male connector with molded cable
			RSMV-RKM(W)... RST-RKM...	Actuator / sensor double-ended cordset, M8/M12 male connector and M8/M12 female/ female right angle connector
			RSC... RKCW...	Field attachable connector, M12 male or male right angle connector, with threaded joint
		Power supply connection, 5-Poles	Part No.	Description
			RKT 5... RKWT 5... RKT 5-226/...M	Actuator / sensor cordset, M12 female or female right angle connector with molded cable
			0906 UTP 101	T-connector with M12 male/female connector, 5 poles



LioN-Link
Wiring Accessories I/O Modules

0942 UEM 78...	0942 UEM 70...	Power supply connection, 5-Poles	Part No.	Description	
			RKT 5... RKWT 5...	Actuator / sensor cordset, M12 female or female right angle connector with molded cable	
			0905 204 3...	Power supply double, 7/ 8", single or double ended, straight or angular	
			RKC 50... RSC 50...	Field attachable connector, 7/8" female or male straight connector with threaded joint	
		<th>Actuator/sensor connection, 5 Poles</th> <th>Part No.</th> <th>Description</th>	Actuator/sensor connection, 5 Poles	Part No.	Description
			RST 5...	Actuator / sensor cordset, M12 male connector with molded cable	
			RST 5-RKT 5...	Actuator / sensor double-ended cordset, M12 male to M12 female connector	
			RSC... RKCW...	Field attachable connector, M12 male or male right angle connector, with threaded joint	
		<th>LioN-Link Connection , 5-Poles</th> <th>Part No.</th> <th>Description</th>	LioN-Link Connection , 5-Poles	Part No.	Description
			0935 253 10...	CAN/ DeviceNet signal cable, Thin Cable, M12	
			RST 5...	Actuator / sensor cordset, M12 male connector with molded cable	
		RK(W)T 5...	Actuator / sensor cordset, M12 female or female right angle connector with molded cable		
		RST 5-RKT 5...	Actuator / sensor double-ended cordset, M12 male to M12 female connector		
		RSC(W) 5/9 RKC(W) 5/9	Field attachable connector, M12 male or male right angle connector or M12 female or female right angle connector, with threaded joint		

LioN-Link