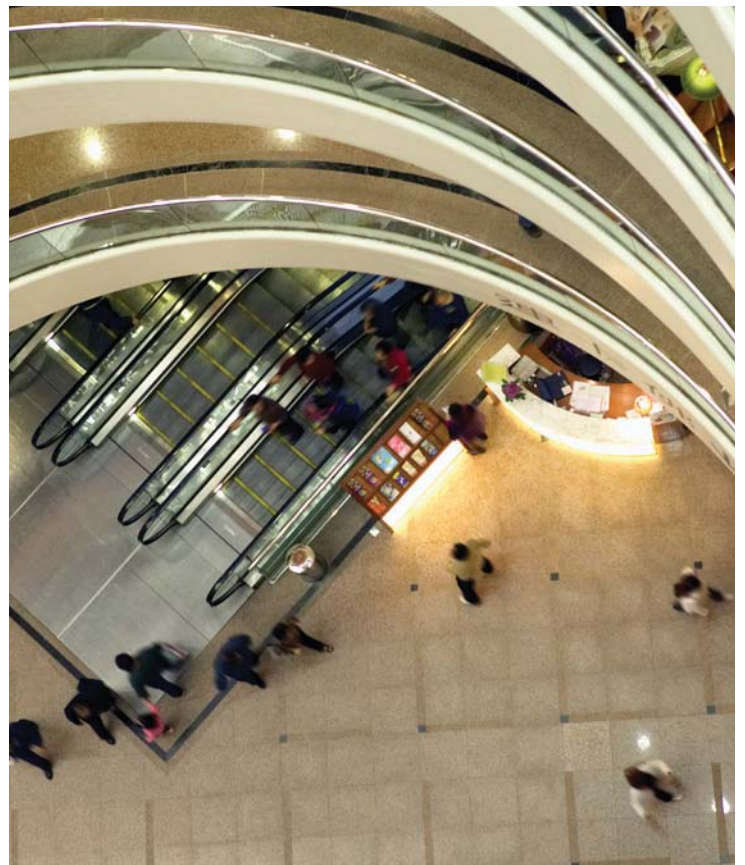
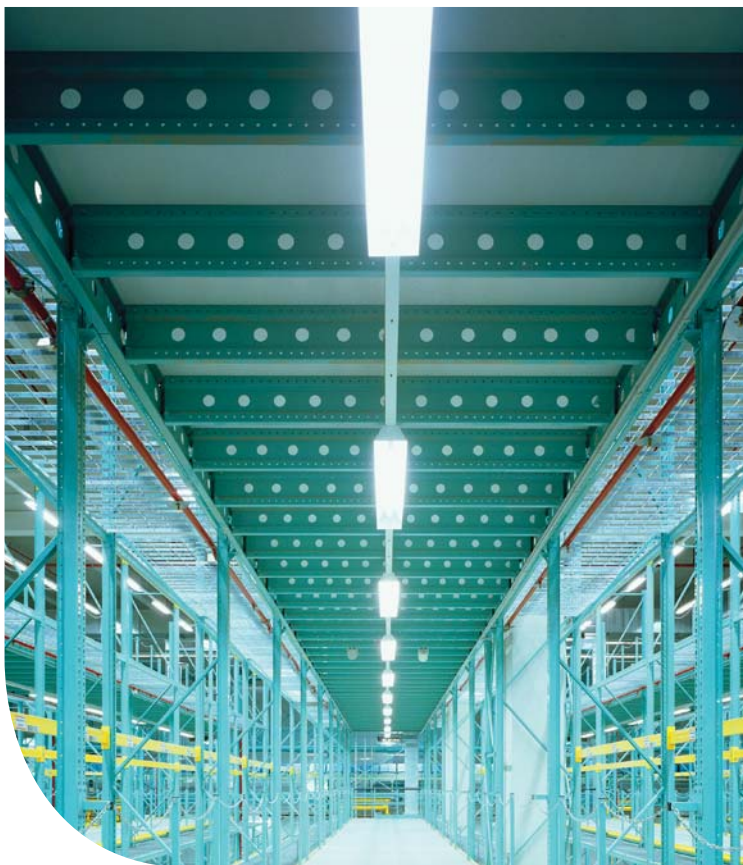
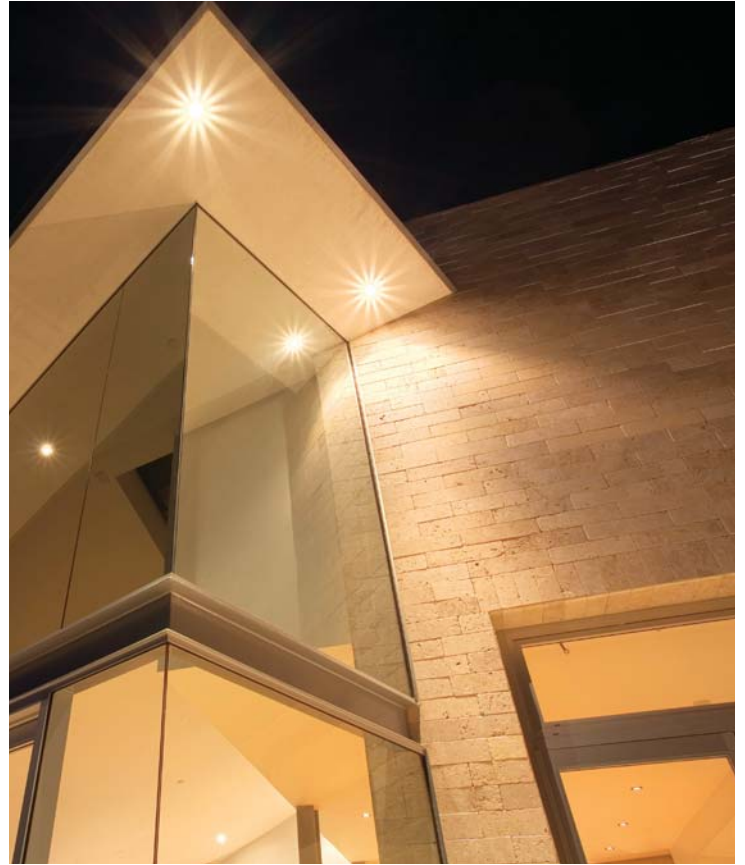


# Smart Products. Ingenious Solutions.

Wiring Devices, Energy Management  
Solutions and Commercial Data  
Infrastructure Products

L-200





## Power Distribution

	INDEX
	Commercial Grade
FLX Series .....	463
Switched Series .....	464
Metered Series .....	465
P1000 Series .....	466
5500 & 5505 Series .....	467
4500 Series .....	468

## Commercial Grade

### Rack Mount Power Distribution Units (PDUs)

Servers, storage and networking equipment can only perform as well as the power that drives it. Provide robust, reliable power to rack and cabinet applications with Leviton Power Distribution Units (PDUs). For the ultimate in flexibility, select your own feature set with the new make-to-order FLX Series. Or choose from a wide variety of horizontal and vertical models in switched, metered or unmetered configurations, with and without surge protection.



Smart Meter Technology



Flexible Mounting Options

### Specifications and Features

#### FLX Series

- 5,000+ customized configurations delivered in days available in Monitored, Enhanced Metered, and Metered and Connected Versions.

#### Switched Series

- Remote management allows control and reboot of each outlet via a network connection

#### Metered Series

- Current meter allows local monitoring of amperage to prevent current overload

#### P1000 Series

- Robust power distribution for data centers, server rooms, and other “always on” environments

#### 5500/5505 Series

- Surge-protected power distribution for rack-mounted equipment

#### 4500 Series

- Flexible and economical solution to power essential electronic equipment

### FLX Series PDUs

Choose Leviton's FLX Series PDUs to meet your power needs in any application. All orders are custom-built to your specifications, and with more than 5,000 possible configurations, you're sure to find the ideal combination of features. The 70" PDUs mount vertically in racks or cabinets, and feature data center quality construction and componentry.

#### Specifications and Features

- NEW! Monitored PDUs include network monitoring capabilities, SNMP alerts, power trending information, and environmental data
- NEW! Enhanced Metered PDUs allow monitoring with serial connection to Monitored PDUs
- Most configurations typically ship within three days
- 3-year limited product warranty

#### NEW! Network Monitoring

- Remote monitoring over standard Ethernet connection
- Built-in web interface for ease of management
- Integrated memory allows for onboard storage of historical data
- Monitor four PDUs with three Enhanced Metered and one (master) Monitored PDU
- Integrated ports allow up to two temperature/humidity probes per PDU

#### Smart Meter Technology™

- NEW! Enhanced Metered models connect to master Monitored PDU for cost-effective monitoring
- Displays amps, volts and watts
- Amperage and wattage accuracy: +/- 2%
- Voltage accuracy: +/- 1%
- Auto scrolling feature on 3-Phase units to show readings per load bank
- Gravity sensor detects PDU orientation and auto-inverts display

#### Data Center Ready

- 18-gauge cold-rolled steel construction
- UL489 and dual-pole circuit breakers used when applicable
- DP-rated cords on 208V units
- Grounding stud allows easy and reliable grounding
- Labeling kit included for outlet and circuit labeling

#### Input Flexibility

- 120V, 208V, or 208V 3-Phase (WYE or Delta)
- 20, 30, 50, or 60 amp configurations
- Cord lengths from 3 to 15 feet
- 120V units available with locking or non-locking plugs

#### Output Flexibility

- Outlet types include: IEC C13 and C19; NEMA 5-20R and L6-20R
- 3-Phase units available with 120V or 208V output or a combination of both

#### Mounting Flexibility

- Standard and button mounting hardware included
- Cable management available for securing cords and improving aesthetics
- Optional adjustable rack-mounting bracket (PDUK-BKT) available for open-frame racks



Configure your FLX Series PDU at [www.leviton.com/configurator](http://www.leviton.com/configurator)

### Switched Series PDUs

#### Specifications and Features

- Remote individual outlet control allows shut down of unused outlets and remote rebooting of attached equipment
- Full featured network management provided via Web, SNMP, and Telnet allows remote access, configuration and management
- Power sequencing minimizes in-rush current and prevents circuit overload
- Provides SNMP alerts when power or environmental conditions exceed thresholds
- Firmware is easily upgraded via network download to installed units for future product enhancements
- External probe available separately for environmental monitoring



C & D (1.75" L x 17" W x 7" D)

#### SWITCHED SERIES VERTICAL POWER DISTRIBUTION UNITS

Description	Cat. No.	( Input Rating )	Input	( Output Rating )	Output
[A] 16 Receptacle w/modular cord*	SV161-1D1	120V 20A	*	120V	5-20R
16 Receptacle w/10 ft. power cord	SV161-1B1	120V 30A	L5-30P	120V	5-20R
[B] 16 Receptacle w/10 ft. power cord	SV162-1C2	208V 30A	L6-30P	208V	C13

\* 120V/20A PDUs need a Modular Power cord as shown in the "Accessories" below.

#### SWITCHED SERIES HORIZONTAL POWER DISTRIBUTION UNITS

Description	Cat. No.	( Input Rating )	Input	( Output Rating )	Output
[C] 8 Receptacle w/modular cord*	SH081-1D1	120V 20A	*	120V	5-20R
8 Receptacle w/10 ft. power cord	SH081-1B1	120V 30A	L5-30P	120V	5-20R
[D] 8 Receptacle w/10 ft. power cord	SH082-1C2	208V 30A	L6-30P	208V	C13

\* 120V/20A PDUs need a Modular Power cord as shown in the "Accessories" below.

#### ACCESSORIES

Description	Cat. No.
Modular Power Cord, C19 to 5-15P, 10 ft.	PCORD-G10
Modular Power Cord, C19 to 5-20P, 10 ft.	PCORD-A10
Modular Power Cord, C19 to L5-20P, 10 ft.	PCORD-H10
[E] Temperature & Relative Humidity Probe, 10 ft.	TCORD-010
Adjustable Mounting Bracket for Vertical PDU	PDURK-BKT

#### TESTING AND CODE COMPLIANCE

- UL 60950-1 Listed (File#E228302)

A= (44.4" L X 1.75" W X 2.25" D)  
 B= (49.5" L X 1.75" W X 2.25" D)

## Metered Series PDUs

### Specifications and Features

- LED display provides visible warning when current draw is close to maximum capacity thus avoiding circuit overload
- True RMS current monitoring prevents overloads in high-density computing environments
- Included mounting hardware allows attachment to most common cabinets and racks
- Available in vertical Zero-U and horizontal rack-mount styles
- Available in 120V and 208V configurations with 20 or 30 amps
- A wide variety of input and output options ensures the flexibility to adapt to varying power requirements



C & D (1.75"L x 17.25"W x 5"D)



E

### METERED SERIES VERTICAL POWER DISTRIBUTION UNITS

Description	Cat. No.	( Input Rating )	Input	( Output Rating )	Output
[A] 12 Receptacle w/modular cord*	MV121-1D1	120V 20A	*	120V	5-20R
12 Receptacle w/10 ft. power cord	MV121-1B1	120V 30A	L5-30P	120V	5-20R
24 Receptacle w/Modular cord*	MV241-1D1	120V 20A	*	120V	5-20R
24 Receptacle w/10 ft. power cord	MV241-1B1	120V 30A	L5-30P	120V	5-20R
[B] 12 Receptacle w/10 ft. power cord	MV122-1C2	208V 30A	L6-30P	208V	C13
24 Receptacle w/10 ft. power cord	MV242-1C2	208V 30A	L6-30P	208V	C13
21 Receptacle w/10 ft. power cord	MV213-1E2 (3 Phase)	208V 20A	L21-20P	208V	C13

\* 120V/20A PDUs need a Modular Power cord as shown in the "Accessories" below.

### METERED SERIES HORIZONTAL POWER DISTRIBUTION UNITS

Description	Cat. No.	( Input Rating )	Input	( Output Rating )	Output
[C] 10 Receptacle w/modular cord*	MH101-1D1	120V 20A	*	120V	5-20R
10 Receptacle w/10 ft. power cord	MH101-1B1	120V 30A	L5-30P	120V	5-20R
[D] 12 Receptacle w/10 ft. power cord	MH122-1C2	208V 30A	L6-30P	208V	C13

\* 120V/20A PDUs need a Modular Power cord as shown in the "Accessories" below.

### ACCESSORIES

Description	Cat. No.
[E] Modular Power Cord, C19 to 5-15P, 10ft.	PCORD-G10
Modular Power Cord, C19 to 5-20P, 10ft.	PCORD-A10
Modular Power Cord, C19 to L5-20P, 10ft.	PCORD-H10
Modular Power Cord, C19 to L5-20P, 15ft.	PCORD-H15
Adjustable Mounting Bracket for Vertical PDU	PDURK-BKT



A

B

A (31.25"L x 1.75"W x 2.25"D)

B (31.25"L x 1.75"W x 2.25"D)

### TESTING AND CODE COMPLIANCE

- UL 60950-1 Listed (#E228302)

## Commercial Grade

## P1000 Series PDUs

### Specifications and Features

- All models feature circuit breaker protection to prevent current overloads
- 208V PDUs come with 2-pole circuit breakers for added safety
- Surge protected models prevent damage from transient surges
- LED indicators for power, grounding/polarity, and surge protection where applicable
- Available in 120V or 208V versions with 15-, 20- or 30-amp configurations
- Hardwired power input cord
- 18-gauge cold-rolled steel construction
- Available in vertical Zero-U or horizontal 19" rack-mount styles
- Mounting hardware included. Optional adjustable rack-mounting bracket available



D (17.5" L x 17.5"H x 4.5"D)



E (17.5" L x 1.75"H x 4.5"D)

### P1000 SERIES VERTICAL POWER DISTRIBUTION UNITS

Description	Cat. No.	Rating	Input	Output
16 Receptacle w/10 ft. power cord	P1040-10S	120V 15A	5-15P	5-15R
[A] 16 Receptacle w/10 ft. power cord	P1041-10S	120V 20A	5-20P	5-20R
16 Receptacle w/10 ft. power cord	P1042-10L	120V 20A	L5-20P	5-20R
24 Receptacle w/10 ft. power cord	P1043-10S	120V 20A	5-20P	5-20R
[B] 24 Receptacle w/10 ft. power cord	P1044-10L	120V 20A	L5-20P	5-20R
24 Receptacle w/10 ft. power cord	P1045-10L	120V 30A	L5-30P	5-20R
24 Receptacle w/10 ft. power cord	P1046-10L	208V 20A	L6-20P	C13
[C] 24 Receptacle w/10 ft. power cord	P1047-10L	208V 30A	L6-30P	C13

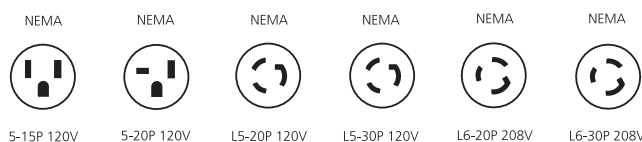
### P1000 SERIES HORIZONTAL POWER DISTRIBUTION UNITS

Description	Cat. No.	Rating	Input	Output
10 Receptacle w/12 ft. power cord	P1020-12S	120V 15A	5-15P	5-15R
[D] 10 Receptacle w/12 ft. power cord	P1021-12S	120V 20A	5-20P	5-20R
10 Receptacle w/12 ft. power cord	P1022-12L	120V 20A	L5-20P	5-20R
16 Receptacle w/12 ft. power cord	P1023-12L	120V 30A	L5-30P	5-20R
[E] 12 Receptacle w/12 ft. power cord	P1024-12L	208V 20A	L6-20P	C13
16 Receptacle w/12 ft. power cord	P1025-12L	208V 30A	L6-30P	C13

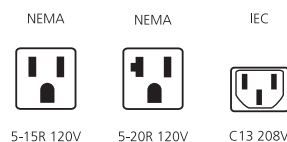
### P1070 SERIES VERTICAL POWER DISTRIBUTION UNITS

Description	Cat. No.	Rating	Input	Output
10 Receptacle w/12 ft. power cord	P1070-105V	120V 15A	5-15P	5-15R
10 Receptacle w/12 ft. power cord	P1071-105V	120V 20A	5-20P	5-20R
10 Receptacle w/12 ft. power cord	P1072-10L	120V 20A	L5-20P	5-20R
16 Receptacle w/12 ft. power cord	P1073-10S	120V 20A	5-20P	5-20R
12 Receptacle w/12 ft. power cord	P1074-10L	120V 20A	L5-20P	5-20R

#### INPUT PLUG TYPES



#### OUTPUT RECEPTACLE TYPES



### TESTING AND CODE COMPLIANCE

- UL 6095-1 listed (#E228302)
- UL 1449 Listed 3rd Edition # E228302 (P1070 Series only)



A (30"L x 1.8"W x 1.75"D)  
 B (48"L x 1.8"W x 1.75"D)  
 C (48"L x 2.19"W x 2"D)

### 5500 and 5505 Series PDUs

#### Specifications and Features

- Resettable circuit breaker to protect against overloading
- 12 receptacles —10 in back, 2 in front
- Available with either straight blade or locking input plug
- Mounts horizontally on 19" racks or cabinets

#### 5500 Series w/Enhanced Surge Protection

- Peak Surge Current: 72kA
- Clamping Voltage: 330V
- EMI/RFI noise filtering: 100kHz to 30MHz, -10dB to -35dB
- Joule rating: 1440
- Physical dimensions: 1.75"H x 19"W x 4.55"D

#### 5505 Series w/Surge Protection

- Peak Surge Current: 27kA
- Clamping Voltage: 400V
- EMI/RFI noise filtering: 100kHz to 30MHz, -5dB to -40dB
- Joule rating: 540
- Physical dimensions: 1.75"H x 19"W x 3"D



A (19" L x 1.75"H x 3"D)

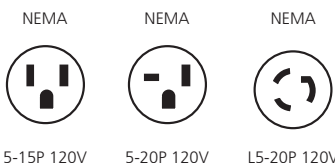


B (19" L x 1.75"H x 4.55"D)

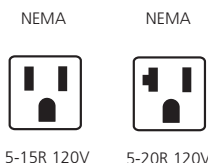
### 5500/5505 SERIES HORIZONTAL RACK MOUNT POWER DISTRIBUTION UNITS W/SURGE PROTECTION

Description	Cat. No.	Rating
With ON/OFF Switch, NEMA 5-15P St. Blade Plug	5500-190	15A 120V
Without ON/OFF Switch, NEMA 5-15P St. Blade Plug	5500-15N	15A 120V
With ON/OFF Switch, NEMA 5-20P St. Blade Plug	5500-192	20A 120V
[A] Without ON/OFF Switch, NEMA 5-20P St. Blade Plug	5500-20N	20A 120V
With ON/OFF Switch, NEMA L5-20P Locking Plug	5500-20L	20A 120V
Without ON/OFF Switch, NEMA L5-20P Locking Plug	5500-2NL	20A 120V
[B] With ON/OFF Switch, NEMA 5-15P St. Blade Plug	5505-190	15A 120V

#### INPUT PLUG TYPES



#### OUTPUT RECEPTACLE TYPES



#### TESTING AND CODE COMPLIANCE

- UL 1363 Recognized, # E118936
- UL 1449 Listed 2nd edition Feb. 2007 # E118936

## Commercial Grade

### 4500 Series PDUs

Leviton's 4500 Series Power Distribution Units (PDUs) provide you with the robust and economical solutions you need to power your vital electronic equipment. The 4500 Series offers flexibility and economy for use in diverse applications.

#### Specifications and Features

- Resettable circuit breaker provides overload protection
- Available in 15- or 20-amp versions
- 20-amp versions available with either straight blade or locking input plug
- Easy-access ON/OFF rocker switch
- 12 receptacles —10 in back, 2 in front
- Mounts horizontally on 19" racks or cabinets
- Physical dimensions: 1.75"H x 19"W x 3"D



A (19" L x 1.75"H x 3"D)



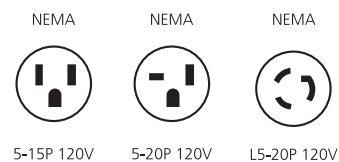
B (19" L x 1.75"H x 3"D)

### 4500 SERIES HORIZONTAL RACK MOUNT POWER DISTRIBUTION UNITS

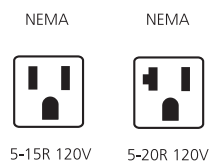
Description	Cat. No.	Rating	Input	Output
12 receptacles w/ 7 ft power cord	4515-07S	120V 15A	5-15P	5-15R
(A) 12 receptacles w/ 10 ft power cord	4515-10S	120V 15A	5-15P	5-15R
12 receptacles w/ 15 ft power cord	4515-15S	120V 15A	5-15P	5-15R
12 receptacles w/ 7 ft power cord	4520-07S	120V 20A	5-20P	5-20R
(B) 12 receptacles w/ 10 ft power cord	4520-10S	120V 20A	5-20P	5-20R
12 receptacles w/ 15 ft power cord	4520-15S	120V 20A	5-20P	5-20R
12 receptacles w/ 7 ft power cord	4520-07L*	120V 20A	L5-20P	5-20R
12 receptacles w/ 10 ft power cord	4520-10L*	120V 20A	L5-20P	5-20R
12 receptacles w/ 15 ft power cord	4520-15L*	120V 20A	L5-20P	5-20R

\* = 4520-07L (formerly 4505-20L), 4520-10L (formerly 4505-20T), 4520-15L formerly (4505-20F).

#### INPUT PLUG TYPES



#### OUTPUT RECEPTACLE TYPES



#### TESTING AND CODE COMPLIANCE

- UL 1363 recognized (#E118936).
- UL 6095-1 listed (#E228302).