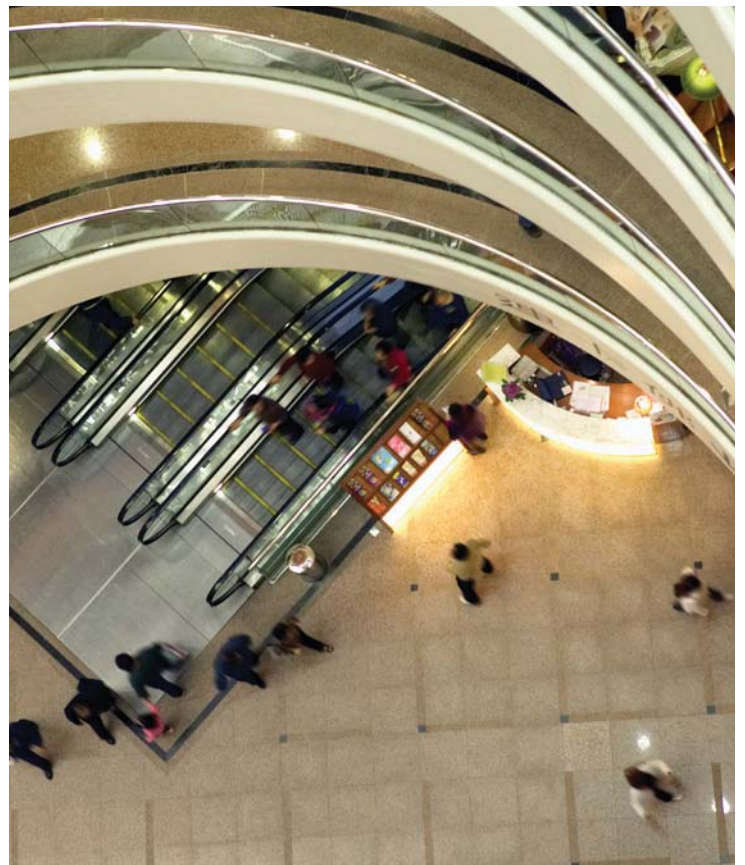
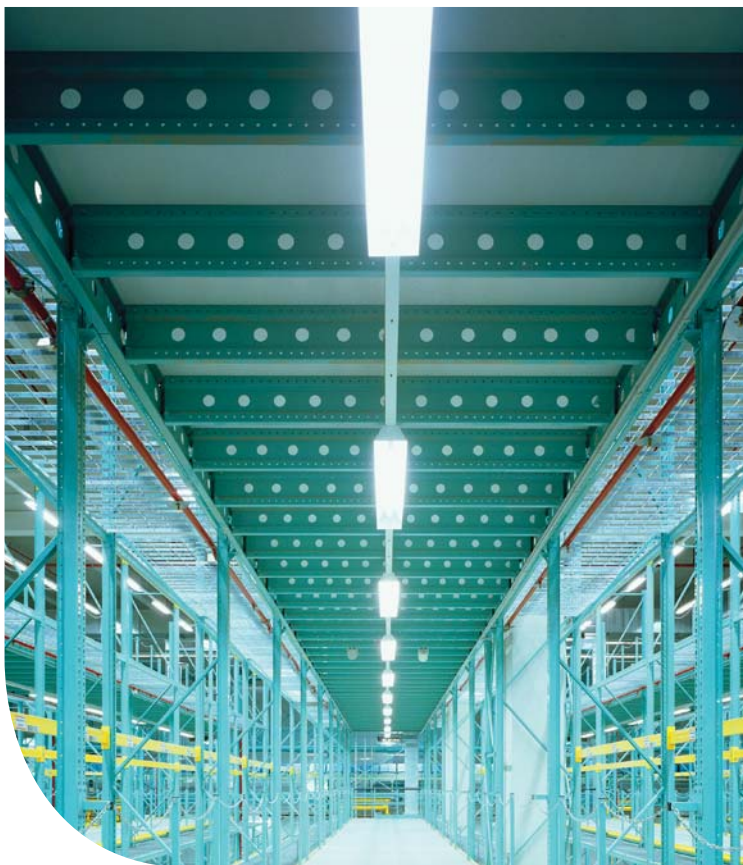
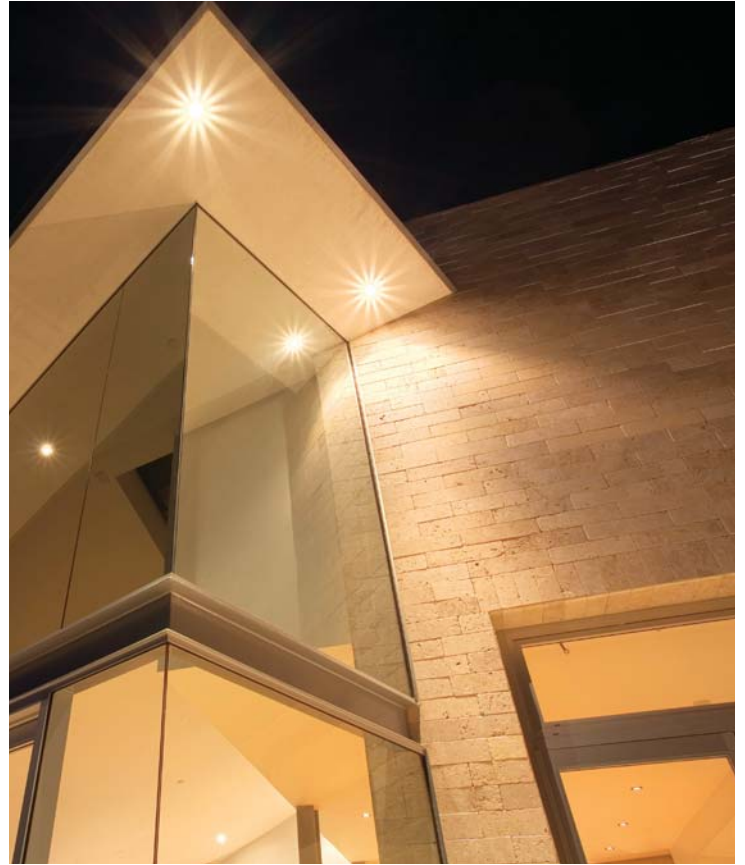
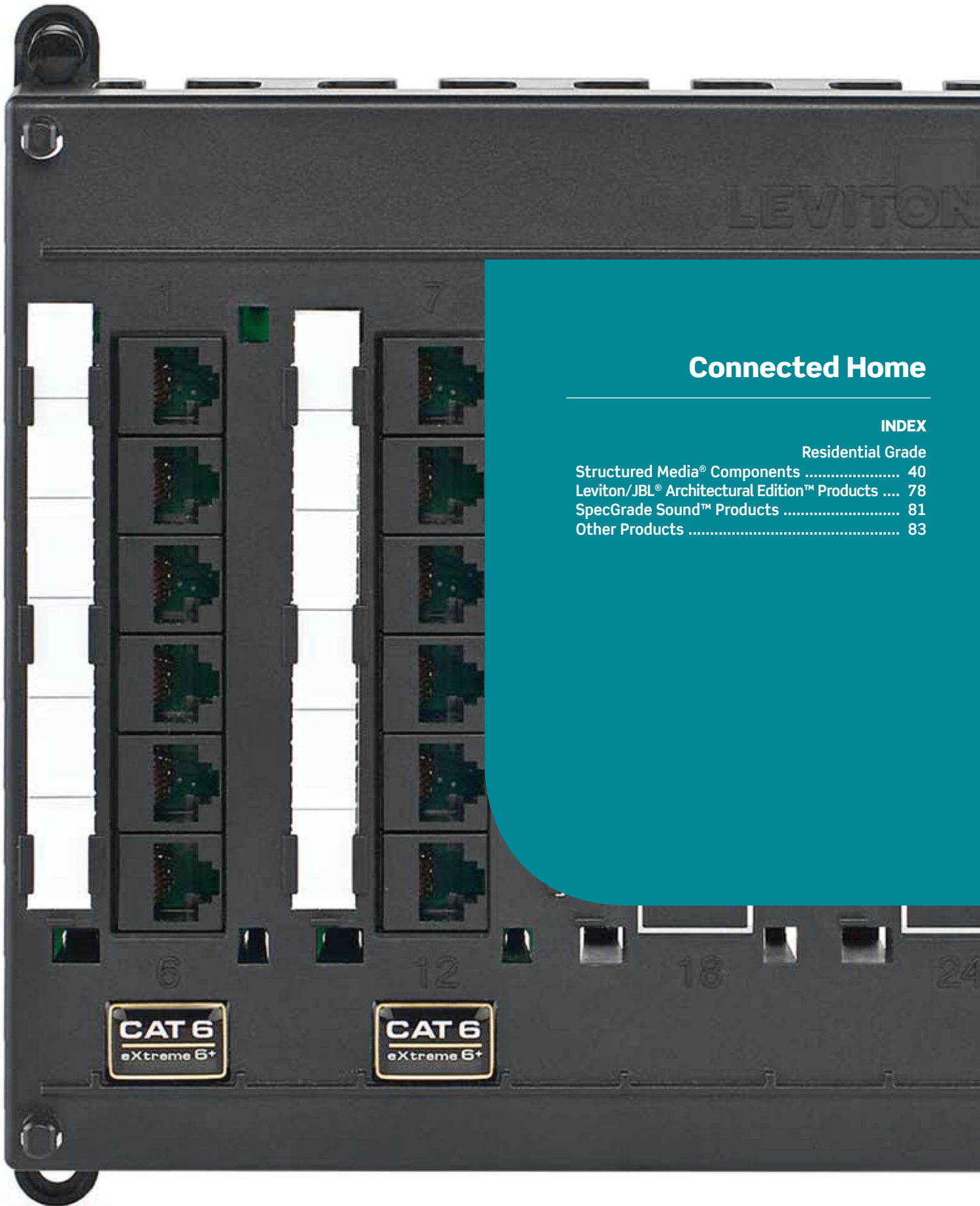


# Smart Products. Ingenious Solutions.

Wiring Devices, Energy Management  
Solutions and Commercial Data  
Infrastructure Products

L-200





## Connected Home

### INDEX

	Residential Grade
Structured Media® Components .....	40
Leviton/JBL® Architectural Edition™ Products ....	78
SpecGrade Sound™ Products .....	81
Other Products .....	83

## Residential Grade

### Connected Home Structured Media® Components

Today's home is part business, part school and part entertainment complex. Leviton has what you need to keep homeowners wired for the good things in life. Leviton meets these challenges by using the kind of structured cabling employed in demanding commercial facilities and combining it with multimedia. This approach provides the bandwidth and speed needed for voice, data and Internet access, audio and video. Set ups can be as simple as cable TV and telephone in a few rooms or as complex as a local area network (LAN) for a small office or large home.



## Structured Media® Enclosures

The 14" Enclosure is the entry level for home networking. This professional grade enclosure creates one distribution point for an apartment or smaller home for all low voltage cables. It accommodates two Pre-Configured Structured Cabling Panels and is built tough to make installation easier and help reduce labor costs.

The 28" and 42" Enclosures serve single family homes as command central for communications, education, entertainment, and business needs. They also offer an industry-first riser ready innovation, a time saving improvement for installers in the field. Both the 28" and the 42" Enclosures can easily accommodate DSL and cable Internet modems, networking, cable and satellite video. They also serve VoIP, IPTV, fax, multiple telephone lines, video monitoring cameras, intercom, and distributed audio. By bringing every conceivable technology distribution point together in one place, these enclosures make running cable and managing media both simple and cost effective. Incorporate a hospital grade power quality module for maximum protection from line surges.

The 28" Enclosure can comfortably accommodate up to eight distribution modules, depending on selection and density. The 42" Enclosure has generous capacity for up to 12 modules, and can also simultaneously accommodate many diverse functions. In larger homes, many contractors specify multiple Structured Media® Centers, sometimes separating coaxial cable-based CATV or Satellite TV equipment from the CAT 5e or CAT 6 UTP-based communications and networking equipment.

Please specify the appropriate size media center and allow for Module planning before you begin your project.

### Specifications and Features

- Choice of three enclosure sizes address different capacities and provide extensible functionality for "wired" homes
- Accommodates full width Pre-Configured Structured Cabling Panels, delivering audio/video, voice and data to any room of the home or office
- Positive tabs on housing sidewalls prevent enclosure from falling through the studs during installation
- One piece white steel unit holds full and half width expansion modules, panels and brackets
- Can be surface mounted or recessed
- Powder coated white cover features 3/4" overlap to hide irregular drywall cuts
- Upgrade to 28" or 42" Enclosures for larger installations or future expansion
- Multiple knock-outs on top and bottom, including two 2" knock-outs on top, facilitate cable entry and routing
- Cut out in base of enclosure for mounting single and double gang J-boxes and power modules
- Six 3" square self healing foam grommets accommodate and protect cable bundles and protect cables from being cut
- Holds 1/4, 1/2 and full-width expansion modules with the ability to mount most modules vertically or horizontally
- Mounting guides on the cover align screw holes and help to hold the cover in place during installation
- Threaded inserts added to enclosures ensure accurate threading of supplied machine screws when mounting cover
- Designed to accommodate safe, high quality hospital grade power module with transient voltage surge suppression
- Locking latch with key is available for hinged covers
- Job packed units save labor and reduce waste and clean up

## Residential Grade

### STRUCTURED MEDIA® CENTERS

#### 14-Inch (14" X 14.38" X 3.60"), Covers (15.32" X 15.62" X .25")



47605-14P

Description	Cat. No.	Materials
Enclosure and Flush Mount Cover	47605-140	Enclosure - White, Cover - White, powder-coated
Enclosure Only	47605-14E	White, powder-coated
Enclosure Only Job Packed, 6 Per Pack	47605-14G	White, powder-coated 20-gauge steel
Flush Cover Only Job Packed, 6 Per Pack	47605-14B	White, powder-coated 18-gauge steel
Flush Mount Cover	47605-14C	White, powder-coated 18-gauge steel
Hinged Cover	47605-14D	White, powder-coated 18-gauge steel
Premium Hinged Cover	47605-14P	White, powder-coated 18-gauge steel
Add-on Lock and Key	5L000-L0K	

#### 28-Inch (28" X 14.38" X 3.60"), Covers (29.32" X 15.62" X .20")



47605-28P

Description	Cat. No.	Materials
Enclosure and Flush Mount Cover	47605-28W	Enclosure - White, powder-coated 20-gauge steel Cover - White, powder-coated 18-gauge steel
Enclosure Only	47605-28N	White, powder-coated 20-gauge steel
Enclosure Only Job Packed, 6 Per Pack	47605-28G	White, powder-coated 20-gauge steel
Flush Cover Only Job Packed, 3 Per Pack	47605-28B	White, powder-coated 18-gauge steel
Flush Mount Cover	47605-F28	White, powder-coated 18-gauge steel
Hinged Cover	47605-28D	White, powder-coated 18-gauge steel
Premium Hinged Cover	47605-28P	White, powder-coated 18-gauge steel
Add-on Lock and Key	5L000-L0K	

#### 42-Inch (42" X 14.38" X 3.60"), Covers (43.32" X 15.62" X .20")



47605-28N

Description	Cat. No.	Materials
Enclosure and Flush Mount Cover	47605-42W	Enclosure - White, powder-coated 20-gauge steel Cover - White, powder-coated 18-gauge steel
Enclosure Only	47605-42N	White, powder-coated 20-gauge steel
Flush Mount Cover	47605-F42	White, powder-coated 18-gauge steel
Hinged Cover	47605-42D	White, powder-coated 18-gauge steel
Premium Hinged Cover	47605-42P	White, powder-coated 18-gauge steel
Add-on Lock and Key	5L000-L0K	

### STRUCTURED MEDIA CENTER CONFIGURATIONS

#### Configuration A

Description	Cat. No.
14" Multi-Dwelling Unit SMC With Flush Mount Cover	47605-1MG
28" Multi-Dwelling Unit SMC With Flush Mount Cover	47605-2MG
48" Multi-Dwelling Unit SMC With Flush Mount Cover	47605-4MG

**Configuration B**

Description	Cat. No.
28" Multi-Dwelling Unit SMC Enclosure Only	47605-M28
42" Multi-Dwelling Unit SMC Enclosure Only	47605-M42

**SMC Back Plates**

Description	Cat. No.
28" Structured Media® Center Pre-Fab Back Plate	47605-28P
42" Structured Media Center Pre-Fab Back Plate	47605-48P

**TESTING AND CODE COMPLIANCE**

- ACA and cULus Listed
- UL Listed for fire and burglary



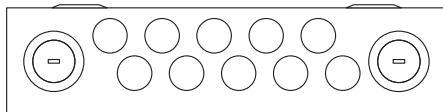
47605-42N



47605-42P

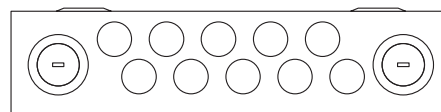
**DIMENSIONS**

MDU Configuration A

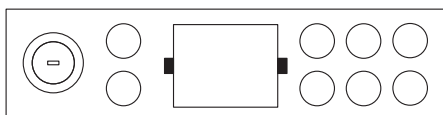


Top

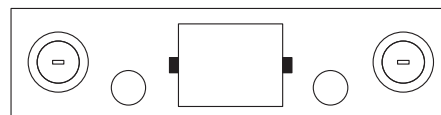
MDU Configuration B



Top



Bottom



Bottom

Knockout sizes support 1" and 2" commercial conduit.

## Residential Grade

### 28" and 42" Enclosure Extender Brackets

The Extender Brackets provide an additional 2" of depth and enhanced ventilation for the 28" and 42" Enclosures. The Extender Brackets attach between the enclosure and the cover to form a frame which has four 2" deep sheet metal rails with louvers on each side. The increase in depth allows for better cable management and for larger modules within the Structured Media® Center.

#### Specifications and Features

- Made of sturdy, white powder-coated 18-gauge sheet metal
- Louvers in the Extender Brackets enhance ventilation for added protection against heat build up from installed modules

### 28" AND 42" ENCLOSURE STRUCTURED MEDIA® CENTER EXTENDER BRACKETS

Description	Cat. No.	Dimensions
Extender Bracket 2" depth extension package for 28" Structured Media® Centers	47612-28B	24.25" H x 15.62" W x 2.81" D
Extender Bracket 2" depth extension package for 42" Structured Media Centers	47612-42B	43.25" H x 15.62" W x 2.81" D

#### Limited Warranties

Most Leviton Structured Media® products include a limited Two-Year product warranty. Leviton Residential Network Installers are authorized to provide a 25-Year limited product warranty on selected products.

### Media Versatile Panel™

The Media Versatile Panel was made for custom retrofits and remodeling. The 24" high steel panel has a securable door and can accommodate a wide variety of Structured Media Distribution Modules and other devices. This sturdy industrial grade panel can be surface mounted or recessed in the wall. In the case of non-standard stud spacing, optional mounting brackets may be used. The Media Versatile Panel is available in a black powder-coat finish.

#### Specifications and Features

- Eight 1" or 1.5" conduit fittings on top and bottom facilitate cable entry and routing
- Wall-mount or recess
- Ideal for new installations or retrofits
- Securable door provides maximum protection from dust and unauthorized entry
- Plywood backing allows open architecture for customizing layout and can accommodate a wide variety of Structured Media Distribution Modules



47602-24E

### MEDIA VERSATILE PANEL

Description	Cat. No.	Dimensions	Materials
Media Versatile Panel with Cover	47602-24E	24.0" (609.6mm) H x 14.0" (355.6mm) W x 600" (152.4mm) D	Powder coated 18 gauge steel with 3/8" plywood backing
Mounting Brackets, set of four	47602-BKE		

Media Versatile Panel™ is a trademark of Leviton Manufacturing Co., Inc.

#### TESTING AND CODE COMPLIANCE

- UL Listed

### Compact Structured Media® Enclosure

This unit is a compact, cost effective distribution point for media in smaller apartments and small condominiums. Easy to install, the Compact Structured Media Enclosure accommodates a variety of telephone and video configurations.

#### Specifications and Features

- Flexibility to accommodate a variety of telephone/video distribution configurations
- Snap-on cover requires no tools or fasteners
- Molded-in brackets provide quick snap-in convenience for Expansion Boards
- Angled video splitter shelf for easy installation
- Hosts up to three Expansion Boards and one Passive Video Splitter
- Available empty with cover or in two kit versions with a 1x6 Telephone Expansion Board or with a 1x6 Telephone Expansion Board and a 1 GHz 6-Way Splitter

### COMPACT STRUCTURED MEDIA ENCLOSURE

Description	Cat. No.	Dimensions	Materials
Compact Structured Media® Enclosure and Cover, empty	47605-MDU	8.03" (204.0mm) H x 14.40" (365.6mm) W x 3.71" (94.2mm) D	ABS molded plastic
Compact Structured Media Enclosure Cover only	47605-MDC	9.01" (228.9mm) H x 15.39" (390.8mm) W x 0.51" (13.0 mm) D	ABS molded plastic
MDU Kit (Compact Structured Media Enclosure and Cover plus 1x6 Telephone Expansion Board)	47604-0F6	8.03" (204.0mm) H x 14.40" (365.6mm) W x 3.71" (94.2mm) D	ABS molded plastic
MDU Kit (Compact Structured Media Enclosure and Cover plus 1x6 Telephone Expansion Board and 6-Way Splitter. 1 GHz)	47604-F6S	8.03" (204.0mm) H x 14.40" (365.6mm) W x 3.71" (94.2mm) D	ABS molded plastic



47604-F6S

#### TESTING AND CODE COMPLIANCE

- cULus Listing for Communications Equipment

## Residential Grade

### Mounting Brackets

Several different brackets mount a variety of Leviton or other devices and enhance the capability of the Structured Media® Centers. The Plastic Single Bracket accepts mounting of any single width Leviton expansion board, such as the phone, data, security or DSL Filter Board within the Structured Media Center. The Plastic Expansion Bracket is a full width bracket that can be populated with up to five Leviton phone, data, security or DSL Filter Expansion Boards. The universal design of the Plastic Data Bracket enables mounting of other manufacturers' switches, routers, broadband modems, media converters and FTTH gateways within Leviton's Structured Media Centers. The plastic half bracket accepts up to three Leviton single width expansion boards and the removable spines allow for all TLDM board mounting.

#### Specifications and Features

- All plastic brackets
- Made of sturdy white ABS plastic
- Comes with push-lock pins
- Snap-in installation in any 14" 28" or 42" Structured Media Center
- Allows for cable management via routing under bracket

### MOUNTING BRACKETS FOR ALL STRUCTURED MEDIA® CENTERS

Description	Cat. No.
Plastic Single Bracket for mounting a single width Leviton expansion board (e.g., phone, data, security or DSL Filter)	47612-SBK
Plastic Expansion Bracket for mounting up to five Leviton phone, data, security or DSL Filter Expansion Boards	47612-EBK
Plastic Shelf Bracket for mounting up to four Leviton phone, data, security or DSL Filter, Expansion Boards and a Passive Splitter on a Leviton Series 140, 280 or 420 Structured Media® Center	47612-VSB
Plastic Half-Bracket for mounting up to three leviton phone, data, security or DSL Filter Expansion Boards	47612-HBK
Plastic Data Bracket for mounting switches, routers, broadband modems, media converters, and FTTH gateways	47612-DBK



47612-SBK



47612-EBK



47612-HBK

### Multimedia Adapter Bracket and Mounting Plates

Create a custom audio/video, copper or fiber mini-panel in a Structured Media® Center with the Multimedia Adapter Bracket. The Bracket supports a choice of two 6-pack mounting plates and snaps easily into any of Leviton's Structured Media Centers with push-pins. Pre-loaded mounting plates are available for BNC and F-connectors, or create a custom configuration with unloaded 6-pack QuickPort® plates. QuickPort plates accept any combination of the following QuickPort adapters or connectors: BNC, F-Connector, ST, FC, SC and MT-RJ Fiber Optics, Banana Jacks, Speaker Binding Posts, RCA, S-Video, Voice Grade and Category 5, 5e or 6. Brackets mount vertically or horizontally.

#### Specifications and Features

##### Multimedia Adapter Bracket

- Made of white powder coated sheet metal
- Accepts up to two 5F100 Series 6-pack plates
- Comes with push-lock pins

##### 5F100 Series 6-Pack Plates

- Made of black powder coated sheet metal
- Comes with push-lock pins

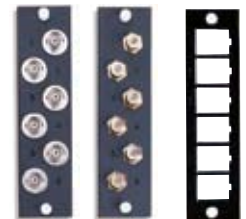
### MULTIMEDIA ADAPTER BRACKET

Description	Cat. No.
Multimedia Bracket	47612-MMA
BNC Mounting Plate, 6-pack, loaded	5F100-BNC
F-Connector Mounting Plate, 6-pack, loaded	5F100-6VF
QuickPort Mounting Plate, 6-pack, unloaded	5F100-6QP
8-Conductor Flat Telephone Patch Cord, 8" long (one each)	42400-8FG

QuickPort® is a registered trademark of Leviton Manufacturing, Inc.



47612-MMA



5F100-BNC/5F100-6VF/5F100-6QP

## Residential Grade

### Universal Security and Shelf Brackets

The Universal Security Brackets allow consolidation and integration of security products into any of Leviton's 14", 28" or 42" Structured Media® Center Enclosures. The 6" and 12" Universal Security brackets accommodate the widest variety of security alarm panels. The 1" wide Brackets are sold in pairs with self tapping screws and insulating spaces so you can easily attach them to the panels. The Universal Shelf Bracket provides space for security batteries of various sizes as well as other products to be mounted with Leviton's 14", 28" or 42" Structured Media Centers. The Bracket comes with four 8" long Velcro® strips to strap down products to the shelf, ensuring both vertical and horizontal stability.

#### Specifications and Features

##### All Security Brackets

- Made of white powder-coated sheet steel
- Comes with push-lock pins

##### Universal Security Brackets

- Allows an unlimited number of upgrades (limited only by the enclosure's size) to be added to an existing security system terminated within any Leviton Structured Media Center
- Sold in pairs with self-tapping screws and spacers to easily connect the largest number of security alarm manufacturers' panels

##### Universal Shelf Bracket

- Allows security batteries and other products to be mounted inside any Leviton Structured Media Center
- Vertical and horizontal slots on bracket to accommodate Velcro® strips, ensuring vertical and horizontal stability

##### Combo Bracket

- Allows Leviton products to be installed in most non-Leviton structured wiring enclosures



47612-6SB/47612-1SB



47612-UBK



47612-FSB/47612-HSB



47612-CBK

### UNIVERSAL SECURITY AND SHELF BRACKETS FOR LEVITON 14", 28" OR 42" STRUCTURED MEDIA CENTERS

Description	Cat. No.
6" Universal Bracket. Comes with a set of two 6" long, 1" wide brackets with self-tapping screws and spacers for mounting with Leviton's Series 14", 28" or 42" Structured Media Centers	47612-6SB
12" Universal Bracket. Comes with a set of two 12" long, 1" wide brackets with self-tapping screws and spacers for mounting with Leviton's Series 14", 28" or 42" Structured Media Centers	47612-1SB
Universal Shelf Bracket. Comes with four 8" long Velcro strips to strap down security batteries of various sizes as well as other products to be mounted within Leviton's Series 14", 28" or 42" Structured Media Centers	47612-UBK
Half-Width Universal Security Plate. Comes with a 6" long plate with four adhesive clips for mounting with Leviton's Series 14", 28" or 42" Structured Media Centers	47612-HSB
Full-Width Universal Security Plate. Comes with a 12" long plate with four adhesive clips for mounting with Leviton's Series 14", 28" or 42" Structured Media Centers	47612-FSB
Combo Bracket. Designed to accommodate Leviton products to be installed in most structured wiring enclosures on the market	47612-CBK

Velcro® is a registered trademark of Velcro Industries, BV.

### Voice/Data/TV Panels

Leviton Voice/Data/TV Panels allow telephone, data and video to be routed throughout the home from one simple Panel. It's a flexible solution available in many different configurations. Its up to the minute, cost-efficient solution modules and expansion boards can be added as requirements change.

### High Density/Low Profile Interconnect Panels

Leviton brings the engineering, standards compliance and reliability of our commercial and industrial offerings to your new home installations.

#### Specifications and Features

- High density, component-rated patching for both voice and Gigabit ethernet connections
- Built-in label holders to identify key connections
- A high-tech, aesthetic look for discerning customers



### HIGH DENSITY/LOW PROFILE INTERCONNECT PANELS

Description	Cat. No.	Consists Of
Cat 5e Twist & Mount Patch Panel	476TM-524	24 Cat 5e Connectors
Cat 5e Twist & Mount Patch Panel	476TM-512	12 Cat 5e Connectors
Cat 6 Twist & Mount Patch Panel	476TM-624	24 Cat 6 Connectors
Cat 6 Twist & Mount Patch Panel	476TM-612	12 Cat 6 Connectors
Cat 5e/6 Twist & Mount Patch Panel	476TM-652	6 Cat 5e and 6 Cat 6 Connectors
Cat 5e/6 Twist & Mount Patch Panel	476TM-654	12 Cat 5e and 12 Cat 6 Connectors
Telephone Input Distribution Panel (TIDP)	476TL-T12	1-4 telephone jacks

## Residential Grade

### Pre-configured Structured Cabling Panels – Compact Series

Compact Pre-configured Structured Cabling Panels are the simple solution for basic telephone and TV distribution. These Panels feature a space saving profile and provide simple bridged telephone connections to nine locations and 1GHz video to four or six locations, respectively. Compact Series Panels are ideal for multi-dwelling units and apartments or any place where space and budgets are of great concern.

#### PRE-CONFIGURED STRUCTURED CABLING PANELS – COMPACT SERIES



47603-1G4



47603-TSV



47603-DP6

Description	Cat. No.	Consists Of
Telephone and 4-way TV	47603-1G4	- One 1x9 Bridged Telephone Board - One 4-way 1 GHz TV Splitter
Telephone and 6-way TV	47603-1G6	- One 1x9 Bridged Telephone Board - One 6-way 1 GHz TV Splitter
Telephone and 8-way TV	47603-1G8	- One 1x9 Bridged Telephone Board - One 8-way 1 GHz TV Splitter
Telephone Security and 6-way TV	47603-TSV	- One Telephone Security Board - One 6-way 1 GHz TV Splitter
Telephone Data and 6-way TV	47603-DP6	- One 1x4 4-Line Bridged Telephone and 4-Port Cat 5e Combo board - One 6-way 1 GHz TV Splitter

Compact panel dimensions: 6.55"(166.4mm) H x 6.55"(166.4mm) W x 3.01"(76.5mm) D.  
For detailed features and dimensions, please consult individual specification sheets at [www.leviton.com](http://www.leviton.com).

#### STAND-ALONE MODULES WITH BRACKETS

Description	Cat. No.
1x9 Bridged Telephone Module	47689-00B
Cat 5e Voice and Data Module	47605-C5B
Cat 6 Voice and Data Module	47611-C6B
Telephone Security Module	47609-TSV
DSL Filter Module	47616-DSB

### Pre-configured Structured Cabling Panels

Leviton's Pre-configured Structured Cabling Panels combine some of Leviton's most popular voice, data and radio frequency modules to create an economical, one stop home media distribution point. Some modules are available in expansion styles to fill unused panel slots as shown below. Choose the pre-configured combination that best meets your needs and then enhance it with expansion boards or stand alone modules.

#### PRE-CONFIGURED STRUCTURED CABLING PANELS - FULL SIZE

Description	Cat. No.	Consists Of
1 Basic Telephone and Video Panel (BTV)	47606-BTV	- One 1x9 Bridged Telephone Board - One 6-way 2 GHz Video Splitter
Basic Home Networking Plus Panel (BNP)	47606-BNP	- One Telephone Patching Board - One Cat 5e Voice and Data Board - Six 4-line telephone connections - One 6-way 2 GHz Video Splitter
Advanced Home Telephone and Video Panel (AHT)	47606-AHT	- One Telephone Line Distribution Board - 19 multi-line telephone connections (in various combinations of two or four lines) - One Cat 5e Voice and Data Board - One 6-way 2 GHz Video Splitter
Advanced Home Office Panel (ASO)	47606-ASO	- One Telephone Line Distribution Board - 19 multi-line telephone connections (in various combinations of two or four lines) - Two Cat 5e Voice and Data Boards - One 6-way 2 GHz Video Splitter
12-Port Structured Media Panel (12P)	47603-12P	- One Telephone Line Distribution Board - 19 multi-line telephone connections (in various combinations of two or four lines) - Two Cat 5e Voice and Data Boards
18-Port Structured Media® Panel (18P)	47603-18P	- One Telephone Line Distribution Board - 19 multi-line telephone connections (in various combinations of two or four lines) - Three Cat 5e Voice and Data Boards
24-Port Structured Media Panel (24P)	47603-24P	- One Telephone Line Distribution Board - 19 multi-line telephone connections (in various combinations of two or four lines) - Four Cat 5e Voice and Data Boards
4x12 Telephone Distribution Module	47603-12M	- One 4x12 Telephone Distribution Board
4x12 Telephone Distribution Module with Splitter	47603-412	- One 4x12 Telephone Distribution Board - One 8-way 2 GHz Video Splitter
4x18 Telephone Distribution Module	47603-18M	- One 4x18 Telephone Distribution Board
4x18 Telephone Distribution Module with Cat 5e Board	47603-8C1	- One 4x18 Telephone Distribution Board - One Cat 5e Voice and Data Board



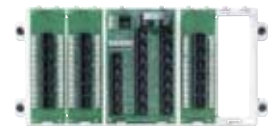
47606-BTV



47606-BNP



47606-ASO



47603-18P

Full-size panel dimensions: 6.13" (155.7mm) H x 13.30" (337.8mm) W x 2.28" (57.9mm) D.  
For detailed features and dimensions, please consult individual specification sheets at [www.leviton.com](http://www.leviton.com).  
NOTE: Pre-configured panels are assembled at the factory and will contain one or more of the following distribution boards.

## Residential Grade

### PANEL COMPONENTS AND EXPANSION BOARDS



47603-110



47609-F6

Description	Cat. No.	Application	Features
1x9 Bridged Telephone Board	47603-110	Telephone, Fax, Modem	<ul style="list-style-type: none"> <li>- Bridge up to four telephone lines to nine locations</li> <li>- Connect up to nine separate telephones per line</li> <li>- Printed circuit board</li> <li>- 4-pair 110-type IDC punchdowns</li> </ul>

1x6 Bridged Telephone Board	47609-0F6	Telephone, Fax, Modem	<ul style="list-style-type: none"> <li>- Bridge up to four telephone lines to six locations</li> <li>- Connect up to six separate telephones per line</li> <li>- Printed circuit board</li> <li>- IDC connectors for Cat 5 or 5e wire</li> <li>- RJ45 expansion port</li> </ul>
-----------------------------	-----------	-----------------------	---



47689-008



47609-D5P

1x9 Bridged Telephone Module	47689-00B		<ul style="list-style-type: none"> <li>- ABS Plastic Bracket</li> <li>- Bridge up to four telephone lines to nine locations</li> <li>- Connect up to nine telephones per line</li> </ul>
------------------------------	-----------	--	--

1x10 Bridged Telephone Board with Security	47609-S10	Telephone, Fax, Modem	<ul style="list-style-type: none"> <li>- Bridge up to six telephone lines to ten locations</li> <li>- Connect up to ten separate telephones per line</li> <li>- Printed circuit board</li> <li>- IDC connectors for Cat 5 or 5e wire</li> <li>- RJ45 expansion port</li> <li>- Punchdown security interface to accommodate alarm systems</li> </ul>
--	-----------	-----------------------	---



47609-S10

VDSL Board with 1x5 Bridged Phone with Data Pass through IDCs	47609-D5P	Data, Telephone, Modem	<ul style="list-style-type: none"> <li>- Bridge up to four telephone lines to five locations</li> <li>- Connect up to five separate telephones per line</li> <li>- IDC connectors for Cat 5 or 5e wire</li> <li>- Termination point and pass through for a data connection via IDCs up to 150MHz</li> </ul>
---	-----------	------------------------	---

Combo Phone and Data Board with 1x4 Bridged Phone and 4-Port Cat 5e	47609-4DP	Data, Telephone	<ul style="list-style-type: none"> <li>- Provides both data and phone connections on a single board</li> <li>- 1x4 phone portion provides four telephone lines up to four locations via IDC punchdowns</li> <li>- Four ports of Cat 5e 150MHz data connections via modular RJ45 jacks and 4-pair 110-type IDC punchdowns</li> </ul>
---	-----------	-----------------	---



47609-4DP



47609-004

1x4 Bridged Telephone Board	47609-004	Telephone, Fax, Modem	<ul style="list-style-type: none"> <li>- 1x4 phone board provides four lines up to four locations via IDC punchdowns</li> </ul>
-----------------------------	-----------	-----------------------	---

## Residential Grade

Description	Cat. No.	Application	Features
Cat 5e Voice & Data Board	47603-0C5	Data, Telephone, Fax, Modem	<ul style="list-style-type: none"> <li>- Patch phone or data connections to six locations</li> <li>- Combine with a TLDM, key system or network hubs for added applications</li> <li>- 4-pair 110-type IDC punchdowns</li> <li>- Six Cat 5e RJ45 ports</li> <li>- Printed circuit board</li> </ul>
CAT 5e Voice & Data Module	47605-C5B		
Cat 6 Voice & Data Board	47611-0C6	Data, Telephone, Fax, Modem	<ul style="list-style-type: none"> <li>- Meets TIA/EIA-568B channel rating to easily handle Gigabit data rates</li> <li>- Punchdown Cat 6 cable to this board</li> <li>- Combine with Gigabit Internet Gateway/Router or Gigabit Ethernet Switch for additional applications</li> <li>- 4-pair 110-type IDC punchdowns and six Cat 6 jacks</li> </ul>
CAT 6 Voice & Data Module	47611-C6B		
Telephone Patching Board/Expanded 4-line Telephone Distribution	47609-EMP	Telephone, Fax, Modem	<ul style="list-style-type: none"> <li>- Bridge up to four telephone lines to seven locations</li> <li>- Printed circuit board module</li> <li>- One incoming 4-pair 110-type IDC punchdown</li> <li>- Seven outgoing RJ45 jack connections</li> <li>- Combine with a Cat 5e board to rout telephone to remote locations</li> </ul>
Telephone Security Board/route simple telephone with security interface	47609-TSV	Telephone, Fax, Modem	<ul style="list-style-type: none"> <li>- Bridge up to four telephone lines to six locations</li> <li>- Connect up to six separate telephones per line</li> <li>- Connect to security system</li> <li>- Printed circuit board module</li> <li>- 4-pair 110-type IDC punchdowns</li> </ul>
DSL Filter Board	47616-DSF	Telephone, Modem	<ul style="list-style-type: none"> <li>- Filters DSL signal from phone line before distribution throughout a home or office</li> <li>- Eliminates need for individual filers at each wallplate</li> <li>- Use with any phone distribution module</li> <li>- Printed circuit board module with RJ45 jack and 110-type punchdowns</li> </ul>
DSL Filter Module	47616-DSB		
Telephone Line Distribution Board (TLDM)	47603-TDM	Telephone, Fax, Modem	<ul style="list-style-type: none"> <li>- 19 multi-line telephone connections in combinations of two or four lines; bridge "line 1" service to 12 locations and 4-line service to eight locations</li> <li>- Connect to Cat 5e Voice and Data Board(s) or additional panels for more connections and easier adds/moves/changes</li> <li>- Independent RJ45 jack and punchdown security interface to accommodate alarm systems</li> </ul>
4x12 Telephone Distribution Board	47603-12B	Telephone, Fax	- Bridge up to four telephone lines to twelve locations
4x18 Telephone Distribution Board	47603-18B	Telephone, Fax	- Bridge up to four telephone lines to eighteen locations



47603-0C5



47605-C5B



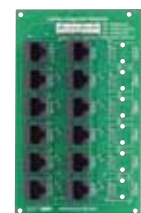
47611-C6B



47609-TSV



47616-DSB



47603-12B



47603-18B

## Residential Grade

### Power Supplies

Leviton takes special care in designing power modules and supplies for the Structured Media® Center. AC receptacle power modules come in both surge protected and non-surge protected versions. Power supplies are available in various output DC voltages and accommodate domestic and international AC inputs. Two supplies are housed in powder-coated steel enclosures that ingeniously drop into a cut out in the bottom of the Structured Media Center. This design allows you to install the power required without taking up valuable space inside the enclosure.

### Surge Protection and Standard AC Power Modules and J-Box Kits

Leviton offers reliable surge protection AC Power Modules and J-Box kits. Both the AC Power Module and the J-Box kits work with the 14", 28" and 42" Structured Media Centers. Choose either surge protection for optimum protection or non-surge protective. The surge protected options provide EMI/RFI filtering that meets UL 1449 standards. The AC Power Modules feature two 15-Amp duplex receptacles and the J-Box kit features one 15-Amp duplex receptacle.



47605-DP



48212-6S



47605-ACS

#### AC POWER MODULES FOR 28" AND 42" STRUCTURED MEDIA ENCLOSURES

Description	Cat. No.	Dimensions	Input
Surge AC Power Module, two duplex receptacles Standards Compliance: UL 1449	47605-ODP	3.08" (78.2mm) H x 9.87" (250.7mm) W x 2.94" (74.7mm) D	2 @ 15A 120 VAC
Non-Surge AC Power Module, two duplex receptacles	47605-NDP	3.08" (78.2mm) H x 9.87" (250.7mm) W x 2.94" (74.7mm) D	2 @ 15A 120 VAC
AC Surge Module, six duplex receptacles	48212-06S	3.08" (78.2mm) H x 9.87" (250.7mm) W x 2.94" (74.7mm) D	2 @ 15A 120 VAC

#### J-BOX KITS FOR 14", 28" AND 42" STRUCTURED MEDIA CENTERS

Description	Cat. No.	Dimensions	Input
Surge J-Box Kit, one duplex receptacle, wallplate Standards Compliance: UL 1449	47605-ACS	2.00" (50.8mm) H x 3.00" (76.2mm) W x 2.50" (63.5mm) D	1 @ 15A 120 VAC
Non-Surge J-Box Kit, one duplex receptacle, wallplate	47605-ACN	2.00" (50.8mm) H x 3.00" (76.2mm) W x 2.50" (63.5mm) D	1 @ 15A 120 VAC

### Universal DC Power Supplies

These compact units are designed specifically to fit into Leviton's 14", 28" and 42" Structured Media® Enclosures. They are compatible with any incoming AC voltage in the range of 90 to 264 VAC, 50 or 60 Hz. They have three, six, or nine 12VDC connectors providing from 10 to 40 watts of power. All modules provide short circuit overload and surge protection as well as EMI/RFI filtering to connected equipment.

#### Specifications and Features

- Surge protected units provide greater protection for line voltage modules, including multi-stage defense (L-N, L-G, N-G)
- Non-surge suppressor units provide a cost effective method of providing power to active components
- Safety clips protect outlets from dust, dirt and debris
- Saves valuable real estate by mounting on outside of Structured Media® Centers
- Meets UL 1449 standards



47605-PSC



47605-PSA



47605-PSB

### DC POWER SUPPLIES

Description	Cat. No.
Universal DC Power Supply, nine 12VDC connectors and one IEC AC receptacle	47605-PSA
Accessory for above: IEC to NEMA 15A Adapter power cord (12")	48212-IEC
Universal Mini DC Power Supply, three 12VDC connectors	47605-PSB
Versatile Power Supply, six 12 VDC connectors and two NEMA 15 Amp receptacles	47605-PSC



#### Related Products — Surge Protective Devices

Leviton offers Surge Protection Panels (Cat. No. S1110-001) and a wide range of Surge Protective Devices. For more information on Surge Protection Panels [see page 585](#).

## Residential Grade

### DC Bus

Leviton created the DC Bus in response to the additional requirements for high quality DC for components in the Structured Media® Center. This unique solution reduces clutter and opens up additional space in the Structured Media Enclosure by eliminating the need for more than two AC/DC power adapters. Powered by a single 12VDC adapter and a single 24VDC adapter, the DC Bus provides fully regulated, 12VDC and 24VDC power for several devices.

#### Specifications and Features

- Contains six 12VDC outputs
- Contains three 24VDC outputs, including one 1 F-connector for coaxial cable connection
- Comes with fully regulated 12V DC & 24V DC AC/DC power adapters
- Power indicating LEDs for both 12VDC and 24VDC inputs
- Comes with 2.1 mm mini power jacks and cords for 12VDC and 1.3 mm mini power jacks for 24VDC



48212-124

### DC BUS

Description	Cat. No.
DC Bus - 12VDC & 24VDC	48212-124
Dimensions	2.13" (54.2mm) H x 6.57" (166.8mm) W x 2.43" (61.7mm) D
Input	12VDC and 24VDC AC/DC power adapters (supplied)
Output	Provides 12VDC power at up to 1500 mA total with outlets for five devices. Provides 24VDC power at up to 1000 mA total with outlets for three devices, including one with F-connector/coaxial cable requirements
Output Power Cables	Included for all but 24 VDC F-connector coaxial connection

### Snap-in Modules for Structured Media Center Surge Module Bracket

Leviton's Snap-in Surge Protection Modules provide customized surge protection for all low voltage communication and data lines in the Structured Media Center. All Series 5950 Modules can snap-in to the Cat. No. 3950-BKT Surge Module Bracket. The bracket allows you to add and change modules to fit specific protection needs. Choose from a selection of protection modules for digital Satellite systems, Ethernet systems, cable TV, telephone/fax/modem and DSL/ADSL equipment.

#### Specifications and Features

- Interchangeable modules accommodate changing surge protection needs
- All modules easily snap into the 3950 Surge Module Bracket
- User friendly design - no wiring required
- Telephone/Fax/Modem Module acts as a splitter, allowing the connection of two devices



3950-BKT

### SNAP-IN SURGE PROTECTION BRACKET AND MODULES

Description	Cat. No.
Surge Module Adapter Bracket - For use with Leviton Structured Media Centers	3950-BKT
Satellite System/Cable TV Protection Module - Four standard F-connectors; 3A fuse for over-current; max. line voltage: 75VDC; breakdown voltage range: 70.4-110 volts/sec	Beige: 5951-OSA Grey: 5951-SAT Ice: 5951-SAC

## Residential Grade

### Description

### Cat. No.

Satellite System/Cable TV Protection Module - Four standard F-connectors; 3A fuse for over-current; max. line voltage: 75VDC; breakdown voltage range: 70.4-110 volts/sec

Beige: 5951-0SA  
Grey: 5951-SAT  
Ice: 5951-SAC

Ethernet Protection Module (10 Base-T Applications) - Two RJ45 connectors to protect two pairs of transmit/receive lines; 10A automatic resettable PTC fuses; max. operating voltage: 16.6VDC; breakdown voltage range: 2.62-19.2 volts/sec

Beige: 5952-0ET  
Grey: 5952-ETH

Cable TV System Protection Module - Two standard F-type connectors; 3A fuse for over-current; max. line voltage: 75VDC; breakdown voltage range: 70.4-110 volts/sec

Beige: 5953-0PC  
Grey: 5953-PCG  
Ice: 5953-PCC

Telephone/Fax/Modem Protection Module - Three RJ11, 4-wire/2-pair connectors; 3-position splitter allows for connection to a common line; 3A fuse for over current protection; max. operating voltage: 150 VRMS (including ring voltage); breakdown voltage range: 162-331 volts/sec

Beige: 5954-AT4  
Grey: 5954-PT4  
Ice: 5954-CT4

DSL/ADSL Subscriber Equipment Protection Module - Three RJ11, 4-wire/2-pair connectors; 3A fuse for over current protection; max. operating voltage: 150 VRMS (including ring voltage); breakdown voltage range: 162-331 volts/sec

Beige: 5955-0DT  
Grey: 5955-DTG



5951/5953/5954

## Data Networking

Leviton has routers to share Internet access, Ethernet switches offering additional ports for the in-home Local Area Network (LAN), and a complete collection of connectivity products for Category 5e and Category 6 high-speed networking to help homeowners get their work done. You'll find everything you need to meet today's increasingly complex home office requirements including support for Gigabit Ethernet.



## Residential Grade

## Data Networking

### Specifications and Features

#### 10/100 Router

- Connects up to four devices directly (up to 253 computers via a series of cascaded devices) to the Internet using a single shared high-speed DSL, cable modem or satellite connection
- Allows fast Internet access at up to 100 Mbps
- Includes four 10/100 Ethernet ports for in-home LAN connections
- Permits creation of a private high-speed home area network (HAN) or local area network (LAN) in small office/home office (SOHO) environments for all connected computers with its fast, integral 10/100 Mbps auto-sensing Ethernet ports
- High performance suitable for demanding home office and telecommuting applications, including sharing of high-speed and high-capacity devices such as storage devices and back up systems
- Network Address Translation (NAT) technology creates a firewall that securely cloaks the private network from outside access
- Pass-through IPSEC and ISAKMP protocols allow attached LAN users to implement secure Virtual Private Network (VPN) communication applications on their PCs
- Built in DHCP server allows for easy set up and allocation of IP addresses on the LAN
- Network protocols: TCP/IP, DHCP, DNS, NAT, TFTP, HTTP, PPPOE
- Auto detect uplink: use any port to cascade additional switches, hubs or routers
- Connections are made by running cable from desired wallplate locations to a Cat 5e Voice and Data Module. From there, a Cat 5 or 5e patch cord can be used to connect the Gateway to the Cat 5e Module

#### 10/100/1000 Gigabit Router

- Includes all the features of the 10/100 Base-T Internet Gateway/Router plus 10/100/1000 Base-T data rates, plus the additional features below
- Full 1 Gbps performance on all ports
- Includes IEEE 802.3p and Quality of Service functions needed for optimum VoIP, IPTV, and high speed multi-user gaming performance
- Includes LEDs to indicate Power, Link/Activity 10, 100 and 1000 Mbps and WAN
- Features high performance store-and-forward switching architecture with CRC and Runt Filtering

#### 10/100 Ethernet Switches

- Allows fast Ethernet access at up to 100Mbps
- Connects up to five devices (47611-5PT) or eight devices (47611-8PT) directly and allows expansion of LAN ports from the 10/100 Internet Gateway/Router
- Auto detect uplink: use any port to cascade additional switches, hubs or routers
- High performance suitable for demanding home office applications, including networking of high speed, high-capacity Ethernet devices such as storage devices and back up systems
- Connections are made by running cable from desired wallplate locations to a Cat 5e Voice and Data Module. From there, a Cat 5 or 5e patch cord can be used to connect the Switch to the Cat 5e Module

#### 10/100/1000 Gigabit Ethernet Switch

- Includes all features of the 10/100 Base-T Ethernet Switch except at 10/100/1000 Base-T data rates, plus the additional features below
- Full 1 Gbps on all ports
- Expansion LAN ports for Gigabit-enabled IPTV sets and set top boxes, gaming consoles, network drives, and other very high speed peripherals
- Includes LEDs to indicate Power, Link/Activity 10, 100 and 1000 Mbps
- Features high performance store-and-forward switching architecture with CRC and Runt Filtering



47611-5GB



47611-5PT



47611-8PT



47611-GT4

### 10/100 ETHERNET SWITCHES AND INTERNET GATEWAY ROUTER

Cat. No.	10/100 Switches		10/100 4-Port Internet Router
	5-Port	8-Port	
	<b>47611-5PT</b>	<b>47611-8PT</b>	<b>47611-GT4</b>
Data Transfer Rate	10/100/1000 Mbps		10/100/1000 Mbps
Connectors	5 (or 8) ports, 1 AC power adapter jack		4 LAN ports, 1 WAN port, 1 AC power adapter jack
Cabling Requirements	Standard Cat 5/5e UTP		Standard Cat 5/5e UTP
LED Indicators	One power indicator, 5 (or 8) link/activity and 5 (or 8) 100 Mbps		One power indicator, one diagnostic indicator, five link/activity, five FD $\times$ /Col and five 10/100 Mbps
Power Supply	12VDC, 1000 mA		12VDC, 1000 mA
Dimensions	3.54" (98.9mm) H x 6.50" (165.1mm) W x 2.52" (64.0mm) D		3.94" (101mm) H x 6.50" (165.1mm) W x 2.59" (65.8mm) D
Standards Compliance	IEEE 802.3 10 Base T Ethernet		IEEE 802.3u 100 Base-TX Fast Ethernet and FCC Class B

### 10/100/1000 GIGABIT ETHERNET SWITCH AND INTERNET GATEWAY ROUTER

Cat. No.	10/100/1000 5-Port Ethernet Switch	10/100/1000 Internet Gateway Router
		<b>47611-5GB</b>
Data Transfer Rate	10/100/1000 Mbps	
Connectors	5 ports, 1 AC power adapter jack	4 LAN ports, 1 WAN port, 1 AC power adapter jack
Cabling Requirements	Standard Cat 5e/6 UTP	
LED Indicators	One power indicator, one status indicator, four link/activity, 4/1000 Mbps, 1 WAN	One power indicator link/activity, five 10/100/1000 Mbps
Power Supply	12VDC, 1000 mA	
Dimensions	3.54" (89.8mm) H x 6.5" (165.1mm) W x 2.54" (64.3mm) D	3.54" (89.8mm) H x 6.5" (165.1mm) W x 2.54" (64.3mm) D
Standards Compliance	IEEE 802.3, 802.3u, 802.3ab, 802.3x, 802.3p and q for QoS FCC Part 15 Class B and RFC2131 compliant	IEEE 802.3, 802.3u, 802.3ab, 802.3x, 802.3p and q for Quality of Service (QoS), FCC Part 15 (Class B)

## Residential Grade

### Premium CATV Modules

Leviton's Premium CATV Modules distribute incoming RF signals (Cable TV, HDTV, Antenna or other modulated sources) to 1, 8 or 16 locations throughout the home or office on coaxial cable. The modules incorporate state-of-the-art bidirectional circuitry to support advanced interactive applications such as cable modem, cable box communications and standard inputs like incoming CATV and aerial antennas. Delivery of HDTV and high speed Internet services with streaming media and VoIP require improved transmission specifications. The Premium CATV module line is SCTE and DOCSIS compliant and digital cable ready to handle the latest 1 GHz cable operator technology.

#### Specifications and Features

##### 1x1, 1x8, 1x16 CATV Modules

- Meets DOCSIS and SCTE transmission requirements
- Pre-tested by major CATV MSOs
- Automatically adjust output level as all active ports to match incoming signal level (unity gain)
- Durable aluminum die cast housing with white powder coating
- RF-sealed aluminum backplate provides beyond -110 dB RFI shielding measured per SCTE-IPS TP 403A1 Rev 1 test procedures
- F-ports provide up to 16 psi weather sealing
- Robust machine-threaded, gold plated brass F-ports meet SCTE requirements
- 360 degree sizing inserts retain center conductor up to pull-out tension of 200 grams
- Termination caps included for unused ports
- Easily installed into any Leviton Structured Media® Center in a horizontal or vertical direction
- Mounting bracket tilts for easy cable attachment and management
- 12VDC power supply included

##### 3x1 CATV Module

- Digital CATV compatible
- Combines modulated signals from cameras, DVD player, etc., for home or office
- Provides bi-directional signal path to support cable modem or cable box communications
- Easily installs into Leviton's Structured Media enclosures either horizontally or vertically
- Robust machine-threaded, gold-plated brass ports meet SCTE requirements
- F-ports provide up to 15 psi weather sealing
- 360-degree sizing insert retains center conductor up to pullout tension of 200 grams on .032" diameter coax center conductors

### PREMIUM CATV MODULES

Description	Cat. No.
1x1 Premium CATV Module	47693-01P
1x8 Premium CATV Module	47693-08P
1x16 Premium CATV Module	47693-16P
3x1 Passive Combiner	47693-31P

### 1X1 PREMIUM CATV MODULE

Parameter	Bandwidth	Forward Path	Return Path
Band	—	52-1000 MHz	5-42 MHz
Gain (Loss)	—	15 dB	(-0.5 dB)
Flatness	—	±0.75 dB	±1.5 dB
Return Loss - Input	—	22.0 dB	21.0 dB
Return Loss - Output	—	22.0 dB	21.0 dB
Port Isolation - Output	—	25.0 dB	27.0 dB
Group Delay (span 3.58 MHz)	54-60 MHz	15 ns	—
	61-1000 MHz	7 ns	—
Group Delay (span 1 MHz)	5-42 MHz	—	17 ns
	10-40 MHz	—	7 ns
Power to RF Input Isolation	5-1000 MHz	100 dB (min)	—
RFI Isolation	5-1000 MHz	-110 dBc	—
Noise Figure	52-1000 MHz	2.5 dB	—
Distortions	CSO	-65 dBc	—
	CTB	-74 dBc	—
	Xmod	-75 dBc	—



47693-01P

1 Input level at +10 dBmV flat 77 channels & 200 MHz noise for QAM test from 550 to 790 MHz.  
Operating Temperature: -40°C to +60 °C.

### 1X8 PREMIUM CATV MODULE

Parameter	Bandwidth	Forward Path	Return Path
Band	—	52-1000 MHz	5-42 MHz
Gain (Loss)	—	4 dB	(-11.0 dB)
Flatness	—	±1.0 dB	±1.5 dB
Return Loss - Input	—	22.0 dB	21.0 dB
Return Loss - Output	—	20.0 dB	21.0 dB
Port Isolation - Output	—	25.0 dB	25.0 dB
Group Delay (span 3.58 MHz)	54-60 MHz	15 ns	—
	61-1000 MHz	7 ns	—
Group Delay (span 1 MHz)	5-42 MHz	—	17 ns
	10-40 MHz	—	7 ns
Power to RF Input Isolation	5-1000 MHz	100 dB (min)	—
RFI Isolation	5-1000 MHz	-110 dBc	—
Noise Figure	52-1000 MHz	3.0 dB	—
Distortions	CSO	-65 dBc	—
	CTB	-74 dBc	—
	Xmod	-75 dBc	—



47693-08P

2 Input level at +10 dBmV flat 77 channels & 200 MHz noise for QAM test from 550 to 790 MHz.  
Operating Temperature: -40°C to +60°C.

## Residential Grade

### 1X16 PREMIUM CATV MODULE



47693-16P

Parameter	Bandwidth	Forward Path	Return Path
Band	—	52-1000 MHz	5-42 MHz
Gain (Loss)	—	0 dB	(-14.5 dB)
CM port	—	—	(-6.5 dB)
Flatness	—	±1.5 dB	±2.0 dB
Return Loss - Input	—	22.0 dB	21.0 dB
Return Loss - CM Input	—	20.0 dB	—
Return Loss - Output	—	20.0 dB	21.0 dB
Port Isolation - Output	—	20.0 dB	25.0 dB
Port Isolation - CM port to Output port	—	20.0 dB	—
Group Delay	54-60 MHz	15 ns	—
(span 3.58 MHz)	61-1000 MHz	7 ns	—
Group Delay	5-42 MHz	—	17 ns
(span 1 MHz)	10-40 MHz	—	7 ns
Power to RF Input Isolation	5-1000 MHz	100 dB (min)	—
RFI Isolation	5-1000 MHz	-110 dBc	—
Noise Figure	52-1000 MHz	3.0 dB	—
Distortions	CSO	-65 dBc	—
	CTB	-74 dBc	—
	Xmod	-75 dBc	—

3 Input level at +10 dBmV flat 77 channels & 200 MHz noise for QAM test from 550 to 790 MHz.  
Operating Temperature: -40°C to +60°C.

### 3X1 PREMIUM CATV MODULE



47693-31P

Bandwidth	Insertions Loss	Input to Input	Output	Input Return Loss (Min)
5-15 MHz	5.3 dB	27 dB	24 dB	25 dB
16-40 MHz	5.3 dB	38 dB	32 dB	28 dB
41-550 MHz	5.6 dB	25 dB	22 dB	24 dB
551-1000 MHz	6.1 dB	24 dB	22 dB	23 dB

### DIMENSIONS

3.5" (88.9mm) H x 3.5" (88.9mm) W x 3.33" (83.82mm) D

Impedance 75 Ohm

Connector Type Gold-plated F-type

Frequency 52-1000 MHz forward path;  
0-45 MHz reverse path

## Passive Components

Use 4-, 6- and 8-way Passive TV Splitters to split digital cable, quality cable TV and off-air antenna signals to four, six or eight televisions throughout the home. Leviton Passive Components feature die-cast housing and printed circuit board construction. Use with the Video Amplifier for increased signal strength.

### Specifications and Features

- Splits TV signals. Outputs for up to four, six or eight televisions
- Provides digital cable, cable TV and other TV services, via coaxial cable, to any room in the house
- Die-cast housing and printed circuit board
- Use with the TV Amplifier for increased signal strength
- Units for 14", 28" and 42" Structured Media® Centers come with mounting bracket
- Gold flashed contacts on 2 GHz units provide lowest conductive resistance

### 1X4, 1X6, 1X8 PASSIVE VIDEO SPLITTERS

Description	Cat. No.	Range	Dimensions
1x4 Passive TV Splitter Module for SMC 140, 280, 420 (1 GHz)	47690-04C	1 GHz	1.40" (35.6mm) H x 6.58" (166.1mm) W x 2.14" (54.4mm) D
1x4 Passive TV Splitter for Compact Structured Media® Enclosure (1 GHz)	47690-004	1 GHz	1.14" (29.0mm) H x 3.36" (85.3mm) W x 1.66" (42.1mm) D
1x4 Passive TV Splitter Module for SMC 140, 280, 420 (2 GHz)	47690-4C2	2 GHz	1.40" (35.6mm) H x 6.58" (166.1mm) W x 2.14" (54.4mm) D
1x4 Passive TV Splitter for Compact Structured Media Enclosure (2 GHz)	47690-0G4	2 GHz	1.14" (29.0mm) H x 3.36" (85.3mm) W x 1.66" (42.1mm) D
1x6 Passive TV Splitter Module for SMC 140, 280, 420 (1 GHz)	47690-06C	1 GHz	1.40" (35.6mm) H x 6.58" (167.1mm) W x 3.00" (76.2mm) D
1x6 Passive TV Splitter Module for Compact Structured Media Enclosure (1 GHz)	47690-0G6	1 GHz	1.14" (29.0mm) H x 3.36" (85.3mm) W x 2.65" (67.3mm) D
1x6 Passive TV Splitter Module for SMC 140, 280, 420 (2 GHz)	47690-6C2	2 GHz	1.40" (35.6mm) H x 6.58" (167.1mm) W x 3.00" (76.2mm) D
1x6 Passive TV Splitter for Compact Structured Media Enclosure (2 GHz)	47690-0G6	2 GHz	1.14" (29.0mm) H x 3.36" (85.3mm) W x 2.65" (67.3mm) D
1x8 Passive TV Splitter for Compact Structured Media Enclosure (1 GHz)	47690-008	1 GHz	1.14" (29.0mm) H x 3.36" (85.3mm) W x 2.65" (67.3mm) D
1x8 Passive TV Splitter Module for SMC 140, 280, 420 (1 GHz)	47690-08C	1 GHz	1.40" (35.6mm) H x 6.58" (167.1mm) W x 3.00" (76.2mm) D
1x8 Passive TV Splitter Module for SMC 140, 280, 420 (2 GHz)	47690-8C2	2 GHz	1.40" (35.6mm) H x 6.58" (167.1mm) W x 3.00" (76.2mm) D
1x8 Passive TV Splitter for Compact Structured Media Enclosure (2 GHz)	47690-0G8	2 GHz	1.14" (29.0mm) H x 3.36" (85.3mm) W x 2.65" (67.3mm) D



47690-4/47690-6/47690-8

## Residential Grade

### Video Amplifier

Run antenna TV signal through Leviton's 1-way Video Amplifier Module and boost strength up to 25 dB. This Module features a variable attenuator for signal amplification level setting and an FM trap to eliminate unwanted FM interference. This Module is not intended for use with cable TV applications, such as cable modems, cable set top boxes or TVs with built-in cable access cards.

#### Specifications and Features

- Boosts strength of off-air antenna signal for video distribution
- Boosts signal strength by up to 25 dB



48210-VA

#### VIDEO AMPLIFIER MODULE

Cat. No.	48210-0VA
Dimensions	6.58" H x 3.67" W x 4.4" D
Frequency Range	50-1000 MHz
Gain Control Range	10-25 dB
FM Trap	25 dB
Impedance	75 Ohm
Connector Type	F-type
Power Source	12 VDC 500 mA

NOTE: Not for use in-line between one satellite dish (LNB) and DBS satellite TV receiver.

### Satellite Distribution Components

3x4 Multi-Switch - The Passive Module combines signals from dual incoming LNB digital satellite systems with off-air antenna signals on a single coaxial cable, enabling distribution to up to four TVs. The Module incorporates a separate input for TV antenna signals and is best used in combination with a Video Amplifier.

#### Specifications and Features

- Distributes digital satellite signals to up to four TVs (47691-3MS)
- Combines signals from digital satellite with off-air antenna onto single coaxial cable
- DSS 75 Ohm and 2.0 GHz Combiner/Diplexer with DC Blocking (40856-DSS) is available to separate antenna and cable signals



47691-3MS

#### MULTI-SWITCH MODULE

Cat. No.	47691-3MS
Dimensions	4.77" H x 6.58" W x 2.37" D
Frequency	Terrestrial: 40-860 MHz Satellite: 950-2150 MHz
Receiver Output	40-2150 MHz
Connectors	F-type, 75 Ohms
LNP Input Selection	LNBA: 13/14 VDC LNBB: 17/18 VDC
Insertion Loss (Typical)	Terrestrial: -7 dB Satellite: -3 dB
Return Loss (Typical)	Terrestrial: -10 dB Satellite: -10 dB
Isolation (Typical)	Output to Opposite Input -22 dB
DC Power Passing	500 mA (max.)
DC Power	—

## Camera Systems

The Leviton Indoor/Outdoor Color Camera Monitoring System brings homeowners a high level of family security and safety that simply can't be matched by non-video sensors. Color video output runs through a Leviton Structured Media® Center and connects to any TV or video monitor in the home. Parents can keep a close watch on children and can see who is ringing the doorbell after dark. Cameras install quickly and easily with a single Cat 5, Cat 5e or Cat 6 cable run and two screws mounted to a mud ring (Indoor Camera) or outdoor box (Outdoor Camera).



## Residential Grade

### Leviton Camera Monitoring System

For sophisticated monitoring, Leviton offers high resolution, color video cameras. These easy to install cameras only require one Category 5e cable for video and power connections. The cameras mount with just two screws on a low voltage ring for an Indoor Camera or outdoor electrical box for an Outdoor Camera. A Camera Hub in the Structured Media® Center powers the cameras and separates out the video signals to other video equipment at the SMC. The Hub installs in a single Leviton bracket space in the SMC. Standard 110 IDC terminations and 8P8C jacks make the UTP cable connections quick, simple and reliable. The Indoor Camera fits in a Decora style wallplate and comes with clear and tinted lens covers. The Outdoor Camera provides video even in the dark using built in automatic IR illumination.



VSIND-0SC



VSOUT-00W

### HIGH RESOLUTION INDOOR/OUTDOOR CAMERAS

	Indoor Camera	Outdoor Camera
Cat. No.	VSIND-0SC	VSOUT-00W
Standard	NTSC	NTSC
Image Sensor	1/3" Color Sony CCD	1/3" Color Sony CCD
Pixel Count	510 x 492	510 x 492
H. Sync. Frequency	15.734 KHz	15.734 KHz
V. Sync. Frequency	59.94 Hz	55.94 Hz
Synchronization System	Internal	Internal
Horizontal Resolution	420 Lines	420 Lines
Electronic Shutter	Auto: 1/60 - 1/100,000 sec	Auto: 1/60 - 1/100,000 sec
Gain Control	Automatic	Automatic
Gamma Correction	0.45	0.45
S/N Ratio	More than 48 dB (AGC off)	More than 48 dB (AGC off)
Video Output	1.0 V pp75 Ohms (composite Video)	1.0 V pp75 Ohms (composite Video)
Minimum Illumination	0.05 Lux	0 Lux
Lens	3.6 mm	4.3 mm
Operating Temperature Range	-10° C to +45° C (14° F to +113° F)	-10° C to +45° C (14° F to +113° F)
Storage Temperature Range	-30° C to +60° C (-22° F to +140° F)	-30° C to +60° C (-22° F to +140° F)
Power Requirement	15VDC (+/- 10%)	15VDC (+/- 10%)
Power Consumption	100 mA (+/- 10%)	220 mA (+/- 10%)
Dimensions	3.1" (78.6mm) H x 1.71" (43.4mm) W x 2.33" (59.2mm) D	6.57" (166.6mm) H x 2.75" (69.8mm) W x 3.02" (76.7mm) D
Weight	2.93 oz. (83 g)	15.3 oz. (434 g)

### CAMERA HUB

	Camera Hub	Camera Hub with IDC
<b>Cat. No.</b>	<b>VSHUB-000</b>	<b>VSHUB-IDC</b>
Camera Inputs	RJ45 Jack, 4 each	4-Pair 110-type IDC punchdowns
Camera Outputs	Composite Video, 4 each	Composite Video, 4 each
Operating Temperature Range	0° C to + 60° C (32° F to +60° F)	0° C to + 60° C (32° F to +60° F)
Storage Temperature Range	-10° C to +60° C (14° F to 140° F)	-10° C to +60° C (14° F to 140° F)
Humidity	Non-condensing 5% to 95%	Non-condensing 5% to 95%
Input Power Connection	Center positive 2.1 mm jack	Center positive 2.1 mm jack
Input Voltage	12VDC (+/- 10%)	12VDC (+/- 10%)
Input Current	1.5A (max)	1.5A (max)
Output Voltage to Cameras	15VDC (+/- 10%)	15VDC (+/- 10%)
Output Current (max)	1.2A supports 4 outdoor cameras operating at night (0 Lux)	1.2A supports 4 outdoor cameras operating at night (0 Lux)
Plug-in Power Supply		
Input Voltage	120VAC (+/- 15%)	120VAC (+/- 15%)
Output Voltage	12VDC (+/- 5%)	12VDC (+/- 5%)
Output Current	1500 mA (min)	1500 mA (min)
Power Consumption (max)	18 Watts (max)	18 Watts (max)
Dimensions	5.75" (146.1mm) H x 1.75" (44.4mm) W x 0.86" (21.8mm) D	5.75" (146.1mm) H x 1.75" (44.4mm) W x 0.86" (21.8mm) D
Weight	3.25 oz (92 g)	3.25 oz (92 g)



VSHUB-000



VSHUB-IDC

## Residential Grade

### Media Center Modulator

Leviton's Media Center Modulator gives your whole house security on one channel when CATV channel spacing will allow it. The Modulator takes the signal from a security camera or, if you are using the Video Sequencer, multiple cameras, and modulates the signal to one unused cable TV channel. This signal is then combined with the CATV signal, which can be sent to TV sets anywhere in the home. Select the broadcast channel to be programmed via dip-switch button programming. The Modulator provides 0, 10, 20 or 30 dBmV RF output.

NOTE: Modulator broadcasts mono audio only. In a Structured Media® System, the Modulator must be used with a Leviton Notch Filter (PN 47690-NFA) to clear the target cable channel and avoid interference when used with Structured Media Video Distribution Modules.



48213-VMA

#### MEDIA CENTER MODULATOR

Cat. No.	48213-VMA
Dimensions:	3.34" (84.8mm) H x 3.59" (91.2mm) W x 0.98" (24.9mm) D
Inputs	RCA video, RCA audio inputs
Outputs	1 F-connector for RF signal
Operational Channels	14-69 UHF; 70-94, 100-125 CATV, settable via dip switches
Bandwidth	50 MHz-860 MHz
Power	12VDC 400 mA

### Video Sequencer

Leviton engineered the Video Sequencer for reliable, long lasting performance. The Sequencer automatically switches between up to four cameras with composite video signals. With a variable time interval setting that ranges from 1-30 seconds, you can sequentially monitor each camera for thorough surveillance of your home's perimeter or interior. The Video Sequencer has four composite RCA audio/video inputs and two sets of RCA outputs to connect with a monitor or modulator. It snaps into a 28" or 42" Structured Media Center.



48213-CVS

#### VIDEO SEQUENCER

Cat. No.	48213-CVS
Dimensions	6.60" (167.7mm) H x 7.80" (198.1mm) W x 2.01" (51.1mm) D
Inputs	Four RCA video, eight RCA left/right audio
Outputs	Two RCA video, four RCA left/right audio
Time Interval	1-30 seconds, variable/adjustable
Signal to Noise Ratio	<1.2 dB
Bandwidth	5 MHz
Power	12VDC, 300 mA

### RF Notch Filter

The RF Notch Filter is an essential element of Home Security Monitoring when using the Indoor/Outdoor B&W Camera or the Media Center Modulator. It blocks incoming cable TV channels 75-80, allowing the Media Center Modulator or Component Modulator to broadcast without interference an in house security or entertainment channel over the coaxial cable system. The Notch Filter simply couples to the coaxial cable TV input on either a splitter or an active video distribution device. Once installed, it filters out six cable channels to make room for home security or entertainment video. It also blocks outgoing signals, such as cameras, from being broadcast outside the home.



47690-NFA

#### RF NOTCH FILTER

Cat. No.	47690-NFA
Dimensions	3.59" (91.2mm) L x 0.81" (20.6mm) W
Type	Passive RF filter
Bandwidth	CATV channels 75-80
Input	Female F-connector
Output	Male F-connector

## Video and Audio Intercom Systems

Leviton brings the home intercom into the 21st Century with an innovative system. The Ophera Video Entry System offers an excellent access solution for MDU and custom residential projects.



The Ophera Video Entry System integrates high-quality color video and audio components in a stylish combination intended to complement any décor.

### Specifications and Features

#### Ophera Video Entry System

- Door release capable with re-lock delay
- Up to four entry stations and 100 apartments/suites per system
- 2,133 ft. maximum cable length per system
- Analog system uses CAT 5e and 18-2 twisted AWG cabling
- Choose single button or digital keypad entry panels

#### Ophera Hands-Free Receiver

- 3.5" color monitor on receiver
- Adjustable display tilts 20-degrees
- Mute, privacy and control buttons
- Call waiting notification
- Receiver includes three color inserts: white, arctic blue, orange
- Audio intercom function for up to eight receivers per apartment or suite

#### Entry Station

- Weather resistant video entry stations
- Integrated low-light color video camera with adjustable angle view
- LED backlit buttons
- LCD display on keypad model

## Residential Grade



BR200-00W



BT102-01G



BT200-DPG

### OPHERA VIDEO ENTRY SYSTEM

Description	Cat. No.
Ophera Hands-Free Color Receiver (three inserts: white, arctic blue, orange)	BR200-00W
1-Button Color Video Entry Panel, X1 system, grey	BT102-01G
Digital Entry Panel with name directory, grey	BT200-DPG
Mounting Box for Ophera	BR300-BOX
Surface mount wall support for Ophera, white	BR300-SMK
Single Push Button Kit	BT600-HPS
Interface module for digital entry panel	BT500-HAC
Plastic embedding box	BT700-HTI
Plastic embedding box with frame, grey	BT700-HTG
Metal Surface Box w/Rain Cover	BT700-HBT
Control unit and power supply, 120-127V, 60Hz, (12 DIN)	BC100-0VA
Power Supply, 120-127V, 60Hz, 17.5VDC, 1.7A (8 DIN)	BC100-VAS
Video distribution module, 4 output	BC200-4VD
Amplified video distribution module, 4 output	BC200-AVD
Intercom selector, system X1/300	BC300-VSE
Line repeater, 120-127V, 60Hz (12-DIN)	BC100-XAS
Video Amplifier	BC200-AMP

## Audio Intercom System for Structured Media® Applications

### Specifications and Features

- Integrates with phone system
- Operates over standard Cat 5 wiring
- Main controller board installs easily into Leviton Structured Media Centers
- System integrates with other services in Structured Media Centers (phones, door strike, lighting controls, doorbell, dry contact security devices, and Indoor and Outdoor Stations)
- Onboard firmware for music-on-hold
- Answering machine function for message and message taking for intercom activations
- Allows call on-hold for hang-up at one location and pick-up at another
- Allows whole-house paging, including phone-to-phone paging
- Allows station queuing so multiple, simultaneous activations can be responded to automatically in sequence
- Integrated dry contacts provide security alert by motion, pressure and gate sensors, etc.
- Provides for remote monitoring of zones for added security
- Full duplex communication

### AUDIO INTERCOM SYSTEM FOR STRUCTURED MEDIA® APPLICATIONS

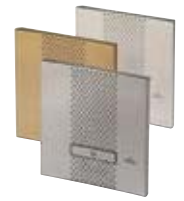


47000-MKB

Description	Cat. No.
Intercom Kit (includes Main Controller Board and one interface board on a bracket with one outdoor station with warm silver faceplate)	47000-MKB
Outdoor Station (Brushed nickel finish)	47000-0D1
Indoor Station (White)	47000-0W1
Indoor Station (Black)	47000-0E1
Door Strike Module	47000-STR

## Residential Grade

Description	Cat. No.
Interface Board with four additional ports	47000-PRT
Door Chime Module	47000-CHM
Satin Cover and Button Color Change Kit - Warm Silver	47000-CWS
Satin Cover and Button Color Change Kit - Soft Gold	47000-CSG
Satin Cover and Button Color Change Kit - Sterling Blush	47000-CSB



47000-CWS/CSG/CSB

### Specifications

Controller Power Input (Power supply included)	24VDC
Current Consumption	250 mA
Power Indicator	Green LED
Ringer Equivalency Number (REN)	4.6
Cabling	Cat 5 UTP 4-pair solid conductor 24 AWG 100 ohm, 100 MHz
Wiring Standard	T568A via solid conductor 8P8C modular plug and 110-style IDC



47000-STR/PRT/CHM

## QuickPlate™ Wallplates And Connectors

An all-in-one connectivity solution, Leviton QuickPlate Wallplates distribute data, phone and TV connections through a preassembled one-piece design offered in standard and midway sizes and in four colors: ivory, white, almond and light almond. Rear facing IDC punchdowns and consistent positioning of jack and F-connectors reduce ordering problems, eliminate onsite assembly, improve the overall décor, and provide the quickest installation available.

### Specifications and Features

- All QuickPlates have a pleasing matte finish
- Robust one-piece wallplate and lead-frame jack design
- Rear facing 110 IDC punchdown for voice and data jacks make termination quick and easy
- Data port accepts Cat 5e with T568A wiring
- Phone port accepts UTP with USOC wiring
- F-connector for video applications is an F-81 style bulkhead connector
- Includes captive screws painted to match wallplate color
- Limited Two-Year Warranty

## QUICKPLATE™ WALLPLATES AND CONNECTORS

Description	Cat. No.	Cat. No.	*Color
	Standard Size	Midway Size	
1 Data	5EA20-S1*	5EA20-M1*	W, I, A, T
1 Data, 1-F	5EA20-S2*	5EA20-M2*	W, I, A, T
1 Data, 1 Phone, 1-F	5EA20-S3*	5EA20-M3*	W, I, A, T
2 Data, 2-F	5EA20-S4*	5EA20-M4*	W, I, A, T
Dimensions	4.61" (117.1mm) H x	4.99" (126.7mm) H x	
	2.75" (69.9mm) W x	3.13" (79.4mm) W x	
	0.26" (6.5mm) D	0.26" (6.5mm) D	



5EA20-S1W

### TESTING AND CODE COMPLIANCE

- Meets all applicable standards
- Category 5e Connectors meets or exceeds applicable standards and is labeled for T568A wiring
- Complies with applicable FCC Part 68 requirements
- Supports high megabit and shared-sheath applications
- F-type bulkhead connectors meets or exceeds 10db of return loss at 1 GHz

### MATERIAL CHARACTERISTICS

Wallplate: ABS plastic

### \*COLOR

Basic Cat. No. shown above denote standard and midway size QuickPlates. To specify colors, add suffix to basic Cat. No. White (-W), Ivory (-I), Almond (-A), Light Almond (T)

## Residential Grade

### QuickPort® Flush Mount Wallplates

Offering field configurability in an attractive single piece housing, flush mount wallplates include color matched mounting screws.



41080-6WP



41080-3WP

#### QUICKPORT FLUSH MOUNT WALLPLATES

Description	Cat. No. White	Cat. No. Ivory	Cat. No. Lt. Almond
6-Port Flush Mount Individual polybag pack, standard carton	41080-6WP	41080-6IP	41080-6TP
4-Port Flush Mount Individual polybag pack, standard carton	41080-4WP	41080-4IP	41080-4TP
3-Port Flush Mount Individual polybag pack, standard carton	41080-3WP	41080-3IP	41080-3TP
2-Port Flush Mount, individual polybag pack, standard carton	41080-2WP	41080-2IP	41080-2TP
1-Port Flush Mount, individual polybag pack, standard carton	41080-1WP	41080-1IP	41080-1TP

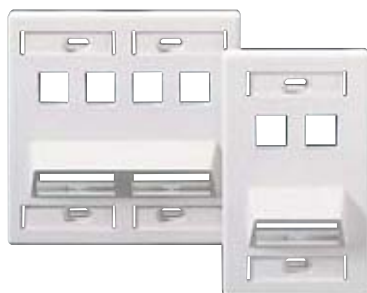
Also available: Midway size plates and high impact nylon. Call Leviton Customer Service at 1-800-722-2082.

### QuickPort Angled Wallplates

Available in single-gang 4-port and dual-gang 8-port versions, these wallplates have ports angled to relieve stress on equipment cords. The bottom opening can be used as a duplex port by inserting the supplied divider and installing two QuickPort Snap-In modules. Mounting screws are included.

#### QUICKPORT ANGLED WALLPLATES

Description	Cat. No. White	Cat. No. Ivory	Cat. No. Almond	Cat. No. Lt. Almond
4-Port Wallplate	41081-4WP	41081-4IP	—	41081-4TP
2-Port Wallplate	41081-2WP	41081-2IP	—	41081-2TP
4-Port Wallplate w/ID window	42081-4WS	42081-4IS	—	42081-4TS
2-Port Wallplate w/ID window	42081-2WS	42081-2IS	—	42081-2TS
4-Port w/two angled ports, individual polybag pack, standard carton	40807-0BW	40807-0BI	—	—
4-Port w/two angled ports, w/ID window, carded pack, standard carton	40807-00W	40807-00I	40807-00A	—
Angled 8-Port w/four angled ports, individual polybag pack, standard carton w/ID window	40807-B2W	40807-B2I	—	—



40807-0BW/40807-B2W



41081-2WP



42081-4WS

## QuickPort® Multimedia Wallplate Inserts

You can have it all — voice, data, audio and video — through a single wallplate when you combine Decora® multimedia inserts with QuickPort Snap-In modules and Decora wallplates. Mix and match the snap-in modules in combinations of two, three, four or six. Decora inserts are compatible with the full line of standard Decora wallplates, Decora Plus™ snap-on wallplates with hidden mounting screws and Leviton sectional wallplates (all sold separately). The inserts fit standard NEMA wallboxes.

### QUICKPORT MULTIMEDIA WALLPLATE INSERTS

Description	Cat. No.	Cat. No.	Cat. No.	Cat. No.
	White	Lt. Almond	Almond	Ivory
1-Port Insert, polybag standard carton	41641-00W	41641-00T	41641-00A	41641-00I
2-Port Insert, polybag standard carton	41642-00W	41642-00T	41642-00A	41642-00I
3-Port Insert, polybag standard carton	41643-00W	41643-00T	41643-00A	41643-00I
4-Port Insert, polybag standard carton	41644-00W	41644-00T	41644-00A	41644-00I
6-Port Insert, polybag standard carton	41646-00W	41646-00T	41646-00A	41646-00I
HDMI Decora insert, feedthrough	41647-00W	—	—	41647-00I
DVI feedthrough, Decora style	41648-00W	—	—	41648-00I

Decora® is a registered trademark of Leviton Manufacturing Co., Inc.



41643-00W



41647-00W



41641-00W



#### Related Products — Decora Wallplates

Decora inserts are compatible with the full line of Decora standard wallplates. See page 711 for more information.

## QuickPort Shutters

These field-installable shutters protect connectors with a one-piece hinged door that keeps out dust and contaminants. They work in any QuickPort housing and fit USOC 8-position, Category 3, Category 5, Category 5e and Category 6 connectors.

### QUICKPORT SHUTTERS AND ACCESSORIES

Description	Cat. No.
QuickPort Shutter Kit w/Leviton logo and miscellaneous icons	51084-ICN
Accessory Kit w/pre-printed icons on white paper	51084-XLB
Color Label Kit w/pre-printed icons on colored paper (Color Label Kit includes: Brown, Green, Orange, Red, Blue, Grey, Purple)	51084-CLB



51084-ICN



#### Related Products — Network Infrastructure Solutions

Leviton also offers a wide range of Network Infrastructure Solutions for your projects. See page 311 for more information.

## Residential Grade

### HOME 5e™ and HOME 6™

Leviton extends our popular QuickPort® products with affordable new residential connectors and patch cables. The Home 5e and Home 6 products represent innovation as a major effort to deliver to low-voltage residential installers high quality residential network products designed specifically for applications inside the home.

#### Specifications and Features

##### HOME 5e QuickPort / 5e Tool Free Quickport Connectors

- CAT 5e
- Tool-free design eliminates the need for punch down tools
- T568A wiring
- Category 5e performance supports high-speed data applications

##### HOME 6 QuickPort / 6 Tool Free Quickport Connectors

- CAT 6
- Tool-free design eliminates the need for punch down tools
- T568A wiring
- Category 6 performance supports high-speed data applications

##### HOME 5e Ultra High-Flex Patch Cables

- CAT 5e
- Tight bend radius allows for faster and cleaner installation
- Available in 6 inch, 1 ft., 2 ft., 3 ft. and 4 ft. lengths
- Power over Ethernet (PoE) compatible
- Accommodates use in high density switches, routers and other electronics
- Category 5e performance supports high-speed data applications

##### HOME 6 Ultra High-Flex Patch Cables

- CAT 6
- Tight bend radius allows for faster and cleaner installation
- Available in 6 inch, 1 ft., 2 ft., 3 ft. and 4 ft. lengths
- Power over Ethernet (PoE) compatible
- Accommodates use in high density switches, routers and other electronics
- Category 6 performance supports high-speed data applications

##### HOME 5e Patch Cables

- CAT 5e
- Available in 6 inch, 1 ft., 2 ft., 3 ft. and 4 ft. lengths
- Power over Ethernet (PoE) compatible
- Accommodates use in high density switches, routers and other electronics
- Category 5e performance supports high-speed data applications

##### HOME 6 Patch Cables

- CAT 6
- Available in 6 inch, 1 ft., 2 ft., 3 ft. and 4 ft. lengths
- Power over Ethernet (PoE) compatible
- Accommodates use in high density switches, routers and other electronics
- Category 6 performance supports high-speed data applications

## Residential Grade

### HOME 5e™ QUICKPORT® CONNECTORS

Cat. No.	Color
5EHOM-RW5	White
5EHOM-RI5	Ivory
5EHOM-RT5	Light Almond
5EHOM-RG5	Grey
5EHOM-RE5	Black
5EHOM-RB5	Brown
5EHOM-RL5	Blue



5EHOM-RW5

### HOME 5e TOOL-FREE QUICKPORT CONNECTORS

Cat. No.	Color
5ETLS-RW5	White
5ETLS-RI5	Ivory
5ETLS-RT5	Light Almond
5ETLS-RG5	Grey
5ETLS-RE5	Black
5ETLS-RB5	Brown
5ETLS-RL5	Blue



5ETLS-RW5

### HOME 6™ QUICKPORT CONNECTORS

Cat. No.	Color
61HOM-RW6	White
61HOM-RI6	Ivory
61HOM-RT6	Light Almond
61HOM-RG6	Grey
61HOM-RE6	Black
61HOM-RB6	Brown
61HOM-RL6	Blue



61HOM-RW6  
Front and Back

### HOME 6 TOOL-FREE QUICKPORT CONNECTORS

Cat. No.	Color
61TLS-RW6	White
61TLS-RI6	Ivory
61TLS-RT6	Light Almond
61TLS-RG6	Grey
61TLS-RE6	Black
61TLS-RB6	Brown
61TLS-RL6	Blue



61TLS-RW6  
Front and Back

## Residential Grade



5LHOM-01L

### HOME 5e™ PATCH CABLES

Description	Cat. No. White	Cat No. Red	Cat. No. Blue	Cat. No. Yellow
1 Foot	5LHOM-01W	5LHOM-01R	5LHOM-01L	5LHOM-01Y
2 Feet	5LHOM-02W	5LHOM-02R	5LHOM-02L	5LHOM-02Y
3 Feet	5LHOM-03W	5LHOM-03R	5LHOM-03L	5LHOM-03Y
4 Feet	5LHOM-04W	5LHOM-04R	5LHOM-04L	5LHOM-04Y
6 inch	5LHOM-6IW	5LHOM-6IR	5LHOM-6IL	5LHOM-6IY



5HHOM-01W

### HOME 5e ULTRA HIGH-FLEX PATCH CABLES

Description	Cat. No. White	Cat No. Red	Cat. No. Blue	Cat. No. Yellow
1 Foot	5HHOM-01W	5HHOM-01R	5HHOM-01L	5HHOM-01Y
2 Feet	5HHOM-02W	5HHOM-02R	5HHOM-02L	5HHOM-02Y
3 Feet	5HHOM-03W	5HHOM-03R	5HHOM-03L	5HHOM-03Y
4 Feet	5HHOM-04W	5HHOM-04R	5HHOM-04L	5HHOM-04Y
6 inch	5HHOM-6IW	5HHOM-6IR	5HHOM-6IL	5HHOM-6IY



6LHOM-01L

### HOME 6™ PATCH CABLES

Description	Cat. No. White	Cat No. Red	Cat. No. Blue	Cat. No. Yellow
1 Foot	6LHOM-01W	6LHOM-01R	6LHOM-01L	6LHOM-01Y
2 Feet	6LHOM-02W	6LHOM-02R	6LHOM-02L	6LHOM-02Y
3 Feet	6LHOM-03W	6LHOM-03R	6LHOM-03L	6LHOM-03Y
4 Feet	6LHOM-04W	6LHOM-04R	6LHOM-04L	6LHOM-04Y
6 inch	6LHOM-6IW	6LHOM-6IR	6LHOM-6IL	6LHOM-6IY



6HHOM-01W

### HOME 6 ULTRA HIGH-FLEX PATCH CABLES

Description	Cat. No. White	Cat No. Red	Cat. No. Blue	Cat. No. Yellow
1 Foot	6HHOM-01W	6HHOM-01R	6HHOM-01L	6HHOM-01Y
2 Feet	6HHOM-02W	6HHOM-02R	6HHOM-02L	6HHOM-02Y
3 Feet	6HHOM-03W	6HHOM-03R	6HHOM-03L	6HHOM-03Y
4 Feet	6HHOM-04W	6HHOM-04R	6HHOM-04L	6HHOM-04Y
6 inch	6HHOM-6IW	6HHOM-6IR	6HHOM-6IL	6HHOM-6IY



40812-RTK

**TOOLS**

Callout	Description	Cat. No.
A	Residential Tool Kit Includes: Punchdown Tool with 110 Blade, EZ-RJ45 Crimp Tool, 2 Level Coaxial Cable Strippers, UTP Stripping Tool, Coax and Round Wire Cable Cutter, EZ-RJ45 Connectors, Screwdriver	40812-RTK
B	Wire Punchdown/Termination Tool (Blades sold separately)	49553-814
C	Wire Punchdown/Termination Tool Blades	47603-110
D	UTP Stripping Tool	49660-00P
E	Coaxial Stripping Tool	C5914-000
F	EZ-RJ45™ Crimp Tool	40989-RCT

**ACCESSORIES**

Callout	Description	Cat. No.
A	EZRJ45 Connector (50 Per Pack) EZRJ45 Connector Display Pack (10 Per Pack)	47613-EZC 47613-EZR
B	Push-Lock Pins for Structured Media® Centers (20 Per Pack)	47615-NYL
C	4X4 Telephone Line Breakout Module	47609-4X4
D	Recloseable Tie-Wrap, 5" Length (25 Per pack)	43105-005
E	Recloseable Tie-Wrap, 8" Length (25 Per Pack)	43108-008
F	Recloseable Tie-Wrap, 12" Length (25 Per Pack)	43112-012

## Residential Grade

### In-Wall/In-Ceiling Speakers

Many of the same features from professional studio technologies are built-into selected models in the Leviton Architectural Edition™ powered by JBL® series. Whatever the application, when the specs call for JBL In-Wall and In-Ceiling Speakers, the performance is guaranteed to bring a new meaning to the phrase “home entertainment.”

#### Specifications and Features

- JBL Titanium-laminate drivers for maintaining musical accuracy and clarity even at frequency extremes
- Straight-line Signal Path™ (SSP™) crossover network for minimal signal distortion
- Elliptical Oblate Spheroidal™ (EOS™) Waveguides for improved high frequency dispersion throughout the listening area
- Titanium-laminate drivers for the ultimate in musical accuracy and clarity
- HeatScape™ magnetic structures for greater bass impact and realism
- Long-excursion woofers with butyl-rubber half-round surrounds and extended pole-piece magnetic structures for maximum bass impact and dynamic range
- Low-diffraction, swivel-tweeter mounting system for optimum stereo imaging
- Heavy-duty push-type input terminals for long-term connection integrity
- Integrated dog-ear mounting brackets (optional rough-in kits available for pre-construction installation in new homes)
- Acoustically-transparent paintable baffles and grilles



AEI65-000



AEI80-000

### LEVITON ARCHITECTURAL EDITION POWERED BY JBL IN-WALL SPEAKERS

	<b>AEI65 6.5" (170 mm) Two-Way In-Wall Loudspeaker</b>	<b>AEI80 8" (200 mm) Two-Way In-Wall Loudspeaker</b>
<b>Cat. No.</b>	<b>AEI65-000</b>	<b>AEI80-000</b>
Driver complement	1" (25 mm) Titanium-laminate dome tweeter; 6.5" (170 mm) Titanium-laminate woofer	1" (25 mm) Titanium-laminate dome tweeter; 8" (200 mm) Titanium-laminate woofer
Frequency Response (-10dB)	38 Hz-20 kHz	30 Hz-20 kHz
Sensitivity (2.83V/1m)	88 dB	89 dB
Power Handling	80 Watts	100 Watts
Impedance	Nominal 8 Ohms	Nominal 8 Ohms
Height	11" (279 mm)	13.12" (333 mm)
Width	8.5" (226 mm)	10.12" (257 mm)
Depth	3.87" (98 mm)	4" (102 mm)
Mounting Cutout size	7.13" x 9.69" (181.1mm x 246.1 mm)	8.88" x 11.81" (225.55 mm x 299.97 mm)
Weight	5 lb/2.3 kg per speaker Sold in pairs	7.8 lb/3.5 kg per speaker Sold in pairs

### LEVITON ARCHITECTURAL EDITION POWERED BY JBL® IN-CEILING SPEAKERS

	<b>AEC65 6.5" (170 mm) Two-Way In-Ceiling Loudspeaker</b>	<b>AEC80 8" (200 mm) Two-Way In-Ceiling Loudspeaker</b>	<b>AEM65 6.5" (170 mm) Two-Channel/Single Location Two-Way In-Ceiling Loudspeaker</b>
<b>Cat. No.</b>	<b>AEC65-000</b>	<b>AEC80-000</b>	<b>AEM65-000</b>
Driver complement	1" (25 mm) Titanium-laminate dome tweeter; 6.5" (170 mm) Titanium-laminate woofer	1" (25 mm) Titanium-laminate dome tweeter; 8" (200 mm) Titanium-laminate woofer	Dual .75" (19 mm) Titanium-laminate dome tweeters; One 6.5" (170 mm) Dual voice-coil Titanium-laminate woofer
Frequency Response (-10dB)	40 Hz-20 kHz	32 Hz-20 kHz	40 Hz-20 kHz
Sensitivity (2.83V/1m)	88 dB	89 dB	88 dB with both channels driven
Power Handling	80 Watts	100 Watts	100 Watts total (50 Watts/channel)
Impedance	Nominal 8 Ohms	Nominal 8 Ohms	Nominal 8 Ohms
Diameter	9.18" (233 mm)	10.87" (275 mm)	9.18" (233 mm)
Depth	4.25" (108 mm)	4.25" (108 mm)	4.25" (108 mm)
Mounting Cutout size	7.88" (200.15 mm) Diameter	9.50" (240mm) Diameter	7.88" (200.15 mm) Diameter
Weight	4.5 lb/2.0 kg per speaker Sold in pairs	5.6 lb/2.5 kg per speaker Sold in pairs	4 lb/1.8 kg per speaker Sold one each



AEC65-000



AEC80-000



AEM65-000

### Pre-construction Kits

Leviton/JBL pre-construction kits ensure that speaker locations and wiring are preserved and protected during construction, allowing for a cleaner, faster and more precise installation during the trim-out stage.

### PRE-CONSTRUCTION KITS FOR CEILING AND IN-WALL SPEAKERS

<b>Description</b>	<b>Cat. No.</b>
Leviton Architectural Edition powered by JBL In-Wall Center Shelf Pre-Construction kit (for use with AEI55)	AEPIS-KIT
Leviton Architectural Edition powered by JBL 6.5" Pre-Construction Speaker Kit for In-Wall Speaker	AEPI6-KIT
Leviton Architectural Edition powered by JBL 8" Pre-Construction Speaker Kit for In-Wall Speaker	AEPI8-KIT
Leviton Architectural Edition powered by JBL 6.5" Pre-Construction kit for In-Ceiling Speaker	PCC55-KIT
Leviton Architectural Edition powered by JBL 8" Pre-Construction Speaker kit for In-Ceiling Speaker	AEPC8-KIT
Fire-Rated Back Box for 6.5" Speakers	AEBC6-000



AEBC6-000

## Residential Grade

### Outdoor/All-Weather Speakers

Because outdoor music is more important than ever, the Leviton Architectural Edition™ powered by the JBL® line offers two outdoor/utility speaker solutions. Each is based on a professional counterpart and engineered to withstand long-term exposure to the elements while delivering full performance. Both bring a high-end listening experience to a deck, patio or poolside—wherever people expect to relax and entertain with comfort and style outside their home.

#### Specifications and Features

- Elliptical Oblate Spheroidal™ (EOS™) Waveguide technology for improved high-frequency dispersion
- Titanium-laminate (AEN24) or pure titanium (AES36) tweeter for maintaining musical accuracy and clarity even at frequency extremes
- WeatherPlas™ (polymer-coated cellulose fiber cone) woofers with rubber surround, high-temperature/oversized Kapton® voice coils, and HeatScape™ motor structures
- Straight-line Signal Path™ (SSP™) crossover networks for minimal signal distortion
- 5-way binding post input terminals for long-term connection integrity
- Mounting brackets (AEN24) and/or special mounting hardware (AES36) included
- Sold in pairs

### LEVITON ARCHITECTURAL EDITION POWERED BY JBL OUTDOOR SPEAKERS



AEN24-000



AES36-000

	<b>AEN24 Outdoor/All-Weather Two-Way Loudspeaker</b>	<b>AES36 Outdoor/All-Weather Three-Way Loudspeaker</b>
<b>Cat. No.</b>	<b>AEN24-000</b>	<b>AES36-000</b>
Driver complement	.75" (19 mm) Titanium-laminate dome tweeter, 4" (100 mm) WeatherPlas (polymer-coated cellulose fiber cone) woofer with rubber surround, high-temperature/oversized Kapton voice coil, and HeatScape motor structure	1" (25 mm) Pure Titanium shielded dome tweeter, 4" (100 mm) WeatherPlas shielded midrange with Linear Field Proximity (LFP) bezel, 6" (150 mm) WeatherPlas (polymer-coated cellulose fiber cone) shielded woofer with rubber surround, high-temperature/oversized Kapton voice coil, Symmetrical Field Geometry (SFG™) magnet design and cast aluminum basket
Frequency Response (-3dB):	75 Hz-20 kHz	60 Hz-20 kHz
Sensitivity (2.83V/1m)	86 dB	90 dB
Power Handling	100 Watts	150 Watts
Impedance	Nominal 8 Ohms	Nominal 8 Ohms
Height	9.5" (241 mm)	10.25" (260 mm)
Width	6.25" (159 mm)	14.62" (371 mm)
Depth	4.75" (121 mm)	5" (127 mm)
Weight	4.5 lb/2.1 kg per speaker	11 lb/5 kg per speaker
	Sold in pairs	Sold in pairs

JBL and Harman/Kardon are registered trademarks of Harman International Industries, Incorporated. All other trademarks are the property of their respective owners.

## Spec-Grade™ Speakers

### Specifications and Features

- Kevlar® composite woofer provides the perfect linear movement needed to reproduce dynamic, tight bass and incisive midrange frequencies
- AeroNylon tweeter diaphragm for very low mass and high tensile strength to provide crystal-clear treble response and exceptionally accurate tracking of even the most challenging musical transients
- Built-in AutoSurge™ circuit protection helps prevent speaker damage
- Advanced phase/time alignment guide properly aligns sound without mis-aligning the tweeters
- Precision dividing network ensures total audio signal electronic integrity up to the last microsecond before the signal is converted into sound
- Inert mounting frame with “dogleg” installation points eliminates any transmitted vibrations that could color in-wall or ceiling sound quality



SGC65-00W



SGI65-00W



SGI80-00W



SGO99-00W

### LEVITON SPEC-GRADE SOUND INDOOR AND OUTDOOR SPEAKERS

	<b>6.5" Two-Way In-Ceiling Loudspeaker</b>	<b>6.5" Two-Way In-Wall Loudspeaker</b>	<b>8" Two-Way In-Wall Loudspeaker</b>	<b>Outdoor/Utility Two-Way Loudspeaker</b>
<b>Cat. No.</b>	<b>SGC65-00W</b>	<b>SGI65-00W</b>	<b>SGI80-00W</b>	<b>SGO99-00W</b>
<b>Color</b>	White (-W)	White (-W)	White (-W)	White (-W)
<b>Driver complement</b>	6.5" Kevlar composite cone low-frequency transducer, 1" AeroNylon high-frequency transducer, 2-way precision high-order crossover network with AutoSurge circuit balanced geometry protection	6.5" Kevlar composite cone low-frequency transducer, 1" AeroNylon dome high-frequency transducer with phase/time alignment guide, 2-way precision high-order crossover network with AutoSurge circuit protection	8" Kevlar composite cone low-frequency transducer, 5" AeroNylon dome high-frequency transducer with phase/time alignment guide, 2-way precision high-order crossover network with AutoSurge circuit protection	5.25" Silicate-fiber cone low-frequency transducer with butyl rubber surround, 5" Polydome high-frequency transducer, 2-way balanced precision crossover network with AutoSurge circuit protection, element-resistant polypropylene enclosure, gold-plated binding terminals, and aluminum mounting bracket (with stainless-steel hardware)

Continued On Next Page >

## Residential Grade

Continued From Previous Page >

	<b>6.5" Two-Way In-Ceiling Loudspeaker</b>	<b>6.5" Two-Way In-Wall Loudspeaker</b>	<b>8" Two-Way In-Wall Loudspeaker</b>	<b>Outdoor/Utility Two-Way Loudspeaker</b>
<b>Cat. No.</b>	<b>SGC65-00W</b>	<b>SGI65-00W</b>	<b>SGI80-00W</b>	<b>SGO99-00W</b>
Frequency Response	50-20kHz +/- 3dB	50-20kHz +/- 3dB	44-20kHz +/- 3dB	50-20kHz +/- 3dB
Sensitivity	87.0 dB SPL @ 1 Watt/1 Meter	88.0 dB SPL @ 1 Watt/1 Meter	86.5 dB SPL @ 1 Watt/1 Meter	87 dB SPL @ 1 Watt/1 Meter
Power Handling	120W peak/60W RMS	120W peak/60W RMS	160W peak/80W RMS	120W peak/60W RMS
Impedance	Nominal 8 Ohms/ Minimum 6 Ohms	Nominal 8 Ohms/ Minimum 6 Ohms	8 Ohms/ Minimum 6 Ohms	Nominal 8 Ohms/ Minimum 6 Ohms
Diameter	9.02" (229.2 mm)	-	-	-
Height	-	12.30" (312.4 mm)	14.20" (360.7 mm)	8.5" (215.9 mm)
Width	-	9.00" (228.6 mm)	10.25" (260.4 mm)	6.79" (172.4 mm)
Depth	3.25" (82.5 mm to rear of baffle)	3.20" (81.2 mm D to rear of baffle)	3.52" (89.4 mm D to rear of baffle)	6.03" (153.2 mm) D (without bracket)

## PRE-CONSTRUCTION KITS FOR LEVITON SPEC-GRADE SPEAKERS

<b>Description</b>	<b>Cat. No.</b>
Rough-In Bracket for 6.5" In-Wall Loudspeaker	PCI65-KIT
Rough-In Bracket for 8" In-Wall Loudspeaker	PCI80-KIT
Leviton Architectural Edition powered by JBL® 6.5" Preconstruction kit for In-Ceiling Speaker	PCC55-KIT

## REPLACEMENT GRILLS FOR LEVITON SPEC-GRADE IN-CEILING AND IN-WALL SPEAKERS

<b>Description</b>	<b>Cat. No.</b>
SGC65 Speaker Replacement Grill	SCG65-GRL
SGI65 Speaker Replacement Grill	SGI65-GRL
SGI80 Speaker Replacement Grill	SGI80-GRL

### Home Theater Component Speakers

JBL® Systems measure up to a higher standard than typical home theaters, because more JBL speakers are found in film recording studios and behind the screens of the world's best movie theaters than any other brand. In the Leviton/JBL program, the same professional features and technologies that set JBL apart from the rest are ready for installation into advanced home theater systems—including leading-edge driver materials for clarity and definition, advanced crossover networks for signal purity, and “overbuilt” magnetic structures for maximum output and long-term reliability. Even the acoustically-transparent grilles concealing this speaker technology are inspired by JBL's years of professional experience in behind-the-screen theater sound systems.

Whether installed in a living room, family room, den or other entertainment space, Leviton Architectural Edition™ powered by JBL home theater speaker systems will thrill listeners with a theater quality listening experience.

#### Specifications and Features

##### JBL In-Wall/In-Ceiling Speakers

- JBL Titanium-laminate drivers (AEI65/80 in-wall and AEC65/80 and AEM65 in-ceiling models) or pure Titanium tweeter and Polymer-coated aluminum woofers (AEI55 installed center channel model) for maintaining musical accuracy and clarity even at frequency extremes
- Straight-line Signal Path™ (SSP™) crossover network for minimal signal distortion
- Long-excursion woofers with butyl-rubber half-round surrounds and extended pole-piece magnetic structures for maximum bass impact and dynamic range
- Low-diffraction, swivel-tweeter mounting system for optimum stereo imaging
- Heavy-duty push-type input terminals for long-term connection integrity
- Integrated dog-ear mounted brackets (optional rough-in kits available for pre construction installation in new homes)
- Acoustically-transparent paintable baffles and grilles

##### JBL Shelf-Mount Center Channel Speaker

- Straight-line Signal Path (SSP) crossover network for minimal signal distortion
- Dual 5-inch JBL PolyPlas™ cone woofers
- FreeFlow™ flared port for increased bass response without adding unwanted port noise
- Elliptical Oblate Spheroidal™ (EOS™) waveguide technology for improved high-frequency dispersion
- Acoustically-transparent silver grille included

##### JBL Subwoofer

- High efficiency, high current switching amplifier
- JBL's PolyPlas woofer for low frequencies
- FreeFlow flared port for increased bass response without adding unwanted port noise
- Variable low-pass crossover frequency controls and a phase switch allow for adjusting the AESUB to be adjusted to a room's particular acoustics and an individual's personal preference
- LFE and line level inputs for maximum connection flexibility
- Acoustically-transparent silver grille included

Straight-line Signal Path™, PolyPlas™, FreeFlow™ and Elliptical Oblate Spheroidal™ are trademarks of Harman International Industries, Incorporated.

## Residential Grade

### LEVITON ARCHITECTURAL EDITION™ POWERED BY JBL® HOME THEATER SHELF-MOUNT SPEAKER

#### AECCS Dual 5" Two-way Shelf-Mount Center Channel Loudspeaker



AECCS-VCE

Cat. No.	AECCS-VCE
Driver complement	.75" (19 mm) Titanium-laminate dome shielded Tweeter; Two 5" (130 mm) PolyPlas™ shielded woofers
Frequency Response (-3dB)	75 Hz-20 kHz
Sensitivity (2.83V/1m)	90 dB
Power Handling	75W/300W
Impedance	Nominal 8 Ω
Height	6.5" (165 mm)
Width	20.25" (514 mm)
Depth	9.625" (244 mm)
Weight	9.6 lb/4.4 kg per speaker Sold one each

### LEVITON ARCHITECTURAL EDITION™ POWERED BY JBL® HOME THEATER SUBWOOFER

#### AESUB Powered 12" Subwoofer with 300-Watt Amplifier



AESUB-012

Cat. No.	AESUB-012
Driver complement	12" (300 mm) PolyPlas™ woofer
Enclosure type	Front-firing
Amplifier power output (RMS)	300 Watts
Dynamic power (peak)	500 Watts
Subwoofer Frequency Response (+/- 3dB)	25 Hz- low-pass crossover setting (variable)
Inputs	Line-Level (switchable to LFE) and Speaker-Level, with five-way binding posts
Height	19.75" (502 mm)
Width	14.37" (365 mm)
Depth	18" (457 mm)
Weight	39.5 lb/18 kg per speaker Sold one each

**LEVITON ARCHITECTURAL EDITION™ POWERED BY  
JBL® HOME THEATER IN-WALL SPEAKERS**

**AEI55 Dual 5" Two-Way  
In-Wall (LCR) Channel  
Home Theater  
Loudspeaker**



AEI55-000

<b>Cat. No.</b>	<b>AEI55-000</b>
Driver complement	1" (25 mm) Pure Titanium dome tweeter; Two 5" (125mm) Polymer-coated aluminum woofers
Frequency Response (-10dB)	40 Hz-20 kHz
Sensitivity (2.83V/1m)	88 dB
Power Handling	120 Watts
Impedance	Nominal 8 Ohms
Height	7.5" (191 mm)
Width	15.37" (391 mm)
Depth	3.87" (98mm)
Mounting Cutout size	14" x 6" (356 mm x 152 mm)
Weight	5.7 lb/2.6 kg per speaker Sold one each

## Residential Grade

### Home Cinema Speaker System

#### Specifications and Features

##### Home Cinema Speakers

- Five-channel system expands to 6.1 and 7.1 Surround-Sound operation with the addition of optional AESS5 satellite speaker(s)
- Includes five 2-way magnetically-shielded satellite speakers with high-output 2.5" (63.5 mm) woofer and precision .5" (12.7 mm) tweeter; one 8" (200 mm) 100-Watt powered subwoofer with LFE input, adjustable level control, and built-in crossover network for use with speaker-level receiver outputs
- Includes five architectural-grade adjustable mounting brackets
- Includes subwoofer input RCA cable
- Available in white or black finish

##### Satellite Speaker

- Includes one 2-way magnetically-shielded satellite speaker with high-output 2.5" (63.5 mm) woofer and precision .5" (12.7 mm) tweeter
- Includes one architectural-grade adjustable mounting bracket

##### Adapter Wallplate/Rough-In Kit

- Includes mounting hardware (wallplate screws and thread cutting screws for bracket to wallplate mounting)
- Available in black or white finish



AEH50-0WH

#### HOME CINEMA SPEAKER SYSTEM

##### AEH50 5-Channel Surround-Sound Home Cinema Speaker System with 100 Watt Powered Subwoofer and 5 Satellite Speakers

Cat. No.	AEH50-0WH	AEH50-0BL
Colors	White	Black
Subwoofer Enclosure Type	Bass-reflex with FreeFlow™ flared port	Bass-reflex with FreeFlow™ flared port
Recommended power range	10-100 Watts	10-100 Watts
Subwoofer Frequency Response (+/- 3dB)	35 Hz-160 Hz	35 Hz-160 Hz
Subwoofer Crossover Frequency	120 Hz, 24 dB/octave with LFE/Normal switch in NORMAL position	120 Hz, 24 dB/octave with LFE/Normal switch in NORMAL position
Satellite Frequency Response (+/-3dB)	150 Hz-20kHz	150 Hz-20kHz
Satellite Speaker Sensitivity (2.83V/1m)	86 dB	86 dB
Satellite Impedance	Nominal 8 Ohms	Nominal 8 Ohms
Subwoofer Dimensions and Weight		
Height	16.25" (413 mm)	16.25" (413 mm)
Width	11" (279 mm)	11" (279 mm)
Depth	13.75" (349 mm)	13.75" (349 mm)
Weight	28 lb/12.7 kg	28 lb/12.7 kg
Satellite Dimensions and Weight	1.8 lb/0.8 kg per speaker	1.8 lb/0.8 kg per speaker

**EXPANSION SATELLITE SPEAKER**

Optional AEH50 System matched Satellite Speaker for 6- and 7-channel operation for 6.1 or 7.1 Surround-Sound operation



AESS5-OWH

Cat No.	AESS5-OWH	AESS5-OBL
Colors	White	Black
Recommended power range	10- 100 Watts	10- 100 Watts
Frequency Response (+/- 3dB)	150 Hz- 20kHz	150 Hz- 20kHz
Speaker Sensitivity (2.83V/1m)	86 dB	86 dB
Impedance	Nominal 8 Ohms	Nominal 8 Ohms
Height	5" (127 mm)	5" (127 mm)
Width	3.5" (88 mm)	3.5" (88 mm)
Depth	3.5" (88 mm)	3.5" (88 mm)
Weight	1.8 lb/0.8 kg per speaker	1.8 lb/0.8 kg per speaker

**ADAPTER WALLPLATE/ROUGH-IN KIT FOR JBL® HOME CINEMA SPEAKER SYSTEM SATELLITE SPEAKERS**

Single gang Decorative Satellite Speaker Adapter Wallplate

Cat. No.	AEPHK-OWH	AEPHK-OBL
Colors	White	Black
Height	4.5" (114 mm)	4.5" (114 mm)
Width	2.75" (70 mm)	2.75" (70 mm)
Depth	25" (6 mm)	25" (6 mm)
Weight	1 oz./0.3 kg	1 oz./0.3 kg

NOTE: Patents Pending.

## Residential Grade

### Harman/Kardon® Audio/Video Entertainment Center Components

There is no better way to assure the highest performance and value from a state-of-the-art Leviton Architectural Edition™ powered by JBL® system than to match it with the Harmon/Kardon Entertainment Center.

#### Specifications and Features

##### Harman/Kardon A/V Receiver

- Selectable Surround Sound modes, including but not limited to: Logic 7®, DTS®, DTS® 96/24™, Dolby® Digital, Dolby Virtual Speaker Version 2, and Dolby Pro Logic® II & IIx
- High Current amplification/Ultra-Wide Bandwidth design with independent front and rear power supplies
- 1080 HDMI™ switching with Audio/Video processing
- Simplay HD™ verified
- EzSet/EQ automatic room/system correction equalization (calibrated microphone included)
- Automatic room/system correction equalization (calibrated microphone included)
- Converts composite and S-video sources to component video
- RS-232 port for future applications
- Programmable backlit remote control
- iPod® Bridge compatible

##### Harman/Kardon DVD Player

- Attractive case for shelf-top locations.
- Red talkback LED, tests system for correct wiring as well as indicating infrared reception
- Nominal reception angle: 45 degrees off axis
- Attached 7' cable and 3.5 mm stereo mini plug permits direct plug-in to Connecting Block that has an "IR RCVR" or "AUX" jack

##### Remote Sensor

- Attractive case for shelf-top locations
- Red talkback LED, tests system for correct wiring as well as indicating infrared reception
- Nominal reception angle: 45 degrees off axis
- Attached 7' cable and 3.5 mm stereo mini plug permits direct plug-in to Connecting Block that has an "IR RCVR" or "AUX" jack



HKAVR-XXX\*

### HARMAN/KARDON 7.1 CHANNEL DIGITAL AUDIO/VIDEO RECEIVER

Description	Cat. No.
Seven-Channel Audio/Video Surround-Sound Receiver, with HDMI™ switching	HKAVR-xxx*

\*See [www.leviton.com](http://www.leviton.com) to confirm Leviton part number. Check with your Leviton salesperson for product availability.

Dolby, Dolby Pro-Logic are registered trademarks of Dolby Laboratories.  
 DTS is a registered trademark of Digital Theater Systems, Inc.  
 HDCD is a registered trademark of Pacific Microsonics, Inc.  
 Burr-Brown is a trademark of Texas Instruments Incorporated.  
 Bridge, JBL and Harman/Kardon are registered trademarks of Harman International Industries, Incorporated.  
 iPod is a registered trademark of Apple Computer, Inc.  
 Windows Media is a registered trademark of Microsoft Corporation.  
 All other trademarks are the property of their respective owners.

**HARMON/KARDON® DVD PLAYER WITH HDMI OUTPUT AND 1080I UPSCALING**

Cat. No.	HKDVD
Height	2" (50 mm)
Width	17.3" (440 mm)
Depth	11.25" (285 mm)
Weight	6 lbs (2.7 kg)



HKDVD

**INFRARED REMOTE SENSOR**

Cat. No.	HKRMS
IR modulation frequency bandwidth	30-100 kHz
Nominal reception range	> 30 feet
Power	12 volts DC @ 10 milliamps. 781RG Power Supply required (supplied)
Maximum cable length	One mile with 18 gauge
Maximum current output	100 milliamps
Connecting block	3.5 mm stereo mini jack for quick-connect IR receivers; two 3.5 mm mono mini jacks with 470-Ohm resistors drive 2 single or 2 dual emitters; and, 2.1 mm coaxial power jack
Height	1" (26 mm)
Width	3.25" (83 mm)
Depth	2" (51 mm)
Weight	5.4 oz (0.153 kg)



HKRMS

## Residential Grade

### Harman/Kardon® and A-BUS® Multi-Room Amplified Audio System (Hub and Volume Controls)

As an expansion option, Harman/Kardon offers the ability to connect with an A-BUS hub and amplified volume controls. This makes it possible to add multi-room music distribution right off the back of a compatible receiver. Each equipped room has a volume control with its own built-in amplifier suitable for casual or background indoor listening. Up to four rooms/zones can be operated from a single hub, which passes remote IR commands back from the volume controls and into the receiver so the user can access remote control functions from any A-BUS equipped room. The 4-zone A-BUS hub connects quickly and easily to the compatible interface port on the back of the advanced HKAVR receiver.

#### Specifications and Features

##### A-BUS Volume Control

- Decora® up/down amplified rocker-style volume control powers dedicated speakers in a single room/zone
- Built-in IR sensor accepts control commands to A/V receiver or other compatible components
- Fits in standard J-box or low-voltage mounting ring
- Output level trim pots
- Uses Category 5/5e UTP cabling

##### A-BUS Expansion Hub

- Distributes A-BUS audio signal and power to up to four rooms/zones with HKABV Volume Controls and connected speakers
- Easily connects to the RJ-45 A-BUS interface on the rear of an A-BUS Ready® HKAVR A/V Receiver



HKABV

#### AMPLIFIED IN-WALL A-BUS VOLUME CONTROL

Cat. No.	HKABV
----------	-------

#### A-BUS LOCAL SOURCE INPUT

Cat. No.	HKABS-000
----------	-----------

Cat. No.	HKABS-CBL	RCA Cable for Local Source Input
----------	-----------	----------------------------------



HKABS

#### A-BUS 4-ZONE SYSTEM EXPANSION HUB

Cat. No.	HKABH
----------	-------

Decora® is a registered trademark of Leviton Manufacturing Inc. Bridge, JBL and Harman/Kardon are registered trademarks of Harman International Industries, Incorporated. A-BUS and A-BUS Ready are registered trademarks of LeisureTech. Electronics Pty Ltd. Australia. All other trademarks are the property of their respective owners.



HKABH

### Leviton Architectural Edition™ Multi-Room Amplifiers

Leviton's Architectural Edition Multi-Room Audio Amplifiers combine advanced audio engineering, high-current performance and tremendous value in a single low-profile chassis. Superior multi-channel amplification supports even the most demanding residential multi-zone systems.

Designed for long-term use with advanced circuit protection and a thermostatically-controlled cooling fan, the AE6MA is a perfect balance of performance and simplicity. The AE6MC is the ultimate in listening flexibility, as advanced LCD keypads enable the selection of up to seven different audio sources in any room with full independent control—perfect for homes with a wide range of listening styles and preferences.

#### Specifications and Features

##### Leviton Architectural Edition Multiroom Amplifiers

- Automatic protection circuitry
- High efficiency/small space - Each of the twelve power amplifiers, inside the 3.5" high enclosure, delivers 50 Watts nominal (40 Watts RMS) with peaks of 100 Watts
- Individual input gain adjustment - Adjusts each channel for input and speaker sensitivity variations
- External power ON/OFF through external controllers (12VDC trigger output)
- Electronic Link feature - Allows for either six different stereo channel inputs to have individual sources, or for a different channel input's pair to share a common source depending on which link button is selected with a particular source (single-source amplifier model only; multi-room version has independent source selection and control)
- Cooling fan - A thermostatically-controlled internal fan helps prevent overheating, maximizes energy efficiency and ensures long-term reliability

##### AE6MC Multi-room Amplifier Additional Features

- Seven source input selection - Each of the six stereo amplifiers (12 channels total) has access to up to seven independent audio sources
- Six internal 80+ position stereo volume controls
- All-zone control through use of AE6MC keypad - Allows access to the entire system from a single keypad, as an entertainment feature. Keypad can be controlled remotely with an AE6MC remote (sold separately)

### LEVITON ARCHITECTURAL EDITION MULTI-ROOM AMPLIFIERS

	<b>12 Channel (6 Stereo Pairs) Power Amplifier</b>	<b>Seven-Source, Six-Room Multi- Channel Controller Amplifier</b>
<b>Cat. No.</b>	<b>AE6MA-000</b>	<b>AE6MC-000</b>
Output Power	50 Watts nominal; (40 Watts RMS per channel 20Hz to 20kHz @ <0.2% THD, all channels driven into 8 Ohms)	50 Watts nominal; (40 Watts RMS per channel 20Hz to 20kHz @ <0.2% THD, all channels driven into 8 Ohms)
Peak Output Power	100 Watts per channel	100 Watts per channel
Inputs	Gold-plated RCA jacks with adjustable input gain	14 gold-plated RCA jacks with adjustable input gain. Each input has a fully buffered RCA jack output



AE6MA-000

Continued On Next Page >

## Residential Grade

Continued From Previous Page >



AE6MC

	<b>12 Channel (6 Stereo Pairs) Power Amplifier</b>	<b>Seven-Source, Six-Room Multi- Channel Controller Amplifier</b>
<b>Cat. No.</b>	<b>AE6MA-000</b>	<b>AE6MC-000</b>
Outputs	5-way gold-plated binding posts	Removable screw terminal type accepts 12-20 gauge wire
Total Harmonic Distortion (THD)	Less than 0.1% 20 Hz to 20 kHz	Less than 0.1% 20 Hz to 20 kHz
Signal-to-noise ratio	Over 105 dBA weighted (50 Watts)	Over 105 dBA weighted (50 Watts)
Fan noise	Quiet 28 dBA	Quiet 28 dBA
Height	3.5" (89 mm)	3.5" (89 mm)
Width	17" (432 mm)	17" (432 mm)
Depth	11.5" (292 mm)	11.5" (292 mm)
Weight	22 lb/ 10 kg	22 lb/ 10 kg

### AE6MC MULTI-ROOM AMPLIFIER KEYPAD ACCESSORIES

<b>Description</b>	<b>Cat. No.</b>
Keypad Controller for AE6MC Amplifier	AE6MC-PAD
Remote Control for AE6MC Keypad Operation	AE6MC-RMT

## Composer Series Volume Controls

Leviton's Composer Series Volume Controls are built to a single quality standard, which means system designers can specify them for any distributed sound application with total confidence. Leviton's Strauss Volume Control and Chopin Digital Volume Controls use the same heat dissipation technology used on the space shuttle. Their transformer-free design with audiophile-grade Cermetile resistors achieves ruler-flat frequency response across the entire audible frequency range while also eliminating the problem of "saturation" associated with conventional volume control and enabling them to handle tremendous amounts of music power.

### Specifications and Features

#### Strauss Volume Control

- Decora® slide control with precision 12-position switch (including full OFF position)
- Transformer-Free attenuation technology ensures linear frequency response, signal integrity and high power handling ability
- Cermetile resistors replace conventional autoformers to preserve audio signal purity
- Detachable cable connector is compatible with all standard speaker wire sizes (14-18 gauge)
- Decora designer styling adds an elegant touch to any décor
- Can be used outdoors when mounted with any compatible Decora all weather cover

#### Chopin Volume Control

- No direct speaker/amplifier connections required at the volume control wall unit
- Digital, transformer-free design uses aerospace-grade Cermetile resistors for proper heat dissipation and superior performance
- Selectable boot-up feature allows automated volume level control upon powering of the stereo system
- Microprocessor controlled relays for silent switching
- Tap mute feature activated when pressing center of rocker switch
- 3-way volume control can be configured using extra controls

### DECORA® STRAUSS TRANSFORMER-FREE VOLUME CONTROLS

	Decora Strauss Transformer-Free Volume Control	Decora Strauss Transformer-Free Impedance Matching Volume Control
<b>Cat. No.</b>	<b>SGVST-00W</b>	<b>SGVSM-00W</b>
Color	White (W)	White (W)
Frequency Response	20Hz-20kHz +/- 1dB	20Hz-20kHz +/- 1dB
Power Handling	200W peak/100W RMS	200W peak/100W RMS
Speaker Impedance	4-16 Ohms (nominal 8 Ohms)	4-16 Ohms (nominal 8 Ohms)
Mounting	Standard single-gang design (mounting Depth 2.5"/64 mm)	Standard single-gang design (mounting Depth 2.5"/64 mm)
Materials	Frame and slider: White Polycarbonate; high impact, fire retardant plastic rated UL94 V-0	Frame and slider: White Polycarbonate; high impact, fire retardant plastic rated UL94 V-0



SGVSM-00W  
(Wallplate Not Included)

### COLOR CHANGE KITS

Description	Cat. No.
Color change kit (converts to Ivory or Almond)	SGVCK-0IA
Color change kit (converts to Black)	SGVCK-00E
Color change kit (converts to Light Almond)	SGVCK-0LA



### DECORA CHOPIN DIGITAL STEREO VOLUME CONTROL

	Digital Volume Control Wall Unit	Digital Volume Control Kit
<b>Cat. No.</b>	<b>48211-WVC</b>	<b>48211-WVK</b>
Color	White (W)	White (W)
Peak RMS Power Rating	200 Watts per channel	
Continuous Power Rating	100 Watts RMS per channel	
Frequency Response	(+/- 1dB) -15 - 50kHz	
Speaker Impedance	4-16 Ohms nominal	
Speaker/Amp Ctn.	Removable, snap-in audio monoblock with screw terminals	
Power Requirements	12 Volts DC, 200mA	
Height	4.13" (104.9 mm)	3.3" (83.82 mm)
Width	1.5" (38.1 mm)	6.5" (165.1 mm)
Depth	1.2" (30.48 mm)	1.8" (45.72 mm)

48211-WVC



48211-WVK

## Residential Grade

### Audio Distribution Modules

For system connectivity, the Leviton Architectural Edition™ line offers advanced and innovative audio distribution and control modules that centralize audio distribution connections and make for quicker, more reliable connections.

#### Specifications and Features

##### System Matching Module

- Combine with non impedance-matching Decora® Volume Controls to control up to six speaker pairs (cannot be used with impedance-matching volume controls)
- Mounts in Leviton's Structured Media® Centers
- Connects six rooms/zones
- AutoSurge™ circuit technology protects speakers from potentially damaging transients
- Transformer-Free™ impedance-matching design ensures linear frequency response, signal integrity, and high power handling capacity
- Aerospace-grade Cermetile resistors replace conventional autoformers to maintain audio signal purity
- Independent channel grounds assure safe connection for all conventional audio amplifiers
- Detachable cable connectors are compatible with all standard speaker wire sizes (14-18 gauge)

NOTE: to avoid amplifier damage, do not use the System Matching Module with impedance-matching volume controls

##### 1x6 Audio Distribution Module

- Combine with impedance-matching Decora Volume Controls to control up to six speaker pairs from an amplifier or receiver
- Mounts in Leviton's Structured Media Centers
- Connects six rooms/zones
- Parallel connection scheme ensures the best sound quality
- User-removable connectors facilitate installation
- Connects with standard speaker wire
- Meets or exceeds applicable standards: UL and cULus listed

NOTE: to avoid amplifier damage, do not use the Audio Distribution Module with non-impedance matching volume controls



SGAMP

#### SYSTEM MATCHING MODULE FOR IMPEDANCE-MATCHING PASSIVE TWO-CHANNEL MULTI-ROOM AUDIO SYSTEMS

System Matching Module	
<b>Cat. No.</b>	<b>SGAMP-000</b>
Power Handling	150W RMS per channel/225W peak
Frequency Response	(+/- .5dB) 10Hz-40kHz
Dimensions	2.57" H x 6.38" W x 5.38" D (68.6 mm H x 161.9 mm W x 136.5 mm D)



48211-06A

#### 1X6 AUDIO DISTRIBUTION MODULE

<b>Cat. No.</b>	<b>48211-06A</b>
Dimensions	6.58" H x 2.89" W x 1.42" D (167.1 mm H x 73.4 mm W x 36.1 mm D)
Wire Gauge	14-18 AWG
Requirements	Product must be used with impedance-matched volume controls or controllers

### Leviton Architectural Edition™ Home Theater and Multi-Room Integrated Wallplates

These integrated wallplates combine the build-quality and signal path purity of a custom “audiophile” plate with the connectivity speed and convenience of a ready-made spring-clip design. Both home theater and multi-room audio versions are expandable using Leviton’s acclaimed QuickPort® snap-in modules. These plates are complete and ready-to-use, and make a “custom quality” statement in any installed entertainment system.

#### Specifications and Features

##### Home Theater and Multi-Room Wallplates

- Designed for easy installation of cables
- Wallplates feature two QuickPort openings for adding other connectors (QuickPort blanks installed)
- Includes painted screws to match wallplates
- For use with low voltage rings and standard low voltage junction boxes

##### AEHTK Additional Features

- Accommodates from 5.1 to 7.1 channel surround-sound systems which connect to the A/V Receiver
- Features RCA connectors for connecting subwoofers
- Two extra openings for additional QuickPort connectors (ex. adding an A-BUS® jack or IR port)

##### AEMRK Additional Features

- Integrated wallplate for connecting Left and Right Audio Speakers (+/- connections), and two extra openings for additional QuickPort connectors (ex. adding a subwoofer or A-BUS jack)

##### Speaker Wallplates Features

- Allows for simple, solderless connections to any home entertainment speaker system
- Designed to be used with in-wall speaker wiring schemes

### HOME THEATER AND MULTI-ROOM WALLPLATES

	AEHTK Home Theater Interface Wallplate	AEMRK Multi-Room Install Wallplate
<b>Cat No.</b>	<b>AEHTK-000</b>	<b>AEMRK-000</b>
Connector Type (front of module)	14 audiophile-grade, gold-plated black and red spring clips; 2 RCA connectors; 2 QuickPort openings	4 audiophile-grade, gold-plated black and red spring clips; 2 QuickPort openings
Connector Type (back of module)	Eight-pin and six-pin in-line pluggable screw terminals	2 two-pin in-line pluggable screw terminals
Wallplate	High quality impact-resistant plastic	High quality impact-resistant plastic
Color	White	White
Design	Standard three-gang	Standard single-gang
Mounting Depth	2.5" (64 mm)	2.5" (64 mm)
Wiring	14-16 gauge speaker wire	14-16 gauge speaker wire



AEHTK



AEMRK



40952-2PW

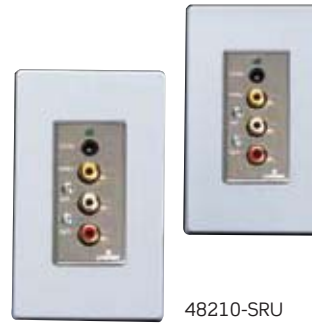
### LEVITON ARCHITECTURAL EDITION AUDIO SPEAKER WALLPLATES

Description	Cat. No.	Cat. No.
	White (W)	Ivory (I)
1-Gang Single Spring Clip Device Audio/Video Wallplate, Standard Size, Polymer Break Resistant, Box Mount	40951-1PW	40951-1PI
1-Gang Double Spring Clip Device Audio/Video Wallplate, Standard Size, Polymer Break Resistant, Box Mount	40952-2PW	40952-2PI

## Residential Grade



48210-MCH



48210-SRU

### DECORA® MEDIA SYSTEMS COMPONENTS

	Send Unit With Power Supply	Receive Unit	Media Hub With Power Supply
<b>Cat. No.</b>	<b>48210-MSU</b>	<b>48210-MRU</b>	<b>48210-MCH</b>
Video Bandwidth	50 MHz @ -3 dB	50 MHz @ -3 dB	50 MHz @ -3 dB
Video THD	75 dBc	-75 dBc	-75 dBc
Video Input	0.5V to 2V composite	—	0.5V to 2V composite
Video Output	—	0.5V to 2V composite	—
Slew Rate	800/Vus	800/Vus	800/Vus
Audio Input Impedance	20k Ohms, max 3Vp-p	20k Ohms, max 3Vp-p	—
Audio Output Impedance	—	51 Ohms, max 2Vp-p	—
Audio Freq. Response	5 Hz-100k Hz, ±3 dB	5 Hz-100k Hz, ±3 dB	5 Hz-100k Hz, ±3 dB
Audio THD	0.002% 20 Hz-20k Hz	0.004% 20 Hz-20k Hz	0.002% 20 Hz-20k Hz
Audio S/N Ratio	100 dB typical, 80 dB min, 20 Hz-20k Hz	100 dB typical, 80 dB min, 20 Hz-20k Hz	100 dB typical, 80 dB min, 20 Hz-20k Hz
Input Noise	4.5nV/(Hz), 1/2 typical @ 1k Hz	6nV/(Hz), 1/2 typical @ 1k Hz	4.5nV/(Hz), 1/2 typical @ 1k Hz
Input and Outputs	3 RCA input jacks, 1 set RJ-45 in/out jacks 1 110 punchdown out, 1 DC power input	3 RCA output jacks, 1 set RJ-45 in/out jacks 1 110 punchdown out, 1 DC power input	3 RCA input jacks, 1 RJ-45 input jack 6 RJ-45 output jacks, 1 DC power input
Power	12VDC	12VDC	15VDC
Height	4.1" (104.1 mm)	4.1" (104.1 mm)	6.5" (165.1 mm)
Width	1.4" (35.6 mm)	1.4" (35.6 mm)	3.4" (86.4)
Depth	2.0" (50.8 mm)	2.0" (50.8 mm)	1.75" (4.44 mm)

### DECORA MEDIA SYSTEMS UNIT PAIR

Description	Cat. No.
Decora Media System Send and Receive Unit Pair with Power Supply	48210-SRU

### MULTI-ROOM INFRARED (IR) REPEATER SYSTEM

Description	Cat. No.
Infrared Emitter	47621-MIE
Infrared Target	47621-CMS
1x9 Bridged Telephone Module, without bracket. Individual boxed unit pack, rack pack carton.	47603-110
Target Output	1 signal lead
Target Input	2 power leads (DC + and -)
Emitter Output	Infrared to control source component
Emitter Input	2 signal leads
Power Supply	12VDC @ 500mA
Emitter Length	6 ft (1.8 m) of Cable
Dimensions	2" H x 1" W (50.8 mm H x 25.4 mm W)

### Recessed Devices

For an almost invisible installation behind wall-mounted TVs, entertainment centers, monitors and more, connect with Leviton Recessed Devices. The Recessed Entertainment Box (REB) centralizes AC power and low voltage connection points for audio, video, data and phones. For smaller applications, choose a 2-Gang Recessed Duplex Receptacle (with openings for six installer-selected QuickPort® connectors) or a 1-Gang Recessed Duplex Receptacle.

Flush-mounted on the wall, the Leviton recessed boxes install invisibly behind wall units, wall-mounted flat panel TVs, and signature artwork. They are perfect for homes, apartments, co-ops, condominiums and offices.

#### Specifications and Features

##### Recessed One-Gang Duplex Receptacle

- 1-gang recessed receptacle
- Offers a cULus approved, code compliant solution providing two 15A/125VAC NEMA 5-15R power outlets
- Supplies AC power for two components (flat panel TVs and video receiver)
- Fits most common electrical boxes available at Electrical Distributors and Home Centers (electrical box not included)

##### Recessed Two-Gang Duplex Receptacle with Openings for Six QuickPort Connectors

- Offers a UL approved, code compliant solution providing two 15A/125VAC NEMA 5-15R power outlets and openings for six installer-selected QuickPort connectors or blank inserts (four inserts included)
- Fully compatible with Leviton's QuickPort Snap-In Modules
- Includes plastic electrical box designed for use in new and retrofit construction
- Centralizes device connection points for AC power, audio, video, data and phone connections
- Wallplate built into device

##### Recessed Entertainment Box

- Manages home theater electronics in a single location
- Ideal for new construction (stud-mounted) and retrofit (wall-mounted) applications
- Low-profile frame provides neat, clean recessed installation
- Optional high-profile cover includes sliding plastic front panel, and channels all wires through the bottom of the REB
- Any combination of line and low voltage products can be configured in the three device openings
- Paintable white ABS molded plastic for structural integrity

Continued On Next Page >

## Residential Grade

Continued From Previous Page >

### LEVITON RECESSED DEVICES



689-00W



690-00W



47617-REB

Description	Cat. No. White (-W)	Cat. No. Ivory (-I)	Cat. No. Lt. Almond (-T)	Cat. No. Black (-E)	Cat. No. Non-Magnetic Stainless Steel
1-Gang Recessed Single Receptacle 15A-125VAC, 2-Pole, 3-Wire - NEMA 5-15R (Includes Clock Hanger Hook)	688-00W	688-00I	—	—	5261-0CH
1-Gang Recessed Duplex Receptacle 15A-125VAC, 2-Pole, 3-Wire - NEMA 5-15R	689-00W	689-00I	689-00T	689-00E	—
1-Gang Recessed Single Receptacle 20A-125VAC, 2-Pole, 3-Wire - NEMA 5-20R (Includes Clock Hanger Hook)	—	—	—	—	5361-0CH
2-Gang Recessed Duplex Receptacle and Openings for 6 QuickPort Modules 15A-125VAC, 2-Pole, 3-Wire - NEMA 5-15R	690-00W	690-00I	690-00T	690-00E	—

### RECESSED ENTERTAINMENT BOX (REB)

Description	Cat. No.
REB Box Includes Low-Profile Frame	47617-REB
High-Profile Cover	47617-HPC
Low Profile Frame	47617-LPF
Replacement Snap-In Plates (2 Per Bag)	47617-PLT
REB Box Includes High Profile Cover	47617-RBH