



Sixnet Automation Series

INDUSTRIAL RTU & I/O DEVICES



www.redlion.net/sixnet

Sixnet Automation Series

Sixnet rugged RTUs and I/O provide a simple yet powerful means to reliably monitor and control remote sites around the clock in the harshest environments. Our compact automation systems can start small and grow as needs increase without requiring hardware replacement. "Best of both worlds" programming combines Windows ease of use with the future-proof security of an embedded Linux OS.

rugged
reliable

devices



www.redlion.net/sixnet

Industrial RTUs

VersaTRAK & SixTRAK



- **Rugged environmental ratings**
 - UL, CSA, CE, ABS Marine and Zone 2 rated
 - Supports temperatures ranging from -40 to 70° C
- **Intelligent data logging and control in one device**
 - Combine PLC, data logger, industrial computer and communications gateway functionality
 - Based on non-proprietary industry standards and open Linux operating system
- **Works with a variety of process quality I/O modules**
 - I/O expansion
 - Peer-to-peer I/O transfer capability
- **Many communication ports**
 - Open protocols enable advanced communication
 - Modbus TCP/UDP/ASCII/RTU, IEC60870-5-101/104, DNP3, SNMP, Sixnet UDR
- **Programmable control flexibility**
 - C language
 - ISaGRAF

| PART NUMBER | PORTS | | | ON-BOARD I/O | | | | MEMORY | | |
|----------------|-------|-----|-----|--------------|----|----|----|--------|-------|------|
| | ETH | 232 | 485 | DI | DO | AI | AO | NVRAM | FLASH | DRAM |
| ST-IPM-6350 | 5 | 2 | 1 | — | — | — | — | 2M | 128M | 64M |
| VT-MIPM-245-D | 1 | 2 | 2 | 12 | 4 | 8 | 2 | 512K | 64M | 32M |
| VT-MIPM-135-D | 1 | 2 | 1 | 12 | 8 | 6 | — | 512K | 64M | 32M |
| VT-IPM2M-113-D | 1 | 1 | 1 | 12 | 4 | 8 | — | 512K | 32M | 32M |
| VT-IPM2M-213-D | 1 | 1 | 1 | 12 | 4 | 8 | 2 | 512K | 32M | 32M |
| VT-UIPM-431-H | 1 | 2 | 1 | 8 | 4 | 2 | — | 512K | 16M | 16M |

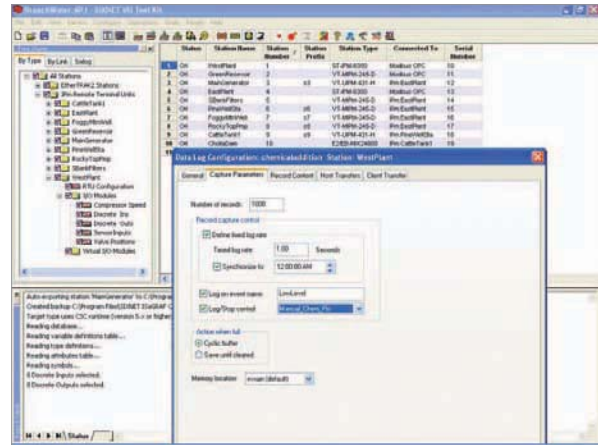
“Sixnet has over a 20-year track record of making hardware and software that answer requirements for industrial data logging and controls.”

“Sixnet’s roots are in automation, and the company has been right there as the industry has moved toward Ethernet.”

— Network World

Programming & Configuration Software

Sixnet I/O Toolkit & ISaGRAF Open

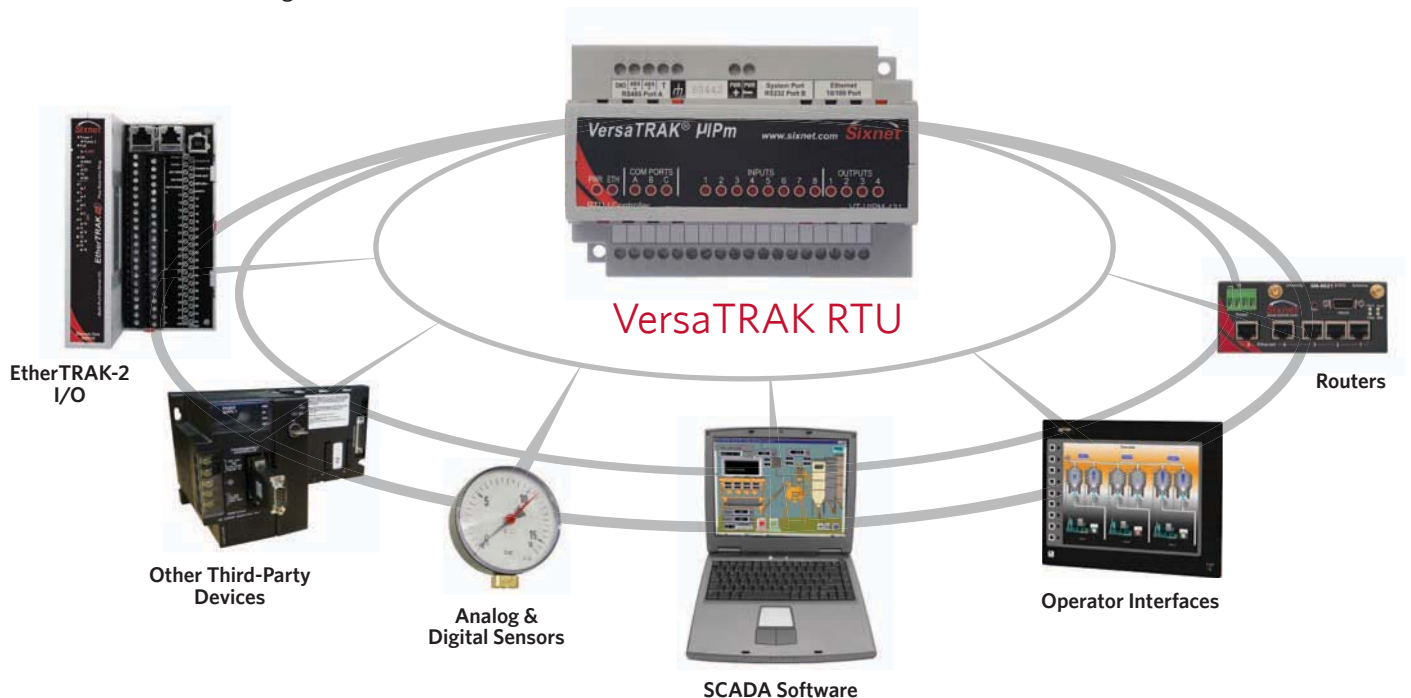


- **Configure, program and maintain with familiar Windows interfaces**

- Easy-to-use GUI provides system-wide view
- Configuration wizards support data logging and alarming
- Open programming software supports IEC61131-3 languages:
 - Sequential Function Chart
 - Ladder Diagram
 - Structured Text
 - Instruction List
 - Function Block Diagram
 - Flow Chart

- **Linux operating platform**

- Transparent to users
- Flexible, open architecture
- Integrated Application Development Kit (IADK)
- Web server capabilities



CONNECT. MONITOR. CONTROL.

I/O Modules

EtherTRAK-2



- **Rugged environmental ratings**

- UL, CSA, CE, ABS Marine and Zone 2 rated
- Supports temperatures ranging from -40 to 75° C

- **High-resolution I/O with a space saving design**

- Up to 34 I/O channels
- Web browser-based configuration/testing
- Up to 1 mS I/O polling for fast updates

- **Industry standard protocols offer unparalleled reliability**

- RS-485 port for polling Modbus devices
- Support for Sixnet real-time ring
- Peer-to-peer transfers

- **Networking adaptability**

- Two Ethernet ports provide three communication modes: ring, pass-thru and two network

- **Hardware Features**

- Redundant power ensures availability
- Self-resetting fuses prevent short circuits
- Hot swap capabilities reduce downtime

| PART NUMBER* | DI | DO | AI | AO | DESCRIPTION |
|-----------------------|----|----|-------|----|---|
| E2- OR EB- MIX24880-D | 24 | 8 | 8 | 0 | Combination I/O with one isolated input counter** |
| E2- OR EB- MIX24882-D | 24 | 8 | 8 | 2 | Combination I/O with two analog outputs** |
| E2- OR EB- 32DI24-D | 32 | — | — | — | 32 inputs (10-30 VDC) including 16 multifunction counters |
| E2- OR EB- 16DI24-D | 16 | — | — | — | 16 individually isolated 10-30 VAC/VDC with counters |
| E2- 16DIAC-D | 16 | — | — | — | 16 individually isolated 120 VAC (nominal) inputs |
| E2- OR EB- 32DO24-D | — | 32 | — | — | High density discrete outputs (0.5 Amp each, 8 Amp total) |
| E2- OR EB- 16DO24-D | — | 16 | — | — | Individually isolated 1 Amp outputs with self-resetting fuses |
| E2- OR EB- 32AI20M-D | — | — | 32 | — | High density 16 bit 4-20 mA inputs with self-resetting fuses |
| E2- OR EB- 32AI10V-D | — | — | 32 | — | Voltage inputs (other ranges available as special order) |
| E2- OR EB- 16AI20M-D | — | — | 16 | — | 16 channels 4-20 mA inputs with self-resetting fuses |
| E2- OR EB- 8AO20M-D | — | — | — | 8 | 4-20 mA analog outputs |
| E2- OR EB- 16AI-8AO-D | — | — | 16 | 8 | 16 4-20 mA analog inputs and 8 4-20 outputs |
| E2- OR EB- 10RTD-D | — | — | 10RTD | — | RTD (100 Ohm platinum), -200 to 850°C plus |
| E2- OR EB-16ISOTC-D | — | — | 16TC | — | Instrumentation thermocouples |
| E2- OR EB-16ISO20M-D | — | — | 16 | — | Isolated 4-20mA inputs |
| E2- OR EB-16DORLY-D | — | 16 | — | — | Individually isolated discrete outputs (10-30 VDC/VAC relay) 1 Amp output each, 16 Amps total |

*EB part number prefix is for modules that include the optional PoE feature. Standard product part numbers begin with E2

**24 maximum DIs are listed, 8 of which can be configured as either DI or DO. The discrete outputs are protected by self-resetting fuses.

www.redlion.net/sixnet

CONNECT. MONITOR. CONTROL.

About

As the global experts in communication, monitoring and control for industrial automation, Red Lion has been delivering innovative solutions to customers for forty years. Our award-winning technology enables companies worldwide to gain real-time data visibility that drives productivity. Product brands include Red Lion, Sixnet and N-Tron. With headquarters in York, Pennsylvania, the company has offices across the Americas, Asia-Pacific and Europe. Red Lion is a Spectris company.

Visit www.redlion.net/sixnet, email info@redlion.net or call +1 (518) 877-5173 to learn more.

